

Glycolytic and Lipid Oxidative Metabolic Programs Are Essential for Freshly-Isolated Regulatory T Cell in Sepsis Mice

*Xiaomei Zhu, WenQing Ji, Shubin Guo, *, Di Zhu, Yue Yang, Xin Liu*

Beijing Key Laboratory of Cardiopulmonary-Cerebral Resuscitation, Emergency
Department, Chao-Yang Hospital, Capital Medical University, Chaoyang District,
Beijing 100020, China

** To whom correspondence should be addressed.*

Email: shubinguo@126.com

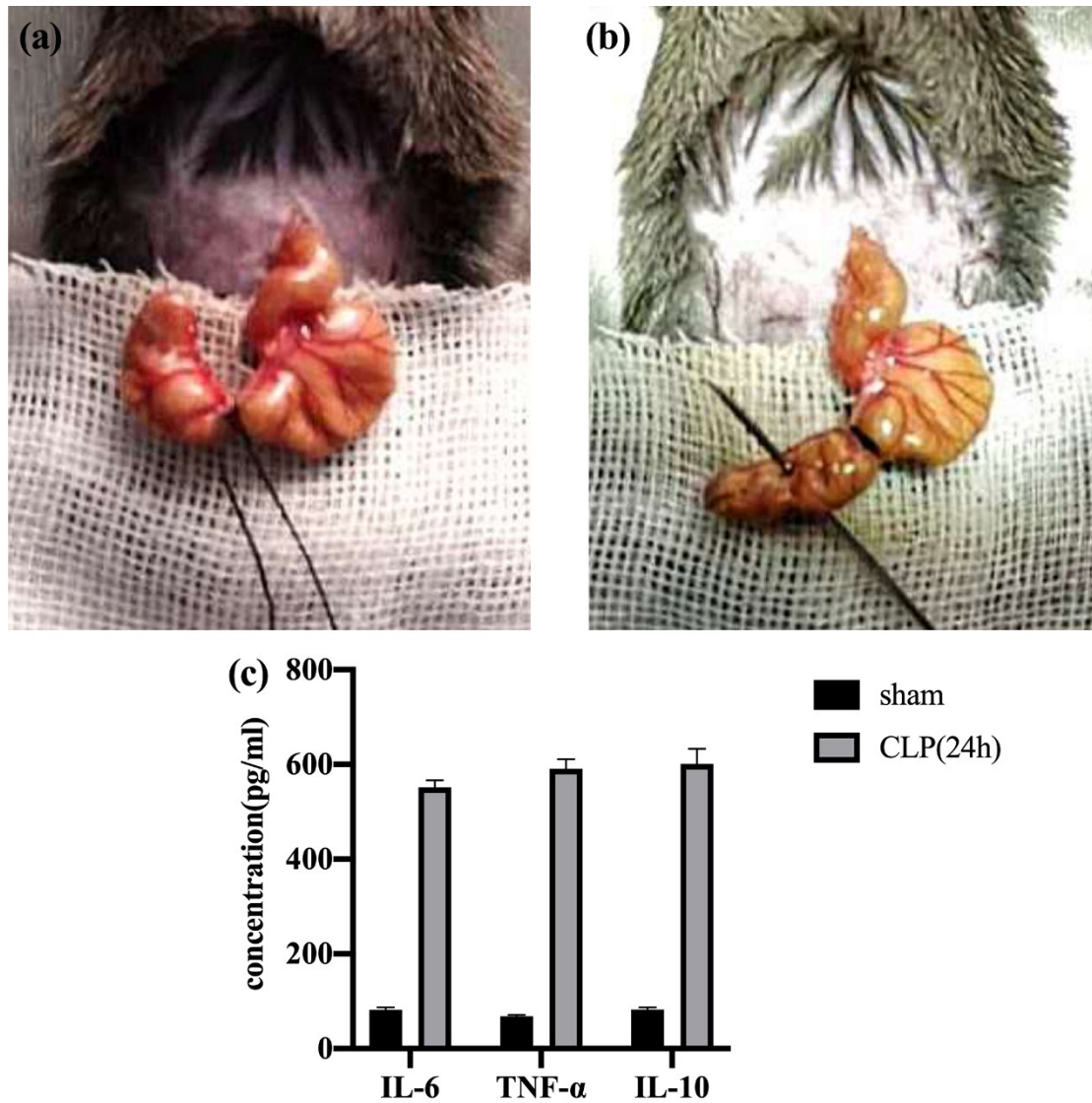


Fig. S1 (a) Ligation of the cecum at moderate position. (b) Cecal puncture ('through-and-through') using No. 4 needle. (c) Comparison of pro-inflammatory and anti-inflammatory factors between the two groups.

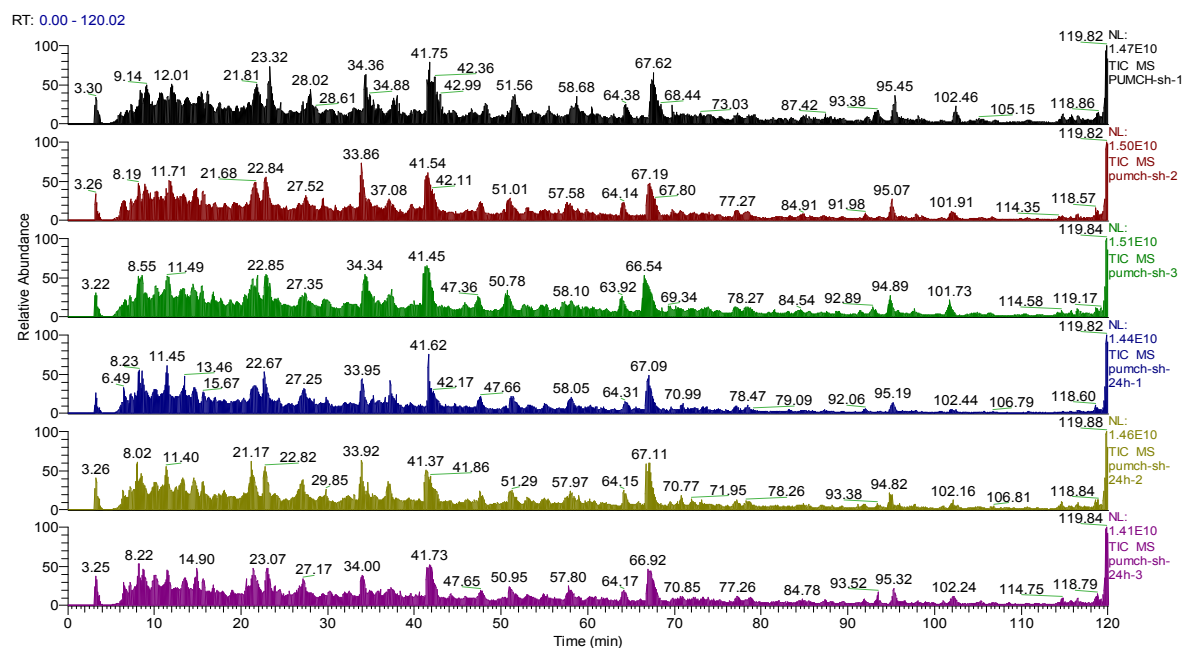


Fig. S2 The total ion chromatogram (TIC)

Three parallel samples were set in CLP group and sham group respectively. This figure shows the TIC of these 6 samples. We can see that the consistency of these 6 samples is very high, indicating that the mass spectrometry quantitative results are relatively accurate.