

Fig. S1 The schematic of the grafting process.

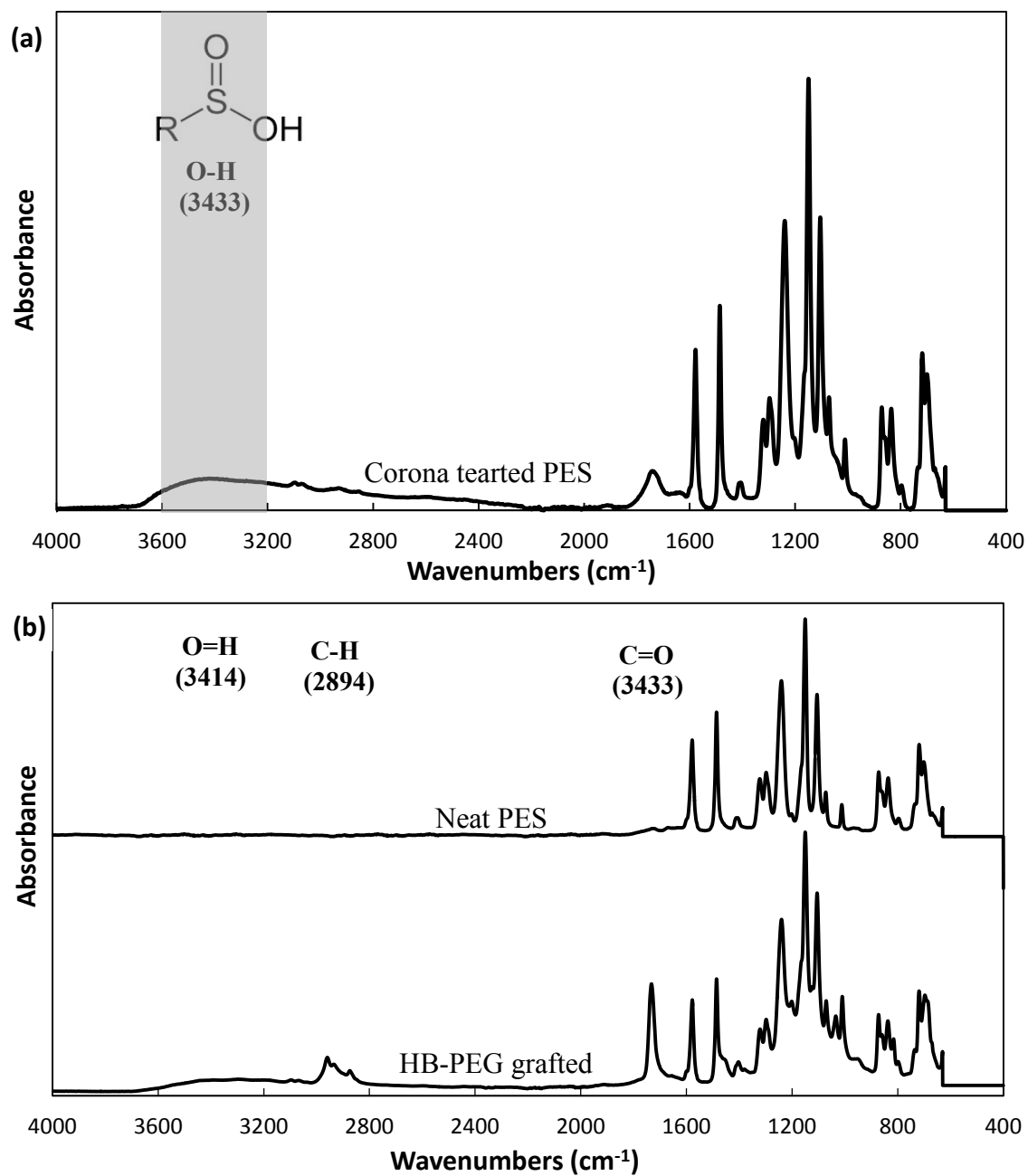
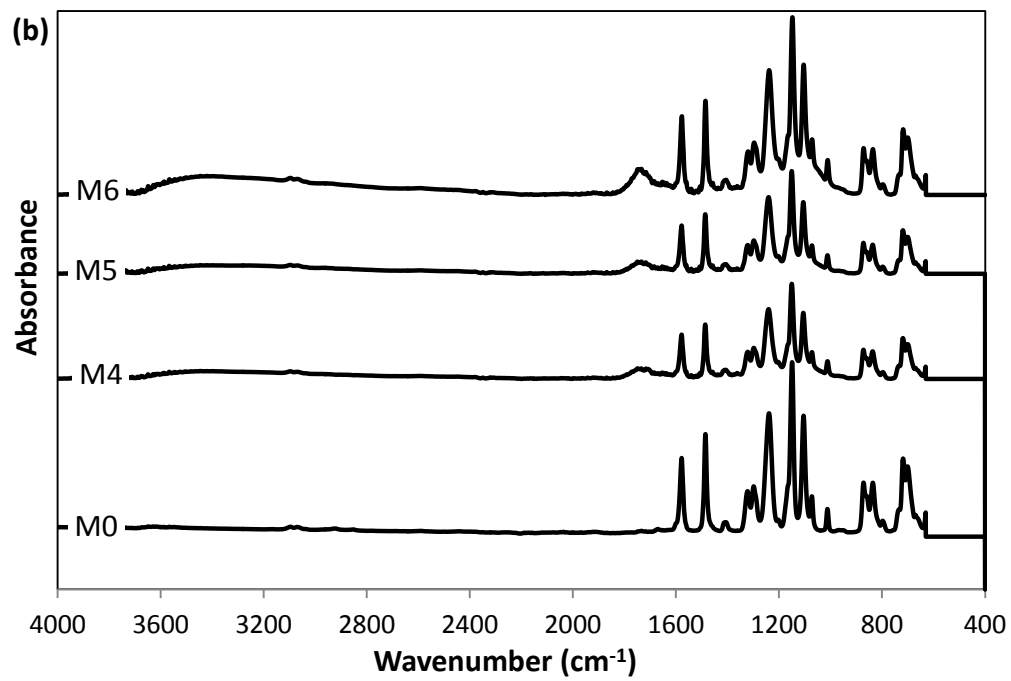
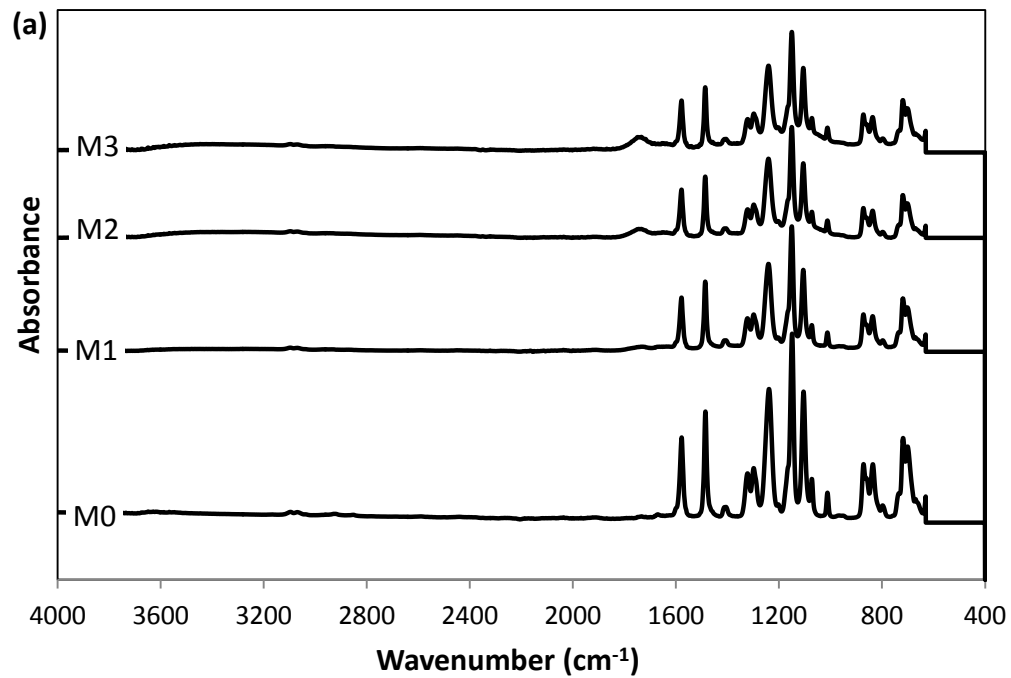


Fig. S2 The FTIR spectra of the corona treated PES membrane (a), neat PES membrane (b) and HB-PEG grafted PES membrane (c).



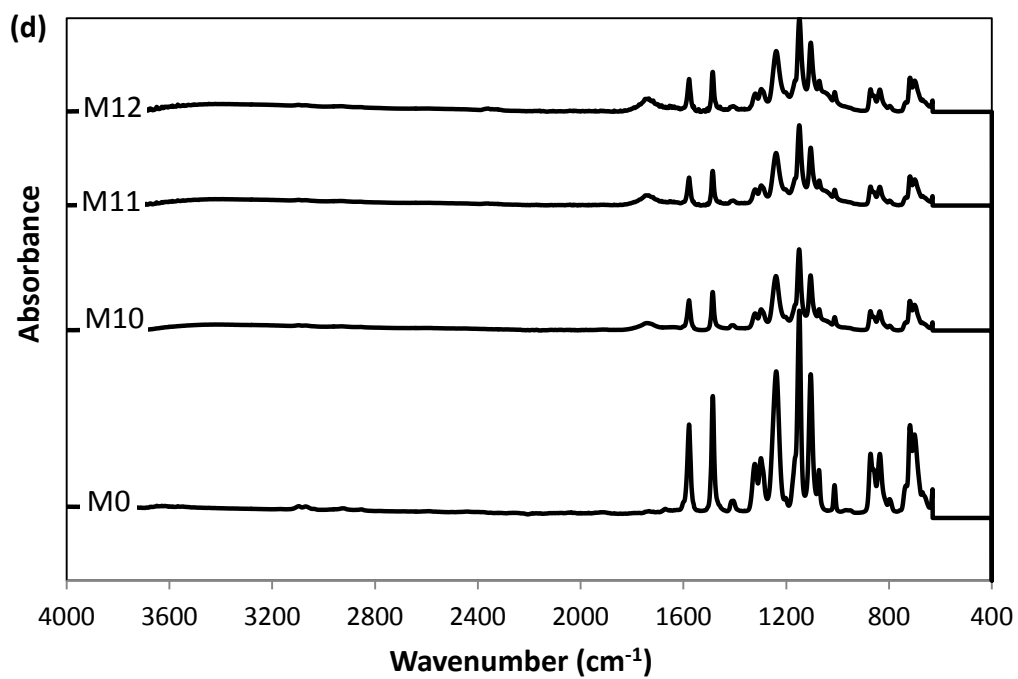
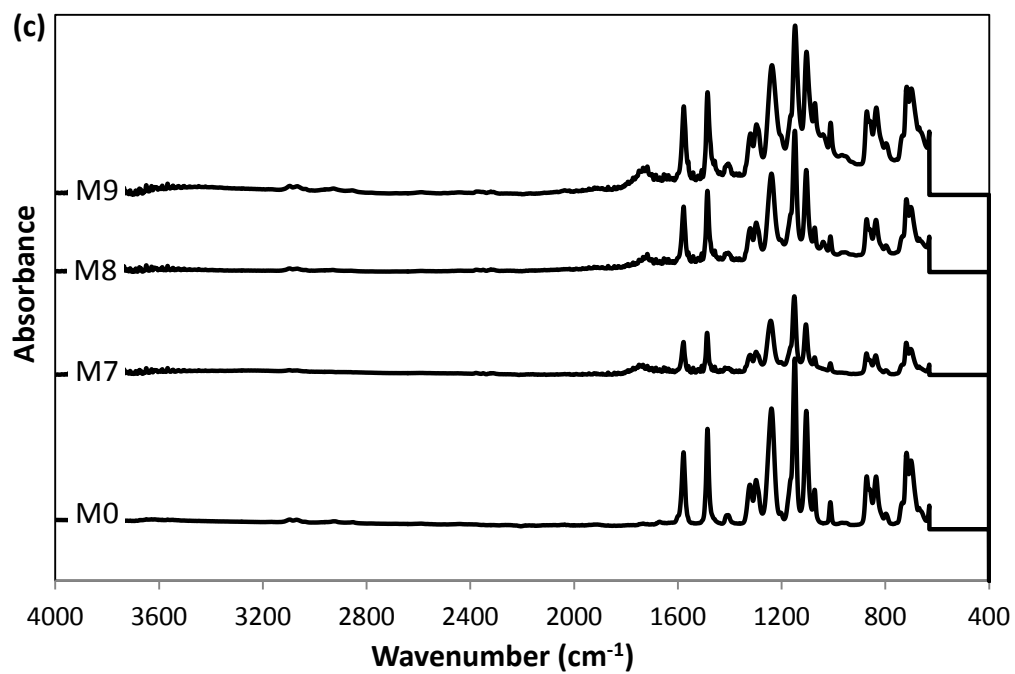


Fig. S3 The FTIR spectra of the HB-PEG grafted PES membranes treated at corona input power of 180W (a), 270W (b), 360W (c) and 450W (d).

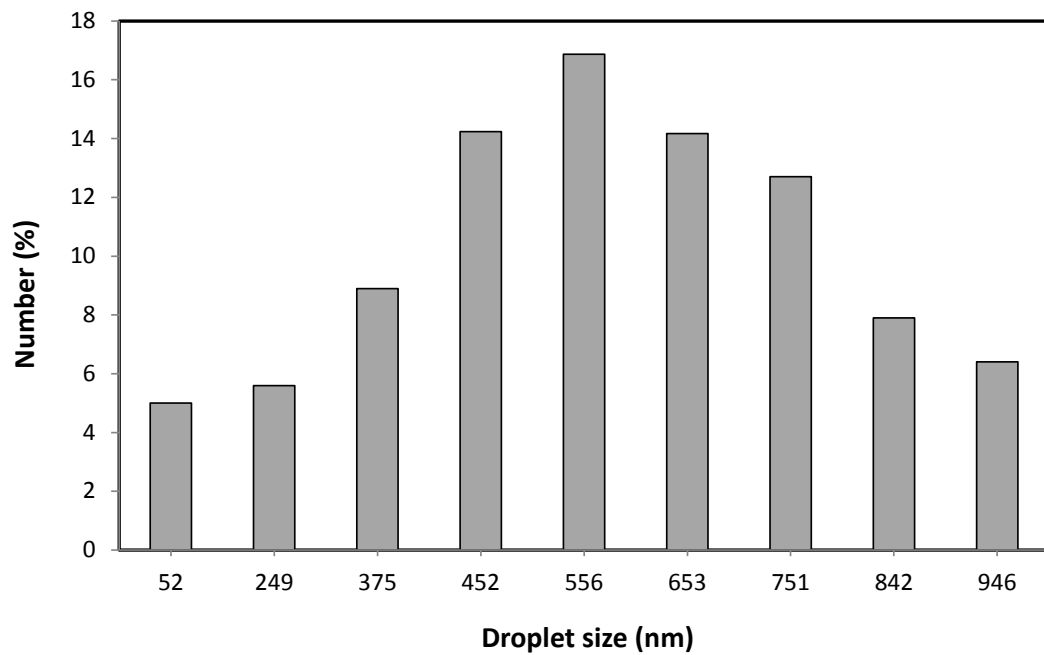


Fig. S4 The size distribution of the oil droplets in the feed stream.