

Supplementary material

**Effects of mPEG-DSPE/corannulene or perylene nanoparticles on the
ovary and oocyte**

Hongyu Wang ^{a, c, *}, Jingwen Zhang ^{a, *}, Daofu Feng ^{b, †} and Xizeng Feng ^{a, †}

^a College of Life Science, The Key Laboratory of Bioactive Materials, Ministry of Education, State Key Laboratory of Medicinal Chemical Biology, Nankai University, Tianjin 300071, China.

^b Department of General Surgery, Tianjin Medical University General Hospital, No.154 Anshan Road, Tianjin 300052, China.

^c Current work address: Institute of Tropical Bioscience and Biotechnology, Chinese Academy of Tropical Agricultural Sciences, Haikou 571101, China.

* These authors contributed equally to this work.

† Corresponding author. Email addresses: xzfeng@nankai.edu.cn (X. Z. Feng)

jerryfenglc@sina.com (D. F. Feng)

Table S1 List of qRT-PCR primers.

Gene	Forward primer	Reverse primer
<i>atg14</i>	TCATATTCCCAATCGACGAAG	CATCACAGACCCATCTTCCA
<i>bax</i>	ATGCGTCCACCAAGAAGC	CCAGTTGAAGTTGCCATCAG
<i>beclin</i>	GCTCAGTACCAGCGGGAGTAT	CAAGCGACCCAGTCTGAAAT
<i>cat</i>	GTGTTGAACGAGGAGGAGAG	CTGCGTGTAGGTGTGAATTG
<i>caspase-3</i>	AAAGGCTGGAACCCTTGTTT	GCACCTTGCCTTCAATGAGT
<i>gpx</i>	TTGAGAAAGGAGATGTGAACGG	CAAAGTTCCAGCGGATGTCA
<i>lc3</i>	CATGAGCGAGTTGGTCAAGA	TTGACTCAGAAGCCGAAGGT
<i>sod2</i>	AACAATCTCAACGCCACCG	AGTCACGCTTGATAGCCTCCA
<i>gapdh</i>	GGTTGTCTCCTGCGACTTCA	TAGGGCCTCTCTTGCTCAGT

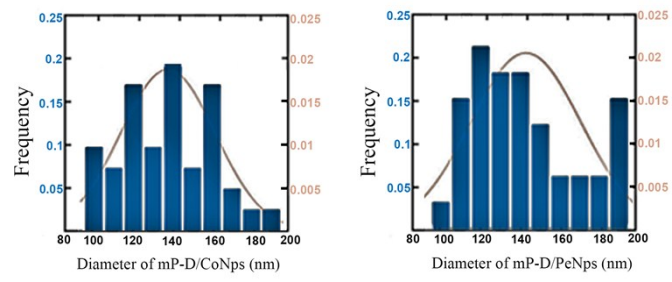


Fig.S1 Frequency distribution map of nanoparticles of different sizes.

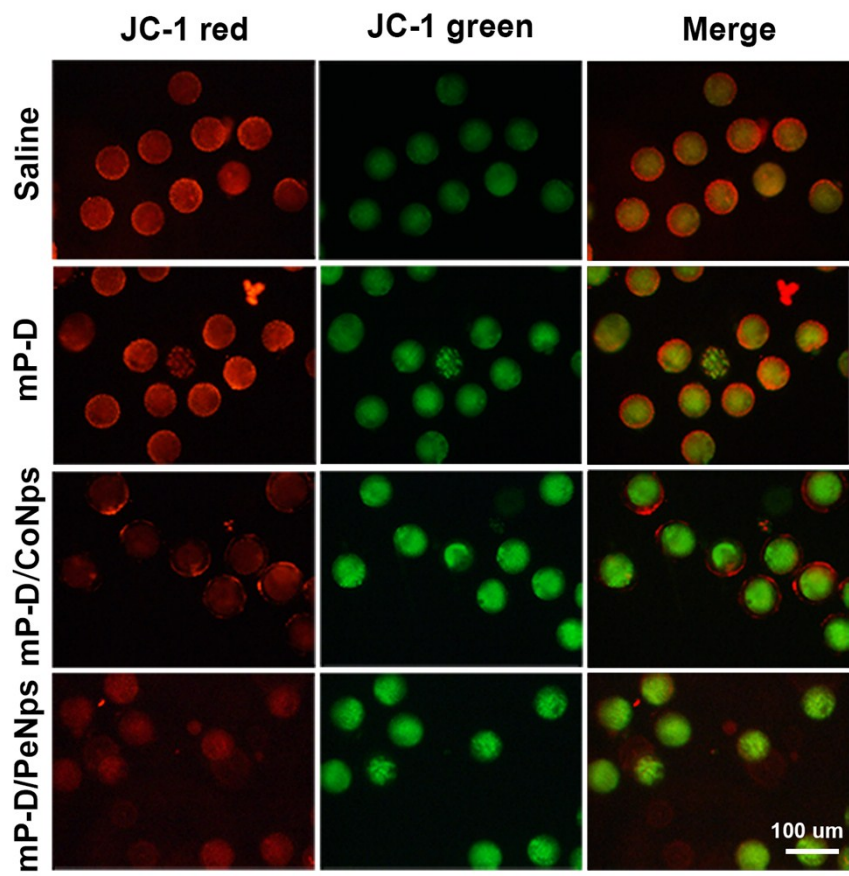


Fig. S2 mP-D/CoNps or PeNps treatment have effect on the mitochondria function. The fluorescence photographs of mitochondrial membrane potential detected by JC-1 in saline, mP-D, mP-D/CoNps and mP-D/PeNps groups. Scale bar indicates 100 μ m.