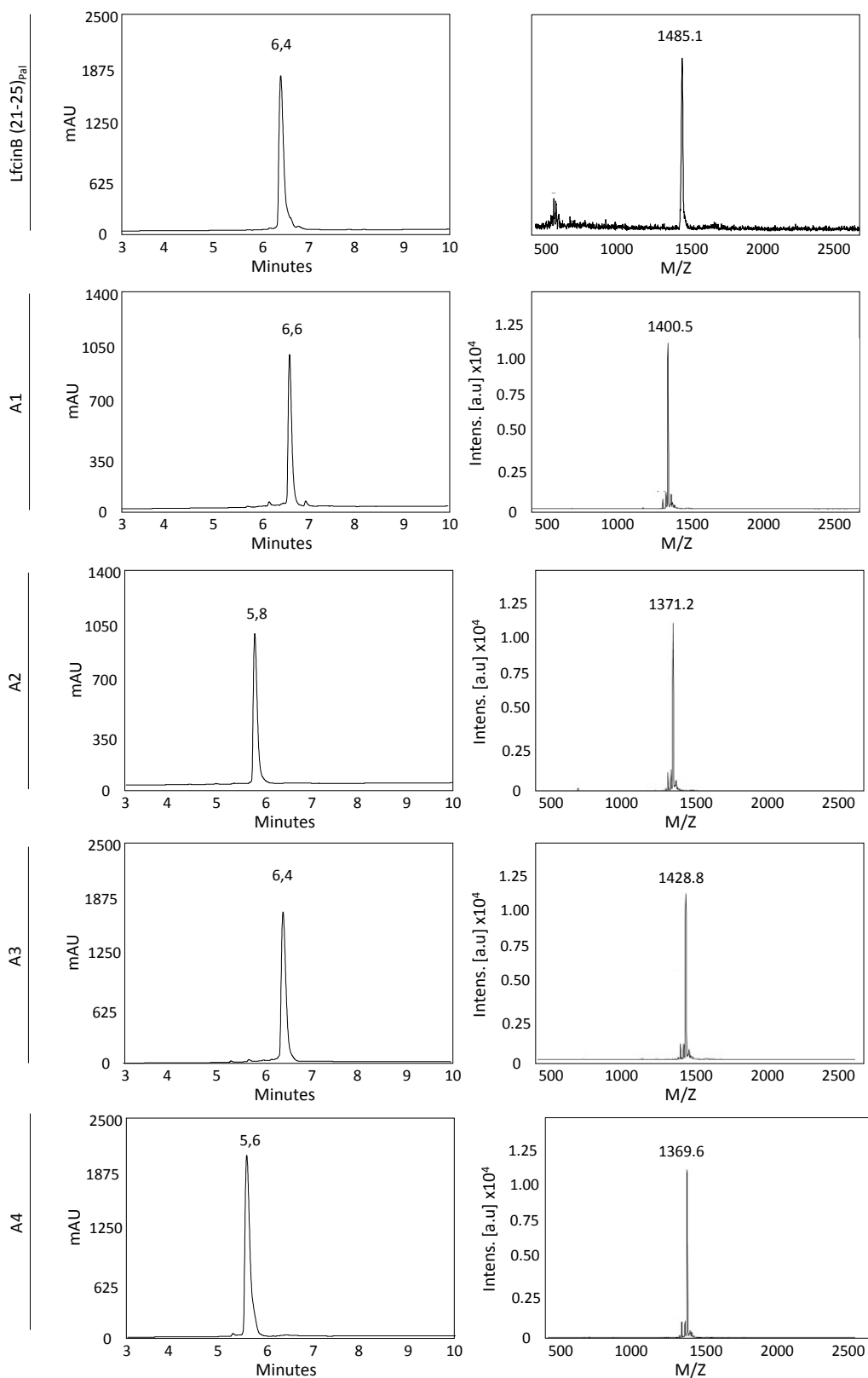


Supplementary Material:



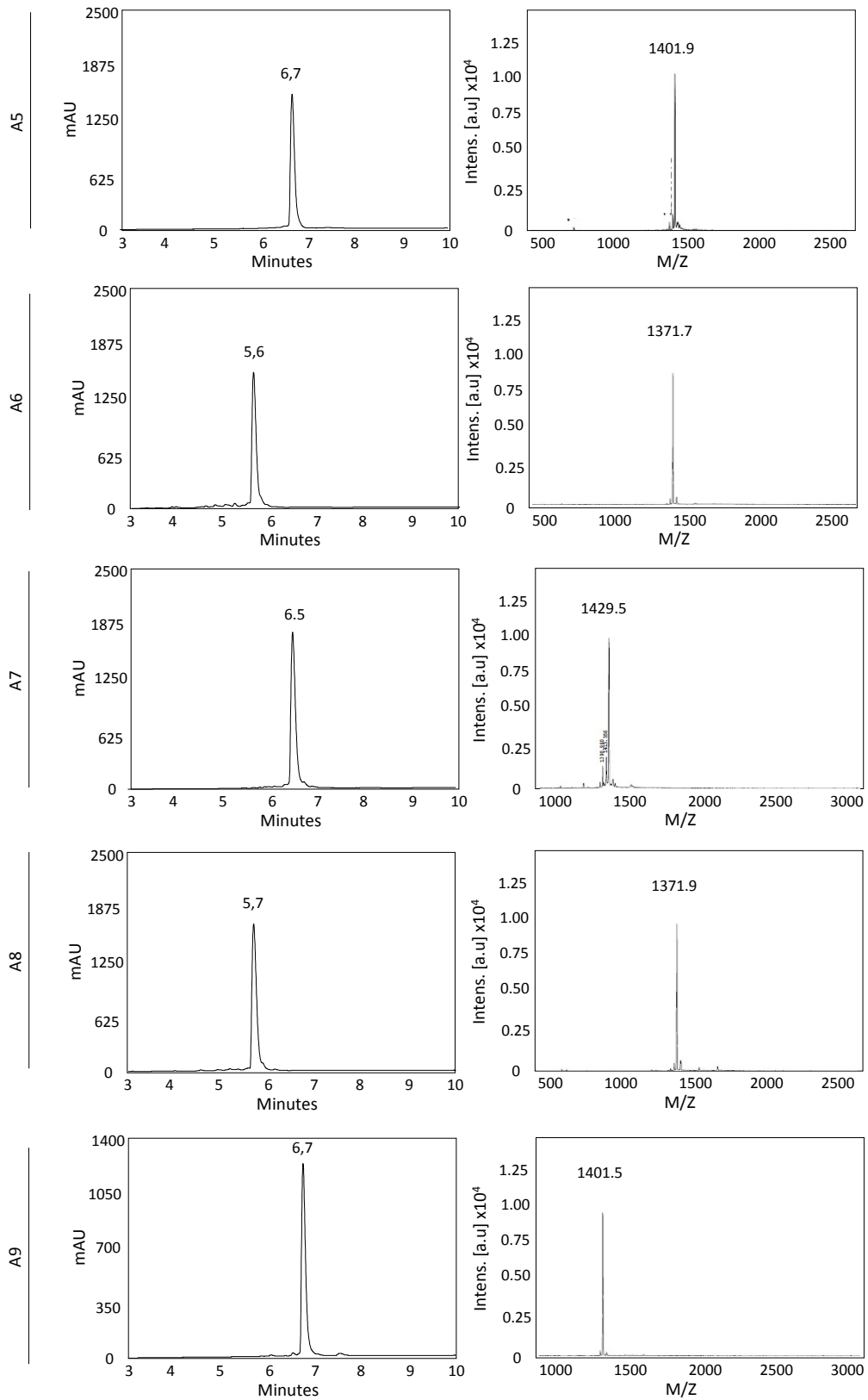
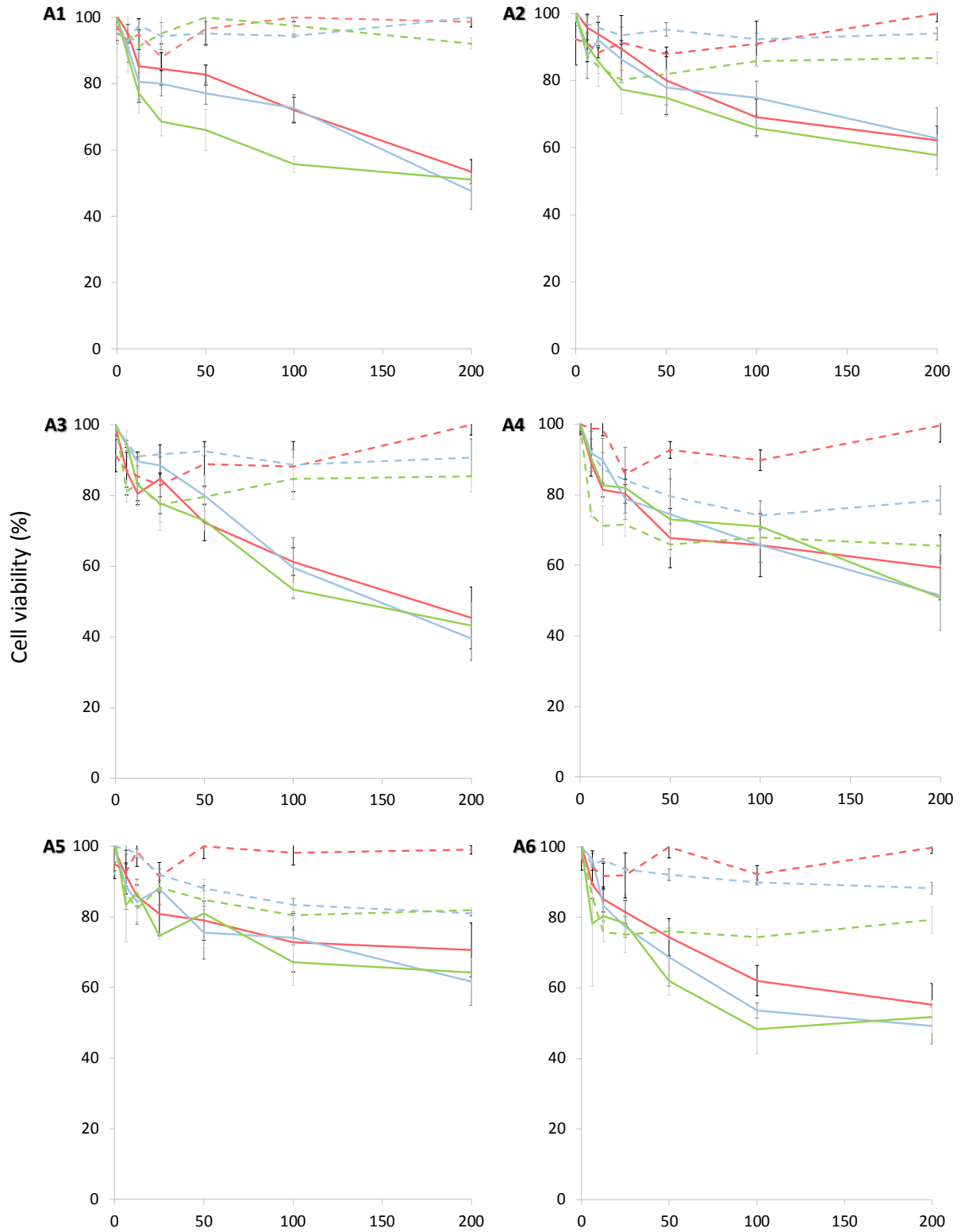


Fig. S1 Characterization of peptides, Reverse phase high performance liquid chromatography (RP-HPLC) analysis (left) and matrix-assisted laser desorption/ionization-time of flight mass spectrometry (MALDI-TOF) mass spectrum (right)



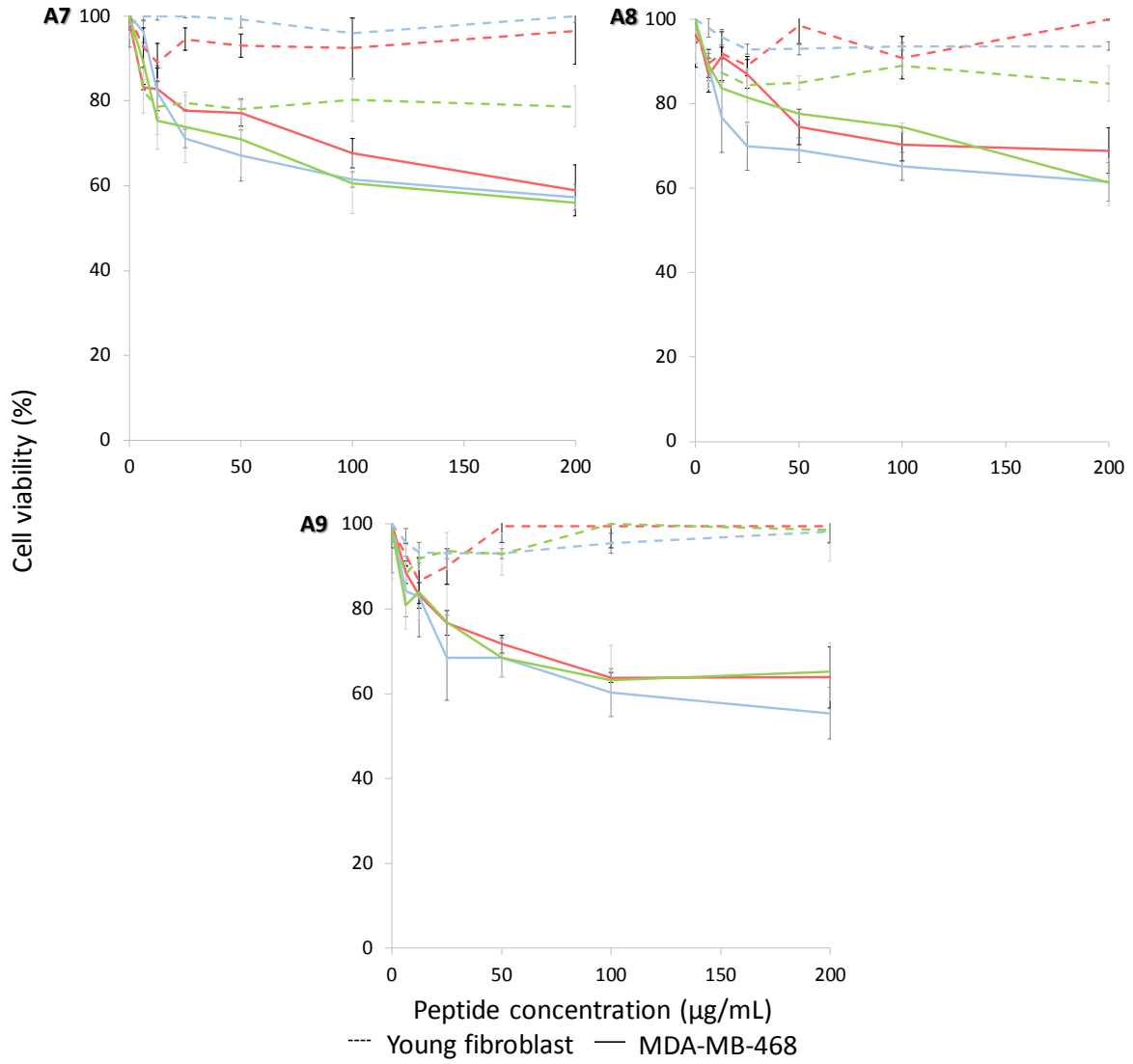


Fig. S2 Cytotoxic effect of analogue peptides against young fibroblast and MDA-MB-468 cells incubated at 2h (red), 24 h (blue) and 48 h (green).

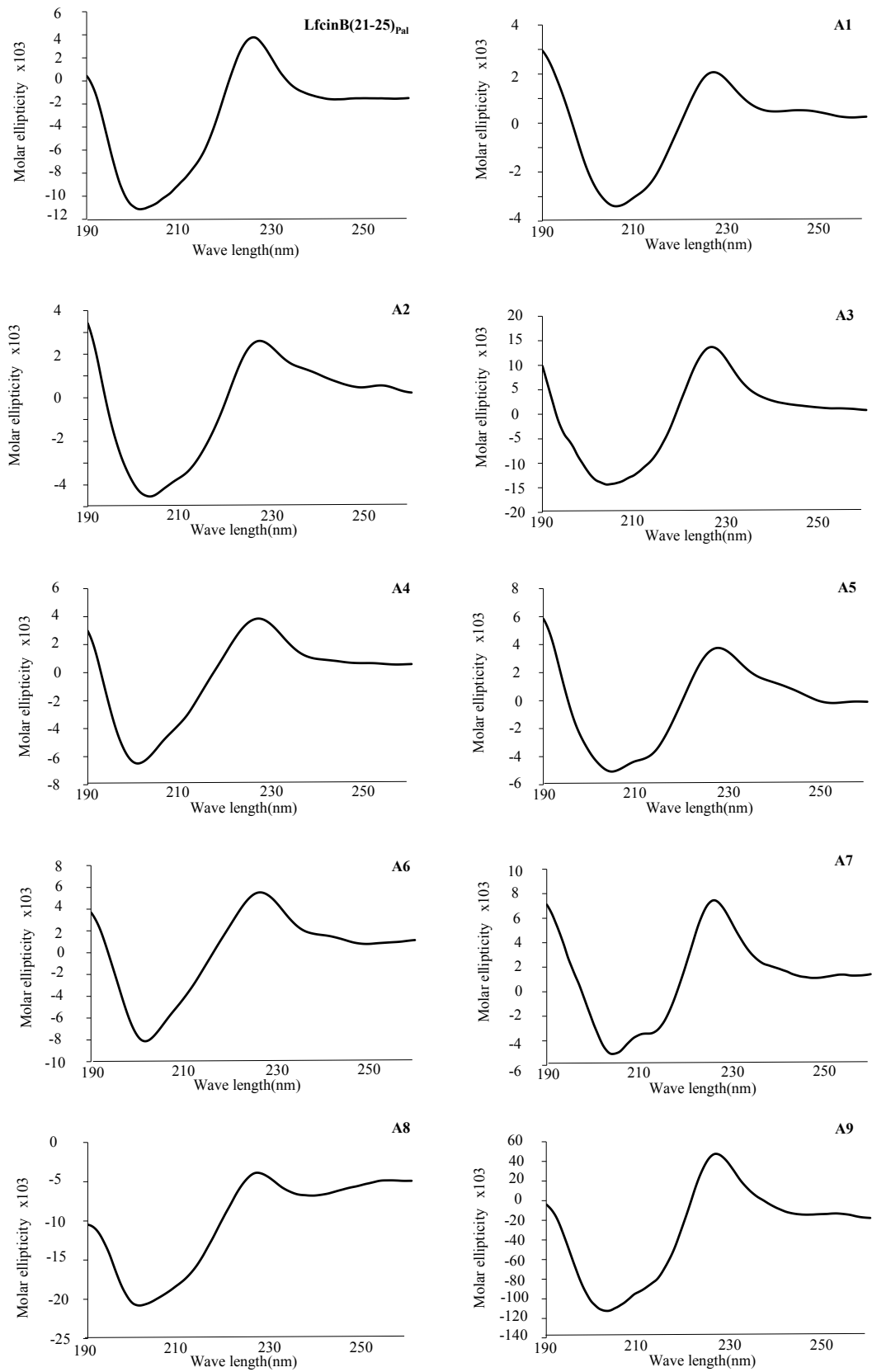


Fig. S3. Circular dichroism (CD) spectra of palindromic peptide and its analogues.