

Supporting information

Enhanced thermal stability of inverted perovskite solar cells by interface modification and additive strategy

Xueqing Zheng,^{1,a)} Tingming Jiang,^{2,a)} Lizhong Bai,² Xu Chen,² Zeng Chen,² Xuehui Xu,² Tianyu Liu,² Yizhi Liu,¹ Dongdong Song,¹ Xiaojian Xu,¹ Bo Li,^{*,1} and Yang (Michael) Yang^{*,2}

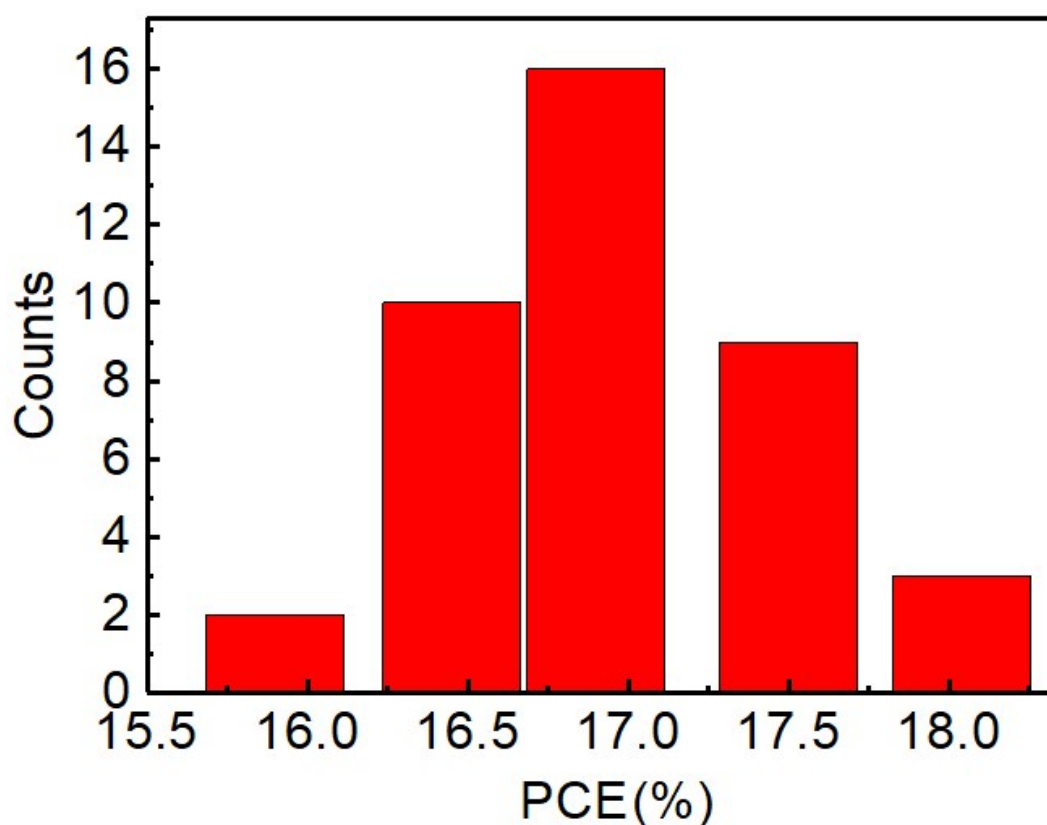


Fig S1, Histograms of PCEs of standard device with BCP layer (5 nm) and C₆₀ layer (25 nm), and device over 40 cells.

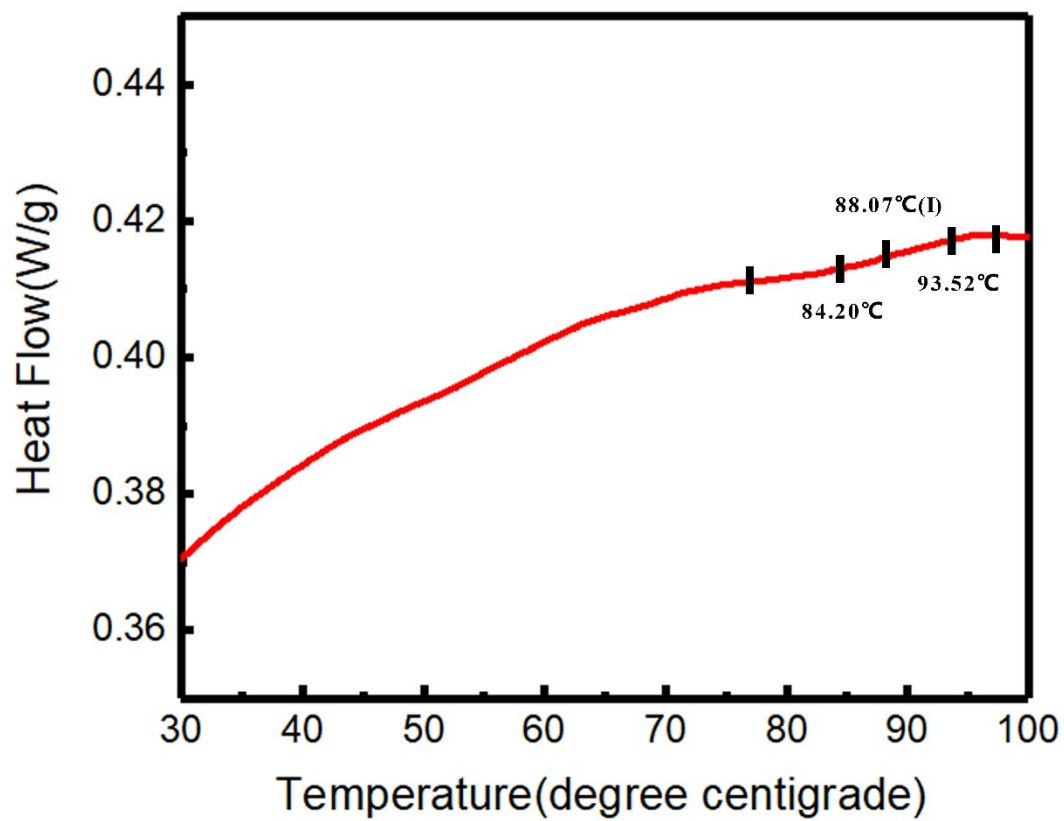


Fig S2, Differential Scanning Calorimetry (DSC) thermograph of BCP powder

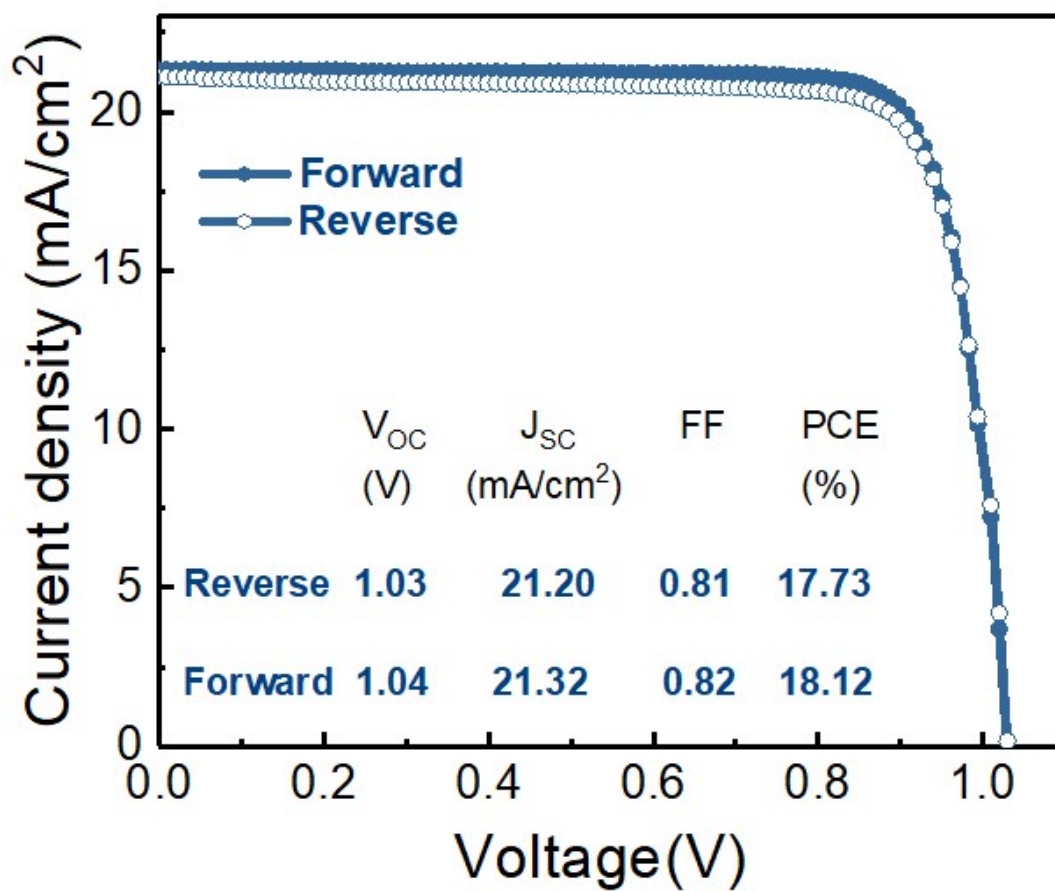


Fig S3 , J-V curves of the best-performing device under forward and reverse scans with photovoltaic parameters inserted, respectively.

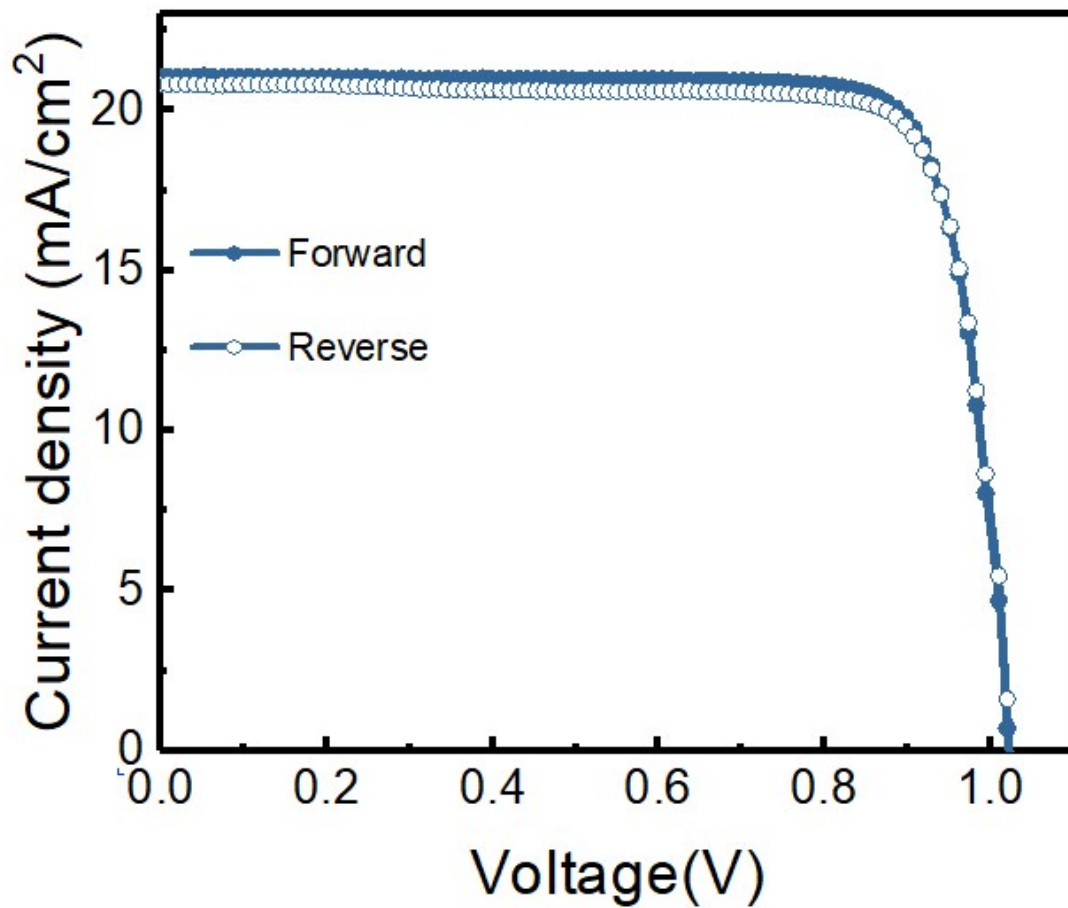
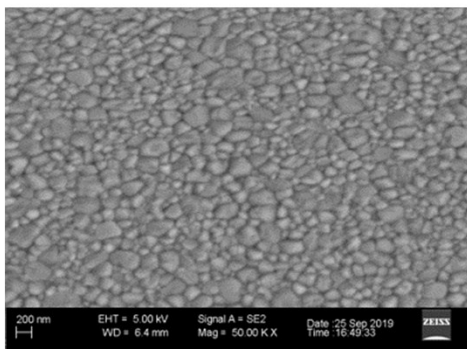
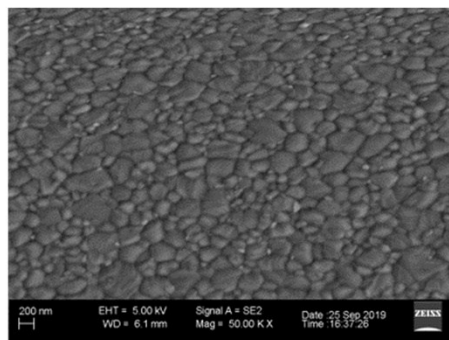


Fig S4, J-V curves of device with 0.4% BMIMBF₄ under forward and reverse scans with photovoltaic parameters inserted, respectively.

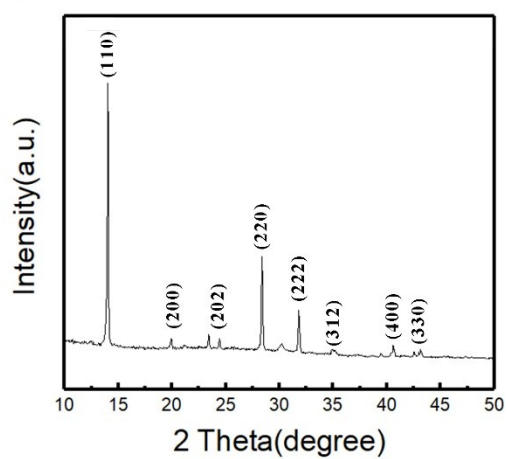
(a)



(b)



(c)



(d)

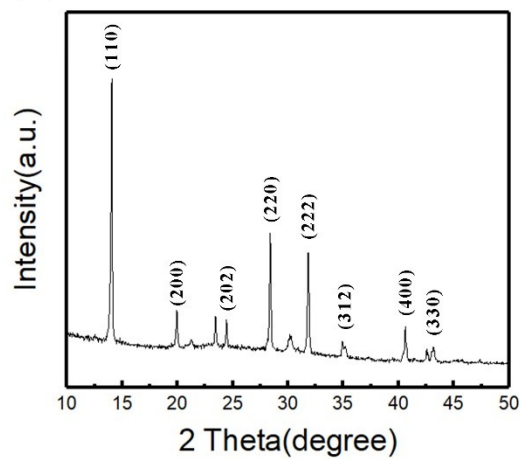


Fig S5, (a) SEM image of MAPbI₃; (b) SEM image of MAPbI₃ with BMIMBF₄; (c) XRD patterns of MAPbI₃; (d) XRD patterns of MAPbI₃ with BMIMBF₄.