

Supporting Information

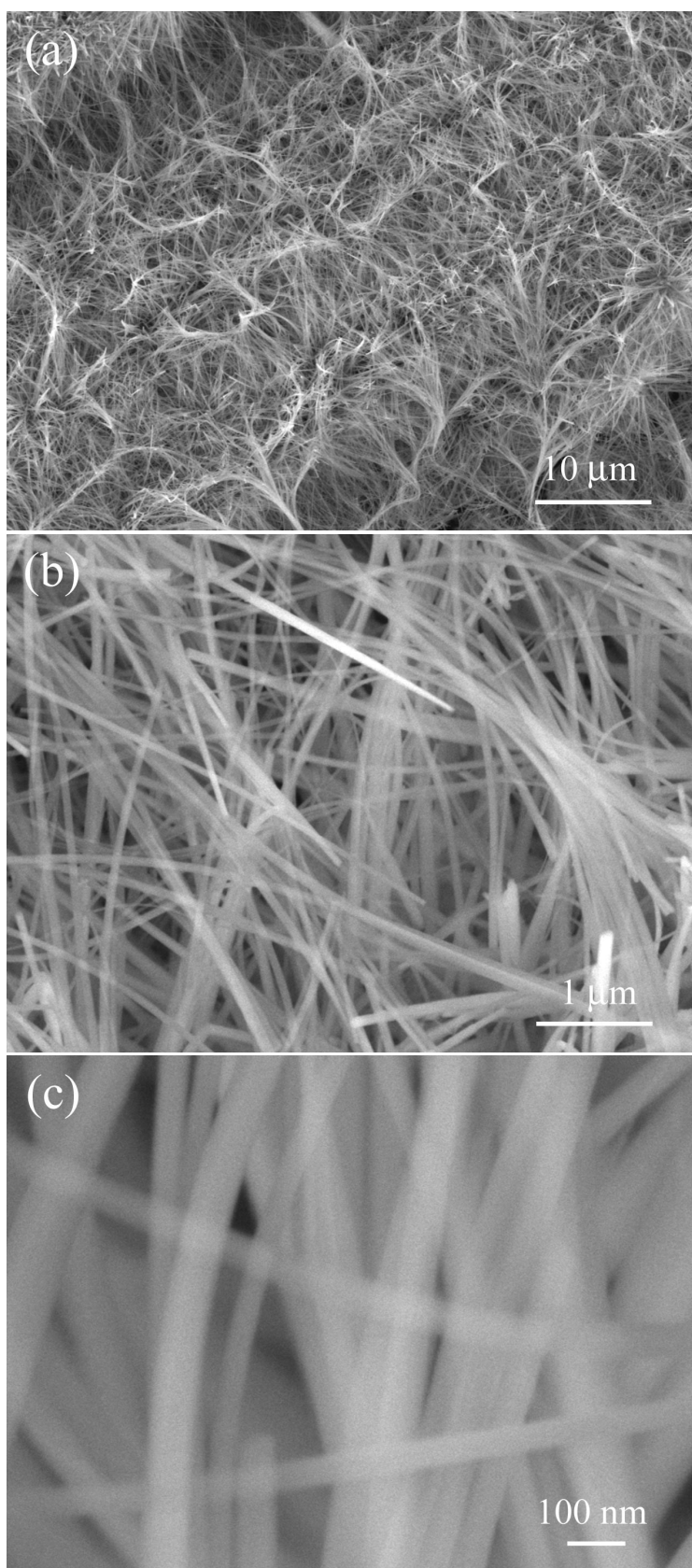


Figure S1 (a)–(c): SEM images of Co(OH)_2 nanowires grown on carbon cloth.

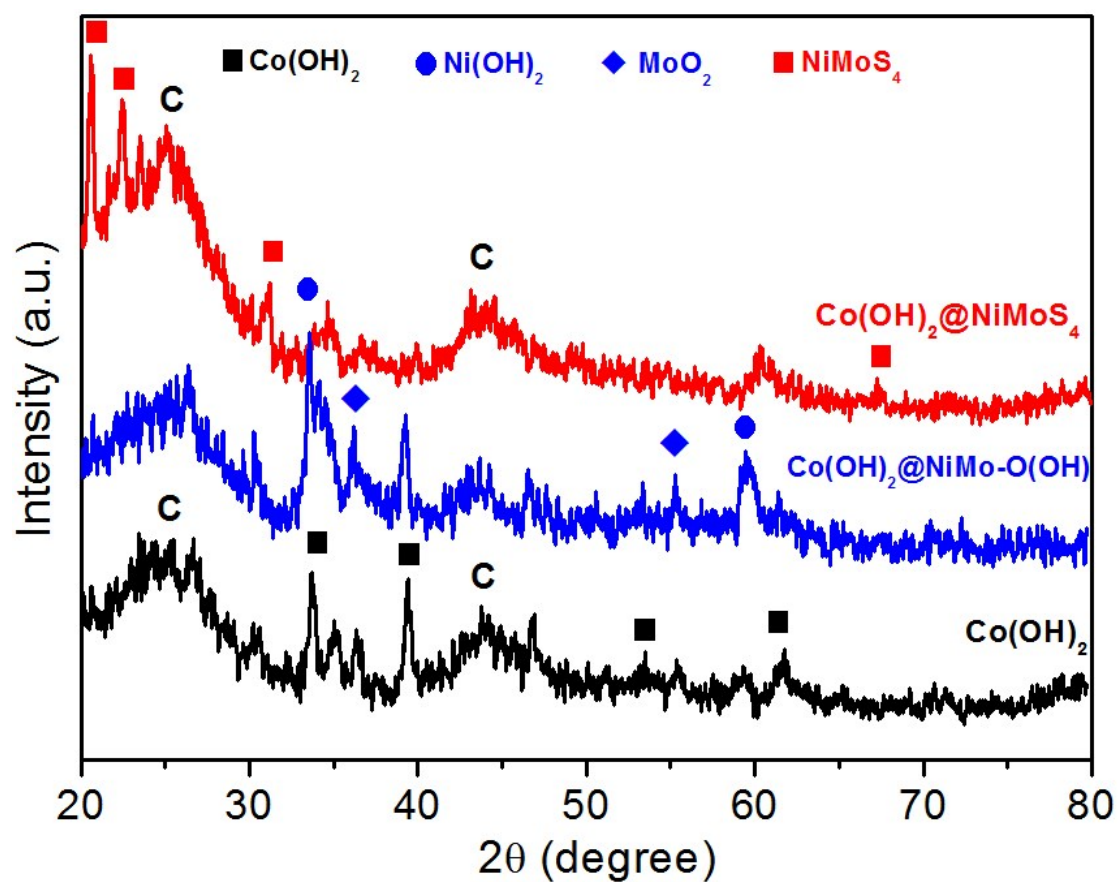


Figure S2 XRD patterns of the Co(OH)_2 , $\text{Co(OH)}_2\text{@NiMo-O(OH)}$, and $\text{Co(OH)}_2\text{@NiMoS}_4$. Inset: Co(OH)_2 (JCPDS No. 74-1057), Ni(OH)_2 (JCPDS No. 73-1520), MoO_2 (JCPDS No. 78-1071), NiMoS_4 (Reference JCPDS No. 78-1071).