

Table S1 Components of Japanese cedar, Cherry and Birch wood

	Wood components (wt%)			
	Extractives	Klason Lignin	Holo-cellulose	alpha-cellulose
<i>Cryptomeria japonica</i> (Cedar)	3.59 ±0.03	32.59 ±0.06	65.20 ±2.00	44.07 ±1.08
<i>Cerasus x yedoensis</i> (Cherry)	3.14 ±0.09	23.43 ±1.04	74.01 ±1.46	43.18 ±0.96
<i>Betula platyphylla</i> (Birch)	2.52 ±0.07	20.84 ±0.14	75.50 ±0.70	45.95 ±1.09

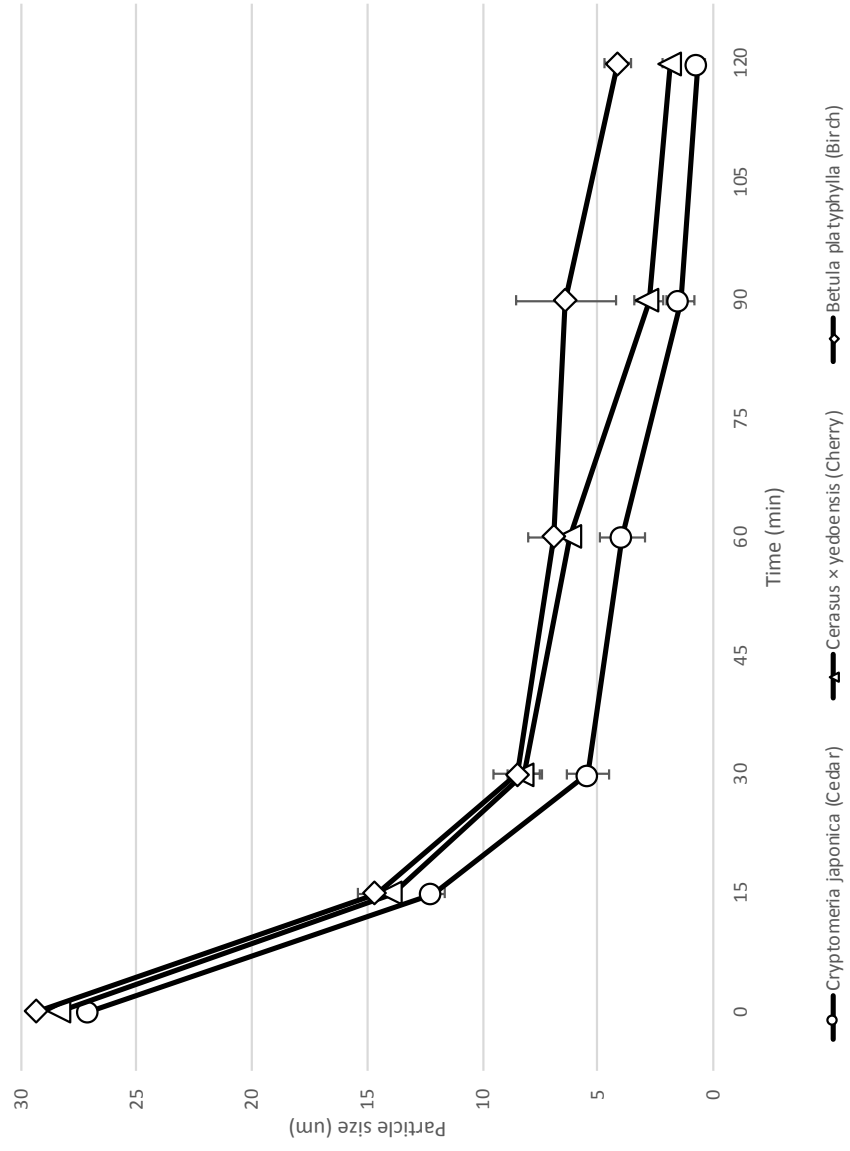


Fig.S1 Time course particle size of wood with bead mill treatment.

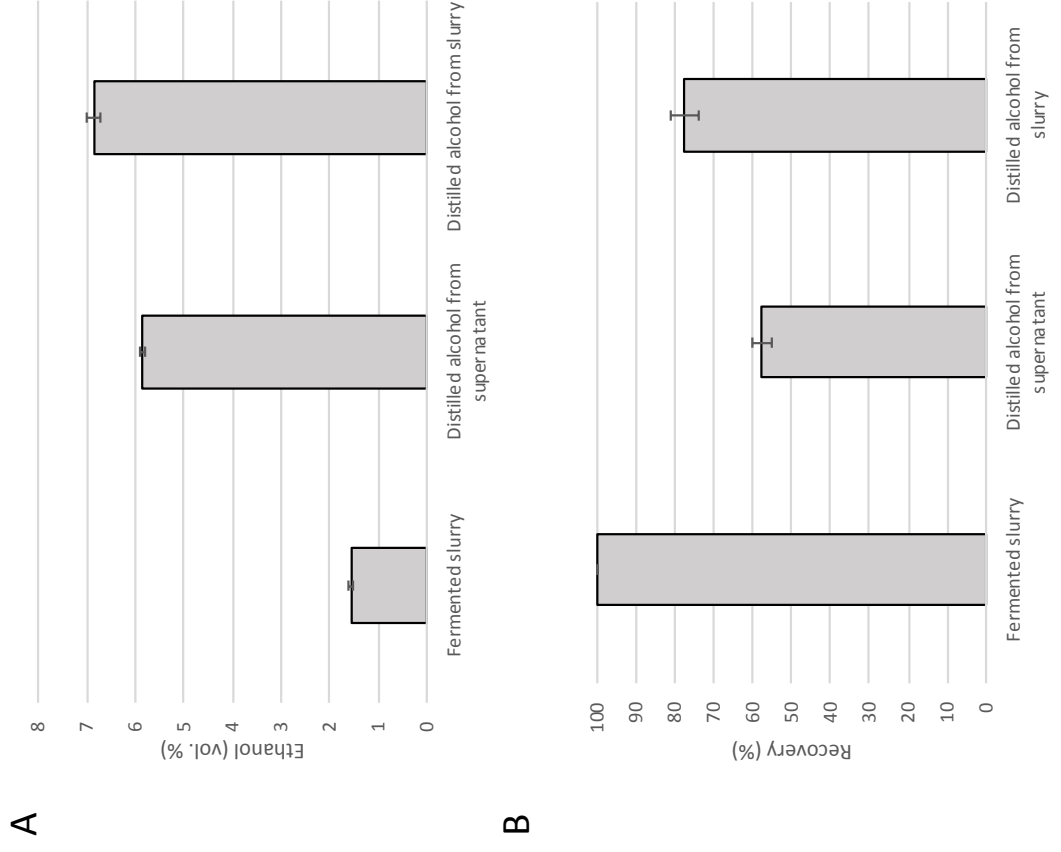


Fig.S2 Alcohol concentrations with distillation processes and recovery of alcohol from fermented slurry.

4
5

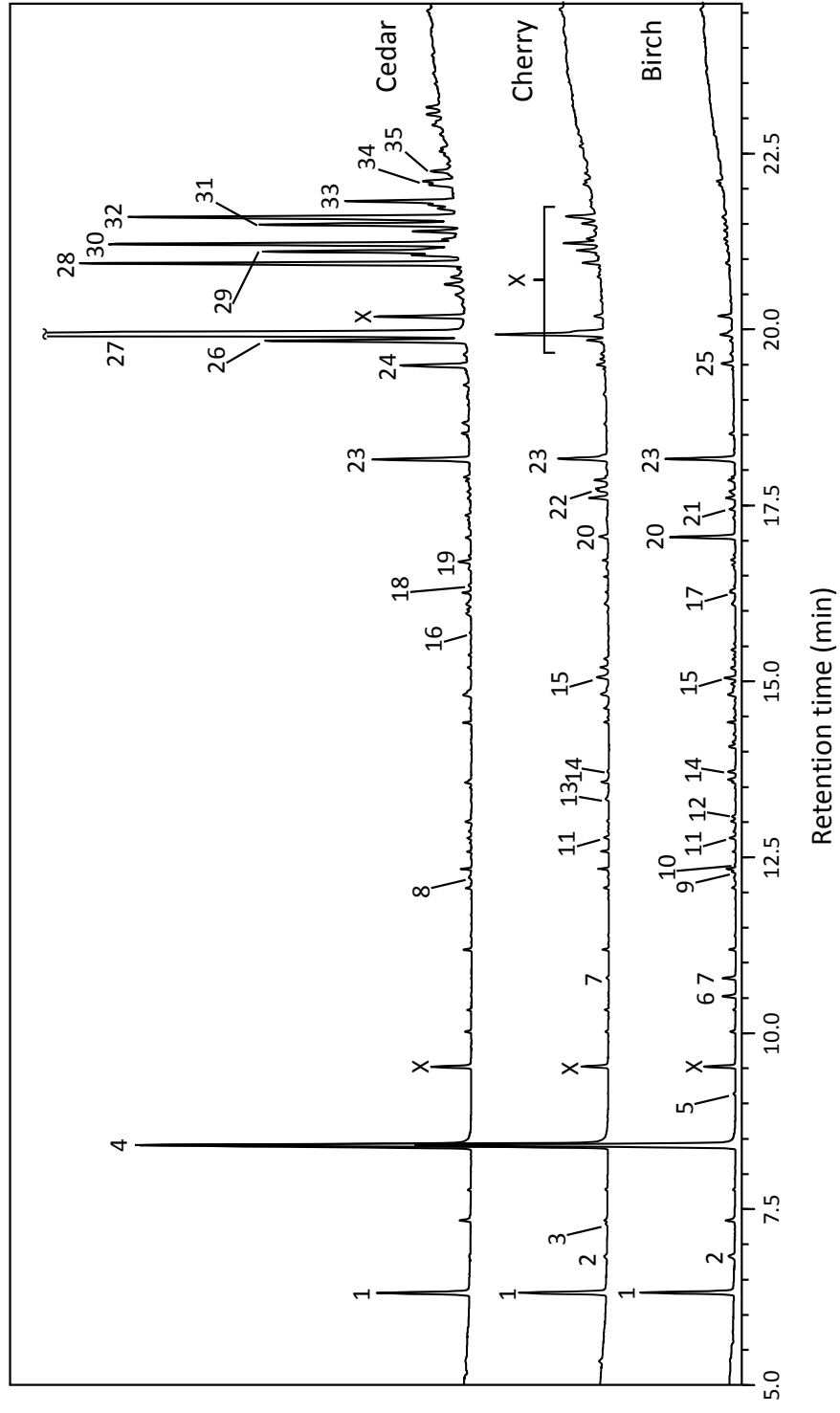


Fig. S3 Total ion-chromatograms of SPME-GC-MS analysis of Cedar, Cherry and Birch distillates.