

Two novel potent ACEI peptides isolated from *Pinctada fucata* meat hydrolysates using in silico analysis: identification, screening and inhibitory mechanisms

Jiao Li,^{abcd} Jilei Su,^{abcd} Min Chen,^{abcd} Wenping Ding,^{abcd} Yanqun Li^{abcd} and Hao Yin^{abc*}

a. CAS Key Laboratory of Tropical Marine Bio-resources and Ecology, South China Sea Institute of Oceanology, Chinese Academy of Sciences, Guangzhou510301, China.

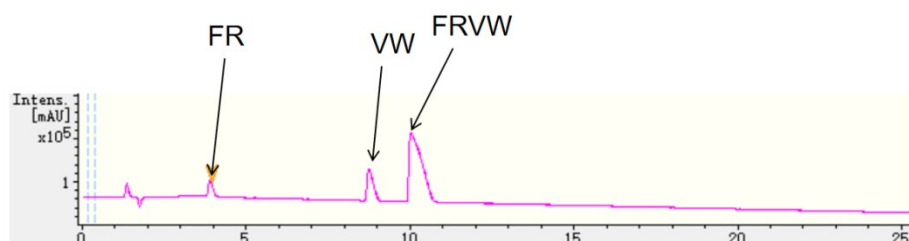
b. Guangdong Key Laboratory of Marine Material Medica, South China Sea Institute of Oceanology, Chinese Academy of Sciences, Guangzhou510301, China.

c. Southern Marine Science and Engineering Guangdong Laboratory (Guangzhou), Guangzhou511458, China.

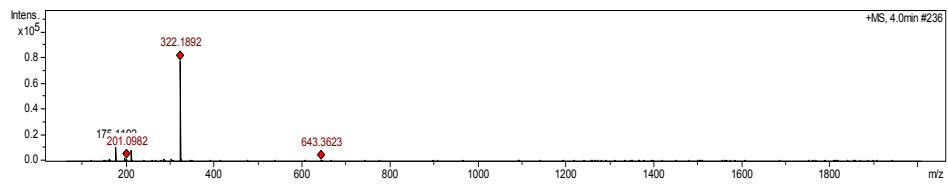
d. College of Earth and Planetary Sciences, University of Chinese Academy of Sciences, Beijing100049, China;

Contact email: yinhao@scsio.ac.cn

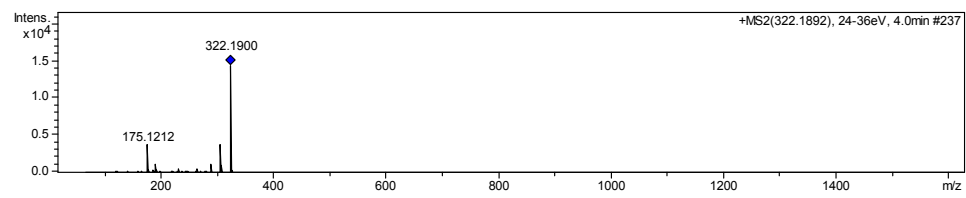
(A)



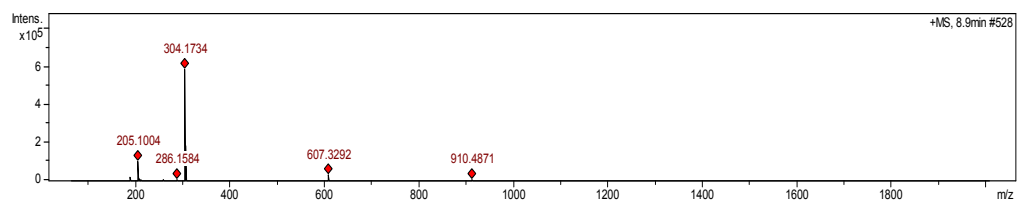
(B)



(C)



(D)



(E)

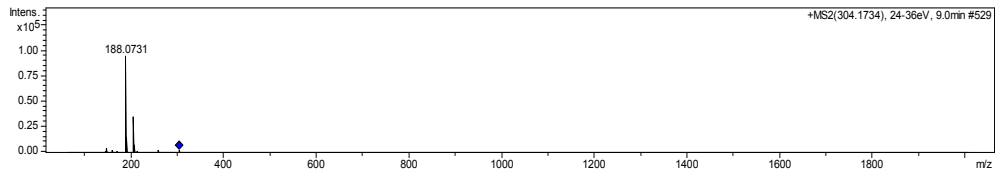
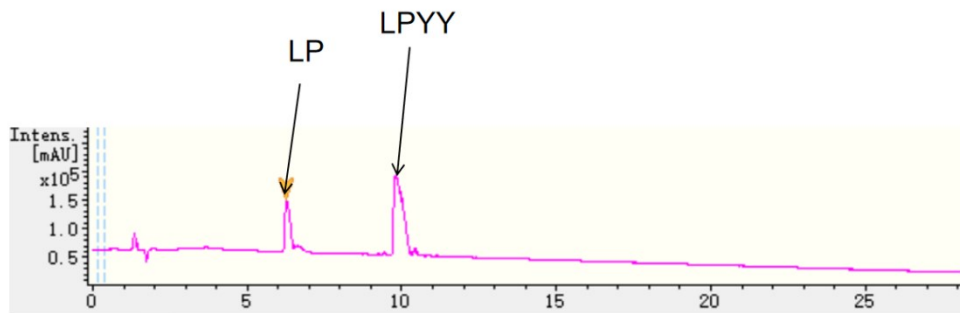
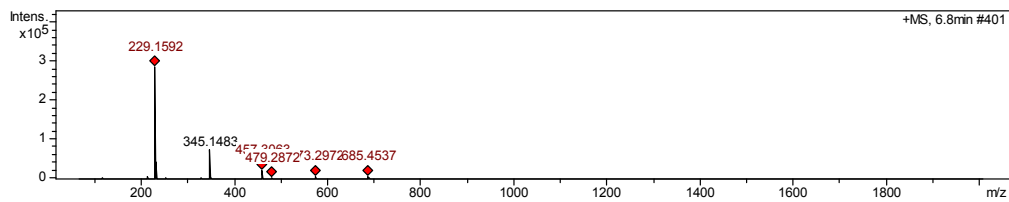


Figure S1. (A) LC-MS profile of FRVW pre-incubated with ACE at 37 °C for 3 h. (B) MS spectrum of fragment FR (m/z322.1892), (C) MS/MS spectrum of fragment FR (m/z322.1892), (D) MS spectrum of fragment VW (m/z304.1734), and (E) MS/MS spectrum of fragment VW (m/z304.1734) derived from FRVW pre-incubated with ACE at 37 °C for 3 h.

(A)



(B)



(C)

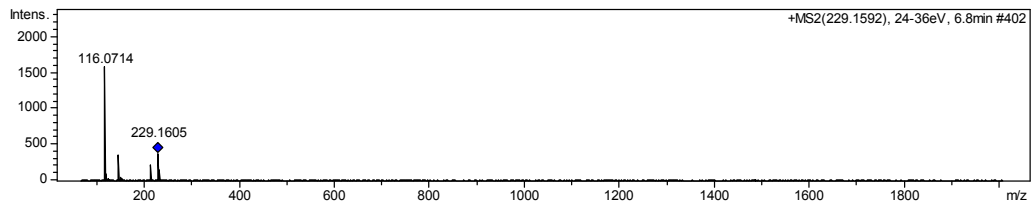


Figure S2. (A) LC-MS profile of LPYY pre-incubated with ACE at 37 °C for 3 h. (B) MS spectrum of fragment LP (m/z229.1592), (B) MS/MS spectrum of fragment LP (m/z 229.1592) derived from LPYY pre-incubated with ACE at 37 °C for 3 h.