

## Electronic Supplementary Information

### **Electrocatalytic activity compensation mechanism upon long-term operation of solid oxide fuel cells; LSCM cathode/SDC interlayer/YSZ electrolyte system**

Toshiaki Matsui <sup>a), \*</sup>, Norifumi Yoshida <sup>a)</sup>, Hiroki Muroyama <sup>a)</sup>, and Koichi Eguchi <sup>a)</sup>

a) Department of Energy and Hydrocarbon Chemistry, Graduate School of Engineering,  
Kyoto University, Nishikyo-ku, Kyoto 615-8510, Japan

\* Correspondence should be addressed to

Toshiaki Matsui

Department of Energy and Hydrocarbon Chemistry,

Graduate School of Engineering, Kyoto University,

Nishikyo-ku, Kyoto 615-8510, JAPAN

TEL: +81-75-383-7060, FAX: +81-75-383-2520

E-mail: matsui@elech.kuic.kyoto-u.ac.jp

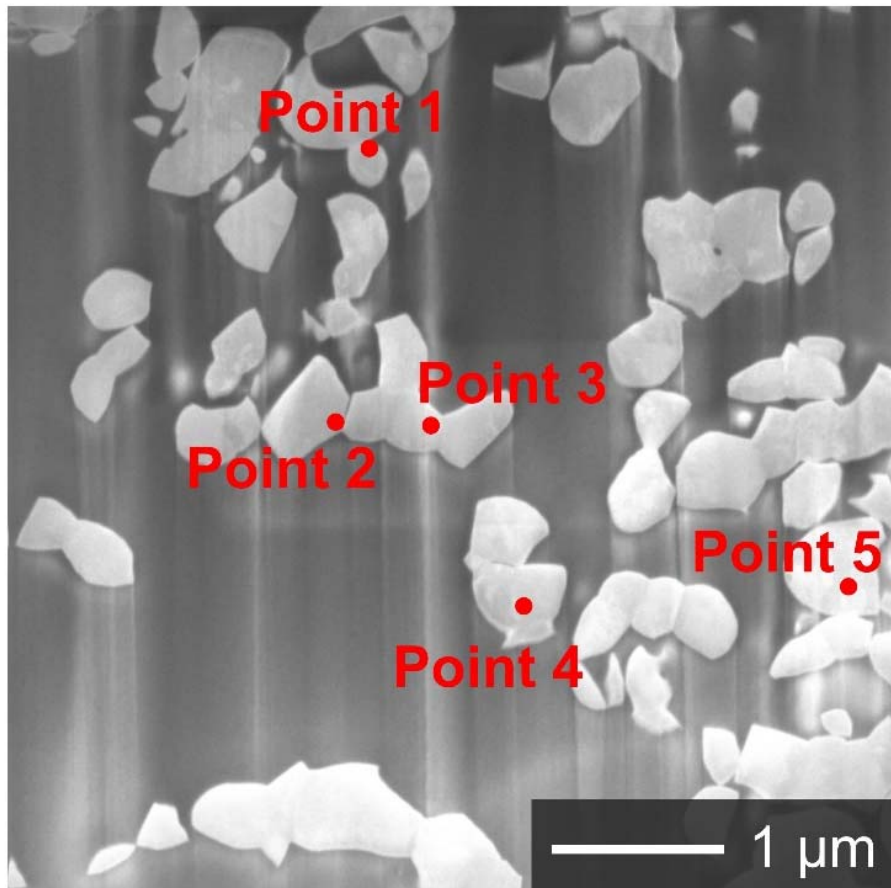


Fig. S1 Cross-sectional SE image of SCM60-SDC composite after the HCl treatment.

Fig. S1 T. Matsui et al.

Table S1 EDS point analysis of SCM60–SDC composite after the HCl treatment in Fig. S1.

	Element					Main phase
	Sm	Ca	Mn	Ce	O	
Point 1	1.6	–	–	30.0	68.4	
Point 2	1.9	–	–	28.1	70.0	SDC
Point 3	1.9	–	–	28.1	70.0	
Point 4	2.5	–	–	28.9	68.5	