

ARTICLE

Site-specific release of reactive oxygen species from ordered arrays of microchambers based on polylactic acid and carbon nanodots

Received 00th January 20xx,
Accepted 00th January 20xx

DOI: 10.1039/x0xx00000x

Alexey V. Ermakov^{*a,b}, Valeriya L. Kudryavtseva^{c,d}, Polina A. Demina^a, Roman A. Verkhovskii^a, Jiaxin Zhang^c, Ekaterina V. Lengert^a, Andrey V. Sapelkin^{a,c}, Irina Yu. Goryacheva^a, Gleb B. Sukhorukov^{a,b,c}

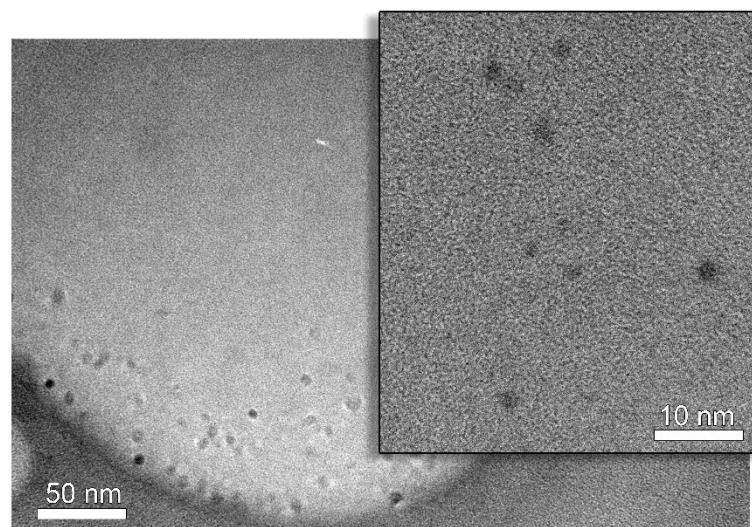


Fig. S1 Typical High-resolution TEM images of CND obtained from dextran sulfate.

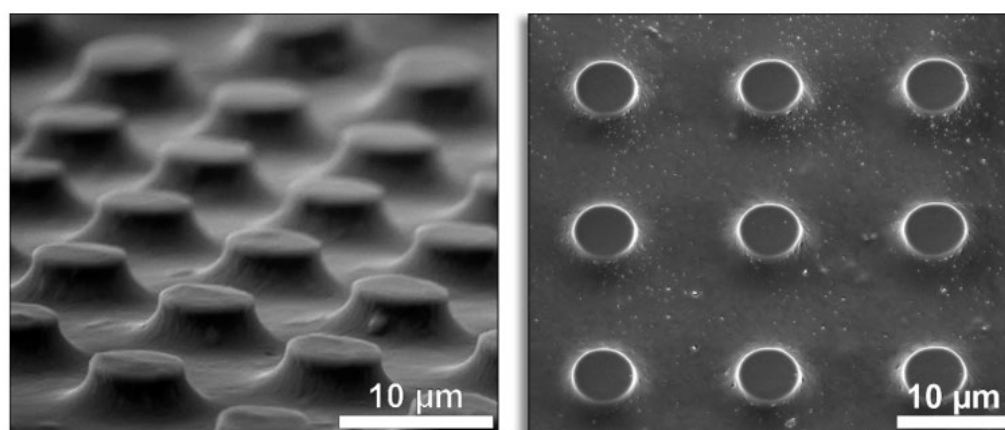


Fig. S2 Typical SEM images of the sealed sodium percarbonate containing PLA (left) and PLA/CND (right) microchambers.

^a N.G. Chernyshevsky Saratov State University, 83 Astrakhanskaya Street Saratov 410012, Russia

^b I.M. Sechenov First Moscow State Medical University, Moscow 119991, Russia

^c Queen Mary University of London, Mile End Road, London E1 4NS, UK

^d National Research Tomsk Polytechnic University, 30 Lenin Avenue, Tomsk 634050, Russian

Electronic Supplementary Information (ESI) available: [details of any supplementary information available should be included here]. See DOI: 10.1039/x0xx00000x

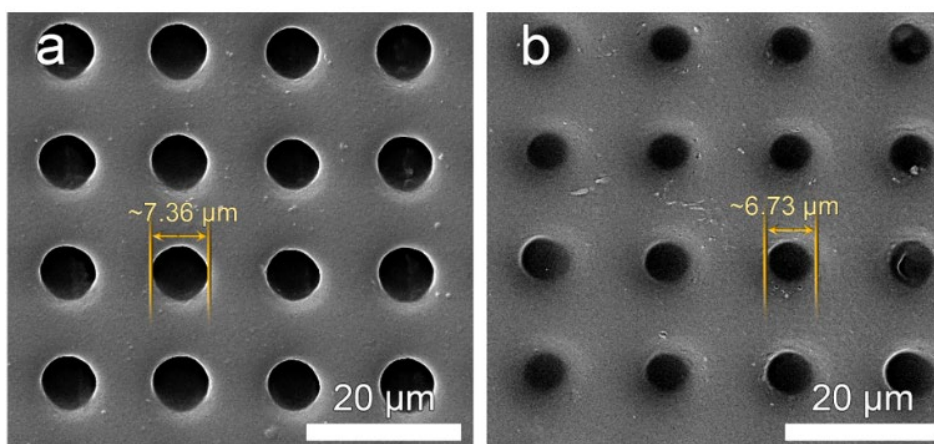


Fig. S3 SEM images of wells before (a) and after (b) covering with PLA layer.

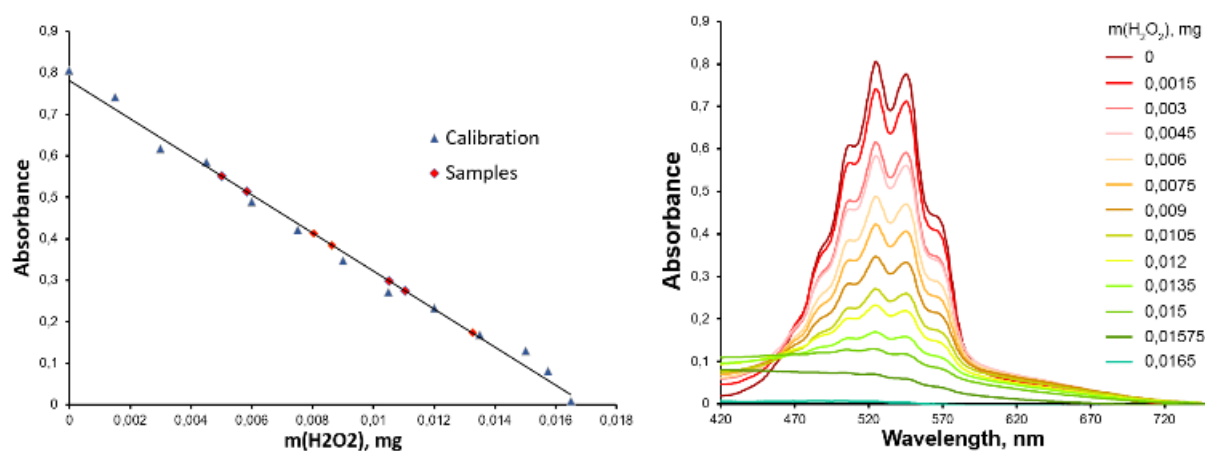


Fig. S4 Spectrums of potassium permanganate after reaction with H₂O₂ of different mass and corresponding calibration curve. Green and red points show mass of H₂O₂ found in microchambers arrays.

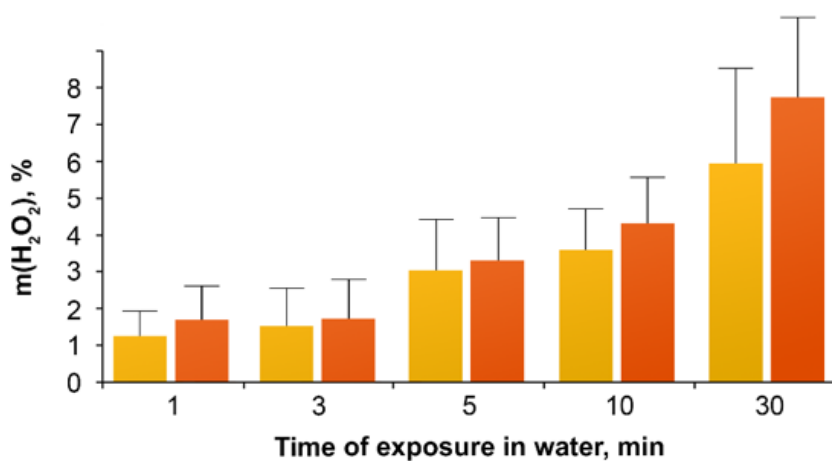


Fig. S5 Graph profile of the spontaneous release in the first 30 min of microchambers' exposure in water.

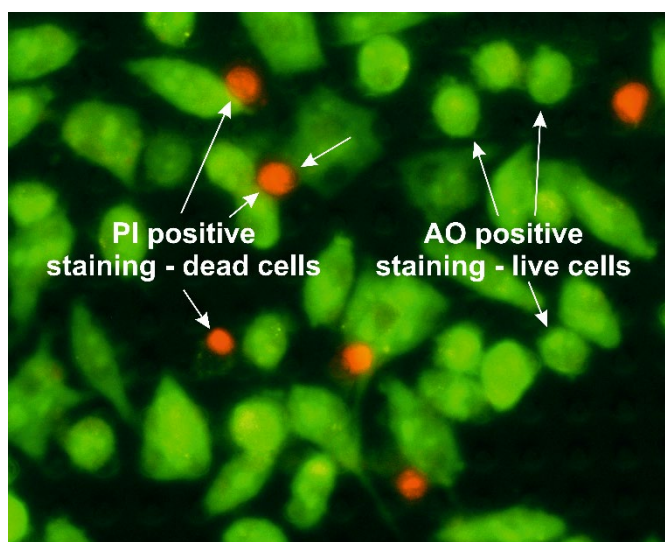


Fig. S6 Fluorescent image of live and dead L929 cells stained with AO/PI (green cells – AO positive staining – live cells; red cells – PI positive staining – dead cells) adhered to the surface of microchambers.

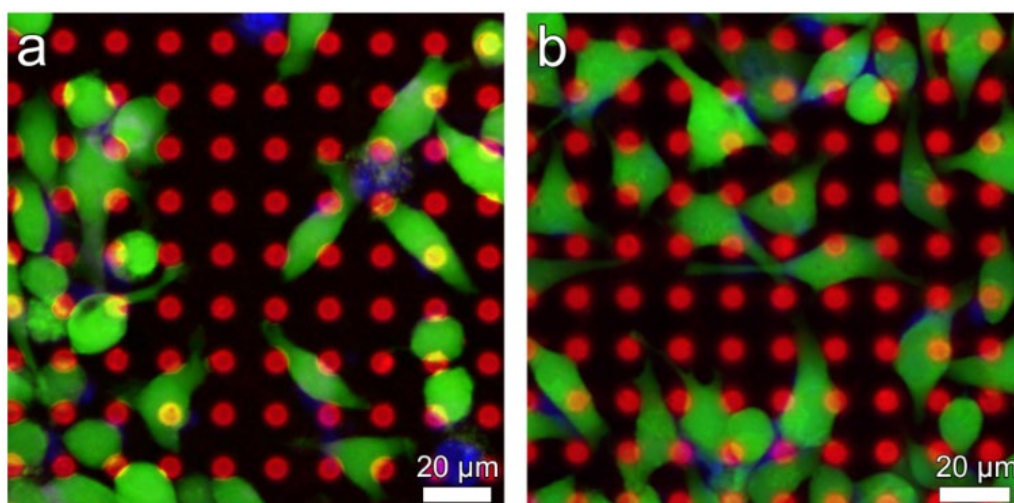


Fig. S7 CLSM images of L929 cells stained with Calcein-AM adhered to the surface of Nile red-labelled empty microchambers (a) and loaded with sodium percarbonate (b).