

## **Black Titanium Dioxide@Manganese Dioxide for Glutathione-Responsive MR Imaging and Enhanced Photothermal Therapy**

Yang Gao<sup>1,3#</sup>, Zhibin Yin<sup>1#</sup>, Qian Ji<sup>2\*</sup>, Jiabing Jiang<sup>2</sup>, Zhengzheng Tao<sup>2</sup>, Xiaolong Zhao<sup>1</sup>, Sijia Sun<sup>1</sup>, Aiguo Wu<sup>3\*</sup>, Leyong Zeng<sup>1\*</sup>

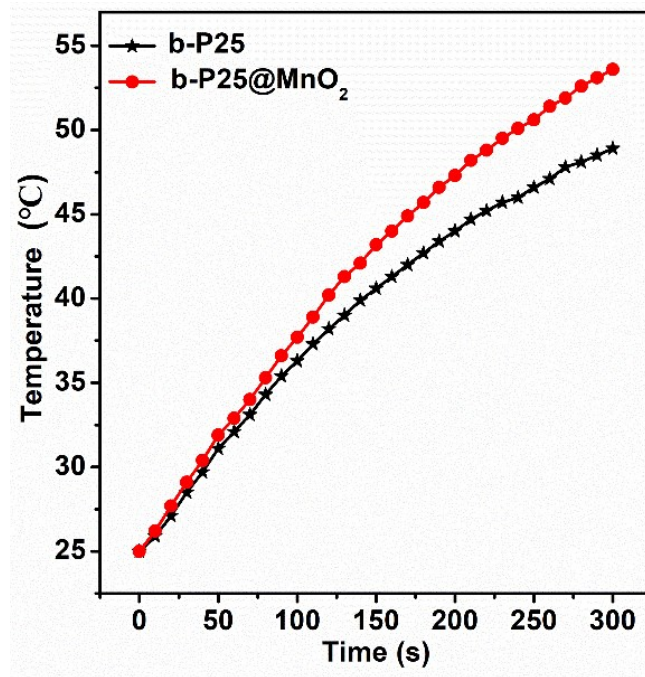
<sup>1</sup> *Key Laboratory of Medicinal Chemistry and Molecular Diagnosis of the Ministry of Education, Chemical Biology Key Laboratory of Hebei Province, College of Chemistry & Environmental Science, Institute of Life Science and Green development, Hebei University, Baoding 071002, P.R. China.*

<sup>2</sup> *Department of Radiology, Tianjin First Central Hospital, First Central Clinical College of Tianjin Medical University, Tianjin, 300192, P.R. China.*

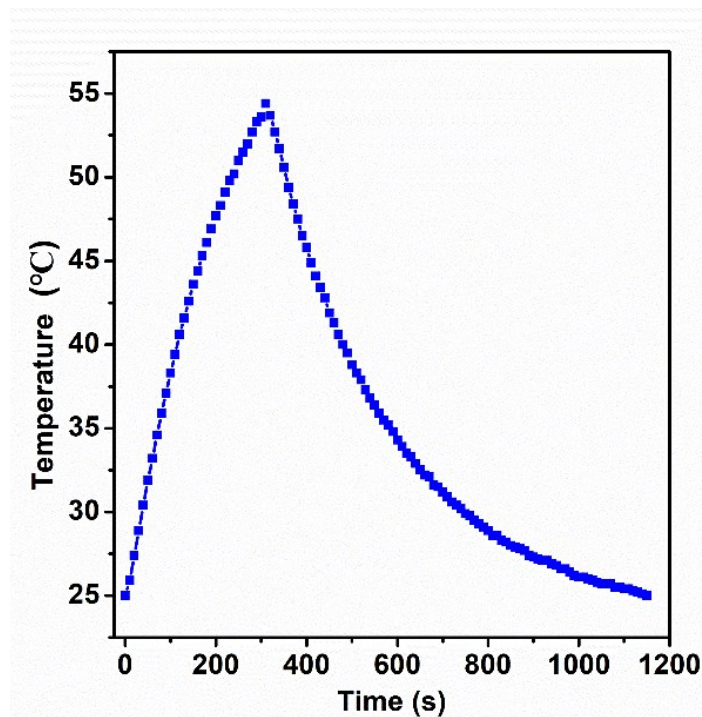
<sup>3</sup> *Cixi Institute of Biomedical Engineering, CAS Key Laboratory of Magnetic Materials and Devices, Ningbo Institute of Materials Technology and Engineering, Chinese Academy of Sciences, Ningbo, 315201, P.R. China.*

#These authors contributed equally to this work.

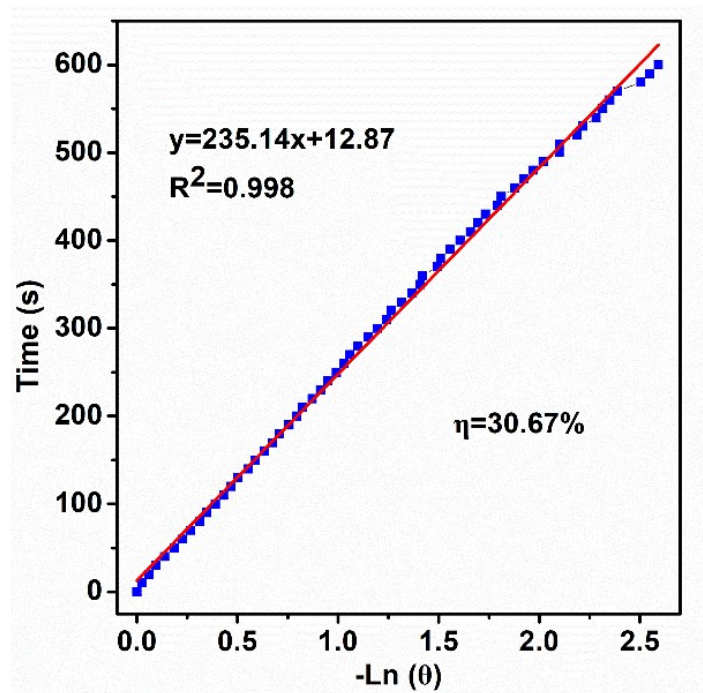
\*Corresponding authors. E-mail: zengly@hbu.cn (L. Zeng); aiguo@nimte.ac.cn (A. Guo); jiqianq@aliyun.com (Q. Ji).



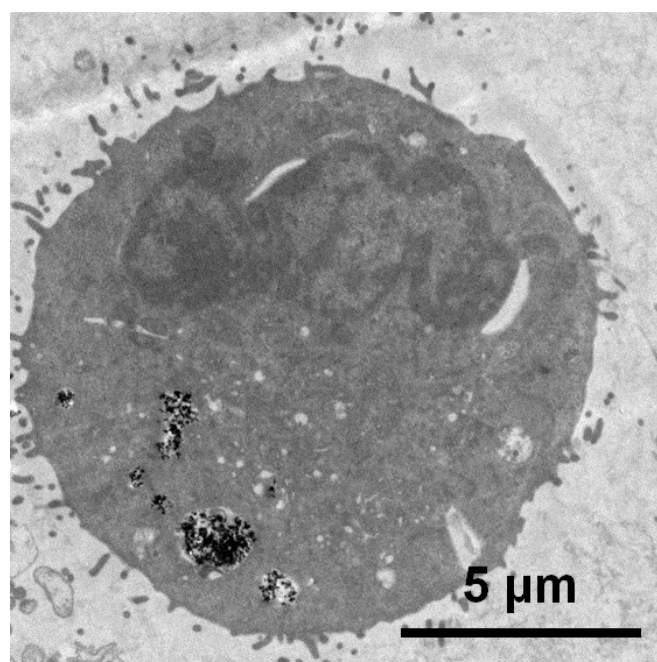
**Figure S1.** Temperature change curves of b-P25 and b-P25@MnO<sub>2</sub> irradiated by an 808 nm laser (1.2 W/cm<sup>2</sup>).



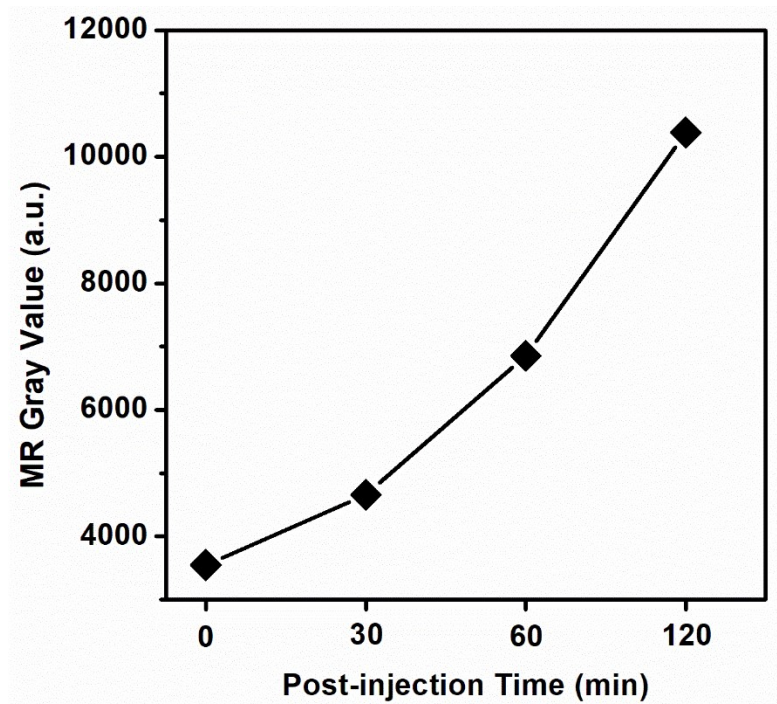
**Figure S2.** Temperature ascending and descending curve of b-P25@MnO<sub>2</sub>.



**Figure S3.** Plot of time versus  $-\ln\theta$  in the descending stage.



**Figure S4.** Bio-TEM image of whole 4T1 cell incubated with b-P25@MnO<sub>2</sub>.



**Figure S5.** Gray value curve of *in vivo* MR signal at different time points of post-injection with b-P25@MnO<sub>2</sub>.