

## Supplementary Information

### **MCR-ALS with Sample Insertion Constraint to Enhance the Sensitivity of Surface-Enhanced Raman Scattering Detection**

Nontawat Scricharoen<sup>a,d</sup>, Thanyada Sukmanee<sup>a</sup>, Prompong Pienpinijtham<sup>a,d</sup>, Sanong Ekgasit<sup>a</sup>,  
Yasutaka Kitahama<sup>b</sup>, Yukihiro Ozaki<sup>b</sup>, and Kanet Wongravee<sup>a,c \*</sup>

<sup>a</sup> Sensor Research Unit (SRU), Department of Chemistry, Faculty of Science, Chulalongkorn University, Bangkok, Thailand, 10330.

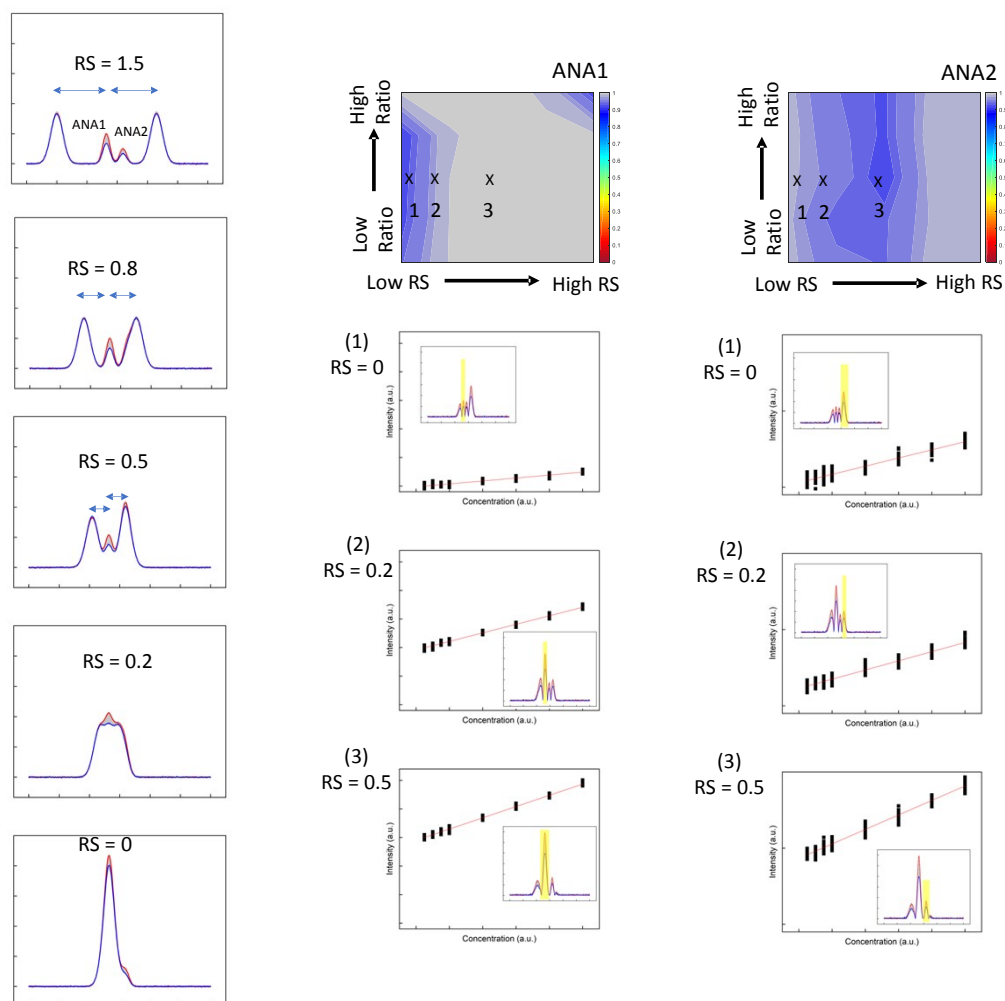
<sup>b</sup> Department of Chemistry, School of Science and Technology, Kwansai Gakuin University, Sanda, Hyogo, 669-1337, Japan

<sup>c</sup> National Nanotechnology Center of Advanced Structural and Functional Nanomaterials, Faculty of Science, Chulalongkorn University, Bangkok, 10330 Thailand

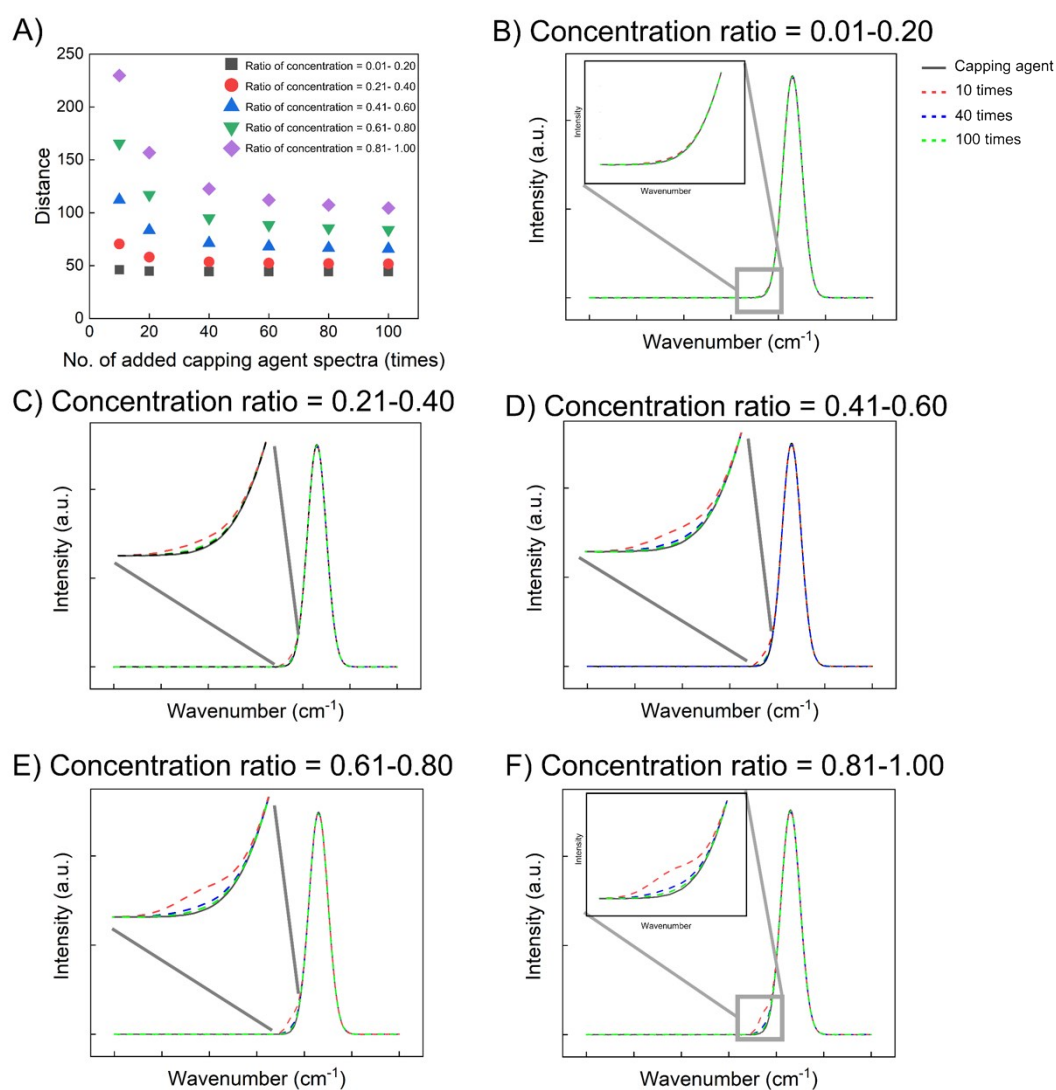
<sup>d</sup> Center of Excellence in Bioactive Resources for Innovative Clinical Applications, Chulalongkorn University, Bangkok 10330, Thailand.

\*corresponding author

Email : [kanet.w@chula.ac.th](mailto:kanet.w@chula.ac.th)



**Figure S1** (Left) The simulated spectra with different overlapping characteristics between two analytes (ANA1, ANA2) and a capping agent (CAP). (Right) The contour map of  $R^2$  value of the calibration curves calculated from the analyte peaks (ANA1 and ANA2) extracted with MCR-ALS with the sample insertion constrain. The calibration curve plots from point (1), (2) and (3) on the contour maps with the inset figures as the analyte peaks after extraction.



**Figure S2** (A) The Euclidean distances of the pre-set spectra and the extracted spectra of capping agent at the various numbers of the added capping agent. The black square, red circle, blue triangle, green triangle, and purple diamond are the distance at the different concentration ratios from 0.01-0.20, 0.21-0.40, 0.41-0.60, 0.61-0.80, and 0.81-1.00, respectively. (B) the pre-set spectra (black line) and the extracted spectra of the capping agent using sample insertion at 10 (red dash line), 40 (blue dash line) and 100 (green dash line) times, respectively. The inset figures show the spectra at the 1700  $\text{cm}^{-1}$  with condition of  $RS = 0.5$ .

