

## Supporting Information

### **A cyclic peptide antenna ligand for enhancing terbium luminescence**

Fei Ji,<sup>a, †</sup> Shiqun Shao,<sup>a, †</sup> Zhonghan Li,<sup>a</sup> Siwen Wang,<sup>a</sup> Rohit Chaudhuri,<sup>a</sup> Zhili Guo,<sup>a</sup>

Nicole G. Perkins,<sup>a</sup> Priyanka Sarkar,<sup>a</sup> and Min Xue<sup>a,\*</sup>

<sup>a</sup>Department of Chemistry, University of California, Riverside, Riverside, California 92521,  
United States

Corresponding Author: Min Xue

E-mail: [minxue@ucr.edu](mailto:minxue@ucr.edu)

Phone: +1-951-8274865



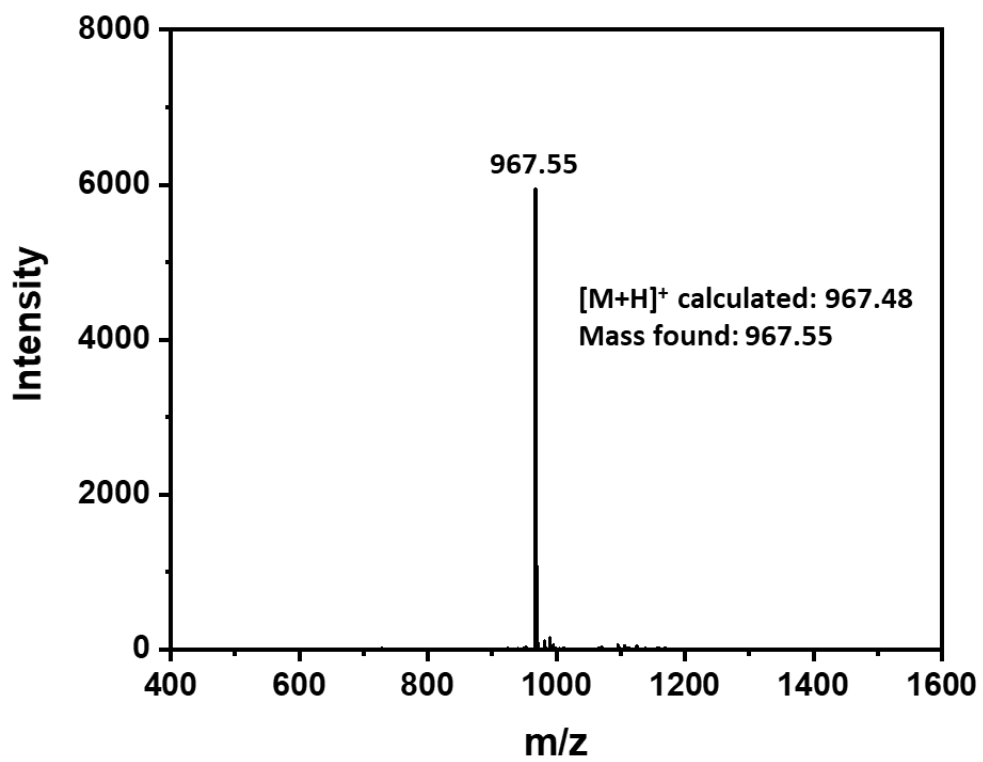


Fig. S2. MALDI-TOF mass spectrum of cy(WQETR).