

Supporting Information

A cationic fluorescent probe for the highly selective detection of sodium dodecyl sulfate (SDS) by electrostatic and hydrophobic self-assembly

Hongrui Chen^a, Xinyue Mu^a, Jian Li^a, Yuqi Qin^a, Liqiang Yan^{a*}

^a College of Chemistry and Bioengineering, Guilin University of Technology, Guilin, Guangxi 541006, P.R. China

*Corresponding author, E-mail: liqiangyan@glut.edu.cn

Table of contents

Fig. S1. ¹ H NMR spectrum of the probe.	1
Fig. S2. ¹³ C NMR spectrum of the probe.	1
Fig. S3. HRMS of probe in CH ₃ CN.	2
Fig. S4. Fluorescence intensity of the probe (50 μM) with different analytes (2 mM) in the presence of SDS (50 μM). 1. probe only; 2. Ca ²⁺ ; 3. Mg ²⁺ ; 4. HCO ₃ ²⁻ ; 5. SDS.	2
Fig. S5. The fluorescence intensity change of the probe with time before and after adding SDS.	2
Fig. S6. The fluorescence intensities of the probe with and without SDS under different pH conditions.	3
Fig. S7. The fluorescence intensities of the probe with and without SDS in CH ₃ CN containing different amounts of water.	3
Fig. S8. ¹ H spectra of probe with and without SDS in DMSO- <i>d</i> ₆	4

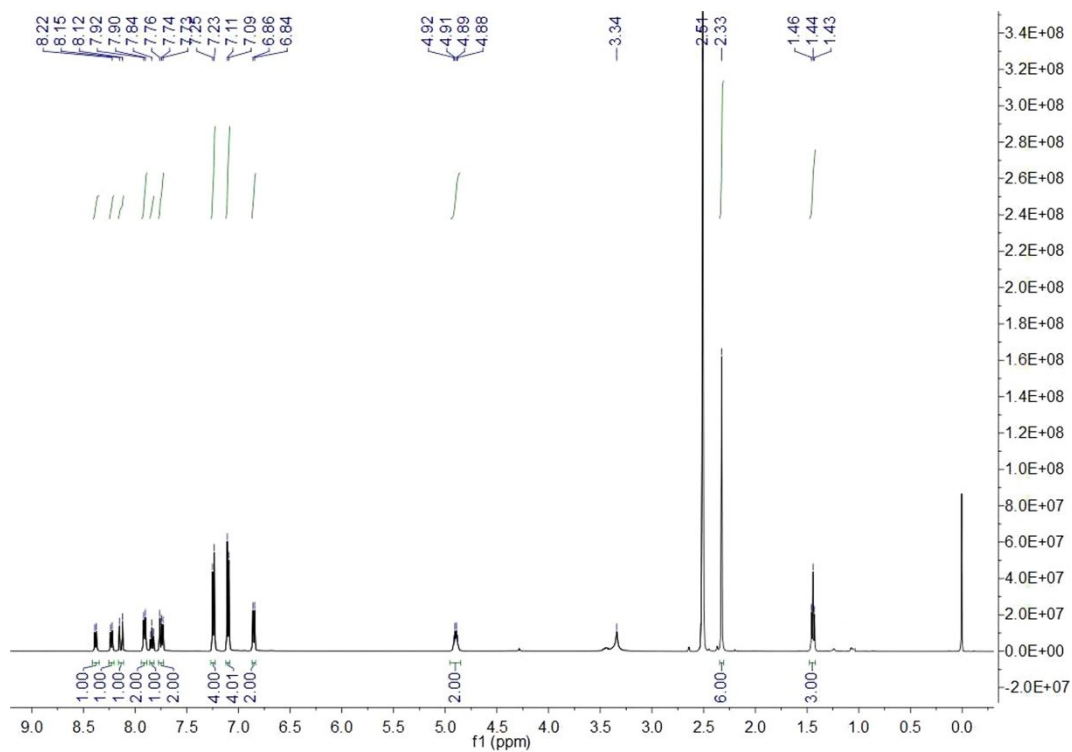


Fig. S1. ^1H NMR spectrum of the probe.

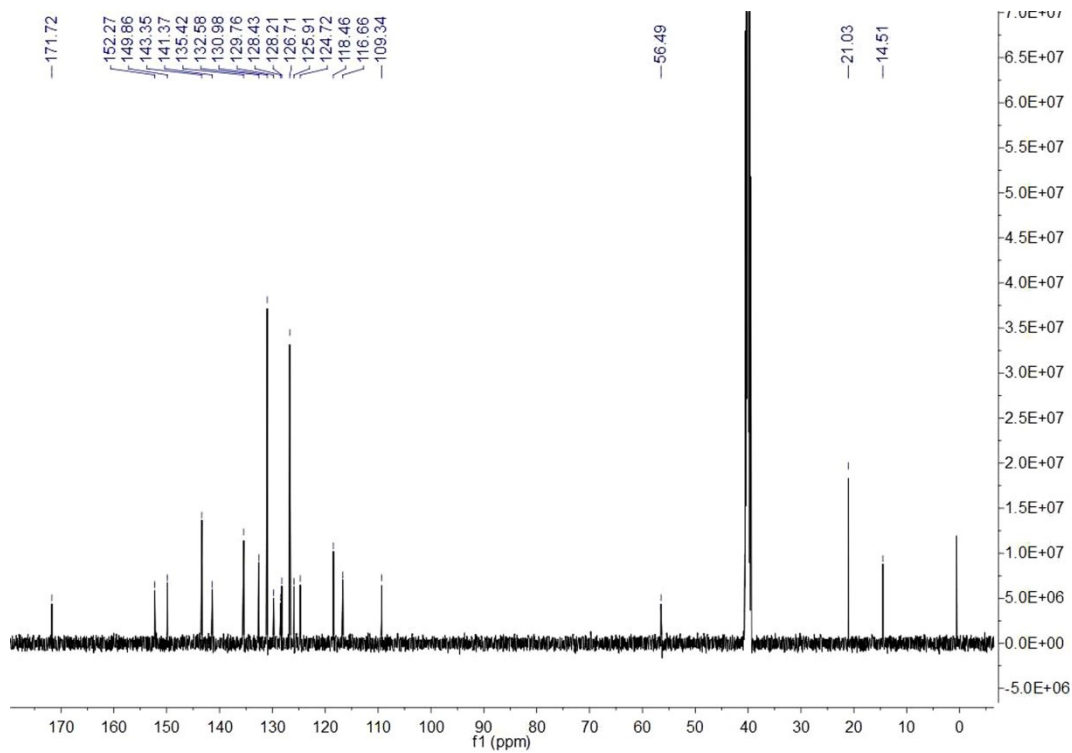


Fig. S2. ^{13}C NMR spectrum of the probe.

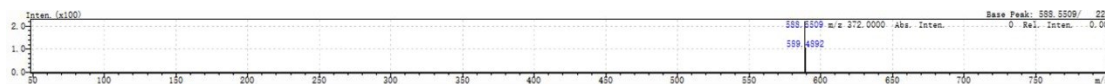


Fig. S3. HRMS of probe in CH₃CN.

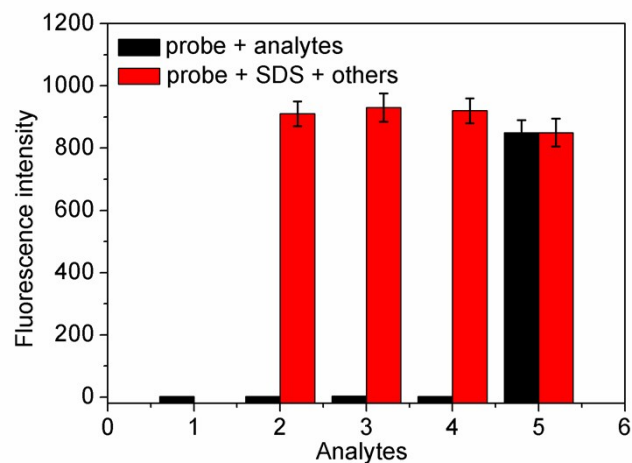


Fig. S4. Fluorescence intensity of the probe (50 μM) with different analytes (2 mM) in the presence of SDS (50 μM). 1. probe only; 2. Ca²⁺; 3. Mg²⁺; 4. HCO₃²⁻; 5. SDS.

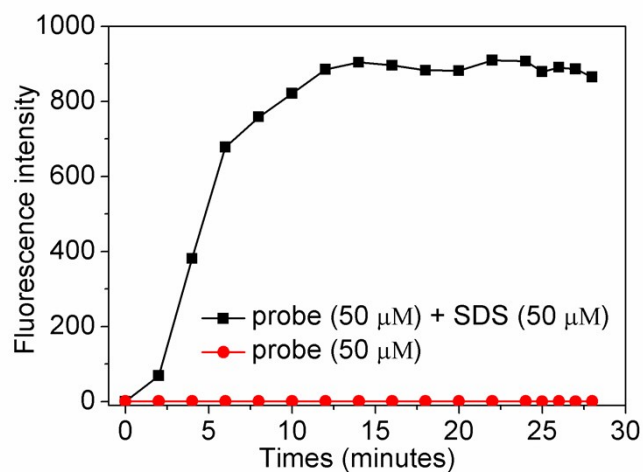


Fig. S5. The fluorescence intensity change of the probe with time before and after adding SDS.

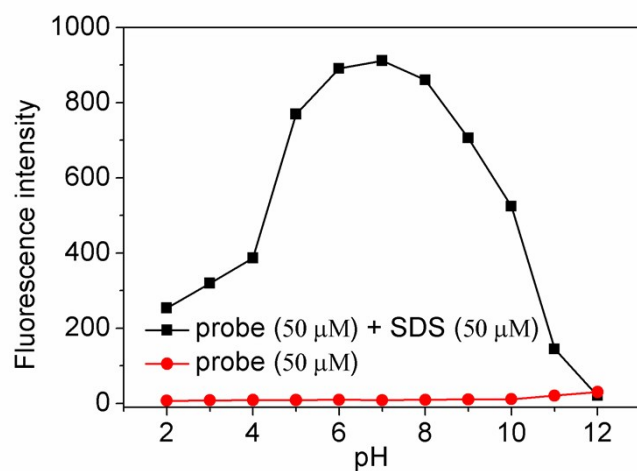


Fig. S6. The fluorescence intensities of the probe with and without SDS under different pH conditions.

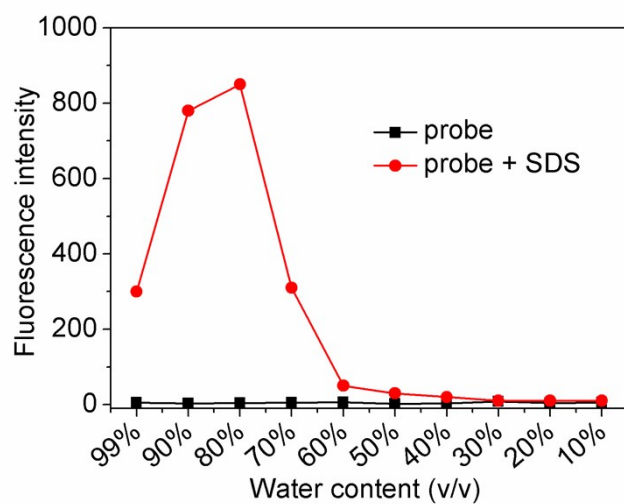


Fig. S7. The fluorescence intensities of the probe with and without SDS in CH₃CN containing different amounts of water.

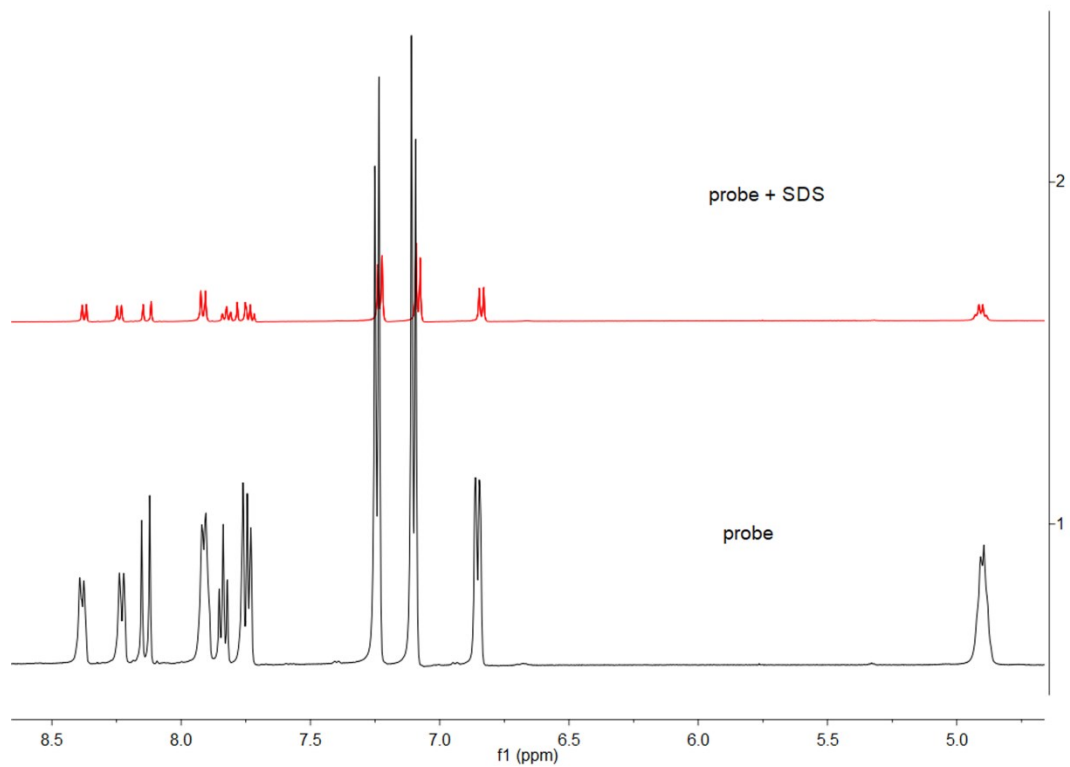


Fig. S8. ¹H spectra of probe with and without SDS in DMSO-*d*₆.