

1 **Electronic Supplementary**

2

3

**Implementation of conductivity cell electrode
as ion chromatographic detector**

4

5

6 Daisuke Kozaki,*^a Souma Tanihata,^b Yuki Sago,^c Taku Fujiwara,^d Masanobu Mori,^a Atushi
7 Yamamoto^b

8

9 ^a Department of Chemistry and Biotechnology, Graduate School of Science and Technology, Kochi
10 University, 2-5-1 Akebono-cho, Kochi City, Kochi 780-8520, Japan. E-mail: daisuke.2-10@kochi-
11 u.ac.jp.

12 ^b Department of Food & Nutritional Sciences, College of Bioscience and Biotechnology, Chubu
13 University, 1200 Matsumoto-cho, Kasugai, Aichi 487-8501, Japan.

14 ^c Graduate School of Sciences and Technology for Innovation, Yamaguchi University, Yoshida 1677-
15 1 Yamaguchi, 753-8515, Japan.

16 ^d Department of Environmental Engineering, Kyoto University, C1-222, Nishikyo-ku, Kyoto, 615-
17 8540, Japan.

18

19 Table S1 Specification of conductivity cell electrode.

Specifications	
Product name	3574-10C Conductivity Cell (Flow Type)
Manufacturing Company	HORIBA Advanced Techno Co., Ltd.
Cell Constant (cm ⁻¹)	10
Measurement Range	10 μS/cm to 100mS/cm
Sample Volume Required (mL)	0.25
Temperature Sensor	---
Temperature Range (°C)	0 to 80
Cable Length (m)	1.0
Cell Material	Platinum coated with platinum black, glass body

20

21

22

23 Table S2 Analytical results of natural mineral water by using CCE and CD. ¹³

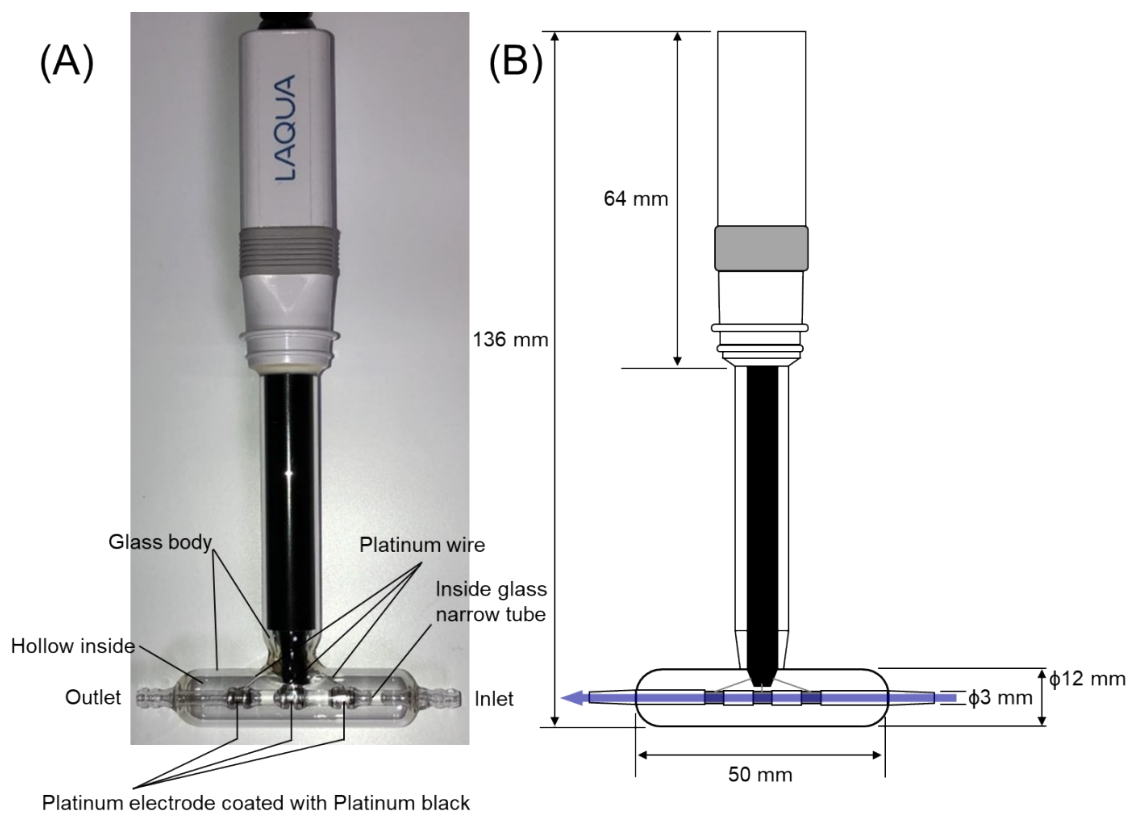
Natural mineral water	Type of detection equipment	Ion concentraton (mM)							
		SO ₄ ²⁻	Cl ⁻	NO ₃ ⁻	Na ⁺	NH ₄ ⁺	K ⁺	Mg ²⁺	Ca ²⁺
Sample 1	CCE	0.142	0.307	0.0523	0.283	—*	0.0218	1.10	2.29
	CD	0.141	0.306	0.0634	0.247	—*	0.0257	1.08	2.20
Sample 2	CCE	0.118	0.162	0.0491	0.527	—*	—**	0.0945	0.226
	CD	0.116	0.148	0.0517	0.482	—*	—**	0.109	0.228
Sample 3	CCE	0.0255	0.164	0.0596	0.272	—*	0.0847	0.107	0.154
	CD	0.0245	0.165	0.0623	0.253	—*	0.0788	0.100	0.156

24

25 *Under the detection limit of NH₄⁺ (33.1 μM), **Under the detection limit of K⁺ (42.5 μM)

26

27



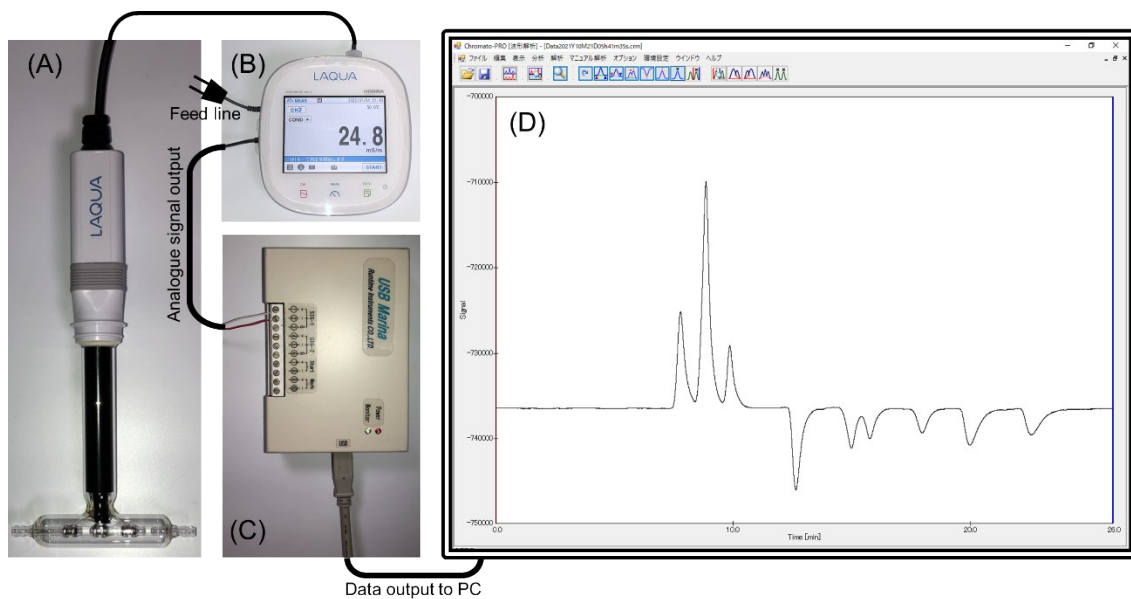
28

29 Fig. S1 (A) Detail structure and (B) dimensions of the conductivity cell electrode.

30

31

32



33

34 Fig. S2 Data transfer from the conductivity cell electrode to the chromatography workstation.

35 (A) Conductivity cell electrode (LAQUA 3574-10C, Horiba Ltd., Kyoto, Japan), (B) conductivity cell

36 electrode monitor (COND METER DS-72, Horiba Ltd., Kyoto, Japan), (C) analogue signal receiver

37 (USB Marina, Runtime Instruments, Co. Ltd., Tokyo, Japan), and (D) chromatography workstation

38 (Chromato-PRO, Runtime Instruments, Co. Ltd., Tokyo, Japan).

39

40