

Supporting Information

Growing CdS flag from a wire through in situ controlling the catalyst

Beibei Dai, Chao Fan, Xing Xu, Zhuodong Qi, Qin Xiao, Jinhui Wei, Sha Jiang, Qinglin Zhang*

School of Physics and Electronics, Hunan University, Changsha, 410082

E-mail: qinglin.zhang@hnu.edu.cn

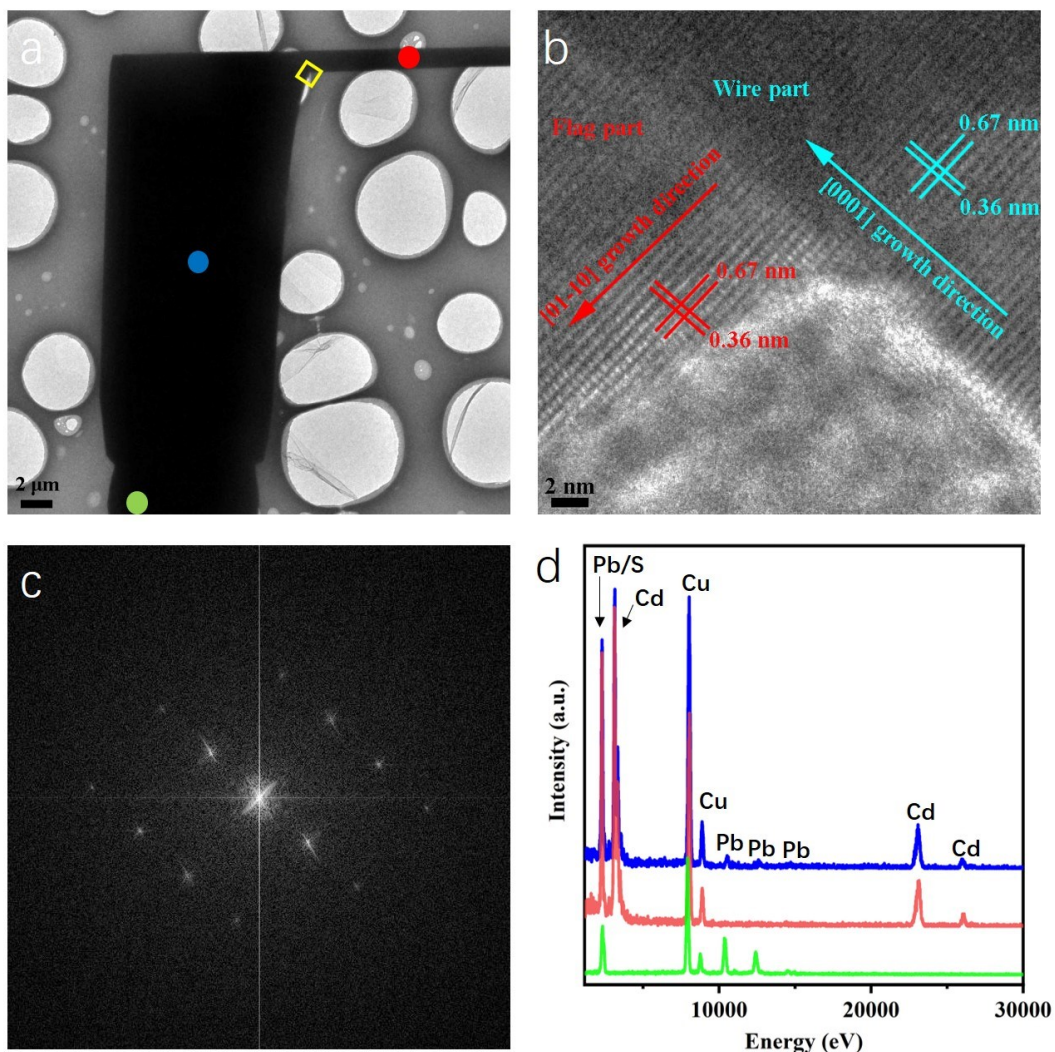


Figure S1. a) Low-magnification TEM image of a CdS flag. b) The HRTEM image for the interface area between the wire and the flag, taken from the yellow rectangular region in (a). c) The corresponding FFT image taken from the area in (b). d) EDS detected from the marked dots in (a).

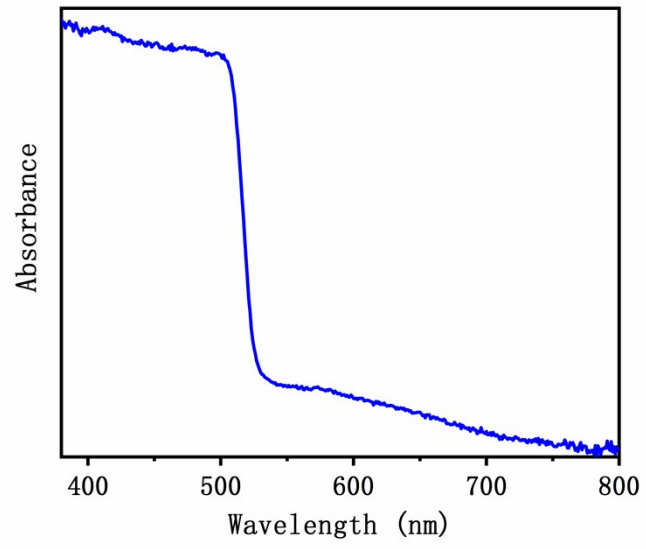


Figure S2. The absorption spectrum of CdS flags