

## LDH-derived phosphide/N-doped graphene oxide hierarchical electrocatalyst for enhanced oxygen evolution reaction

Mengya Yang,<sup>a</sup> Rong Zhao,<sup>a</sup> Yi Liu<sup>\*,a</sup> and Hua Lin,<sup>\*,b</sup>

---

<sup>a</sup>*Institute for Composites Science Innovation (InCSI), School of Materials Science and Engineering, Zhejiang University, Hangzhou 310027, China*

<sup>b</sup>*State Key Laboratory of Structural Chemistry, Fujian Institute of Research on the Structure of Matter, Chinese Academy of Sciences, Fuzhou 350002, China*

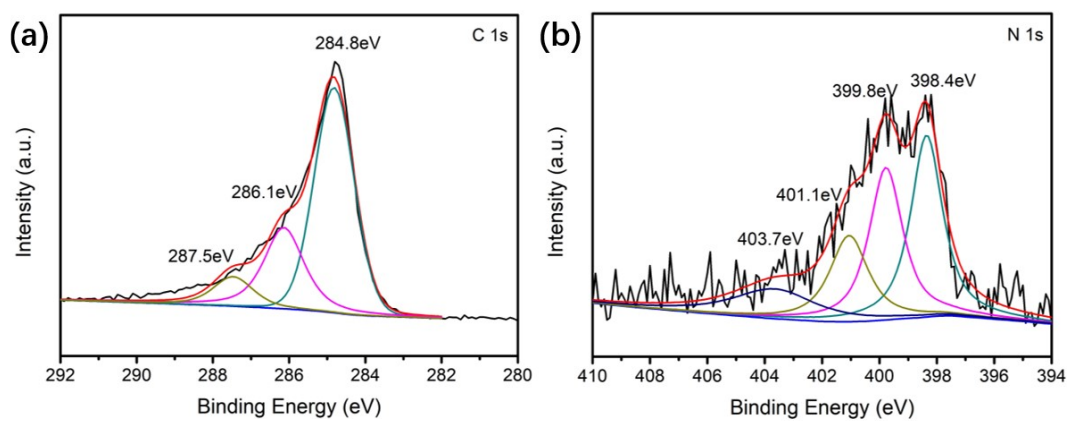
\*E-mail: liuyimse@zju.edu.cn and linhua@fjirsm.ac.cn.

### Electronic Supplementary Information Index

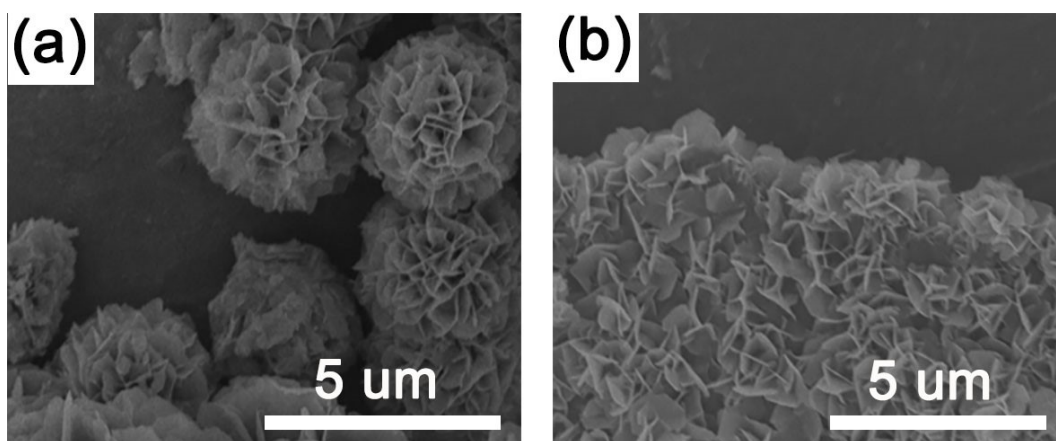
**Fig. S1** (a) High-resolution C1s spectra of as-synthesized N-GO, (b) High-resolution N1s spectra of as-synthesized N-GO.

**Fig. S2** (a) SEM image of Fe-Ni<sub>2</sub>P, (b) SEM image of Fe-Ni<sub>2</sub>P/GO.

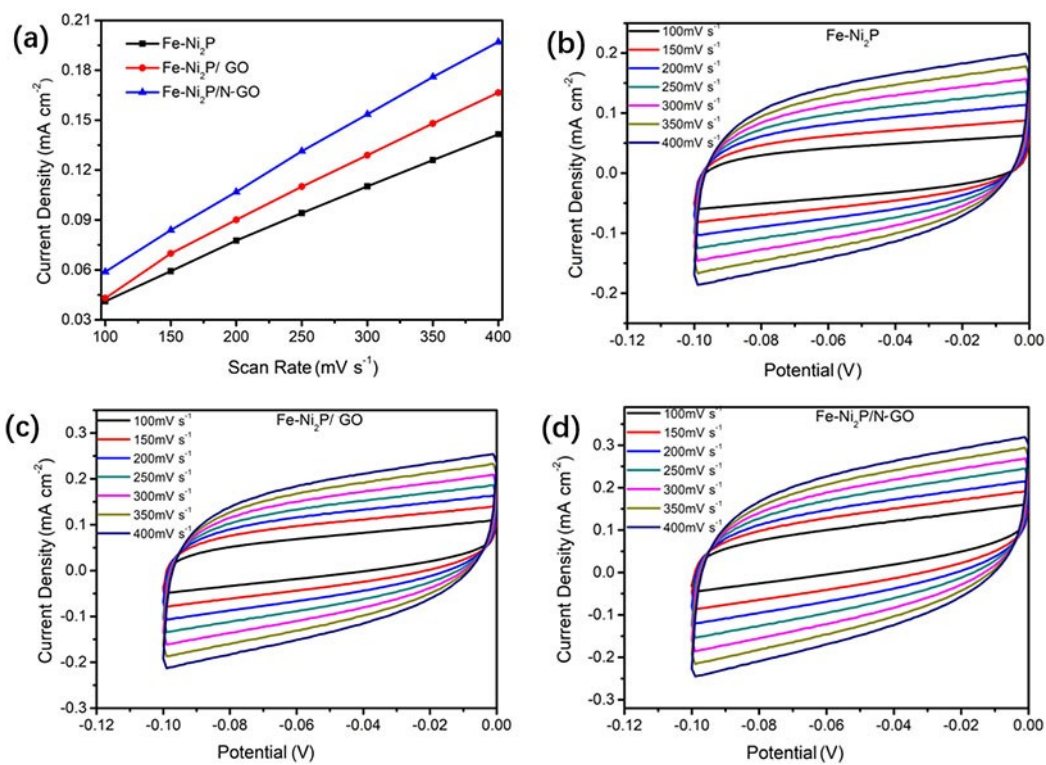
**Fig. S3** (a) The capacitive current as a function of scan rates, (b-d) CV curves of Fe-Ni<sub>2</sub>P, Fe-Ni<sub>2</sub>P/GO and Fe-Ni<sub>2</sub>P/N-GO samples obtained with different scanning rates at -0.12 ~ 0 V.



**Fig. S1** (a) High-resolution C1s spectra of as-synthesized N-GO, (b) High-resolution N1s spectra of as-synthesized N-GO.



**Fig. S2** (a) SEM image of Fe-Ni<sub>2</sub>P, (b) SEM image of Fe-Ni<sub>2</sub>P/GO.



**Fig. S3** (a) The capacitive current as a function of scan rates, (b-d) CV curves of Fe-Ni<sub>2</sub>P, Fe-Ni<sub>2</sub>P/GO and Fe-Ni<sub>2</sub>P/N-GO samples obtained with different scanning rates at -0.12 ~ 0 V.