

Supplementary material:

Microscopic origin of graphene nanosheets derived from coal-tar pitch by
treating Al_4C_3 as the intermediate

Peng Lin¹, Yinggan Zhang², Xiaolin Tan¹, Rui Xiong¹, Baisheng Sa^{1,*} and Qilang
Lin^{1,**}

¹ *Key Laboratory of Eco-materials Advanced Technology, College of Materials
Science and Engineering, Fuzhou University, Fuzhou 350108, P. R. China*

² *College of Materials, Fujian Provincial Key Laboratory of Theoretical and
Computational Chemistry, Xiamen University, Xiamen 361005, P. R. China*

Corresponding authors: bssa@fzu.edu.cn (B. Sa); linqilang@fzu.edu.cn (Q. Lin).

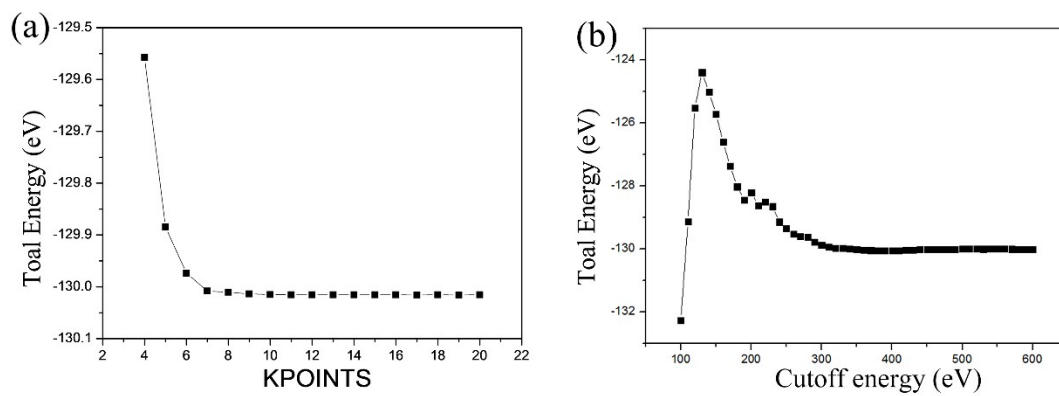


Figure S1. (a) The KPOINTS mesh and (b) cutoff energy convergence test results

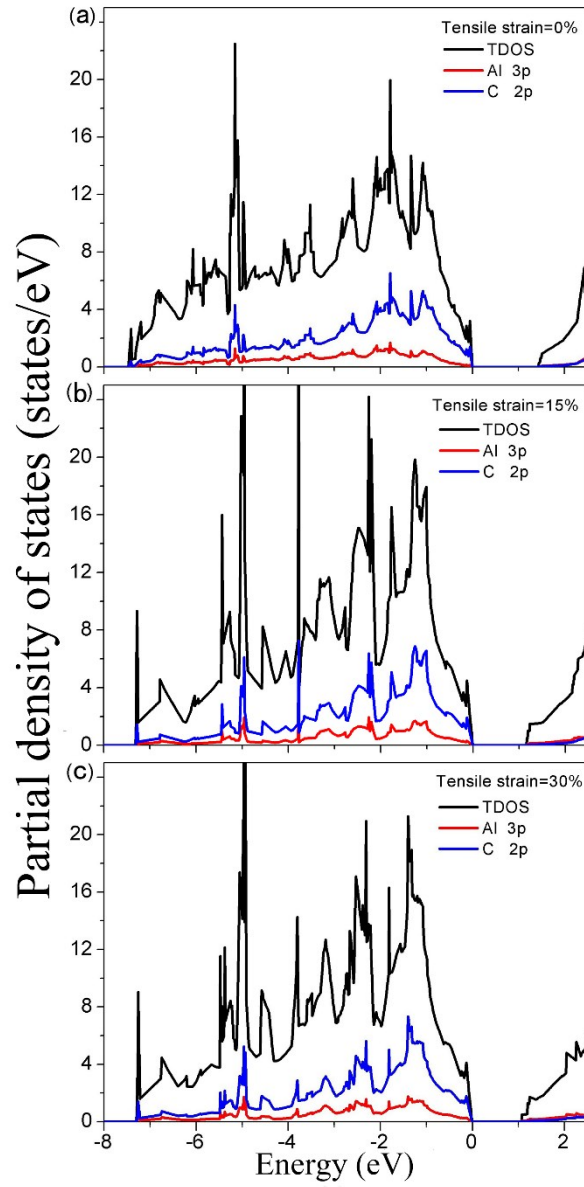


Figure S2. The calculated total and partial density of states of Al_4C_3 under (a) 0%, (b) 15% and (c) 30% tensile strain along $[0001]$ direction by DFT-D3 approach.

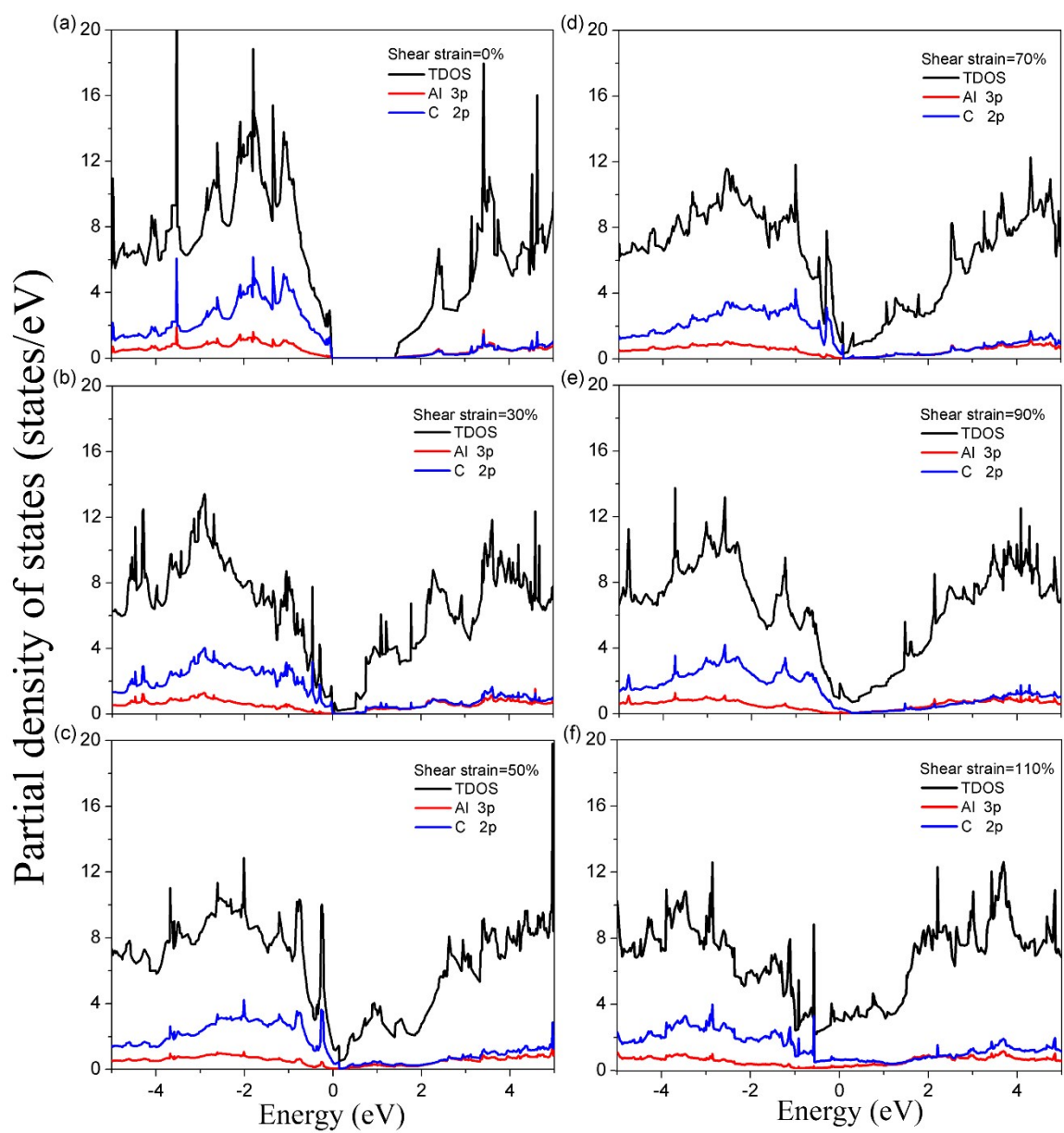


Figure S3. The calculated total and partial density of states of Al_4C_3 under (a) 0%, (b) 30%, (c) 50%, (d) 70%, (e) 90% and (f) 110% shear strain along the (0001)[110] direction using DFT-D3 functional.