

**A novel ruthenium photosensitizer for Golgi apparatus *in vitro*
targeted photodynamic applications**

Supporting Information

Fengyi Zhao,^a Weifan Wang^a and Wenlong Wu^{*a}

^aInstitute of Botany, Jiangsu Province and Chinese Academy of Sciences, Nanjing 210014, Jiangsu, China.

Email: 1964wwl@163.com

Content:

- I. Fig. S1** Confocal fluorescence images of HeLa cells (without NBD tracker) incubated with Ru (10 μ M) and Ru-SL (10 μ M)
- II. Fig. S2** Confocal fluorescence images of HeLa cells after incubation with Ru-SL complex (10 μ M) for 2 h after white light irradiation at different time
- III. Fig. S3** Fluorescence spectra of adding Ru-SL complex
- IV. Fig. S4** Absorption spectra of Ru-SL complex
- V. Fig. S5** ¹H NMR (300 MHz, DMSO-d₆) spectrum of Ru-SL
- VI. Fig. S6** ¹³C NMR (101 MHz, DMSO-d₆) spectrum of Ru-SL
- VII. Fig. S7** Mass spectrometry (ESI) of Ru-SL

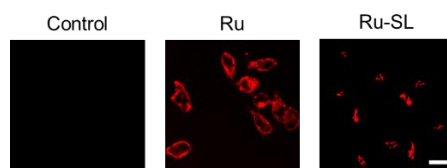


Fig. S1 Confocal fluorescence images of HeLa cells (without NBD tracker) incubated with Ru (10 μM) and Ru-SL (10 μM) at 37 $^{\circ}\text{C}$ for 2 h, without Ru or Ru-SL as a control, $\lambda_{\text{ex}} = 488 \text{ nm}$. Scale bar is 10 μm .

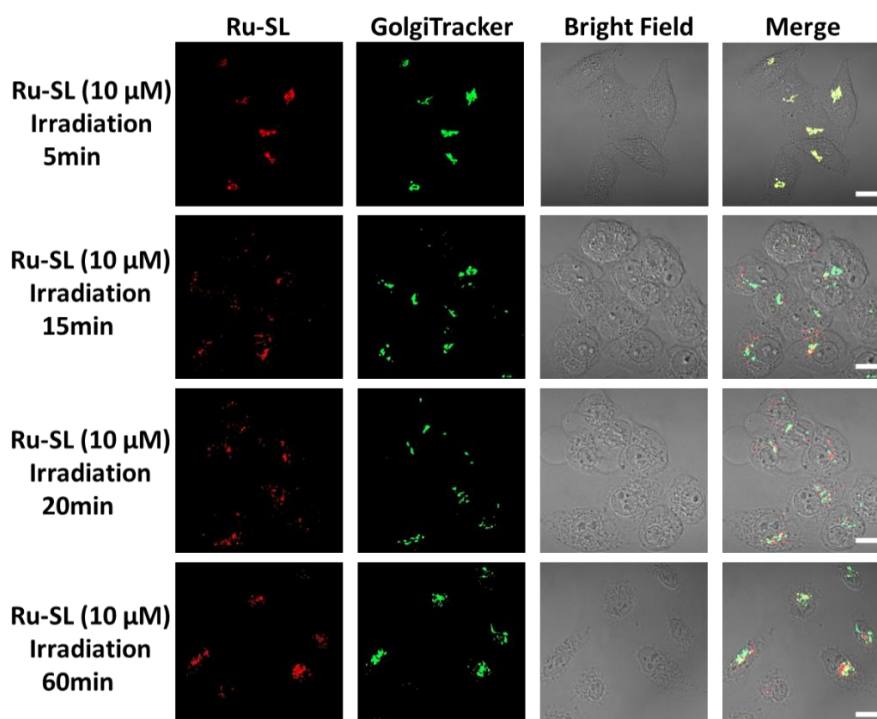


Fig. S2 Confocal fluorescence images of HeLa cells after incubation with Ru-SL complex (10 μM) for 2 h after white light irradiation at different time (5.67 mW/cm^2). $\lambda_{\text{ex}} = 488 \text{ nm}$. Scale bars = 5 μm .

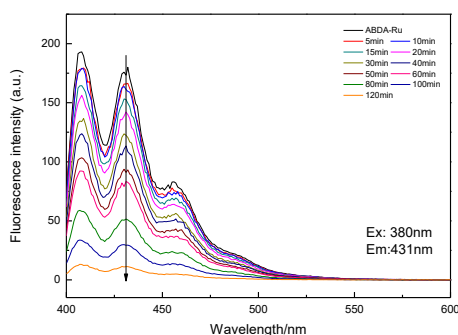


Fig. S3 Fluorescence spectra of adding Ru-SL complex (5 μM) into ABDA (30 μM , PBS, pH 7.2), $\lambda_{\text{ex}} = 380 \text{ nm}$.

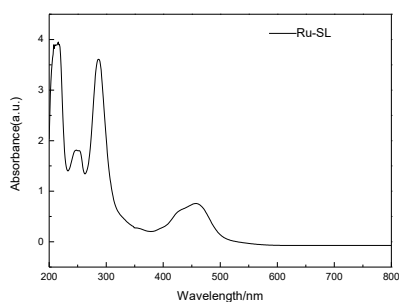


Fig. S4 Absorption spectra of Ru-SL complex (5 μ M, PBS, PH 7.2).

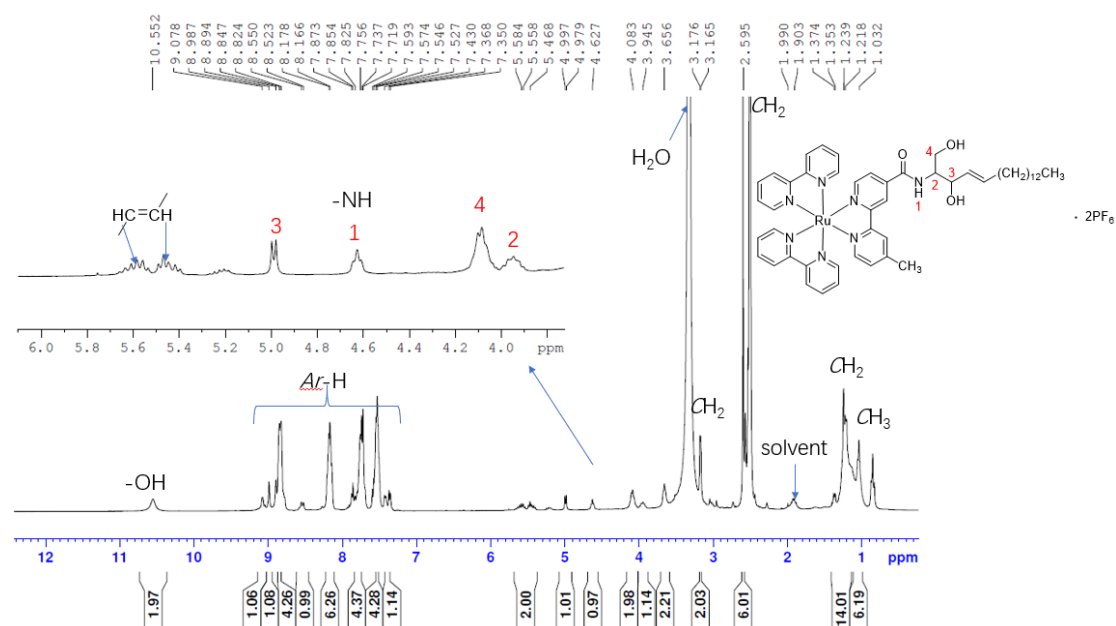


Fig. S5 ^1H NMR (300 MHz, DMSO- d_6) spectrum of Ru-SL.

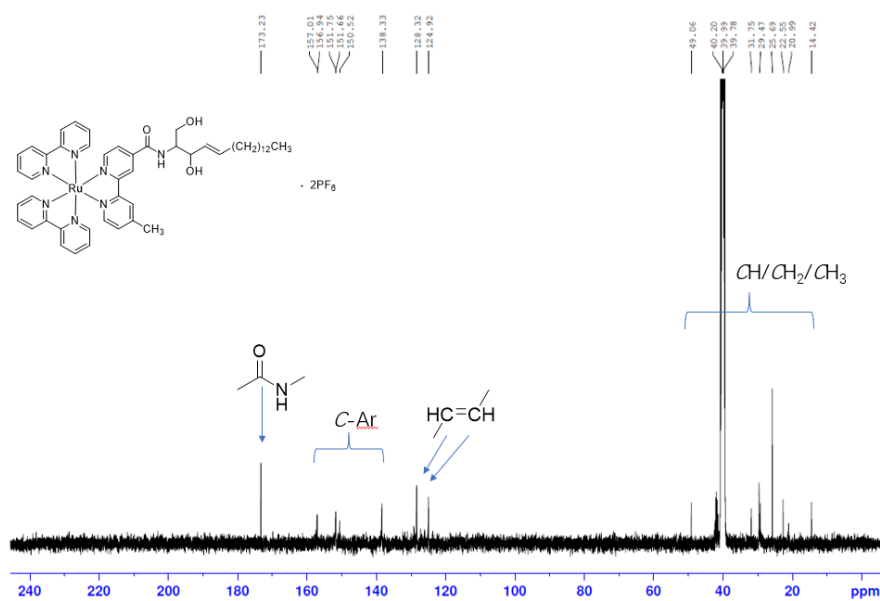


Fig. S6 ^{13}C NMR (101 MHz, DMSO- d_6) spectrum of Ru-SL.

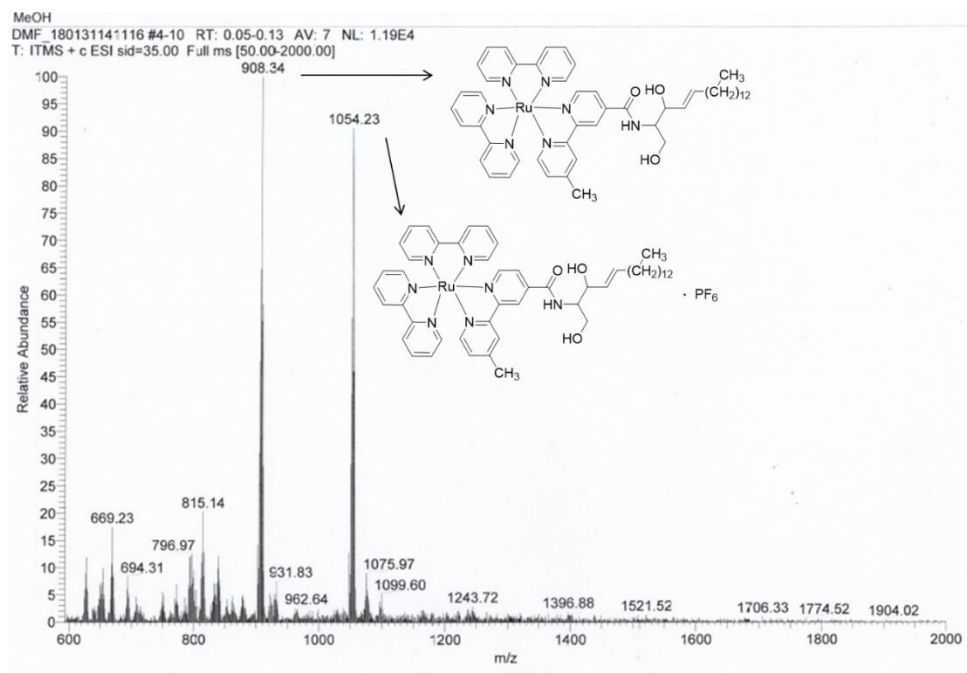


Fig. S7 Mass spectrometry (ESI) of Ru-SL.