

Supplementary data

Photo-initiated enhanced antibacterial therapy using a non-covalent functionalized graphene oxide nanoplatform

Lin Mei^{a*}, Yanmei Shi^b, Zhiqiang Miao^a, Fengyi Cao^a, Kai Hu^b, Chunlei Lin^a, Xiumin Li^c, Jing Li^d, and Jiagui Gao^a

^a School of Materials and Chemical Engineering, Zhongyuan University of Technology, Zhengzhou 450007, P.R. China

^b Academy of Chinese Medical Sciences, Henan University of Chinese Medicine, Zhengzhou 450001, P.R. China

^c Department of Microbiology and Immunology, New York Medical College, New York, NY 10595, USA

^d School of Foreign Languages, Zhongyuan University of Technology, Zhengzhou 450007, P.R. China

* Corresponding Author

Tel.: +86 371 62506163. E-mail: lins79@sina.com (Lin Mei)

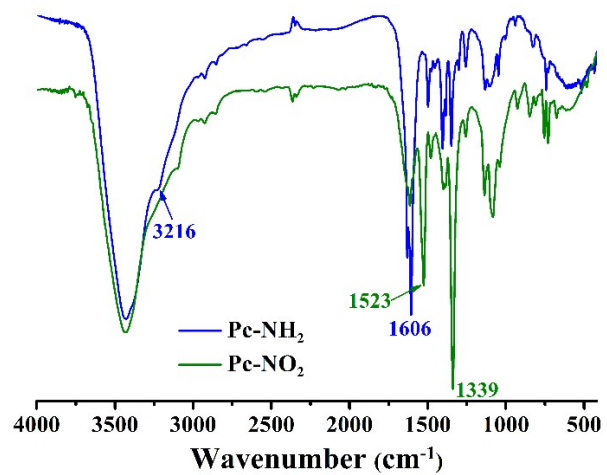


Figure S1. IR spectra of Pc-NO_2 and Pc-NH_2 .

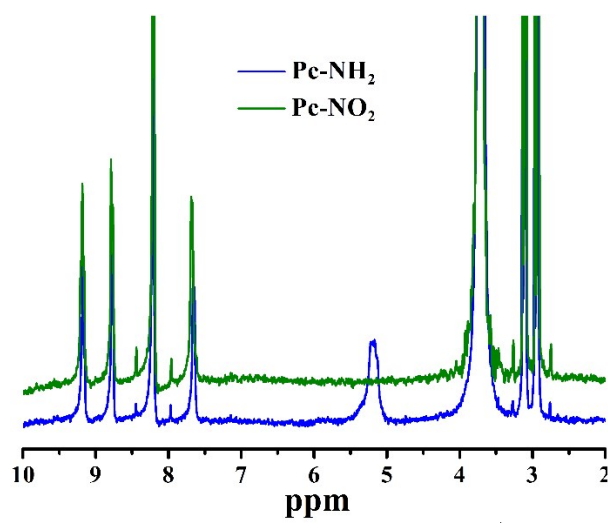


Figure S2. ^1H NMR (deuterated DMF solvent) spectra of Pc-NO_2 and Pc-NH_2 .

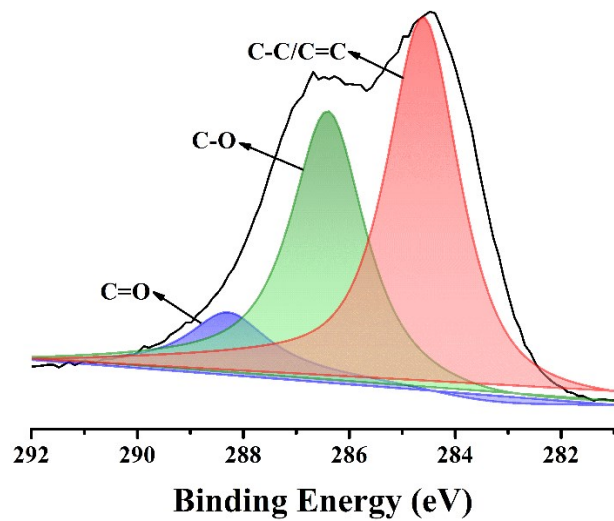


Figure S3. Curve fitting of the C1s spectrum of Pc-NH₂@GO.

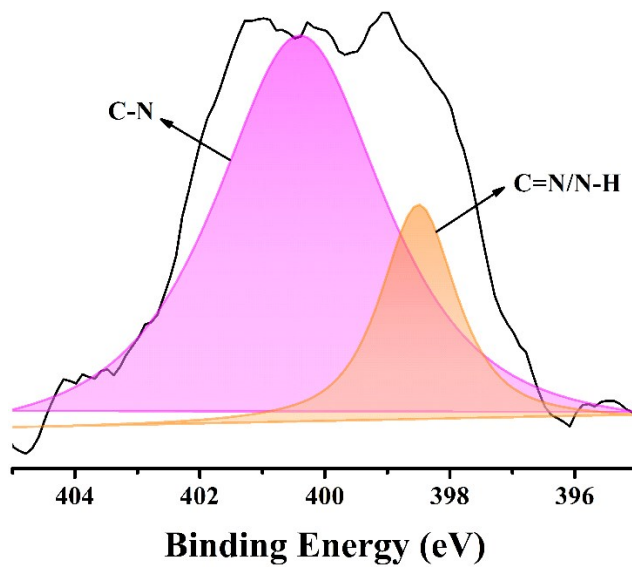


Figure S4. Curve fitting of the N1s spectrum of Pc-NH₂@GO.

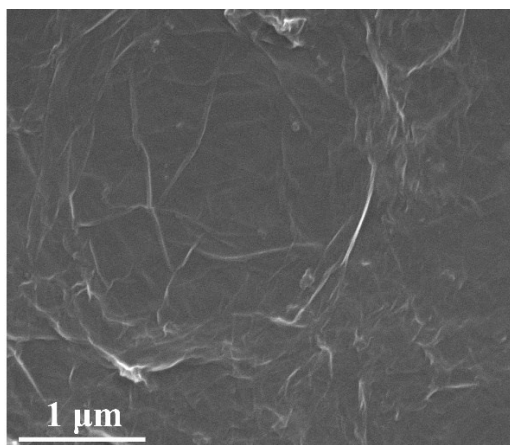


Figure S5. SEM image of GO.

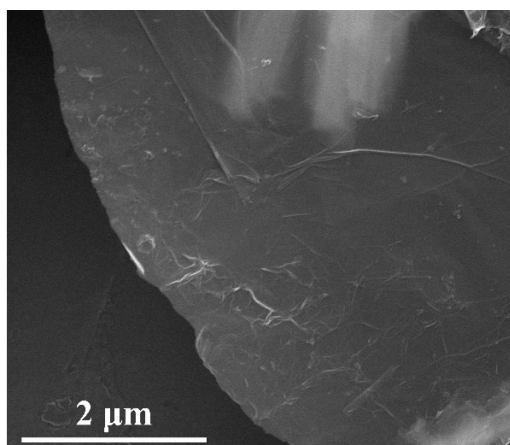


Figure S6. SEM image of Pc-NH₂@GO.

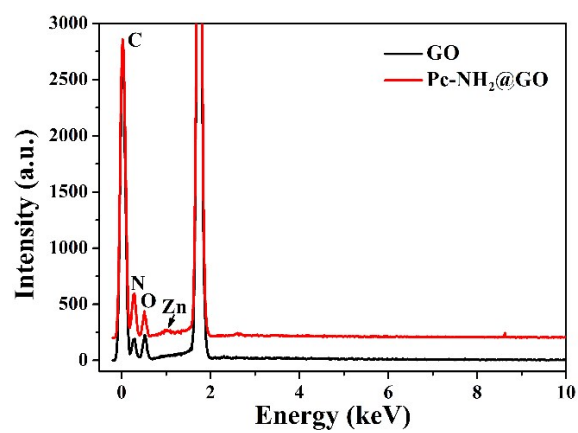


Figure S7. EDS analysis of GO and Pc-NH₂@GO.

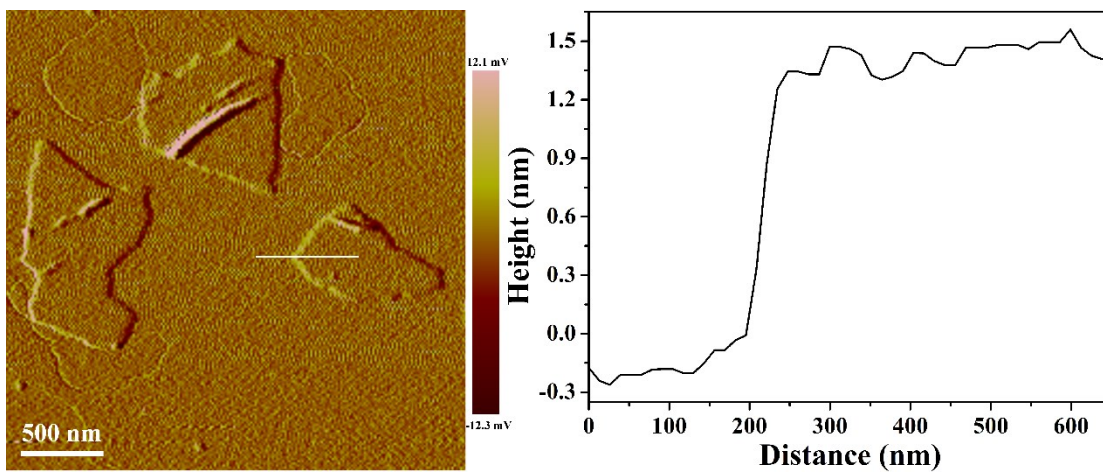


Figure S8. Representative AFM image of GO and its corresponding height profiles.

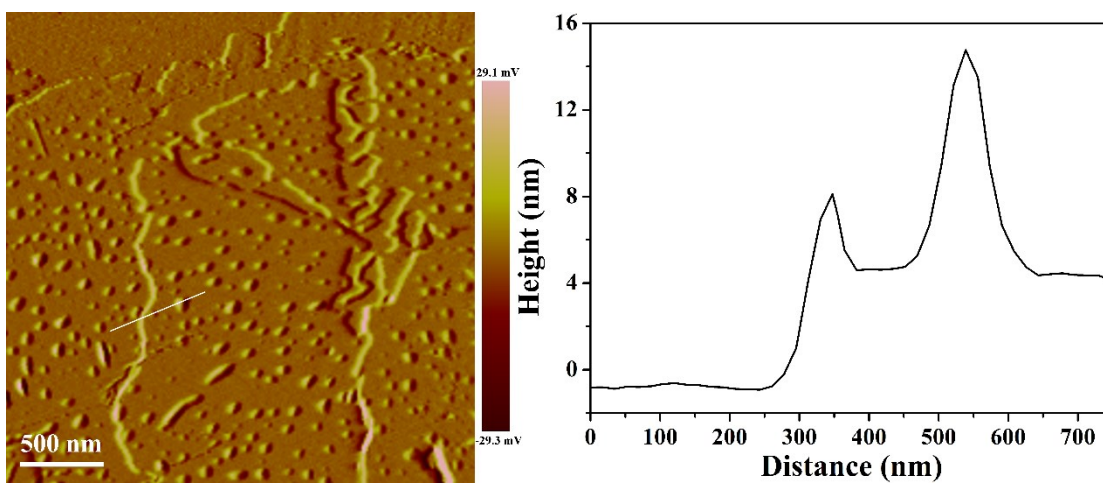


Figure S9. Representative AFM image of Pc-NH₂@GO and its corresponding height profiles.

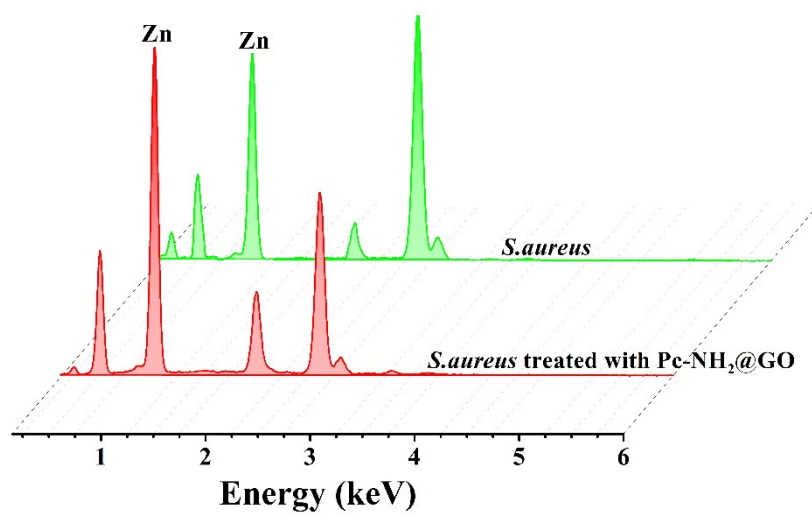


Figure S10. EDS analysis of *S. aureus* before and after treatment with Pc-NH₂@GO.