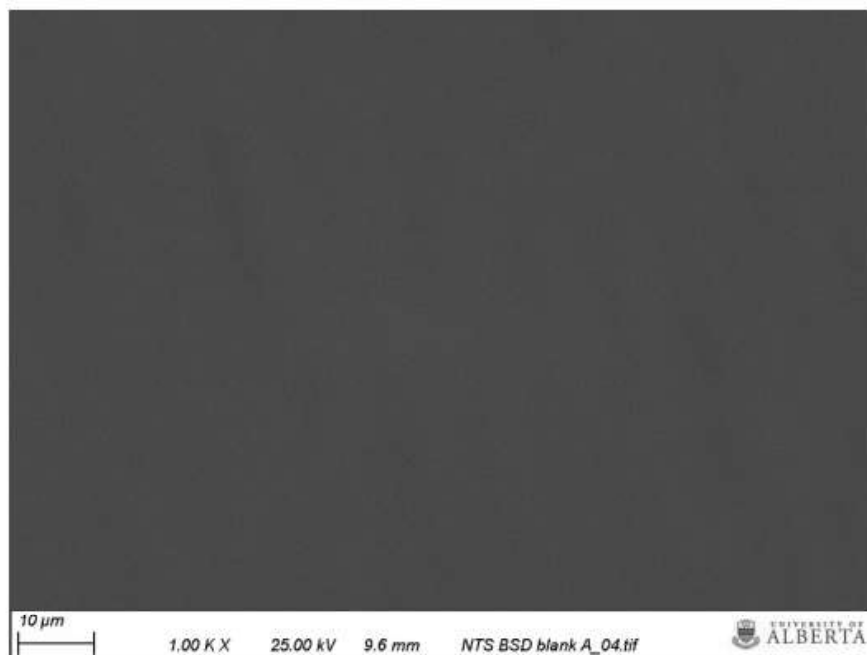
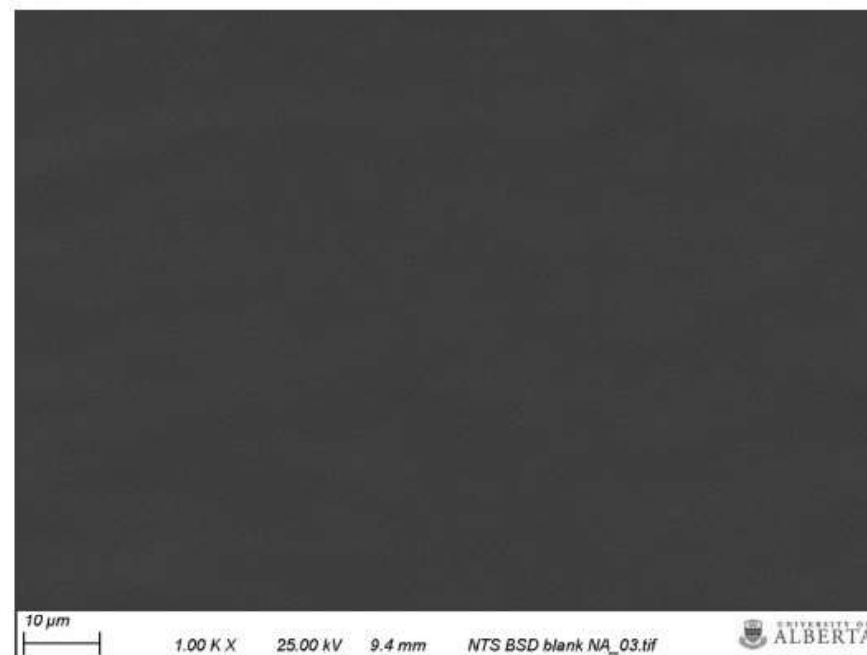


Blank PP bottle bottom

Blank PP bottle bottom
Acidified

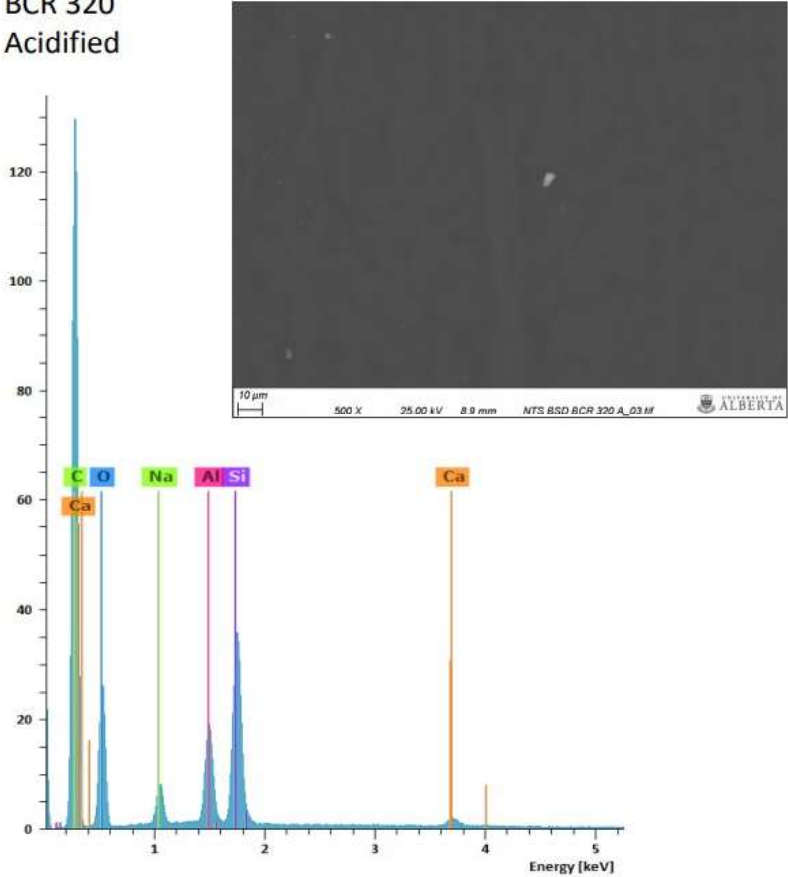


Blank PP bottle bottom
Un-acidified

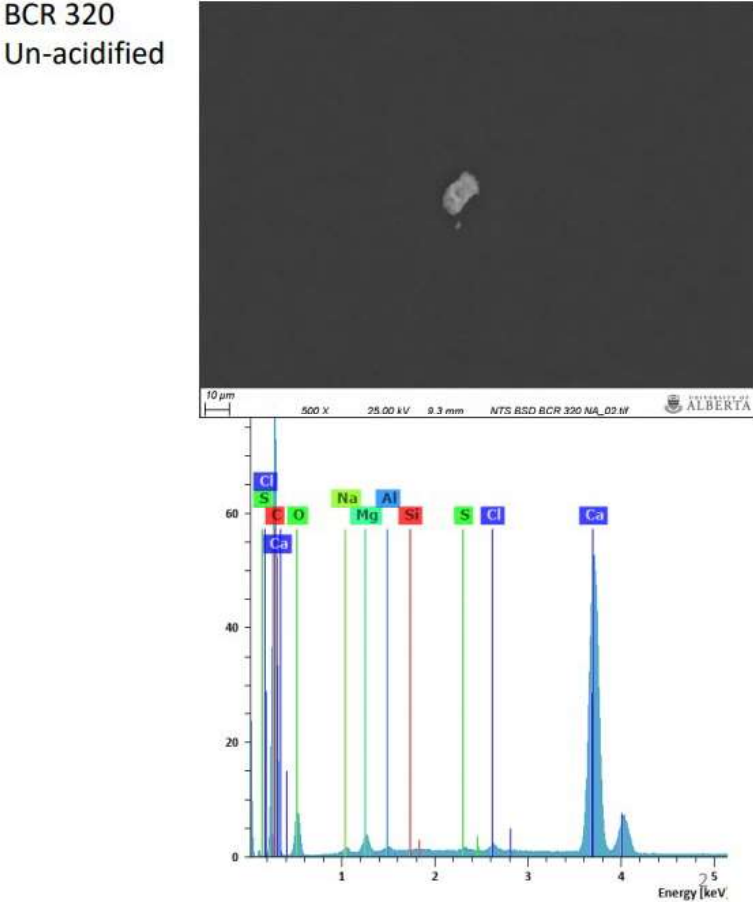


PP bottle bottom spiked with BCR 320

PP bottle bottom spiked with BCR 320
Acidified



PP bottle bottom spiked with BCR 320
Un-acidified



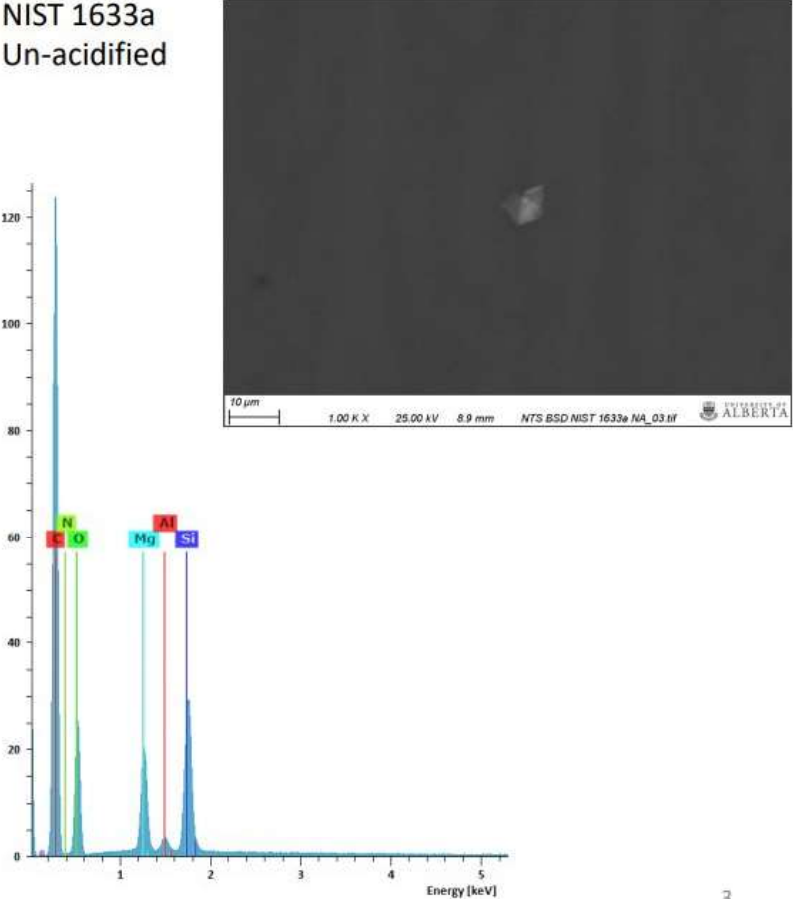
PP bottle bottom spiked with 1633a

PP bottle bottom spiked with
NIST 1633a
Acidified



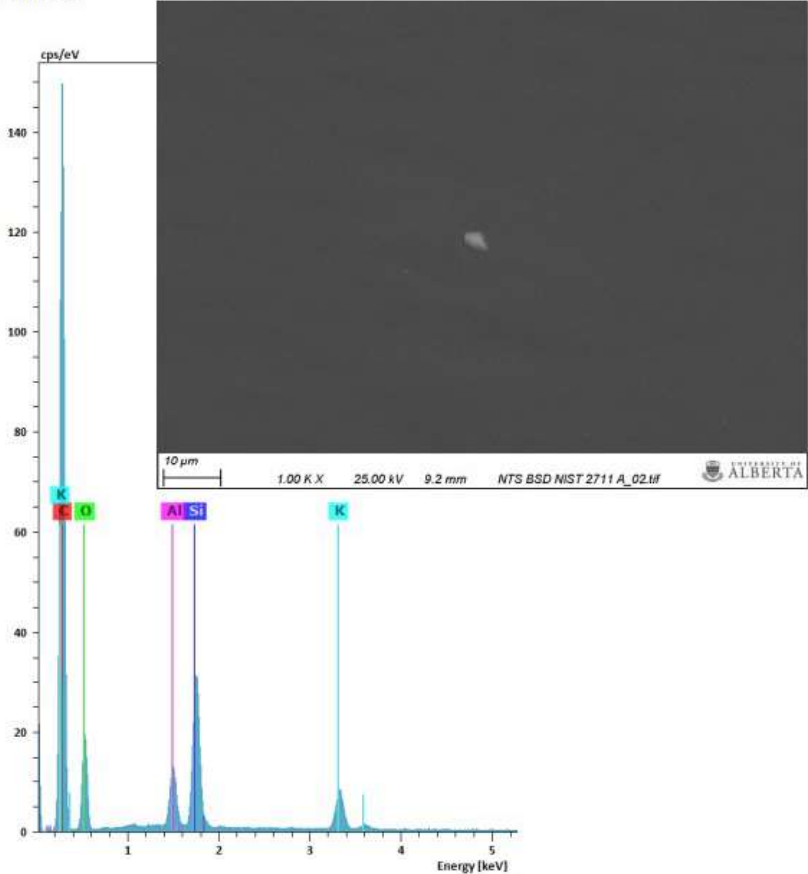
No visible particles
No EDX acquired

PP bottle bottom spiked with
NIST 1633a
Un-acidified

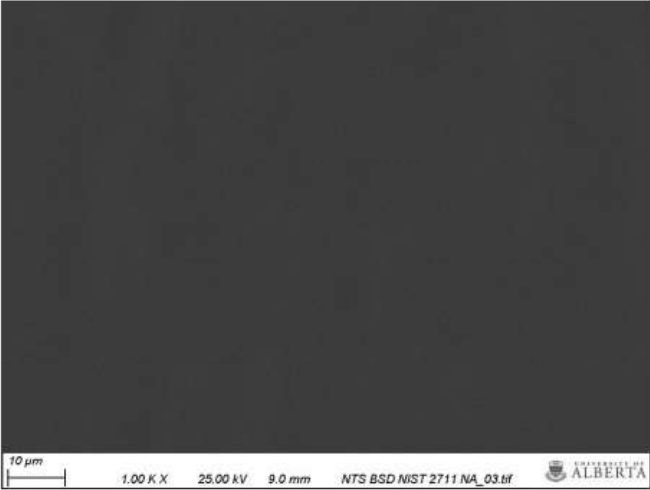


PP bottle bottom spiked with NIST 2711

PP bottle bottom spiked with
NIST 2711
Acidified



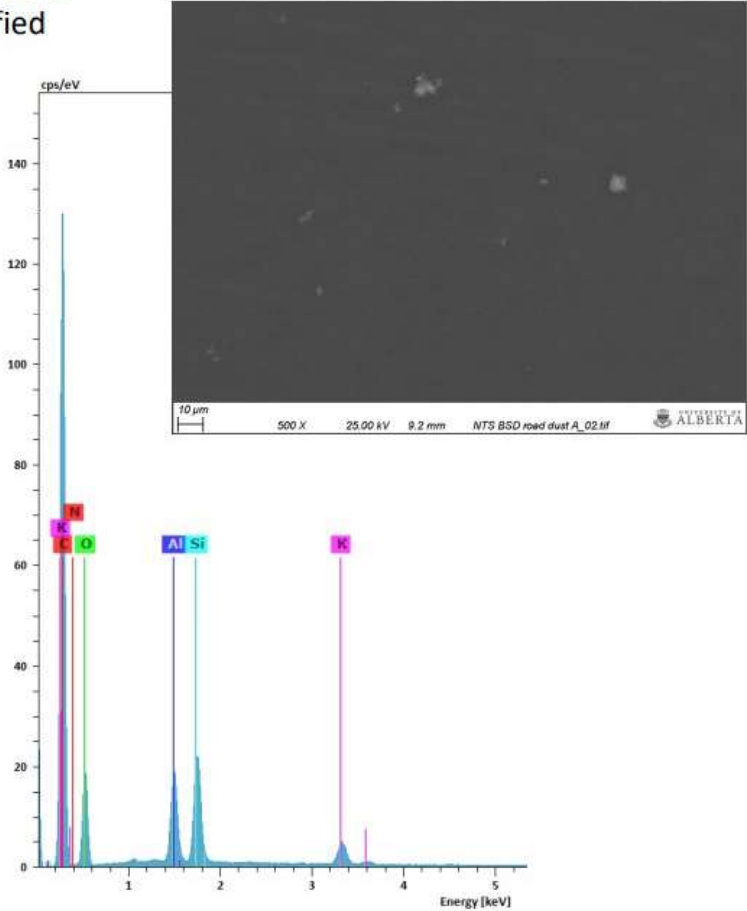
PP bottle bottom spiked with
NIST 2711
Un-acidified



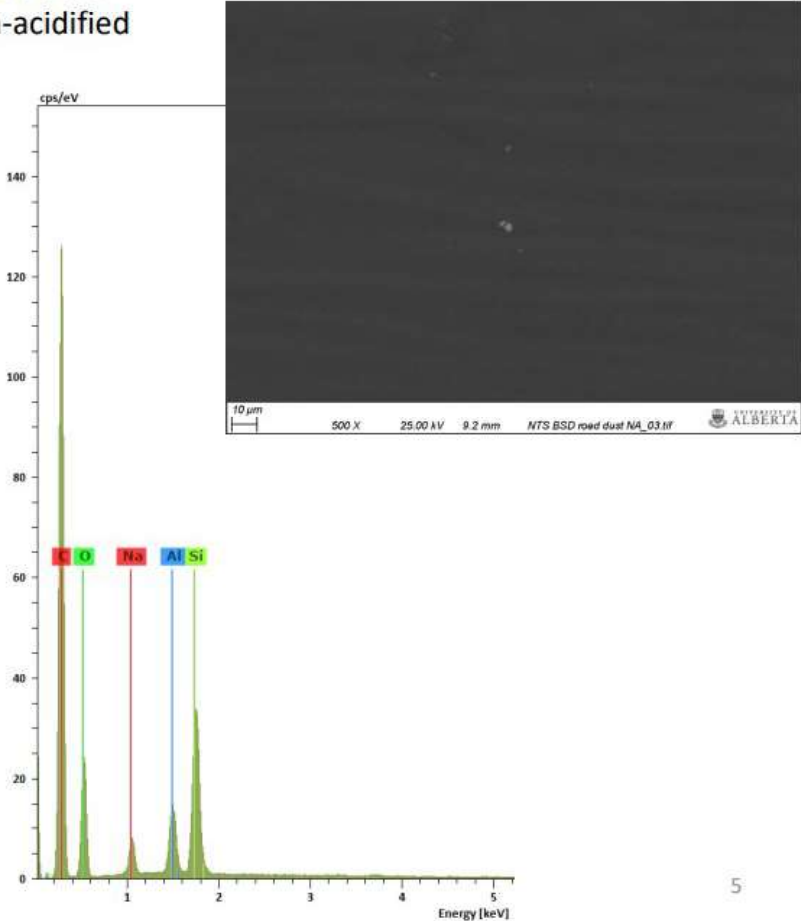
No visible particles
No EDX acquired

PP bottle bottom spiked with road dust

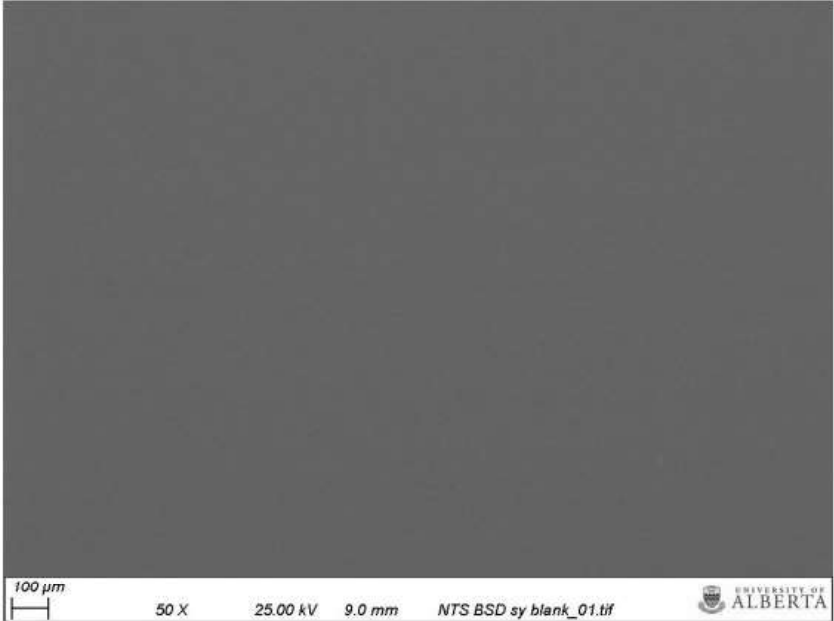
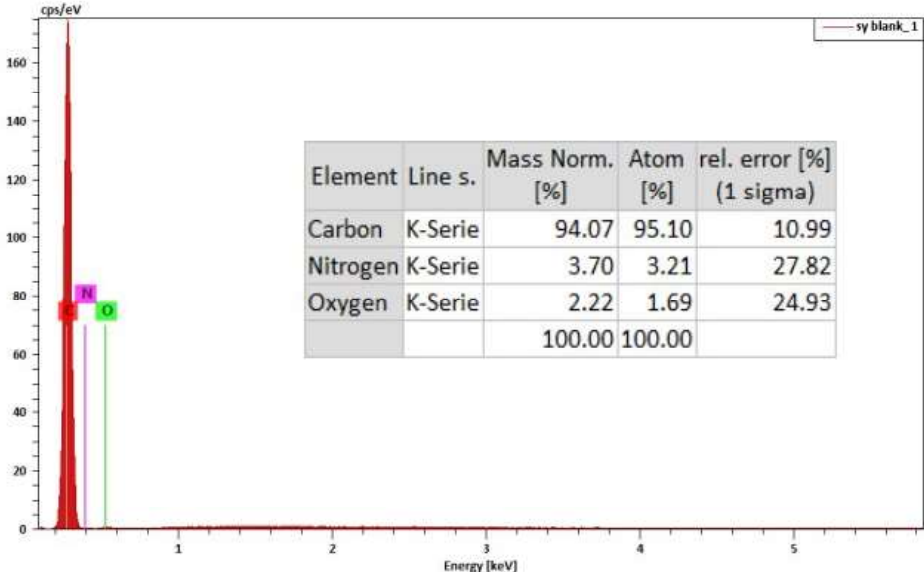
PP bottle bottom spiked with Road dust Acidified



PP bottle bottom spiked with Road dust Un-acidified

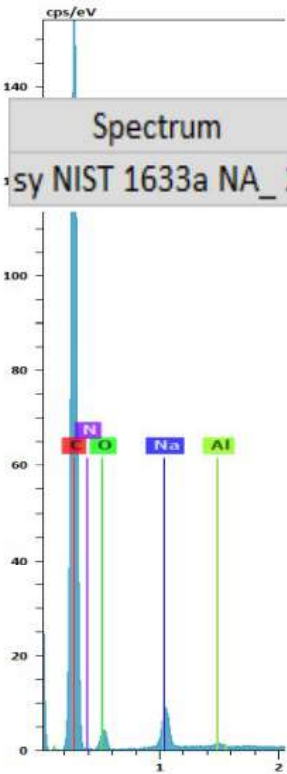


Syringe blank

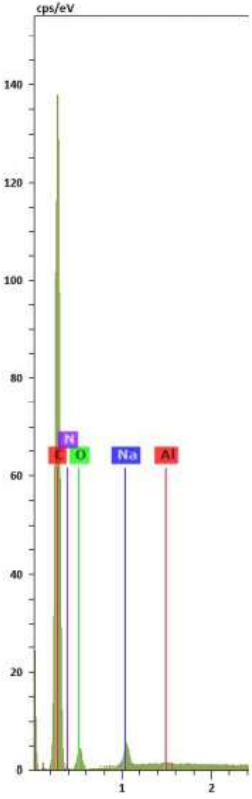


Syringe used for NIST 1633a (Unacidified)-1

Syringe used for snow sample spiked with NIST 1633a
Un acidified

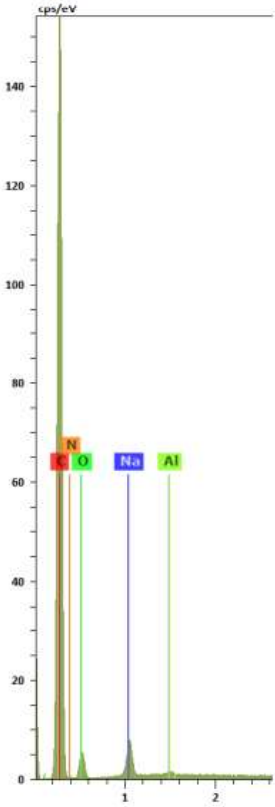
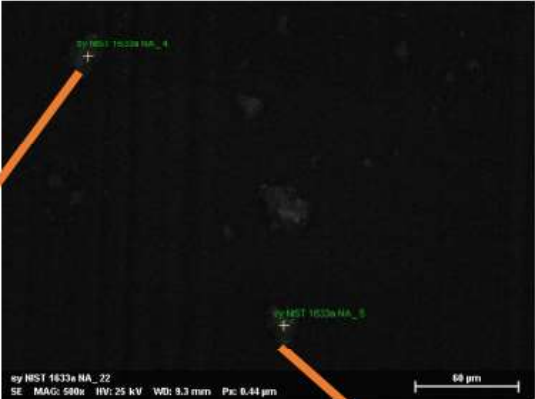
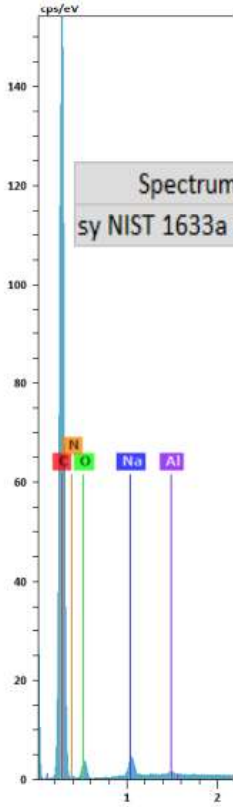


Spectrum	C	N	O	Na	Al
sy NIST 1633a NA_3	84.40	3.78	10.18	1.54	0.10



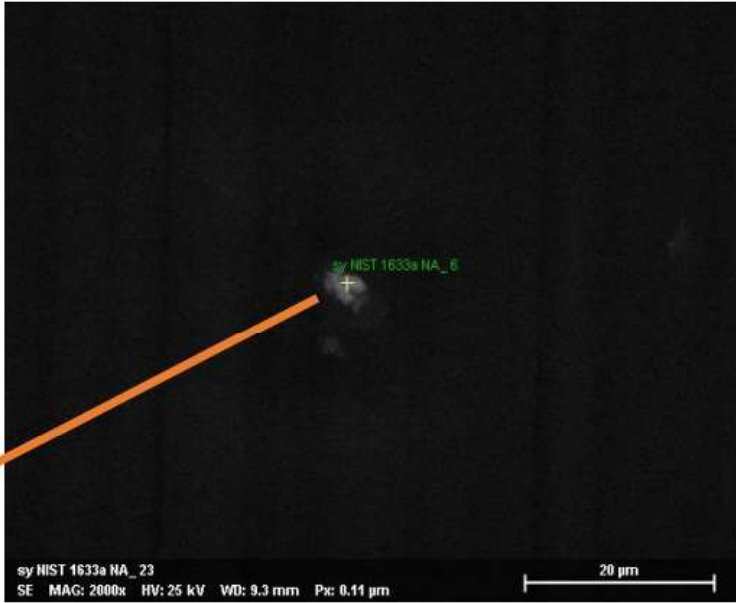
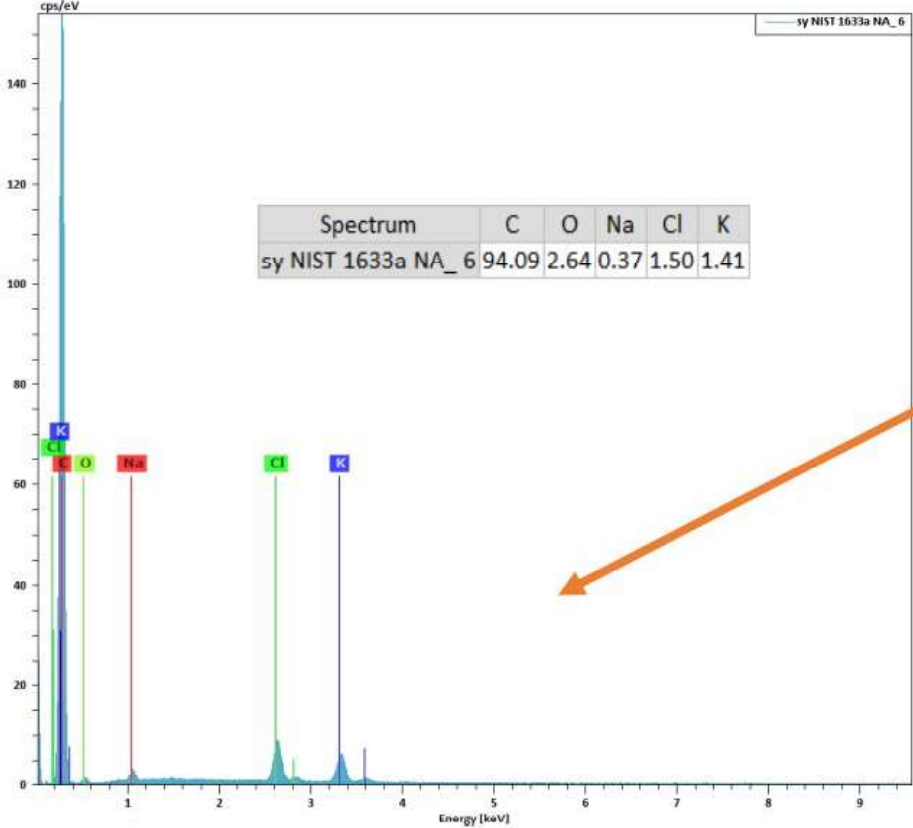
Syringe used for NIST 1633a (Unacidified)-2

Syringe used for snow sample spiked with NIST 1633a
Unacidified



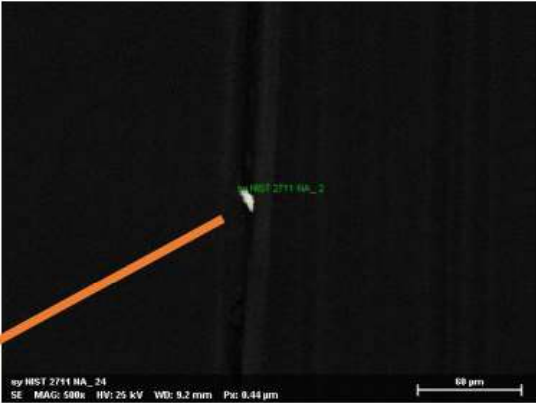
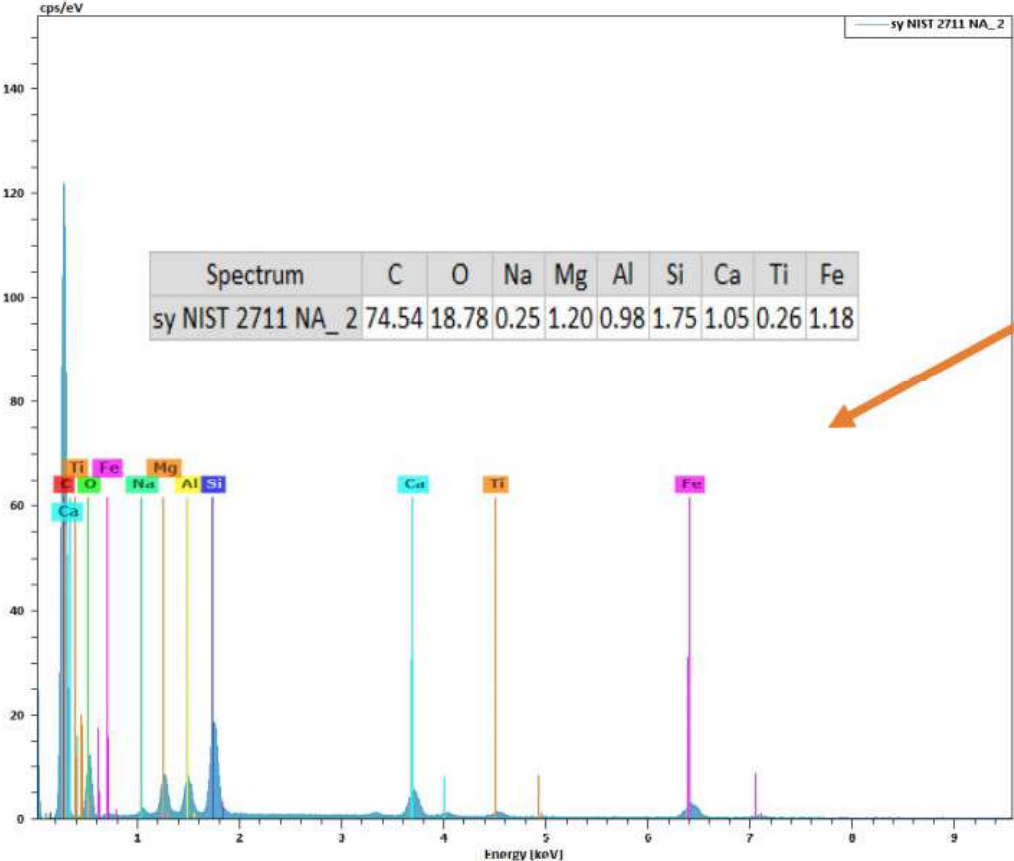
Syringe used for NIST 1633a (Unacidified)-3

Syringe used for snow sample spiked with NIST 1633a
Un acidified



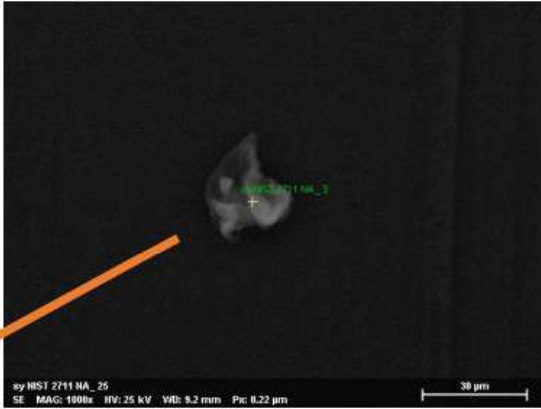
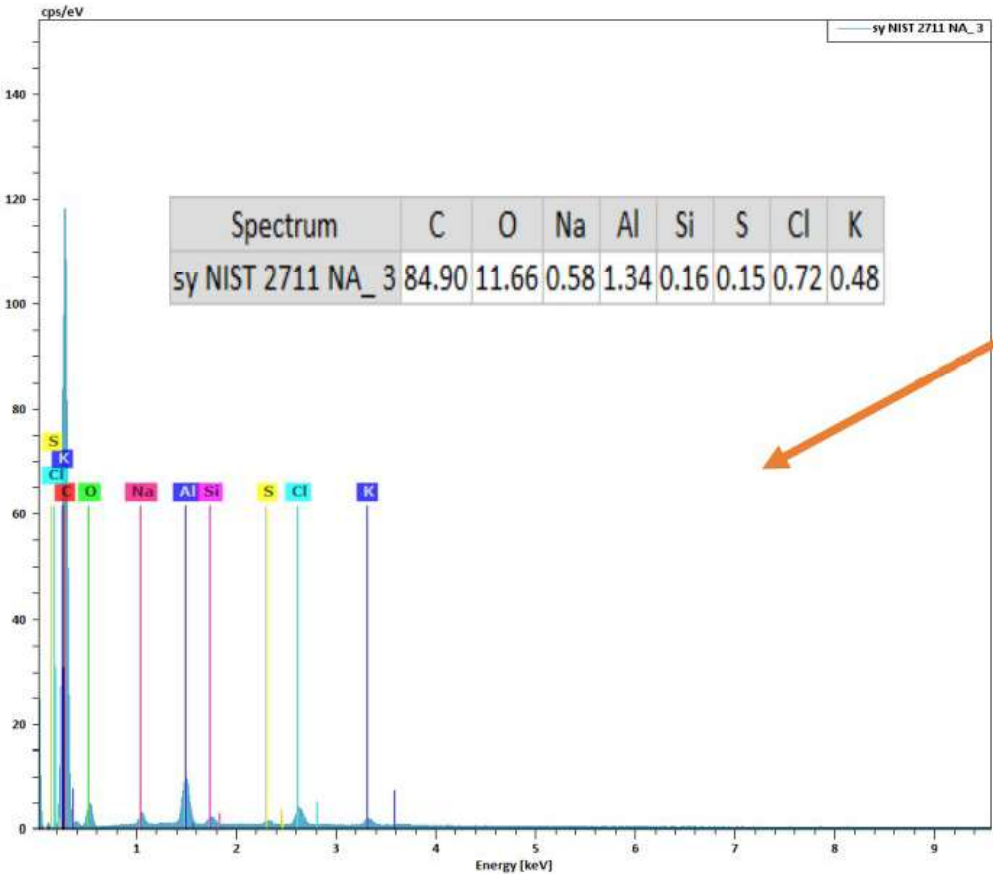
Syringe used for NIST 2711 (Unacidified)-1

Syringe used for snow sample spiked with NIST 2711
Un acidified



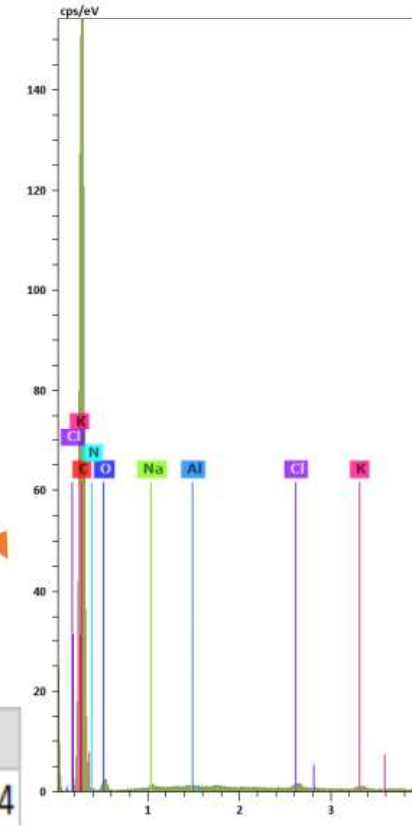
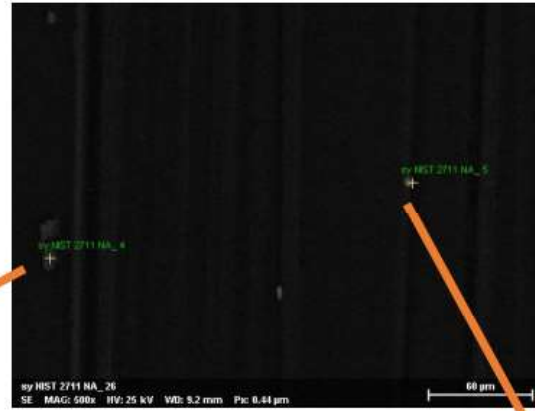
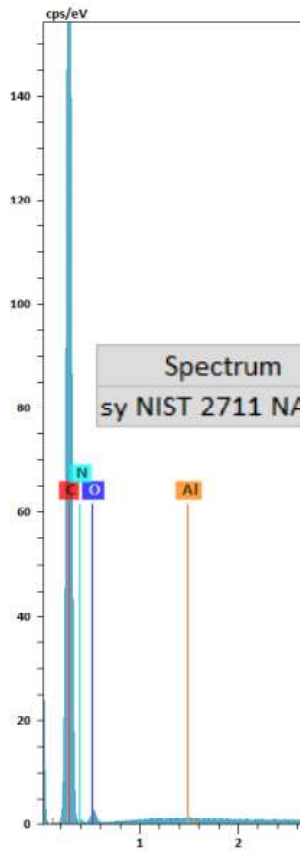
Syringe used for NIST 2711 (Unacidified)-2

Syringe used for snow sample spiked with NIST 2711
Un acidified



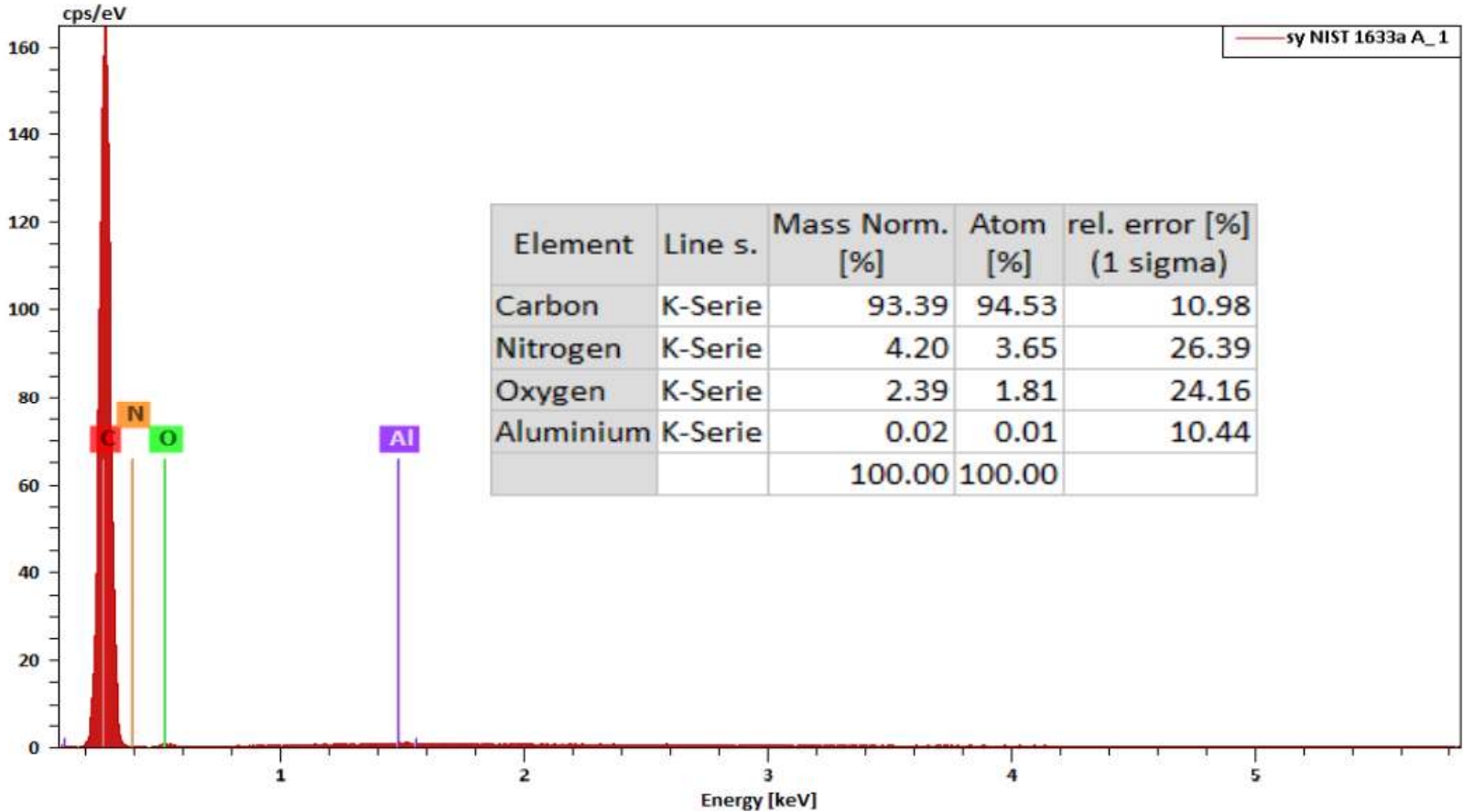
Syringe used for NIST 2711 (Unacidified)-3

Syringe used for snow sample spiked with NIST 2711
Un acidified



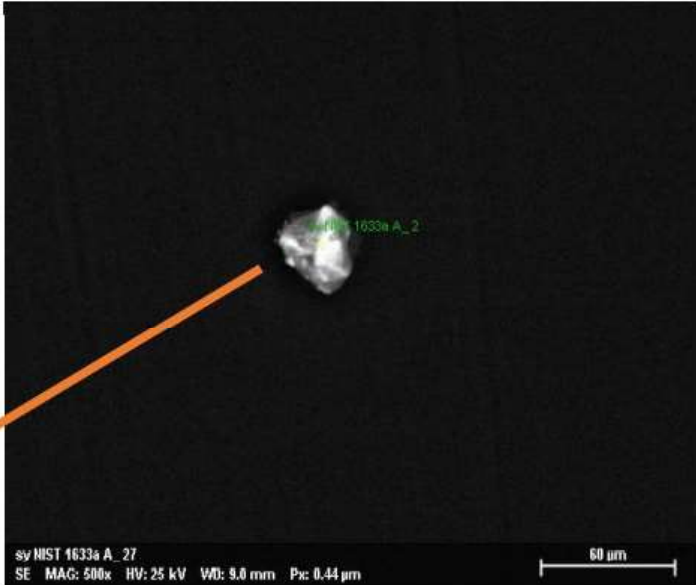
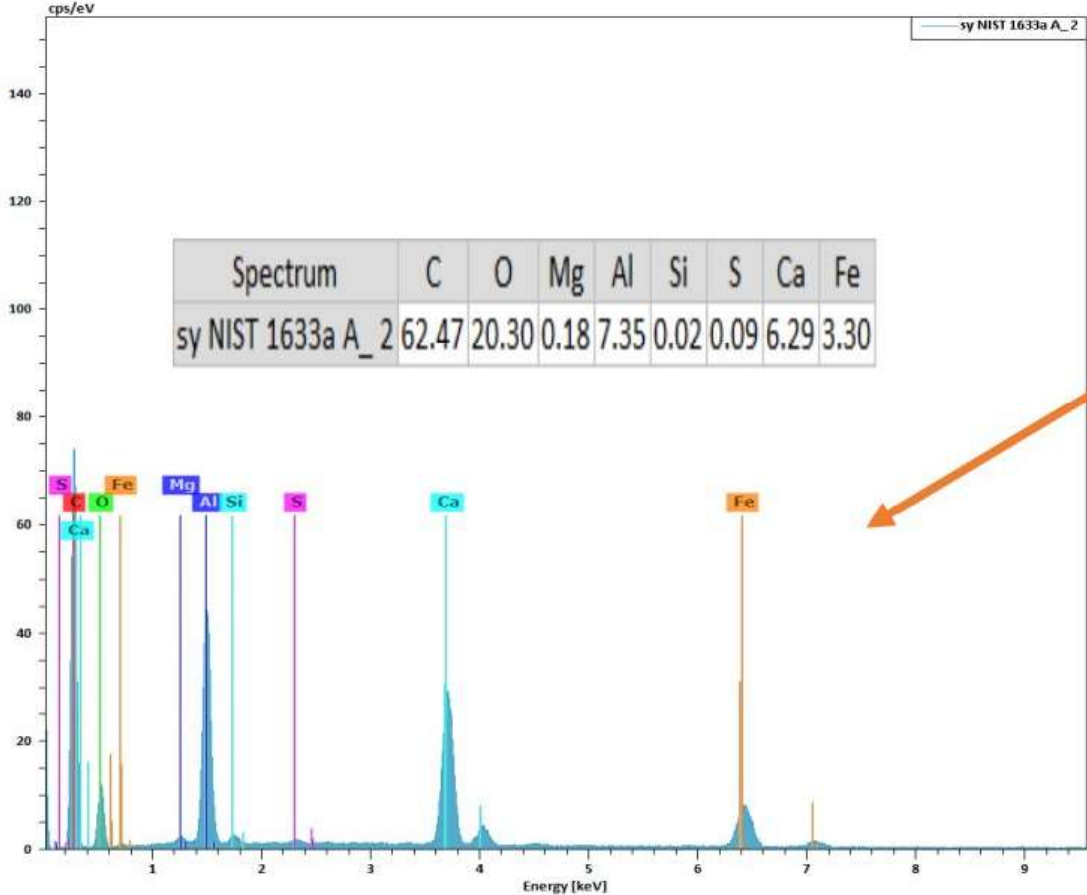
Syringe used for NIST 1633a (Acidified)-1

Syringe used for snow sample spiked with NIST 1633a
Acidified



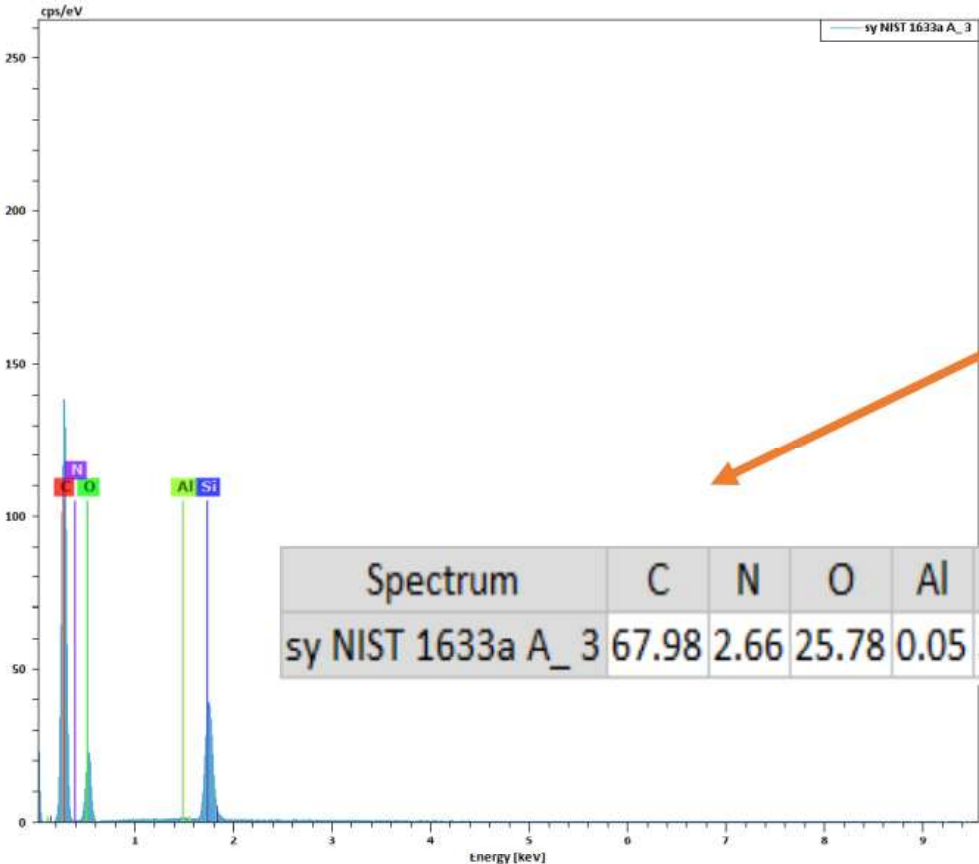
Syringe used for NIST 1633a (Acidified)-2

Syringe used for snow sample spiked with NIST 1633a Acidified



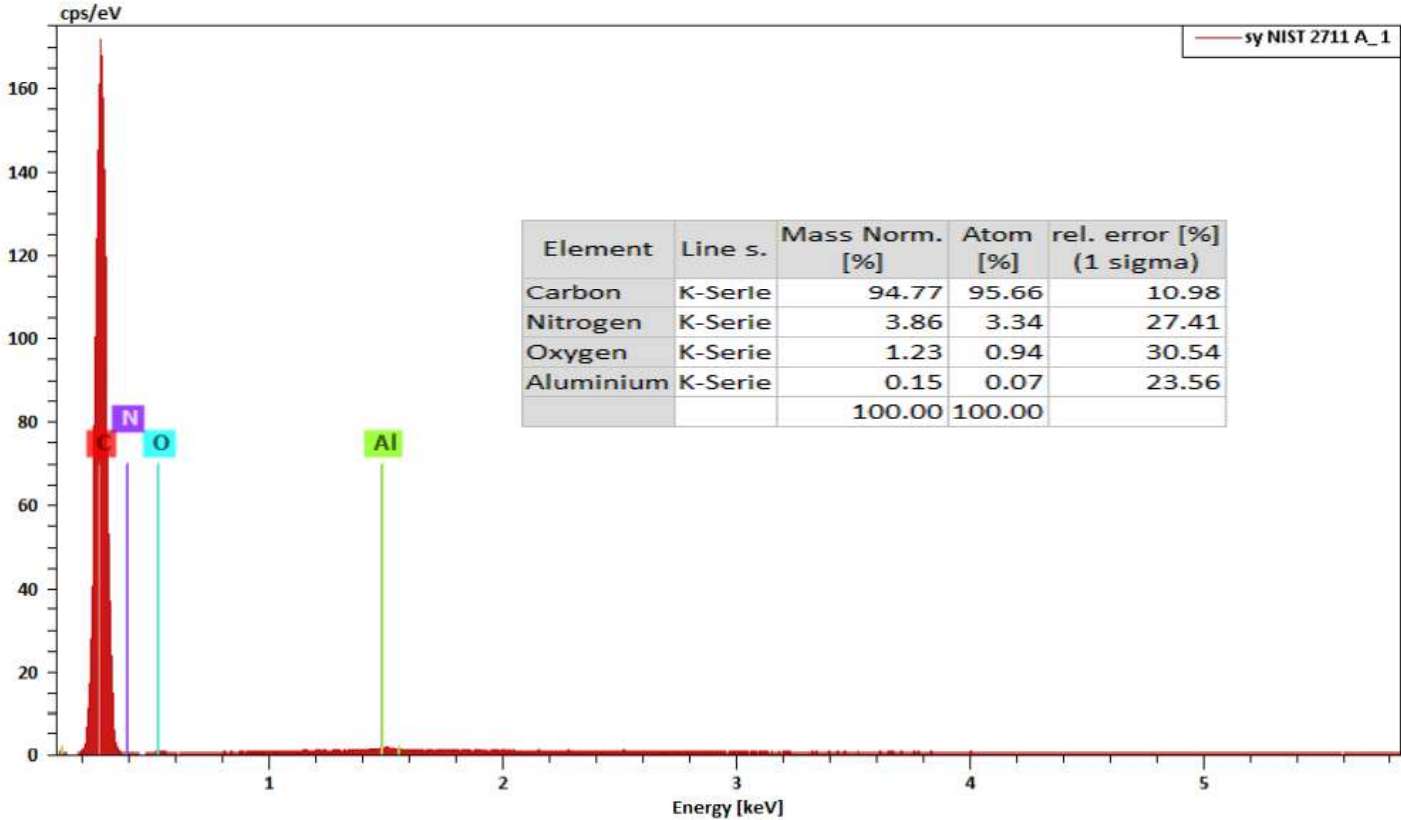
Syringe used for NIST 1633a (Acidified)-3

Syringe used for snow sample spiked with NIST 1633a Acidified



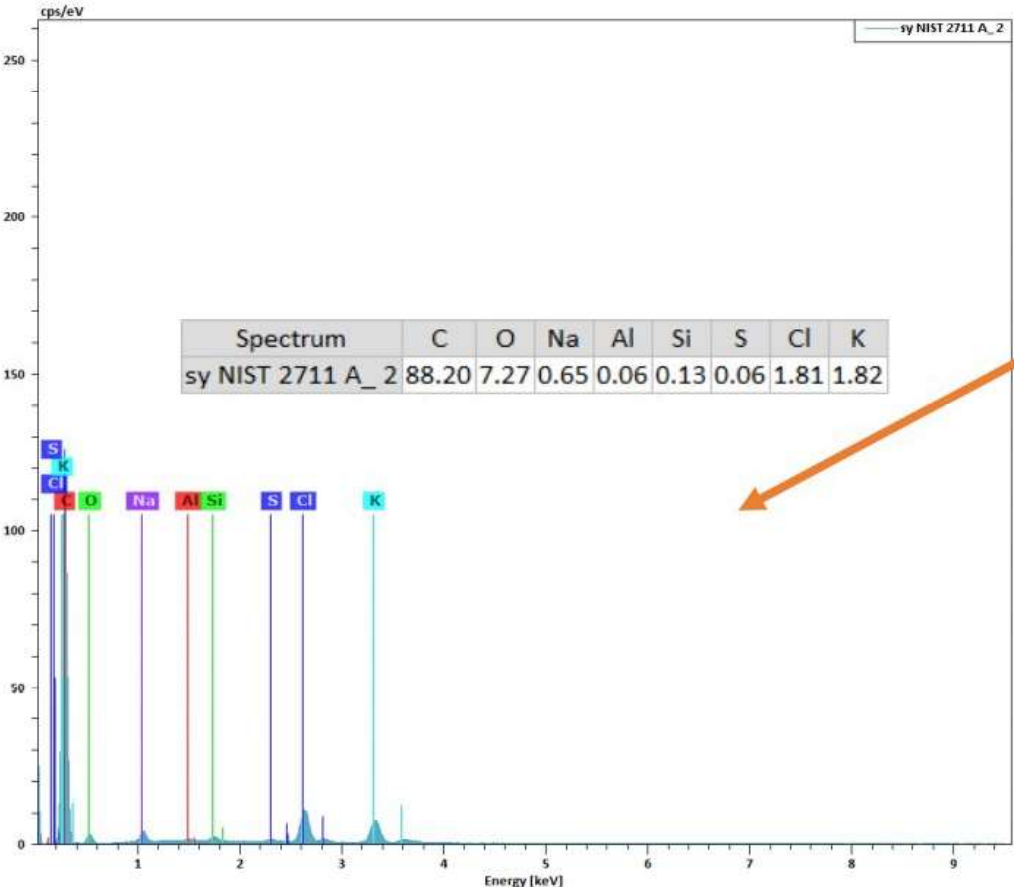
Syringe used for NIST 2711 (Acidified)-1

Syringe used for snow sample spiked with NIST 2711
Acidified



Syringe used for NIST 2711 (Acidified)-2

Syringe used for snow sample spiked with NIST 2711
Acidified



Syringe used for NIST 2711 (Acidified)-3

Syringe used for snow sample spiked with NIST 2711
Acidified

