

In Supplementary Information

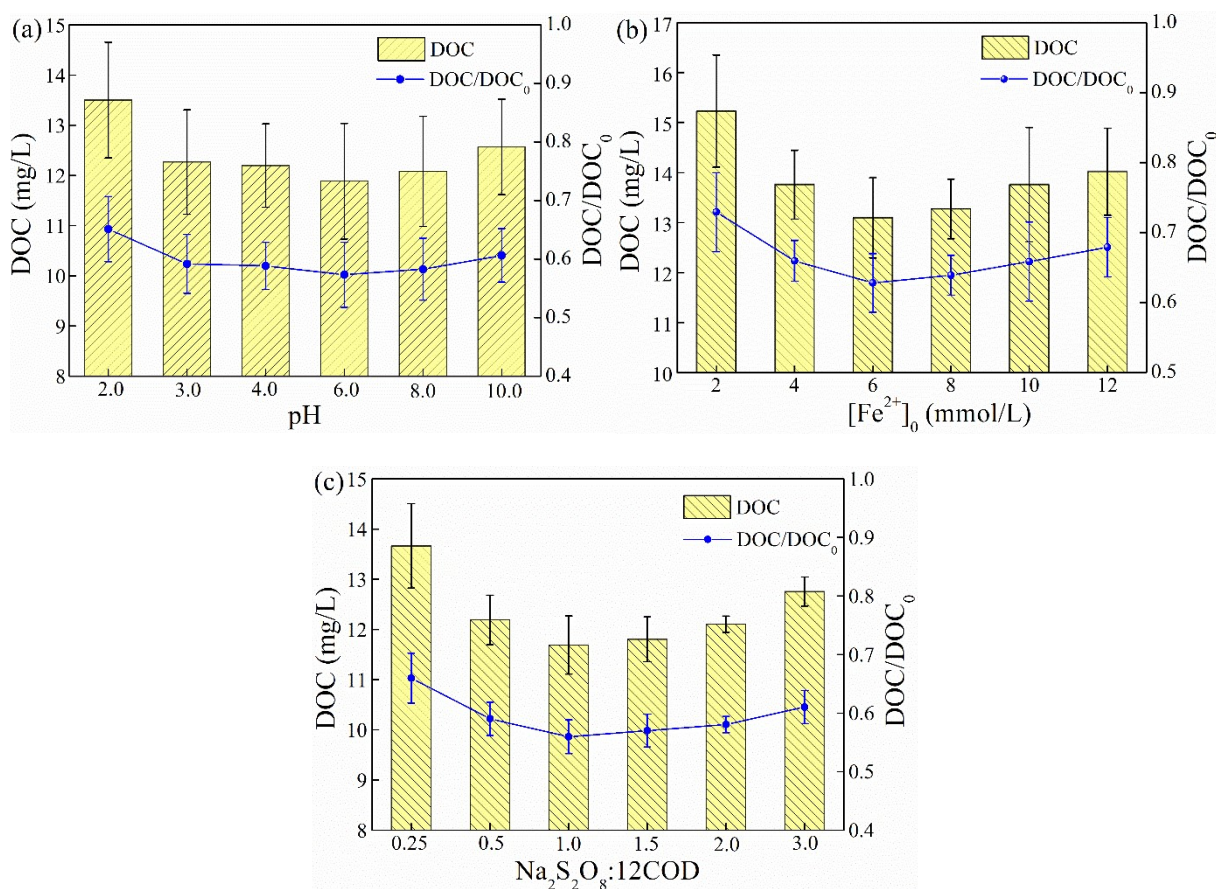


Fig. S1 Factors of DOC removal in PS process. (a) different initial pH value. Conditions: [Fe²⁺]₀ = 6.0 mmol/L, [Na₂S₂O₈]₀ = 6.0 mmol/L; (b) different [Fe²⁺]₀ at [Na₂S₂O₈]₀ = 6.0 mmol/L; (c) different ratio of initial Na₂S₂O₈:12COD at [Fe²⁺]₀ = 6.0 mmol/L.

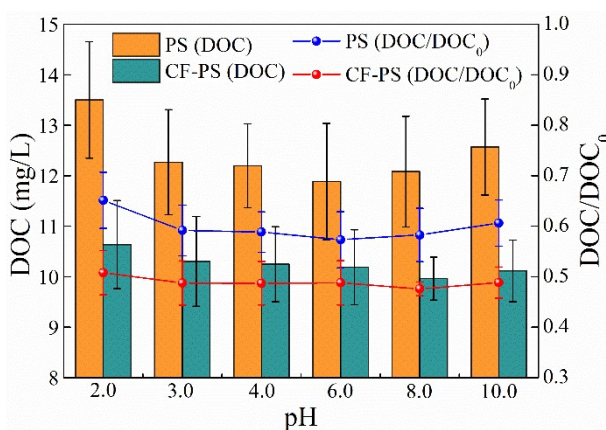


Fig. S2 The effect of initial pH on DOC removal in the PS and CF-PS processes. Conditions: [PAC]₀ = 20.0 mg/L; [Fe²⁺]₀ = 6.0 mmol/L; [Na₂S₂O₈]₀ = 6.0 mmol/L

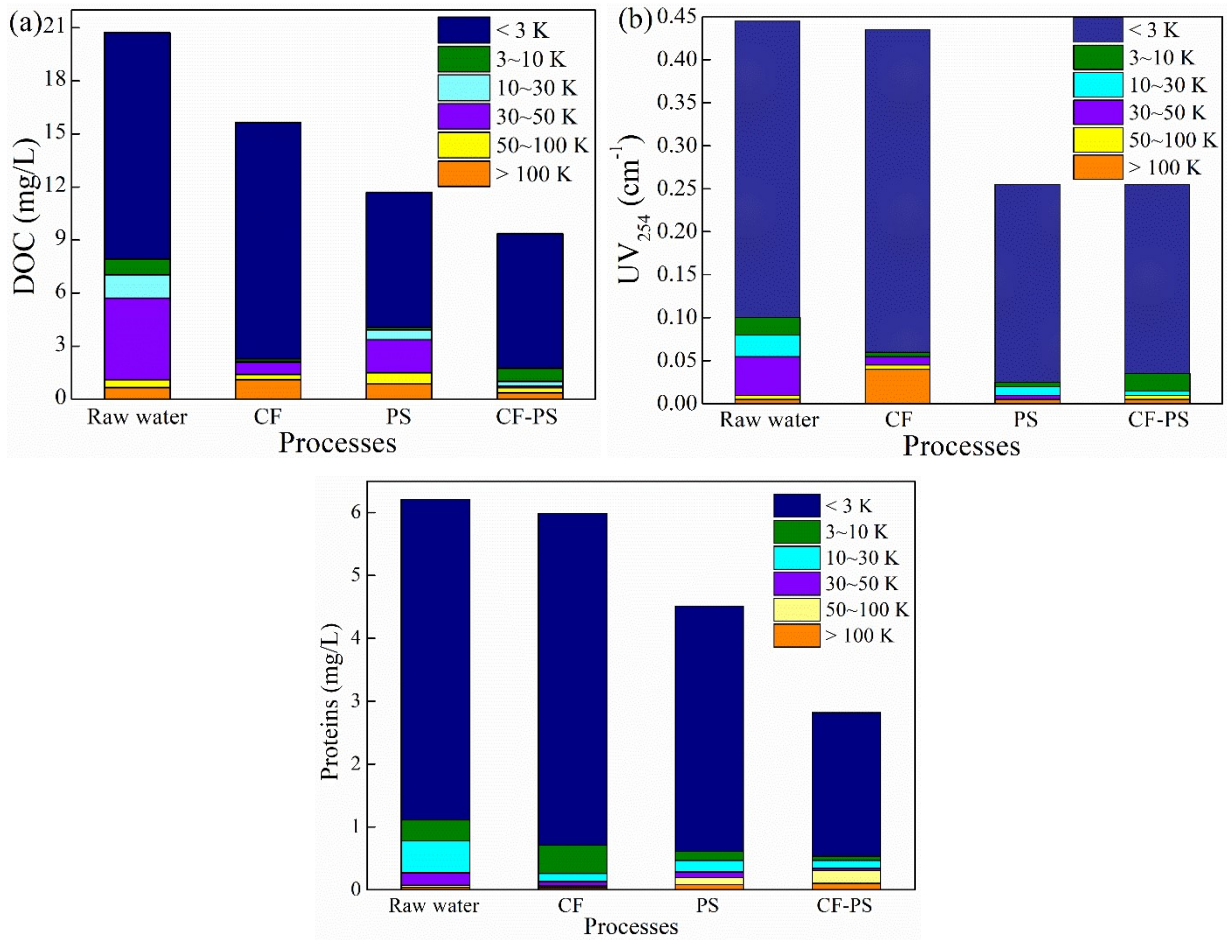
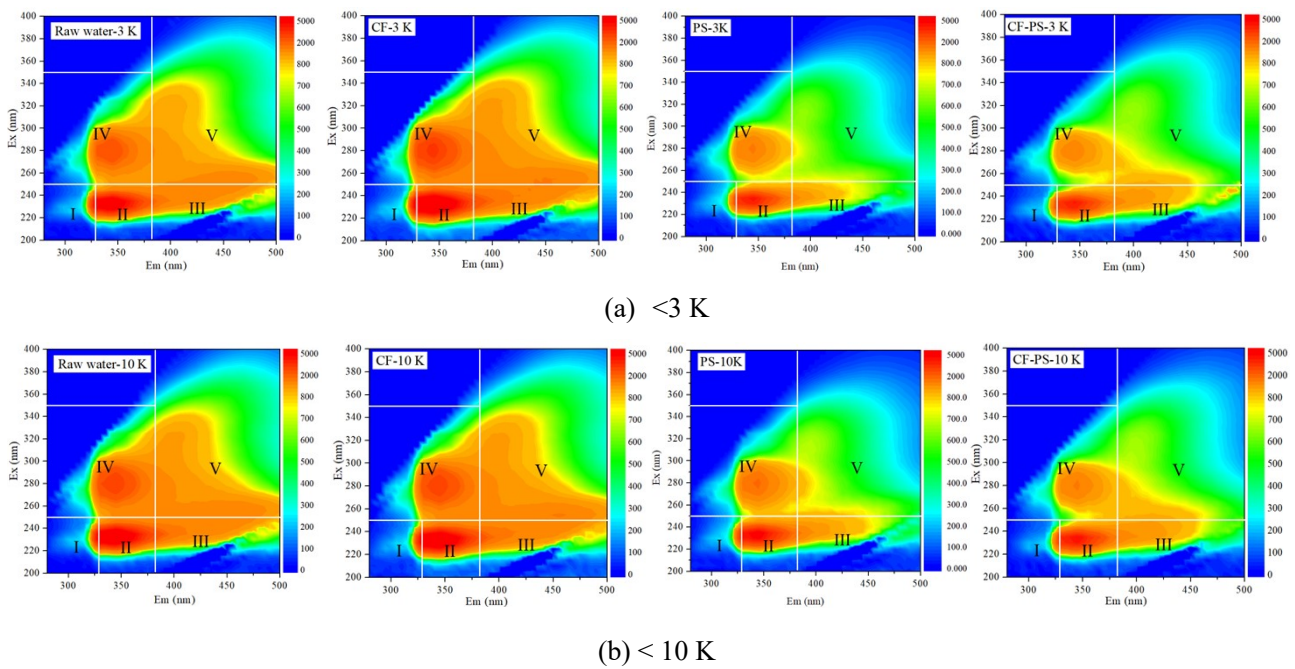
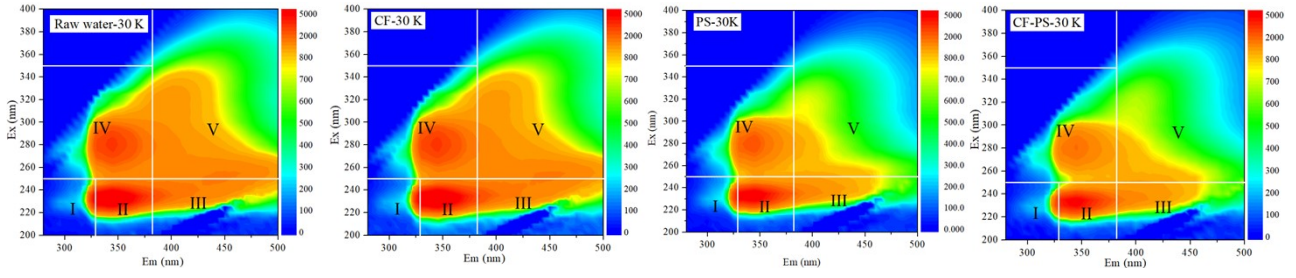
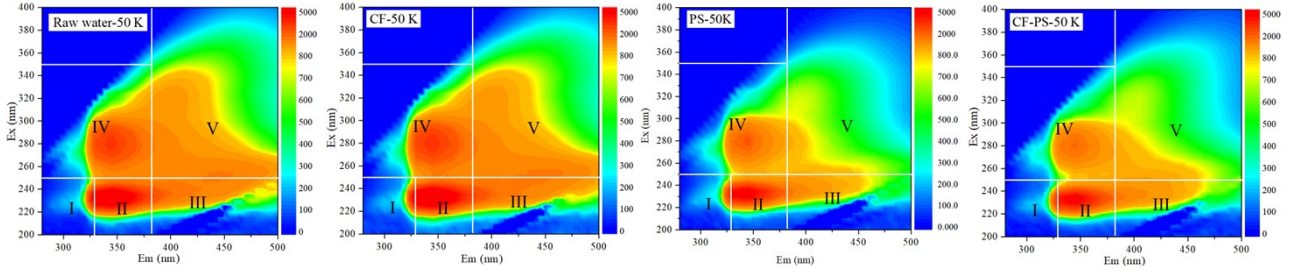


Fig. S3. MW distribution of organic matter under different processes. (a) DOC; (b) UV₂₅₄; (c) Proteins.

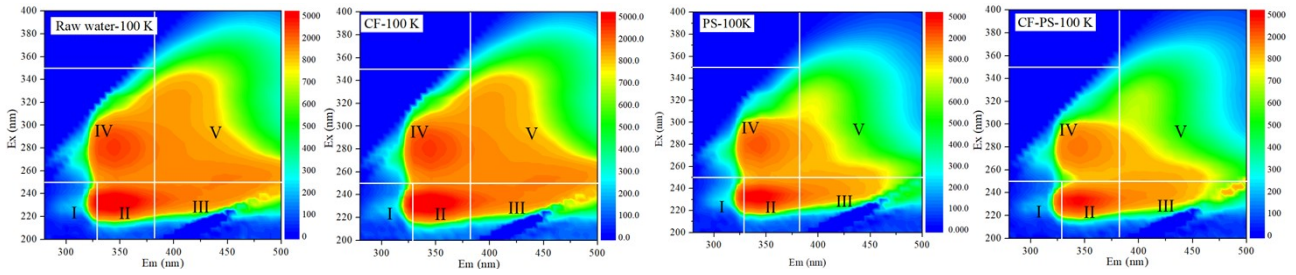




(c) < 30 K



(d) < 50 K



(e) < 100 K

Fig. S4 3D-EEM spectra of organic components with different MWs

