

1 Supporting information

2 Figure legends

3 Figure S1. The biopanning process of *Cra a 4* mimotopes by phage display technology

4 (A) Titration of the eluted and amplified phages.

5 (B) Agarose gel electrophoresis of phage DNA. Lane M: DNA marker; Lane 1-20, DNA phages.

6 Table S1. Location of the allergenic epitopes of *Cra a 4* predicted by immunoinformatic tools.

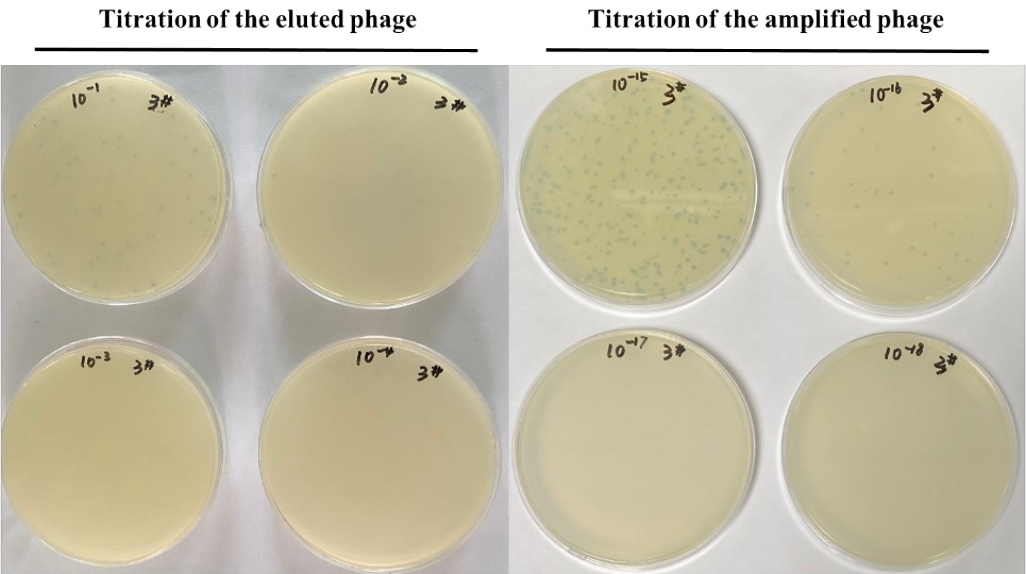
Tools	Amino acid regions
ABCpred	7-91, 93-178
BepiPred 1.0 Server	22-33, 44-48, 66-72, 81-85, 107-115, 144-147
NetMHC II 2.3 Server	58-73
Immunomedicine Group	11-17, 37-43, 72-81, 84-90, 93-104, 115-124, 129-139, 144-159
DNASStar Protean	19-36, 64-75, 80-87, 106-116, 141-145, 161-169

7

8

9 Figure S1

A



B

