

Fig.S1 Pathological analysis of liver (**a**) and kidney (**b**) of experimental mice at days 3, 7, and 14 post-surgery. CK means the normal group mice without surgery; M means the model group mice with surgery only; L and H mean the post-surgery mice administrated with 200 mg/kg or 400 mg/kg egg white peptides, respectively.

Fig.S2 HPLC chromatograms of a mixed standard solution of 20 amino acids (**a**) and serum samples in each experimental group (**b**). CK means the normal group mice without surgery; M means the model group mice with surgery only; L and H mean the post-surgery mice administrated with 200 mg/kg or 400 mg/kg egg white peptides, respectively. The letters “a-f” means significant different at day 3, 7, and 14 post-surgery among each type of amino acid with $p < 0.05$.

Fig. S1

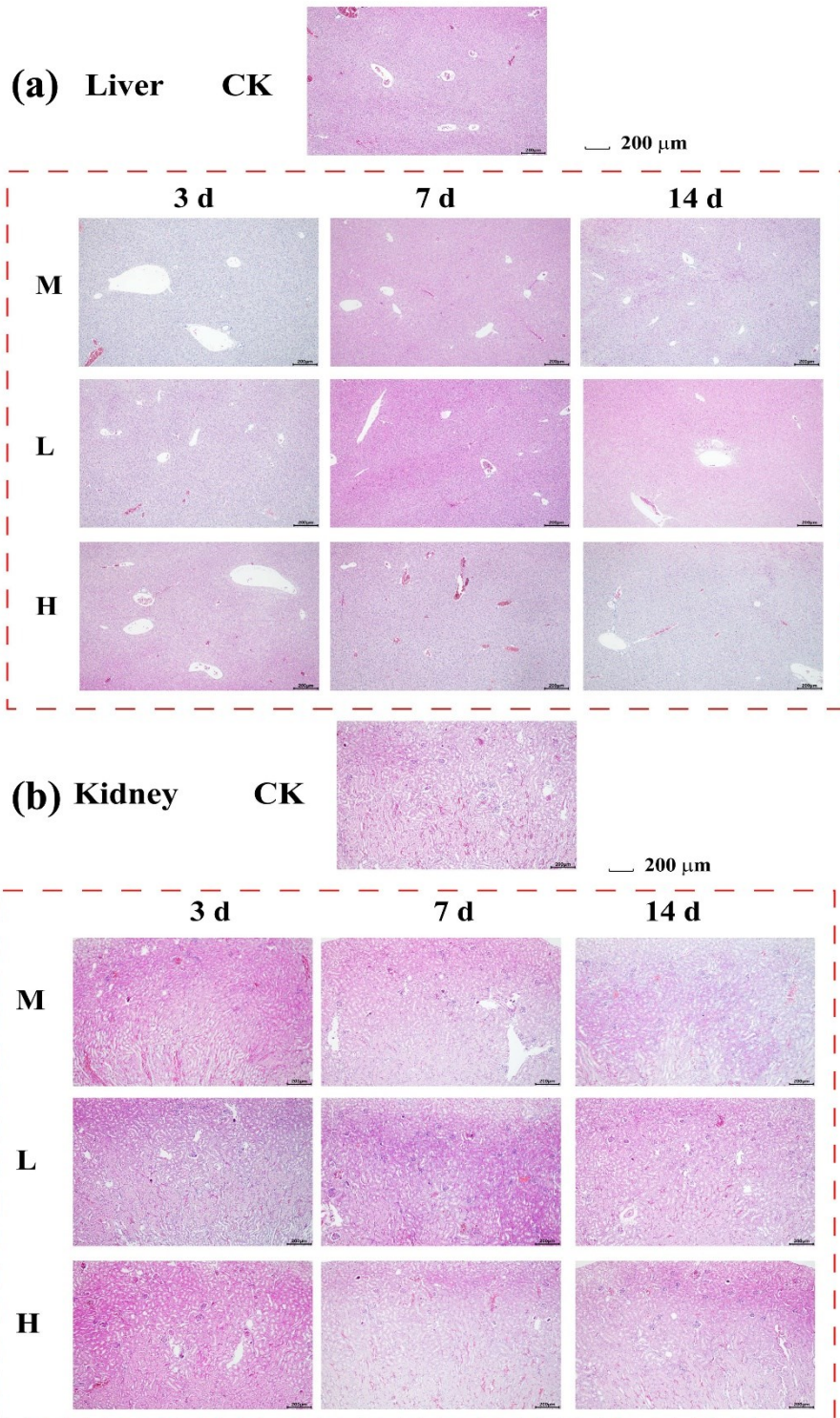
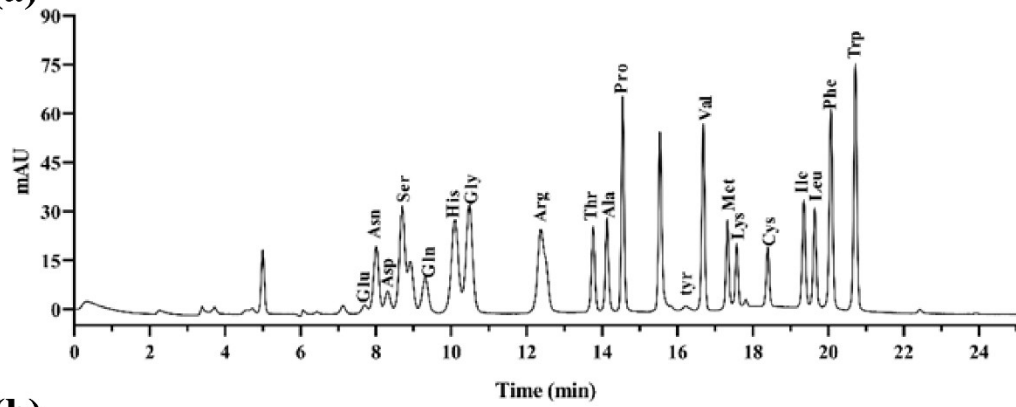


Fig. S2

(a)



(b)

