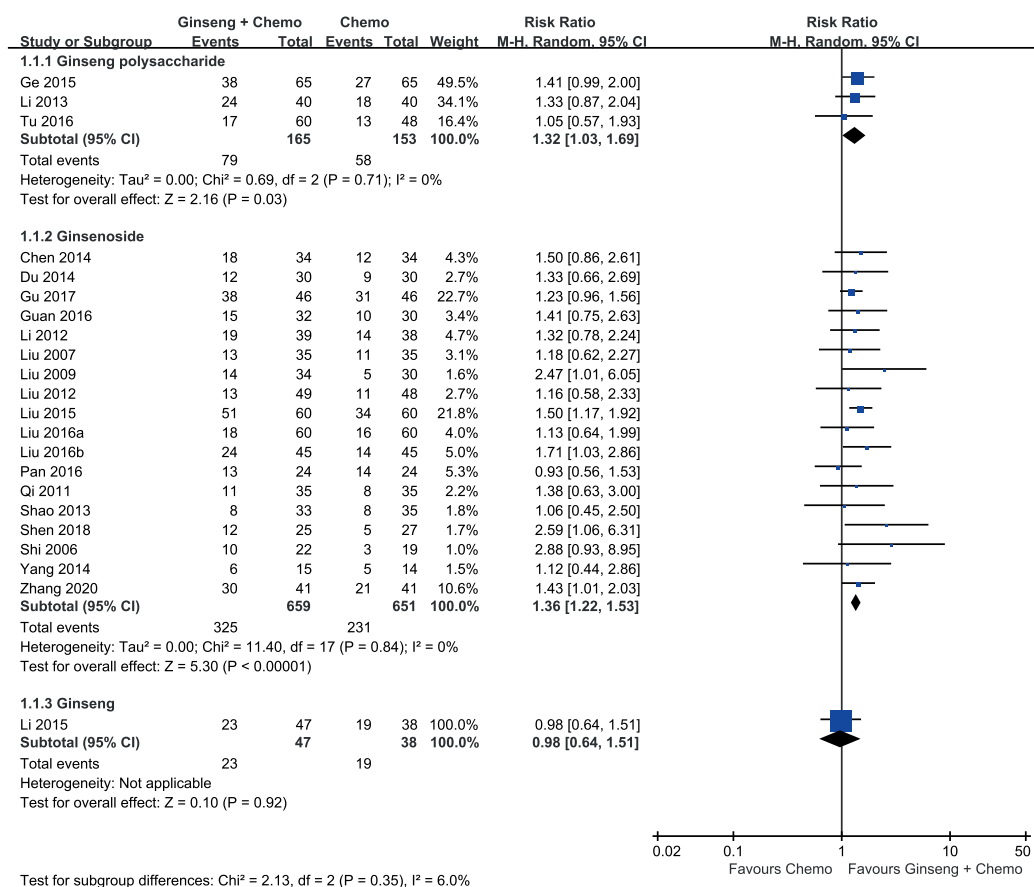
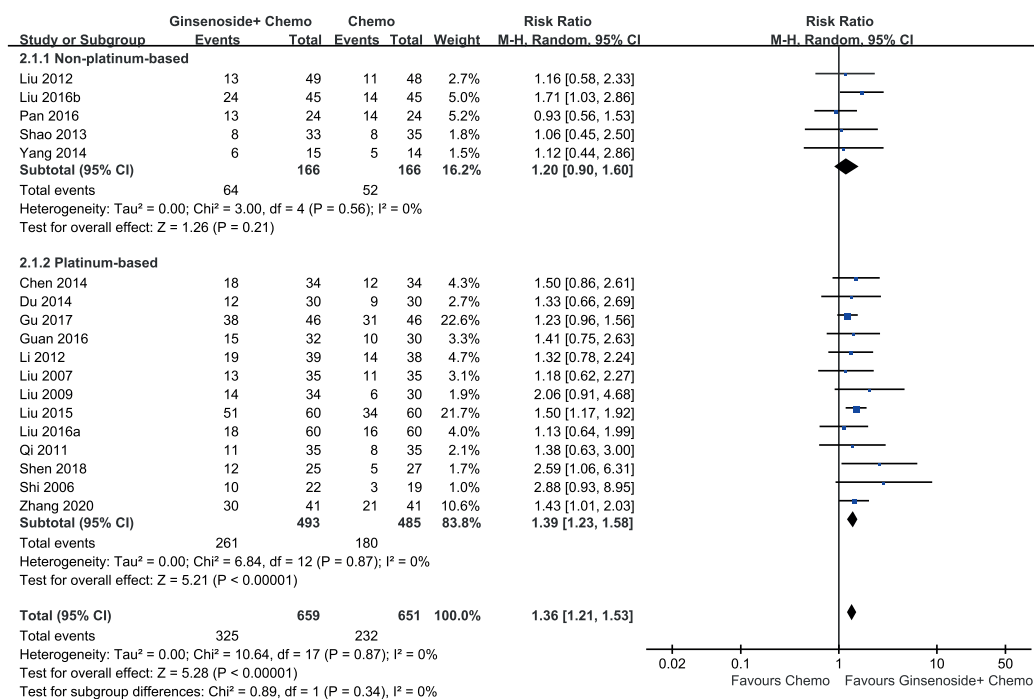


(A) ORR (Type of ginseng and its ingredients)

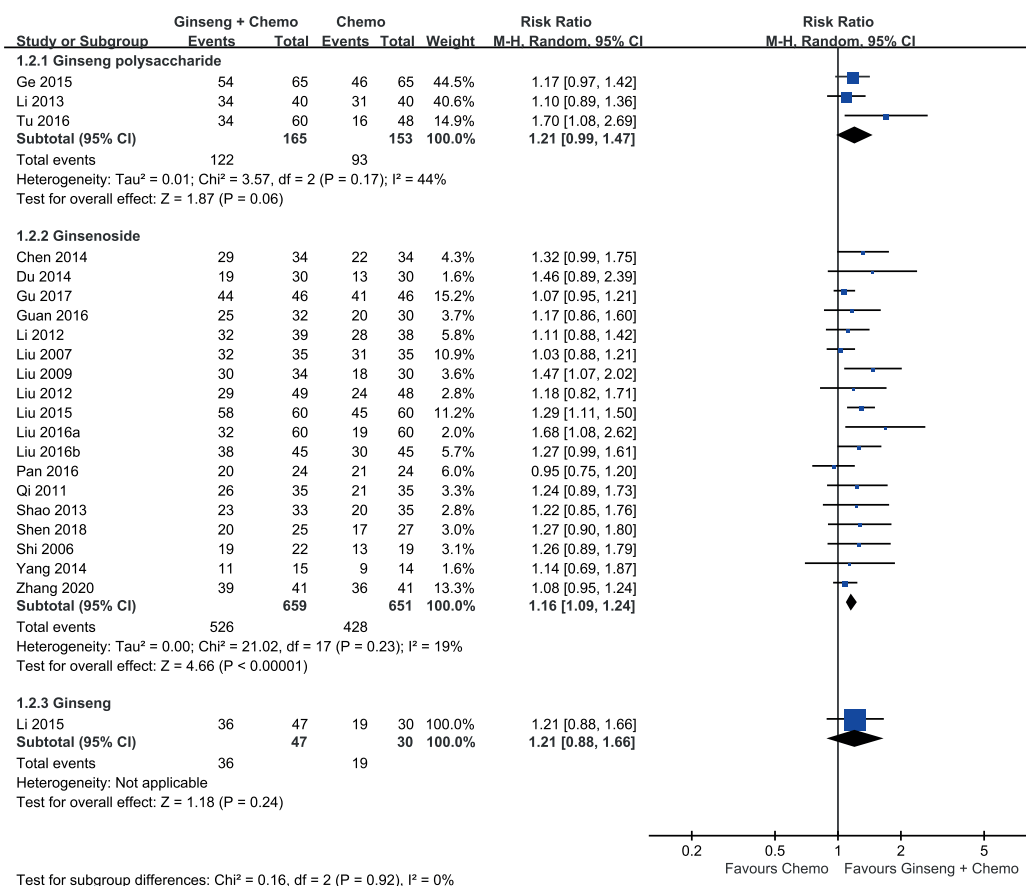


(B) ORR (Type of chemotherapy)

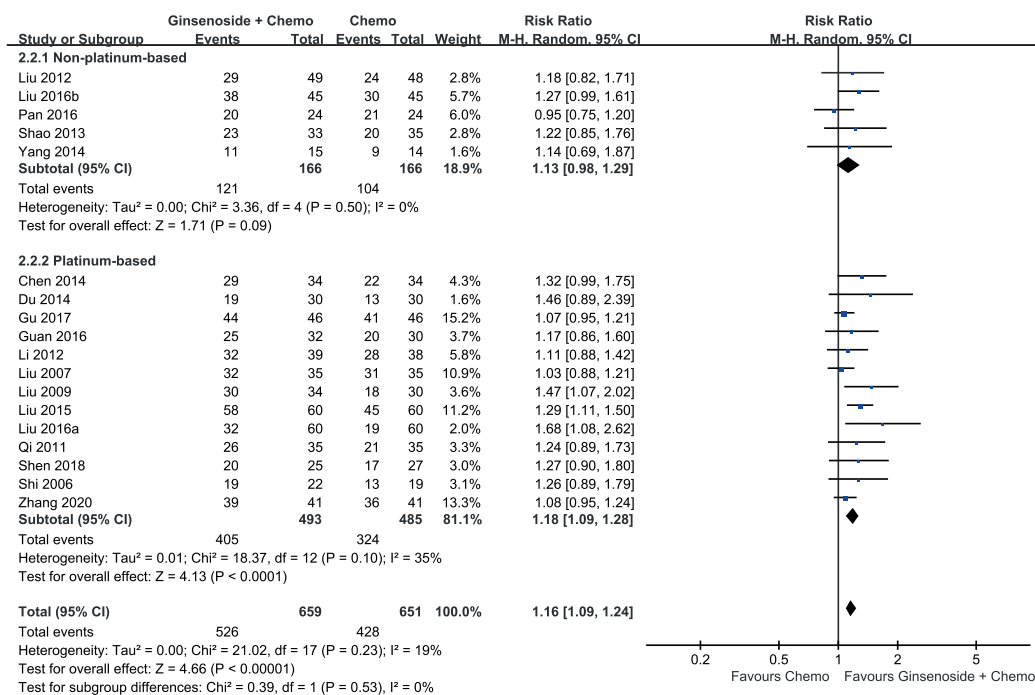


Supplementary 1. Forest plots of objective response rate (ORR) for subgroups: (A) types of ginseng and its ingredients, (B) types of chemotherapy

(A) DCR (Type of ginseng and its ingredients)

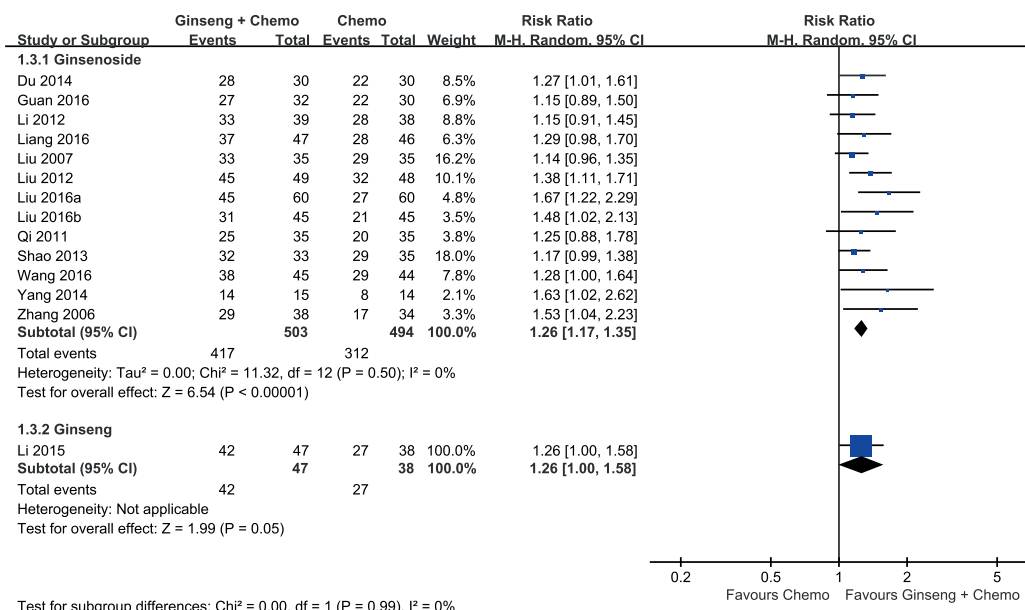


(B) DCR (Type of chemotherapy)

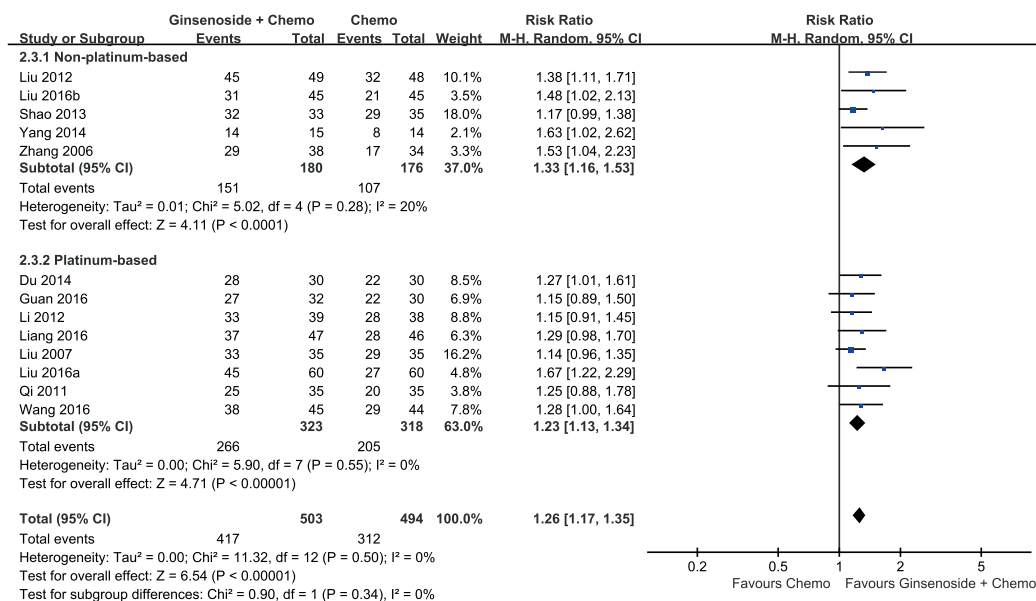


Supplementary 2. Forest plots of disease control rate (DCR) for subgroups: (A) types of ginseng and its ingredients and (B) types of chemotherapy

(A) KPS (Type of ginseng and its ingredients)



(B) KPS (Type of chemotherapy)



Supplementary 3. Forest plots of Karnofsky performance status (KPS) for subgroups: (A) types of ginseng and its ingredients, (B) types of chemotherapy