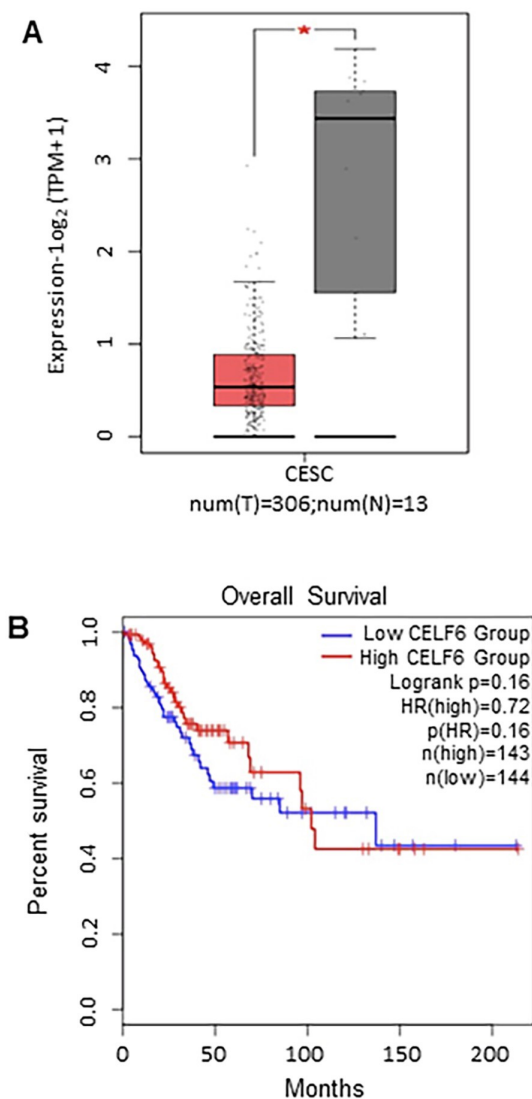


Supplementary Figure 2.



Supplementary Figure 2. The expression of CELF6 and its relation with survival in cervical cancer patients

(A) The mRNA expression level of CELF6 in TCGA cervical cancer (CESC) dataset including 13 tumor free tissues and 306 tumor tissues. The box plot is generated by GEPIA2 with jitter (size = 0.4). Red cluster: tumor samples; gray cluster: normal samples. Genes with higher $|\log_2\text{FC}|$ values (>1) and lower Q-values (<0.01) were considered differentially expressed genes. (B) Mean OS between patients with high and low CELF6 expression in our cohort, analyzed by GEPIA.