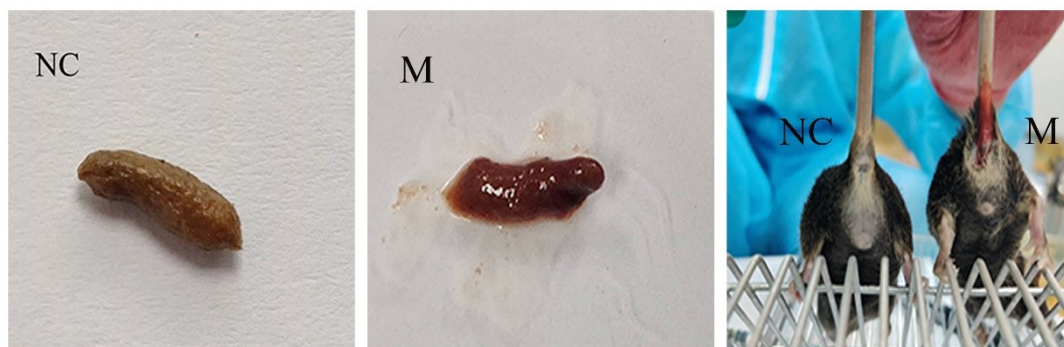
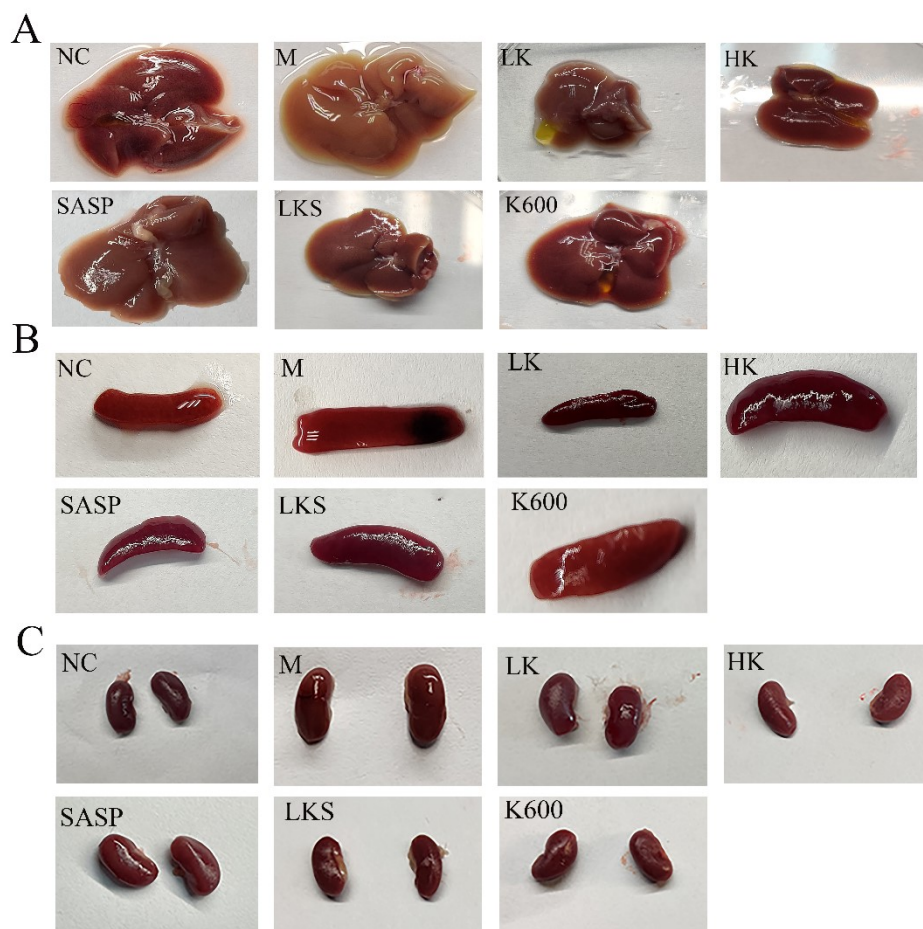


Supplementary Materials

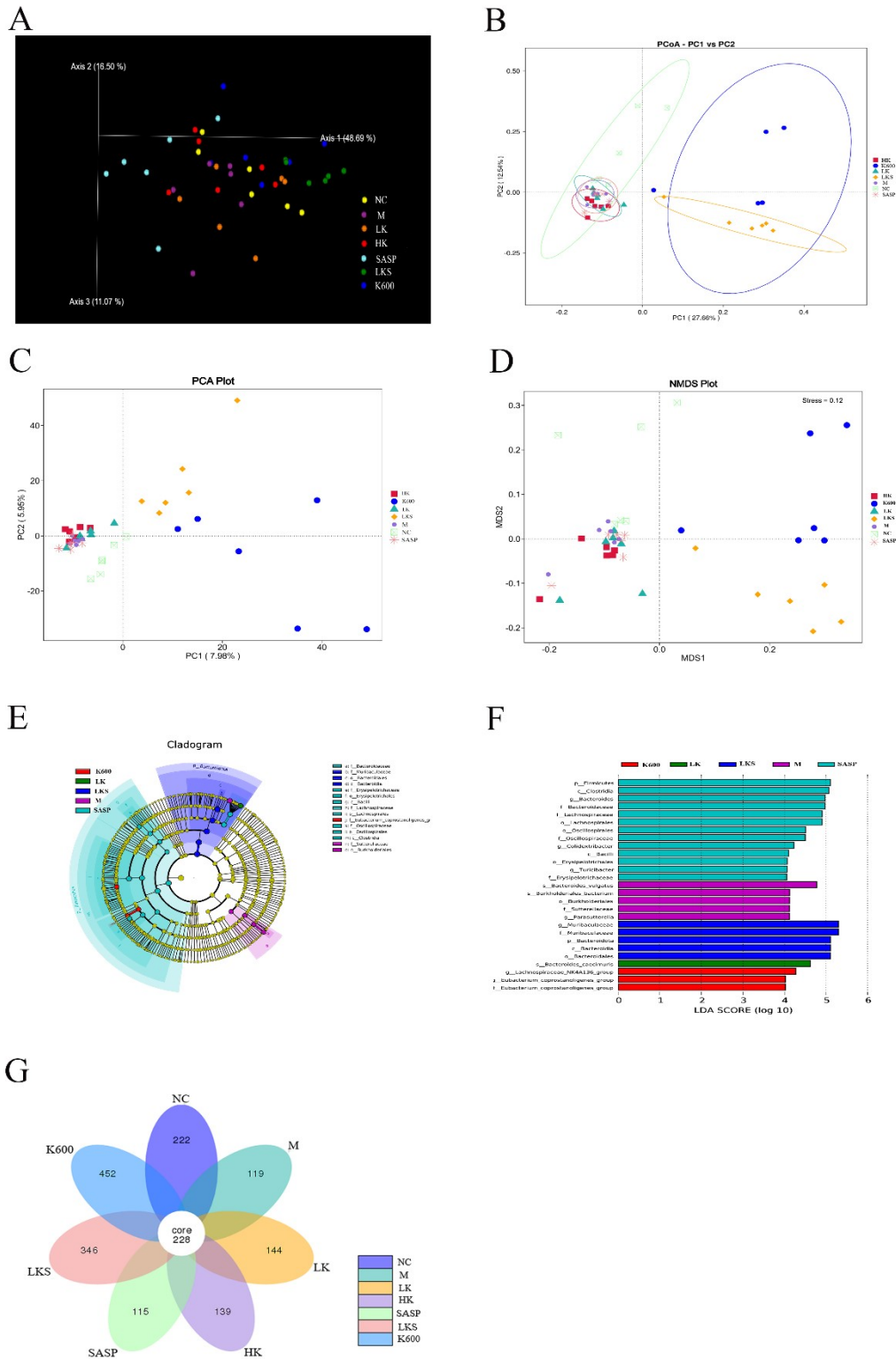


Supplementary Fig. S1. The fecal morphology and rectal bleeding in normal and model mice.



Supplementary Fig. S2. KOS treatment improves the morphology of liver (A), spleen

(B) and kidney (C) in mice.



Supplementary Fig. S2. KOS altered the composition of the colon microbiota in colitis

mice. β -diversity analyzed by PCoA (A-B), PCA (C), NMDS (D). KOS cladogram of LEfSe analysis (E). Linear discriminant analysis (LDA) score for different taxa abundances (F). Flower diagram of ASVs (G). Data are presented as the mean \pm SEM (n=6 mice/group).