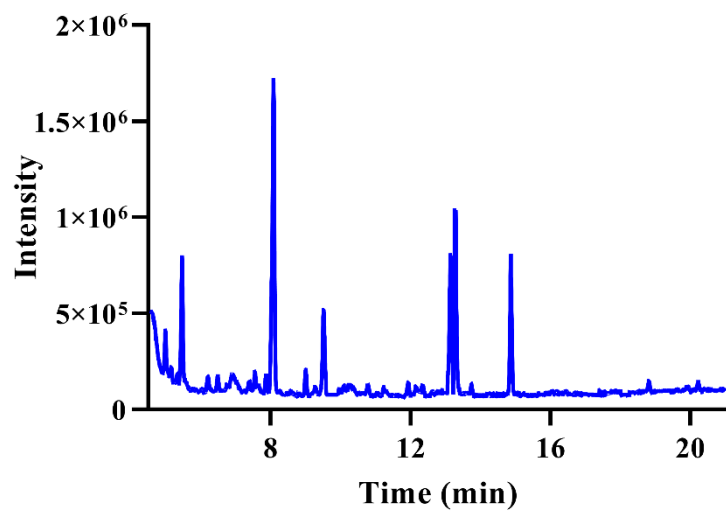


**Table S1** Chemical composition of MLO 1-2

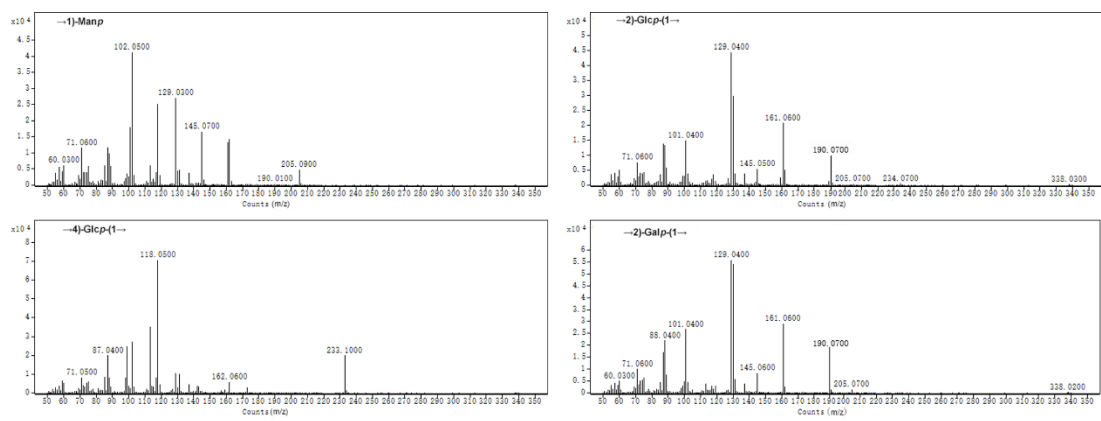
Compound	Content (mg per g dry weight)
Protein	0.62±0.05
Total sugar	995.17±3.31
Reducing sugar	75.31±0.25
Total phenol	0.02±0.01
Total flavonoid	0.00±0.00

**Table S2** The standard curves of monosaccharide.

Monosaccharide	Equations	R <sup>2</sup>
Man	$y = 6109.9x - 251.91$	0.9984
Rib	$y = 3301.9x - 36.36$	0.9989
Rha	$y = 5313.0x - 530.55$	0.9918
GlcA	$y = 1315.0x - 109.31$	0.9962
GalA	$y = 2415.3x - 9.92$	0.9997
Glc	$y = 2597.3x - 1137.50$	0.9925
Gal	$y = 3772.2x - 161.07$	0.9975
Xyl	$y = 3148.1x - 250.70$	0.9921
Ara	$y = 4046.8x - 41.57$	0.9972
Fuc	$y = 3286.3x - 565.10$	0.9922



**Figure S1.** The total ion chromatogram of the PMAA of MLO 1-2



**Figure S2.** The EI-MS spectra of the PMAA of MLO 1-2