

## Electronic Supplementary Information for

### Self-Healing Polymer-Clay Hybrids by Facile Complexation of a Waterborne Polymer with a Clay

*Aranee (Pleng) Teepakakorn<sup>1</sup>, Makoto Ogawa<sup>2\*</sup>*

1. School of Molecular Science and Engineering, 2. School of Energy Science and Engineering,  
Vidyasirimedhi Institute of Science and Technology (VISTEC), 555 Moo 1 Payupnai, Wangchan,  
Rayong 21210, Thailand

\*E-mail: makoto.ogawa@vistec.ac.th.

#### **List of content**

**Figure S1.** XRD patterns of 4 PVA-SWF (a,b) and 5 PVA-SWF (c,d) films before (black) and after (red) the soaking in water for 24 h.

**Figure S2.** Microscopy images of re-healing 1.80 PVA-SWF film for 10 times by immersion in water for 1 min.

**Figure S3.** Microscopy images of the engraved 1.80 PVA-SWF films with the thickness of 2  $\mu\text{m}$  (top) and 1  $\mu\text{m}$  (bottom) before and after immersion in water for 30 min and 24h, respectively.

**Figure S4.** Photographs of 1.80 PVA-SWF coated on hook; as prepared (A,D), attachment on the glass (B) and frosted glass (E) with hanging 500 g of iron balls, pull out the hook from the glass (C) and frosted glass (F)

**Figure S5.** Temporal evolution of the depth along the length of the defect in the 1.80 PVA-SWF films before (black) and after (red) attachment on the frosted glass

**Figure S6.** Temporal evolution of the depth along the length of the engraved 0.36 (A), 1.08 (B), 1.80 (C), 4 (D) and 5 (E) PVA-SWF films

**Figure S7.** SEM image of a synthetic hectorite (Sumecton SWF) with the magnification of 50k.

**Figure S8.** Schematic illustration and photographs showing the dimension of specimen for the “shear lap test”.

**Figure S9.** Relationship between the shear load and the displacement of 0.36 (red) and 1.80 (black) PVA-SWF films.

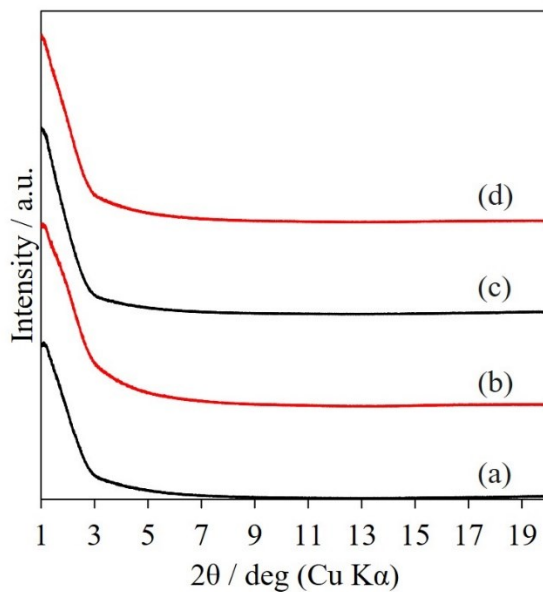
**Table S1.** Weights of the films before and after the soaking in water for 24 h

**Video S1.** Attachment the hook on the glass window

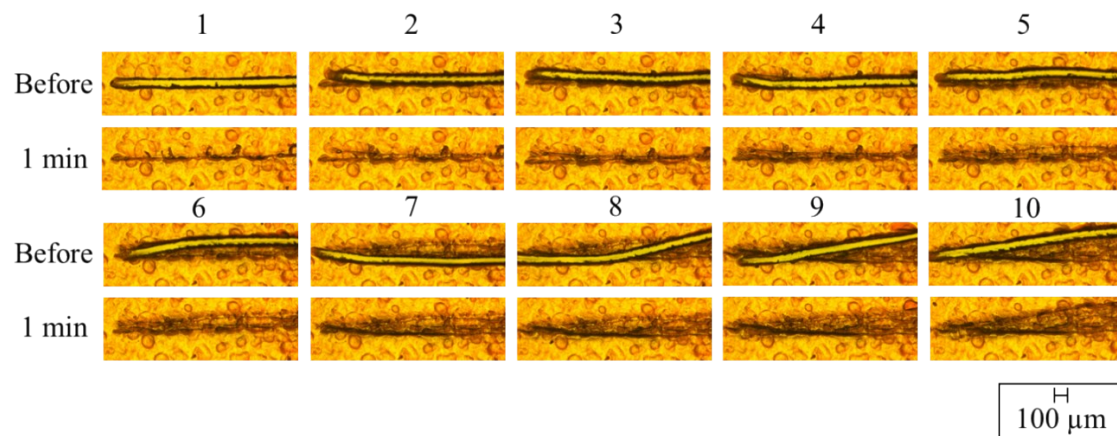
**Video S2.** Attachment the hook on the frosted glass window

**Video S3.** Pull out the hook from the glass window

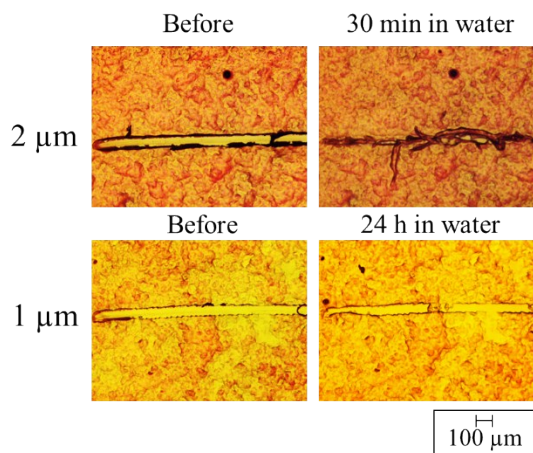
**Video S4.** Pull out the hook from the frosted glass window



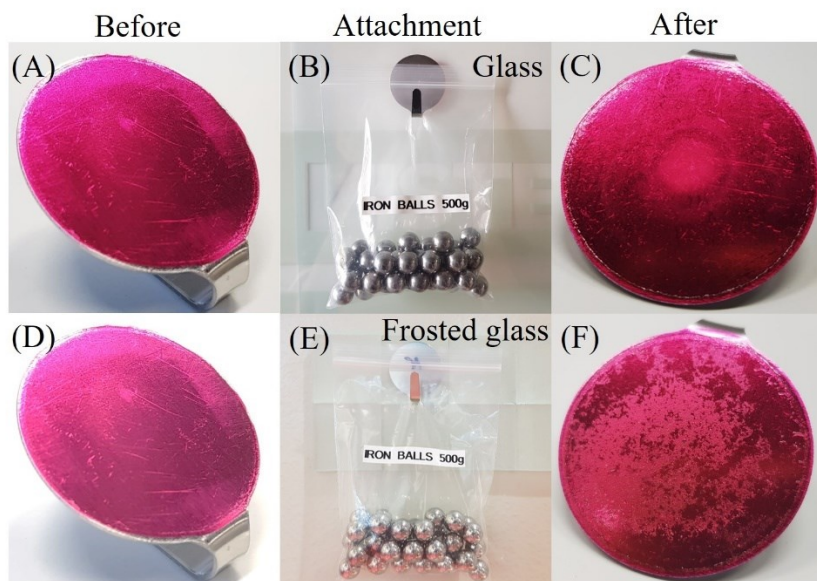
**Figure S1.** XRD patterns of 4 PVA-SWF (a,b) and 5 PVA-SWF (c,d) films before (black) and after (red) the soaking in water for 24 h.



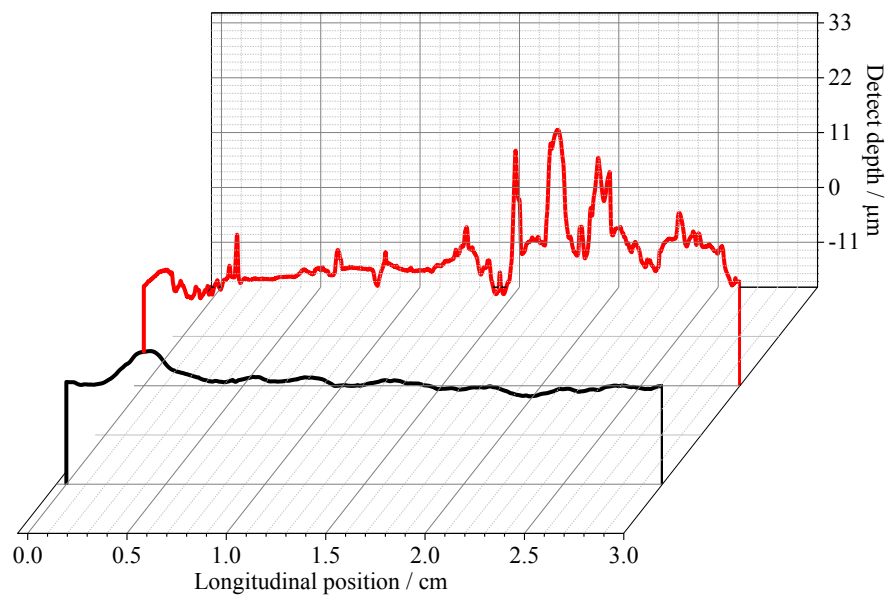
**Figure S2.** Microscopy images of re-healing 1.80 PVA-SWF film for 10 times by immersion in water for 1 min.



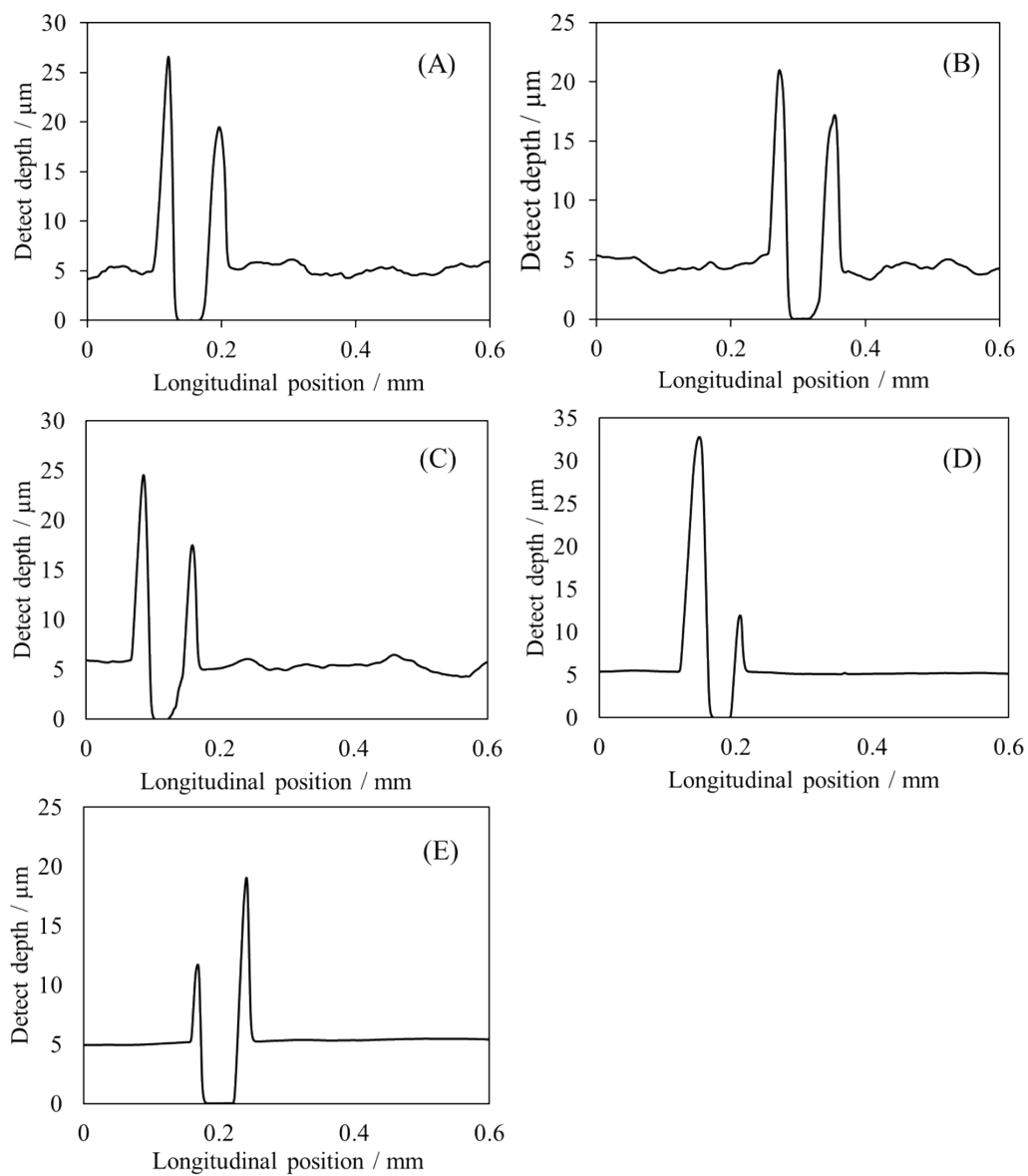
**Figure S3.** Microscopy images of the engraved 1.80 PVA-SWF films with the thickness of 2 μm (top) and 1 μm (bottom) before and after immersion in water for 30 min and 24h, respectively.



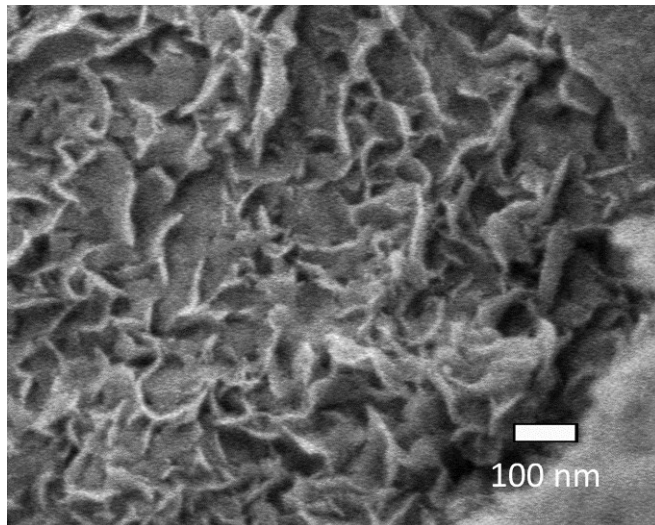
**Figure S4.** Photographs of 1.80 PVA-SWF coated on hook; as prepared (A,D), attachment on the glass (B) and frosted glass (E) with hanging 500 g of iron balls, pull out the hook from the glass (C) and frosted glass (F)



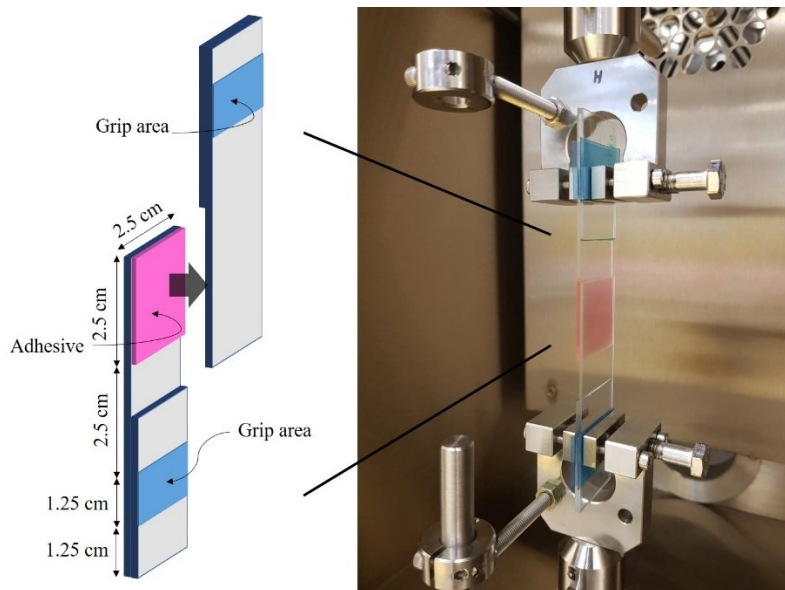
**Figure S5.** Temporal evolution of the depth along the length of the defect in the 1.80 PVA-SWF films before (black) and after (red) attachment on the frosted glass



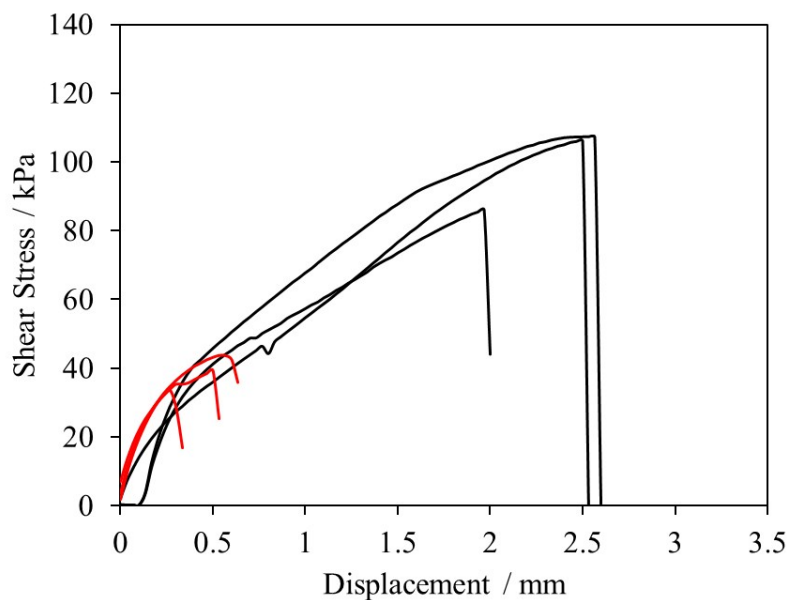
**Figure S6.** Temporal evolution of the depth along the length of the engraved 0.36 (A), 1.08 (B), 1.80 (C), 4 (D) and 5 (E) PVA-SWF films



**Figure S7.** SEM image of a synthetic hectorite (Sumecton SWF) with the magnification of 50k.



**Figure S8.** Schematic illustration and photographs showing the dimension of specimen for the “shear lap test”.



**Figure S9.** Relationship between the shear load and the displacement of 0.36 (black) and 1.80 (red) PVA-SWF films.

**Table S1** Weights of the films before and after the soaking in water for 24 h

Weight of film (mg)	SWF	PVA-SWF weight ratio					PVA
		0.36	1.08	1.80	4	5	
Before	777.8	759.7	782.9	767.8	735.8	731.6	770.9
After	773.6	759.7	782.8	767.8	735.2	730.8	768.4