

Supplementary Information

A fluorescent colorimetric vaniline di-Schiff base chemosensor for detection of Cu(II) and Isolation of trinuclear Cu(II)-dihydrazide

Memansahu, Amit Kumar Manna and Goutam K. Patra*

Department of Chemistry, Guru Ghasidas Vishwavidyalaya, Bilaspur

(C.G)

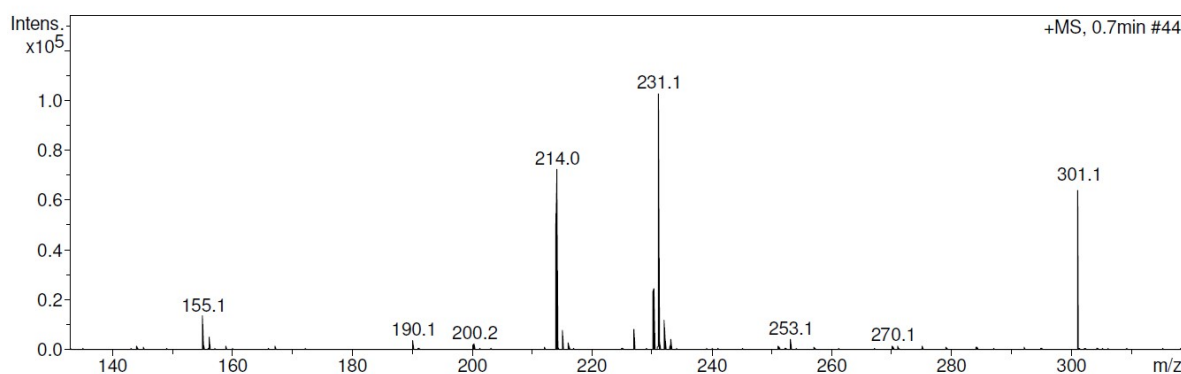


Fig. S1. ESI-Mass Spectra of H₂L.

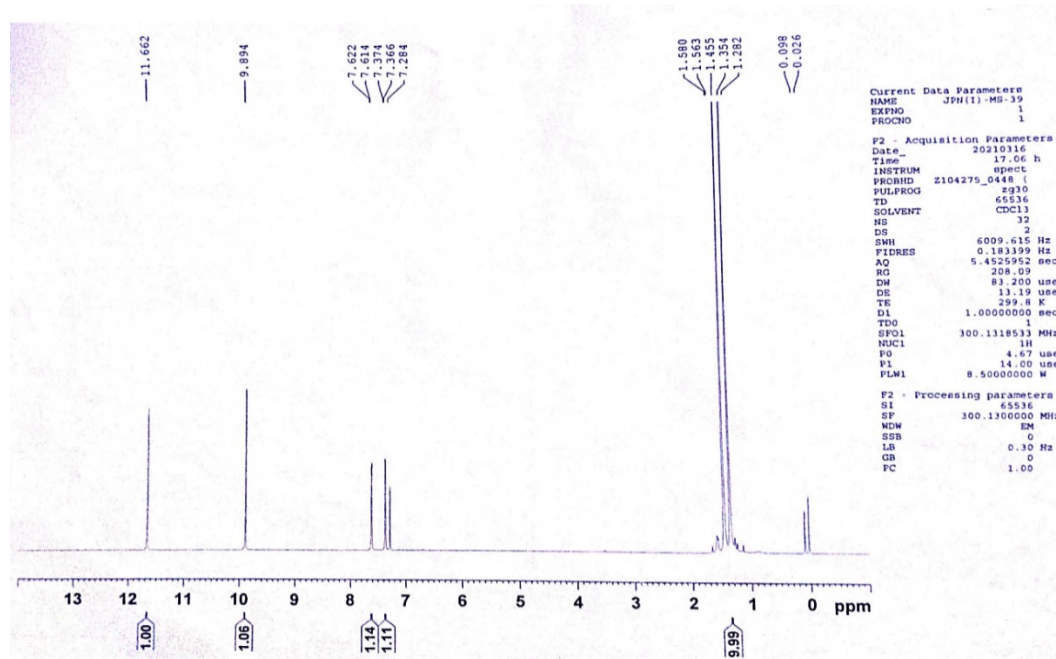


Fig. S2. ¹H NMR Spectra of L in CDCl₃.

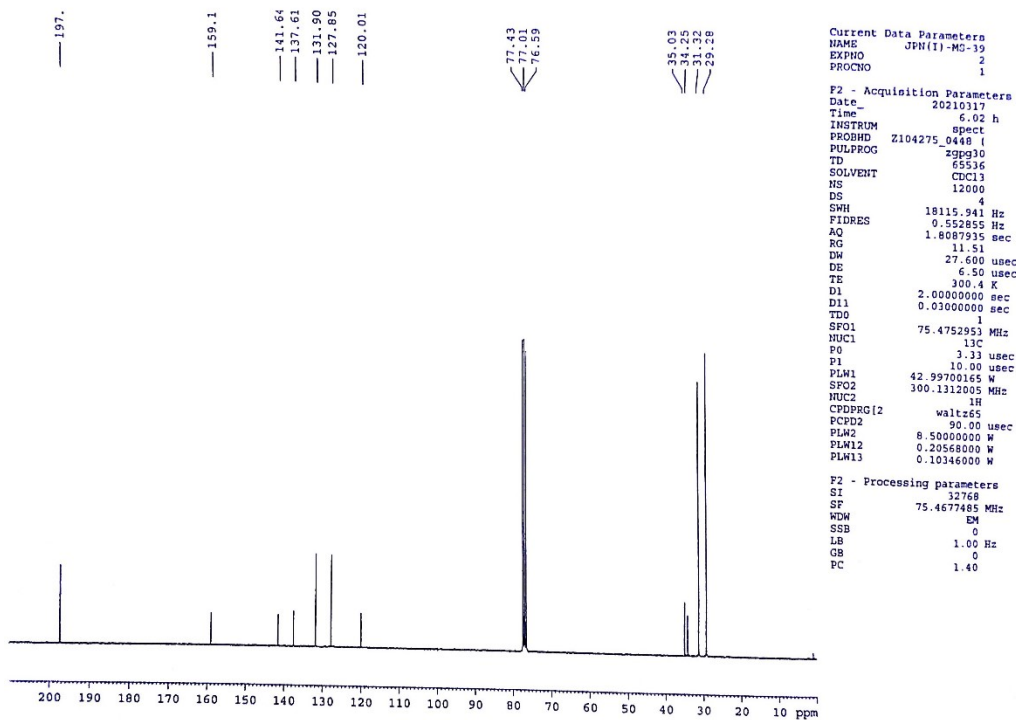


Fig. S3. ^{13}C -NMR Spectra of L in CDCl_3 .

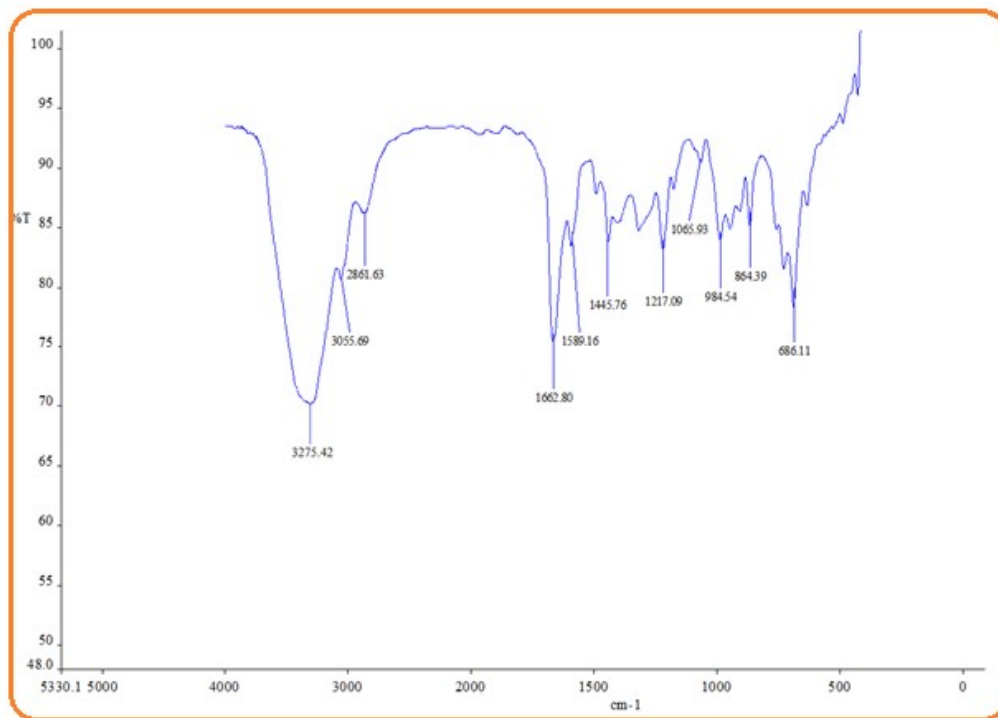


Fig. S4. FTIR spectra of L.

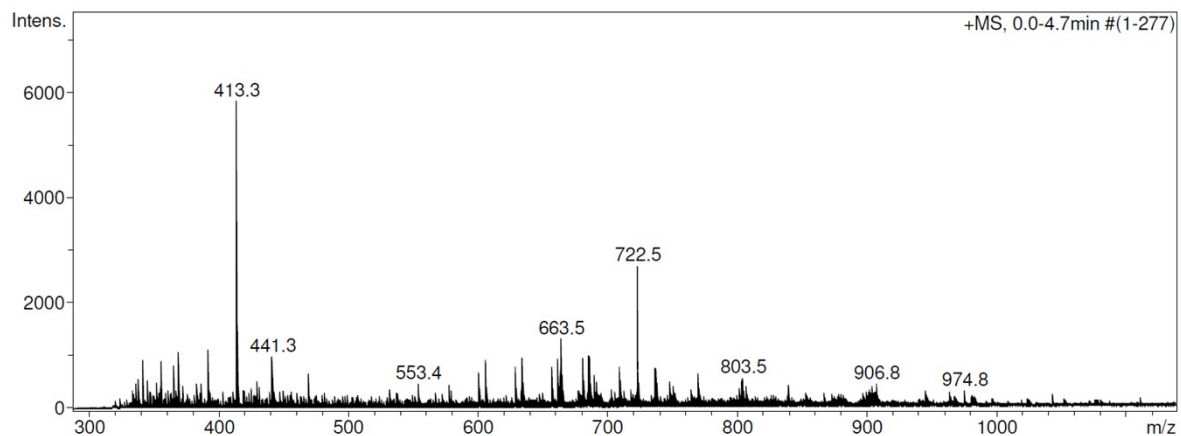


Fig. S5. ESI-Mass Spectra of L+ Cu²⁺ adduct (1).

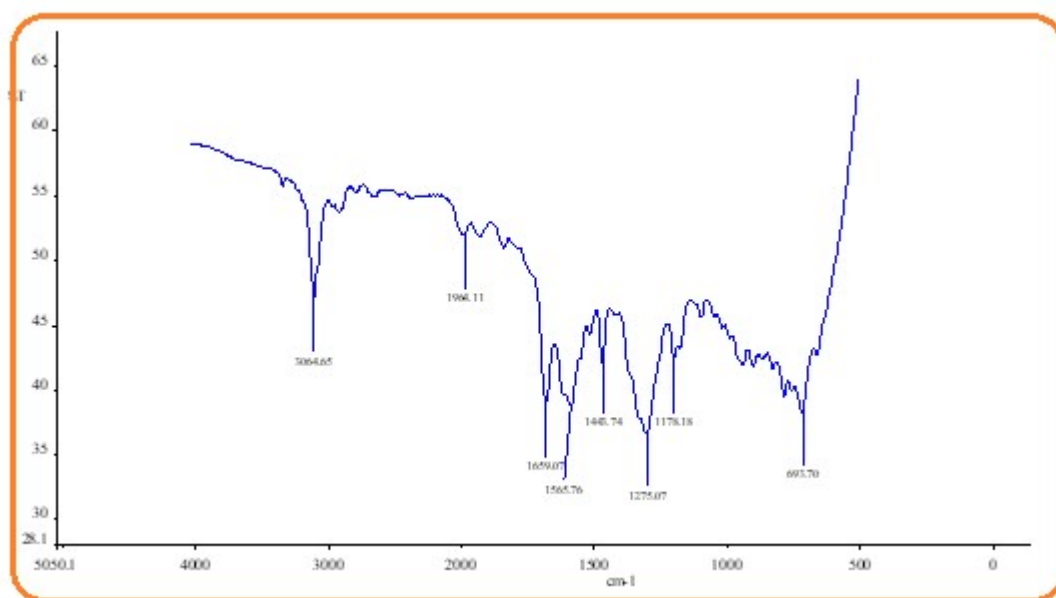


Fig. S6. FTIR Spectra of L+ Cu²⁺ adduct (1).

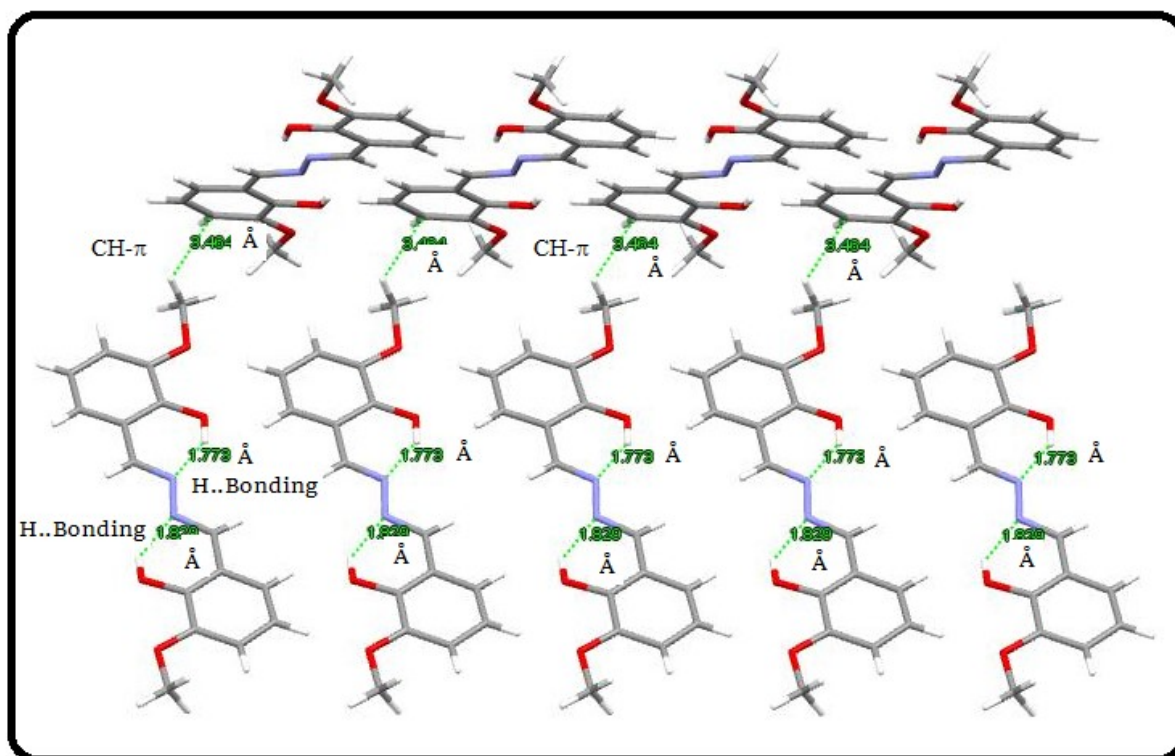


Fig. S7. H-bonding (distances 1.773 \AA and 1.829 \AA) and $CH-\pi$ stacking interactions (distance 3.464 \AA) in the crystal structure of H_2L .

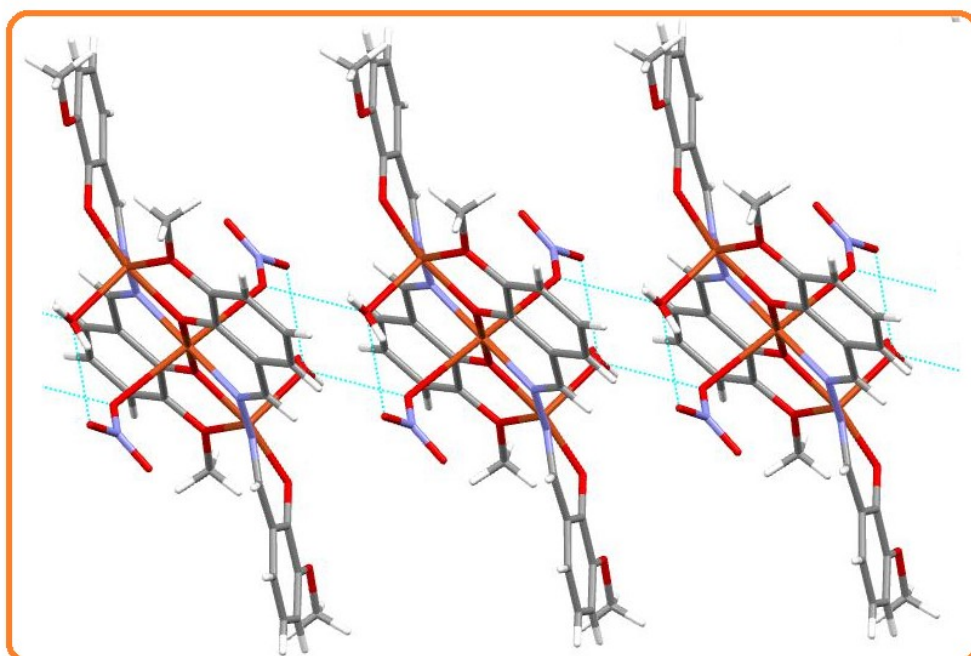


Fig. S8. $\pi-\pi$ stacking interactions in the crystal structure of **1**.

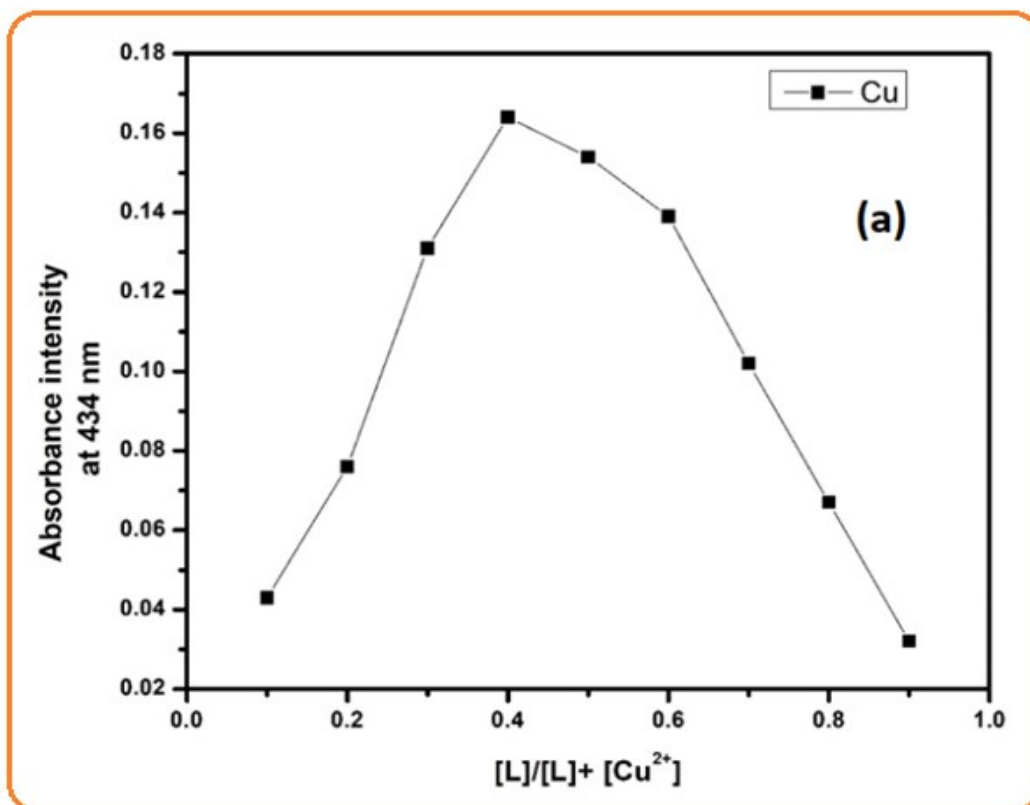


Fig. S9. Job's plot measurements

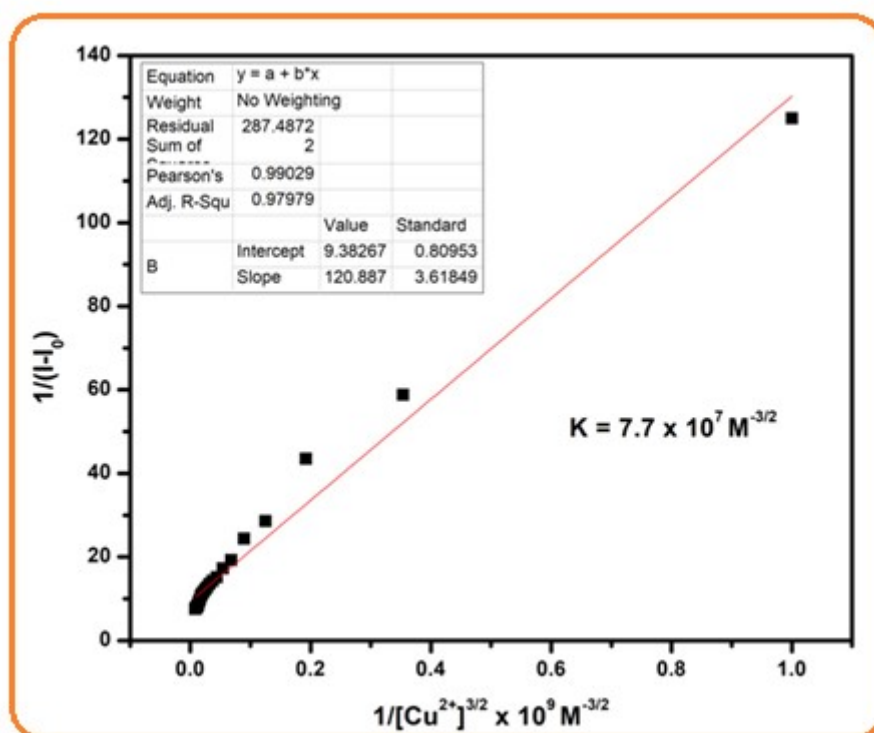


Fig. S10. Stability constant of L-Cu²⁺