

Supporting Information

Integrated Proteomic and Metabolomic Analyses of the Mitochondrial Neurodegenerative Disease MELAS

Haorong Li¹, Martine Uittenbogaard², Ryan Navarro¹, Mustafa Ahmed¹, Andrea Gropman³,
Anne Chiamarello², Ling Hao^{1†}

¹Department of Chemistry, The George Washington University, Science and Engineering Hall,
800 22nd St., NW, Washington, DC, 20052, USA

²Department of Anatomy and Cell Biology, George Washington University School of Medicine
and Health Sciences, Washington, DC 20037, USA

³Division of Neurogenetics and Neurodevelopmental Pediatrics, Children's National Medical
Center, Washington, DC 20010, USA

† Corresponding author

Ling Hao

Assistant Professor of Chemistry

Tel.: +1 (202) 994-4492

E-mail: linghao@gwu.edu

TABLE OF CONTENTS

- **Figure S1.** Metabolomics principal component analysis for each HPLC-MS mode (RP and HILIC, polar and nonpolar metabolites, positive and negative electrospray ionization).
- **Figure S2.** Metabolomics volcano plots for each HPLC-MS mode.
- **Figure S3.** Example HPLC-MS chromatograms of fibroblast metabolites.
- **Table S1.** Merged protein IDs and quantification results from DDA and DIA datasets.
- **Table S2.** Merged Metabolite IDs and quantification results from all HPLC-MS modes.
- **Table S3.** Joint pathway analysis results.

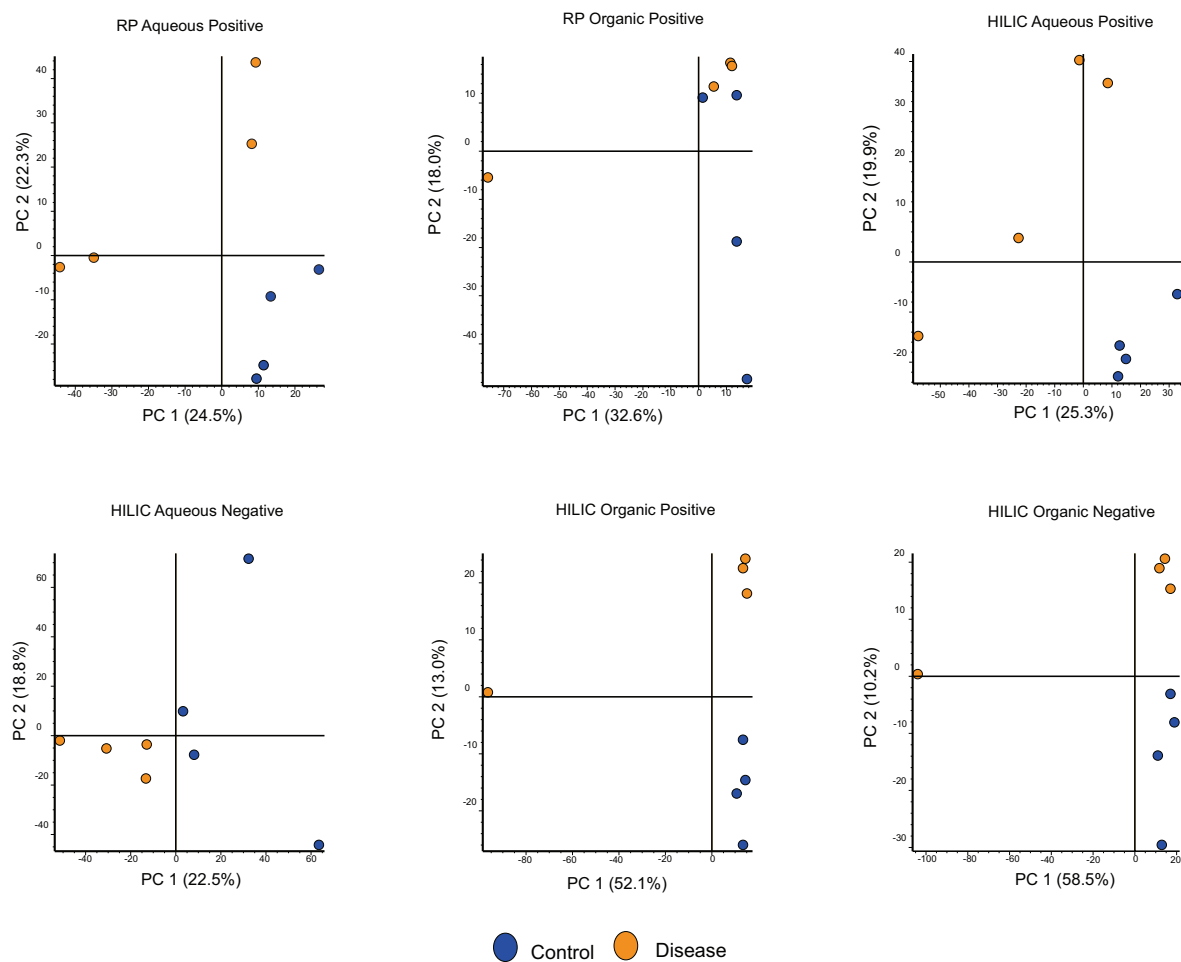


Figure S1. Metabolomics principal component analysis for each HPLC-MS mode (RP and HILIC, polar and nonpolar metabolites, positive and negative electrospray ionization).

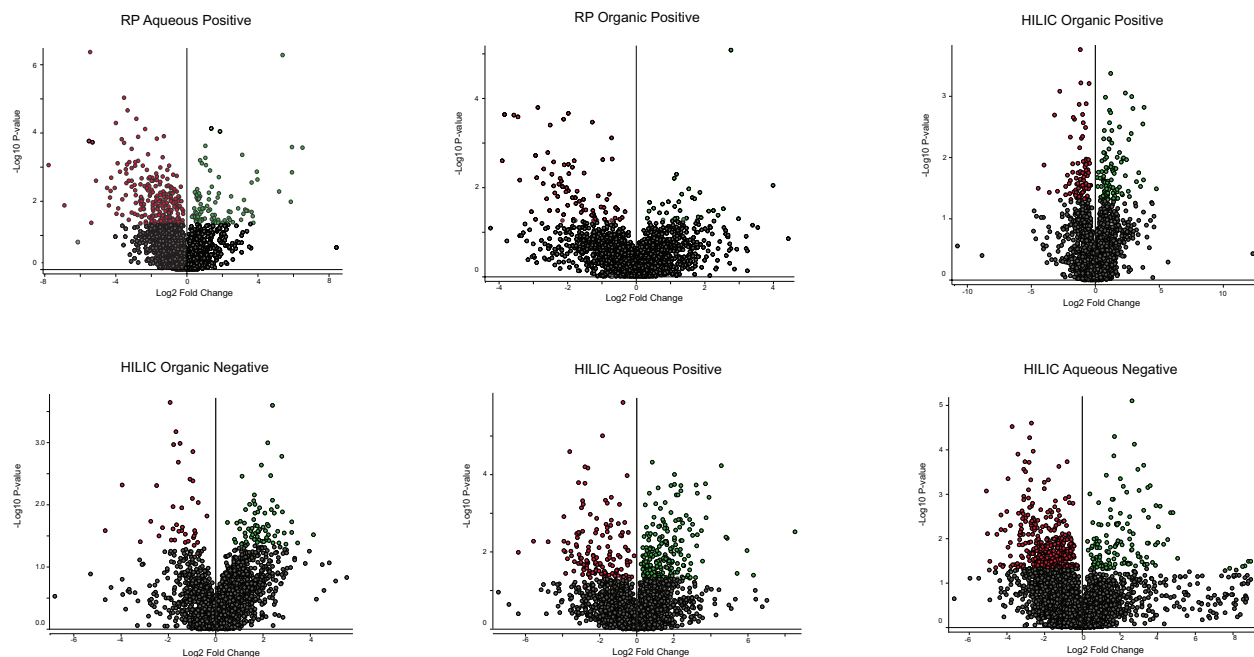


Figure S2. Metabolomics volcano plots for each HPLC-MS mode. Aqueous represents the polar fraction from the water/methanol layer, and organic represents the nonpolar fraction from the chloroform layer.

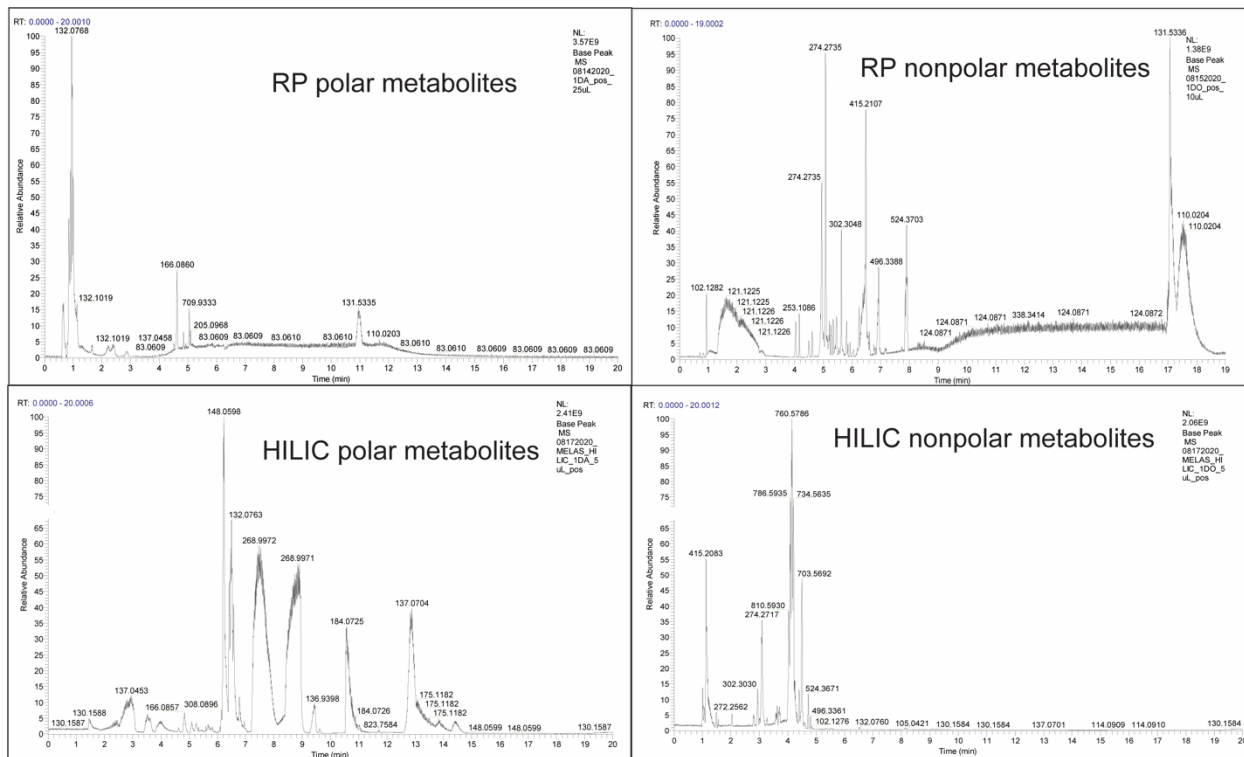


Figure S3. Example HPLC-MS chromatograms of fibroblast metabolites.