

Supporting Information:

Three-steps method with self-sacrificial Co to prepare uniform 5 nm-scale Pt catalyst for the oxygen reduction reaction

Donggang Li^{*a}, Yanlong Gong^a, Gen Li^b, Xiao Lyu^{*b}, Zhenqing Dai^c, and Qiang Wang^d

^a School of Metallurgy, Northeastern University, Shenyang 110004, PR China

^b School of Materials Science and Engineering, Shenyang Ligong University, Shenyang, 110159, PR China

^c College of Sciences, Northeastern University, Shenyang 110004, PR China

^d Key Laboratory of Electromagnetic Processing of Materials, Northeastern University, Shenyang 110004, PR China

*Corresponding author E-mail: lidonggang@smm.neu.edu.cn, lyux@sylu.edu.cn

Table of Contents

Fig. S1: SEM images of (a) CMK-3 and (b) CMK-3-D.

Fig. S2: EDS elemental mapping results for CoPt/CMK-3-D catalyst.

Fig. S3: EDX mapping result for CoPt/CMK-3-D catalyst.

Fig. S4: LSV curves of the CMK-3 and CMK-3-D.

Fig. S5: LSV curves of CoPt/CMK-3-D catalyst synthesized with different time by the pulse electrodeposition.

Fig. S6: (a) CV curves and (b) ECSA of CoPt/CMK-3-D catalyst before and after stability test.

Fig. S7: (a) Performance comparison of LSV for Pt/CMK-3-D catalysts after accelerated durability test. (b) Comparisons of MA and SA of Pt/CMK-3-D before and after accelerated durability test.

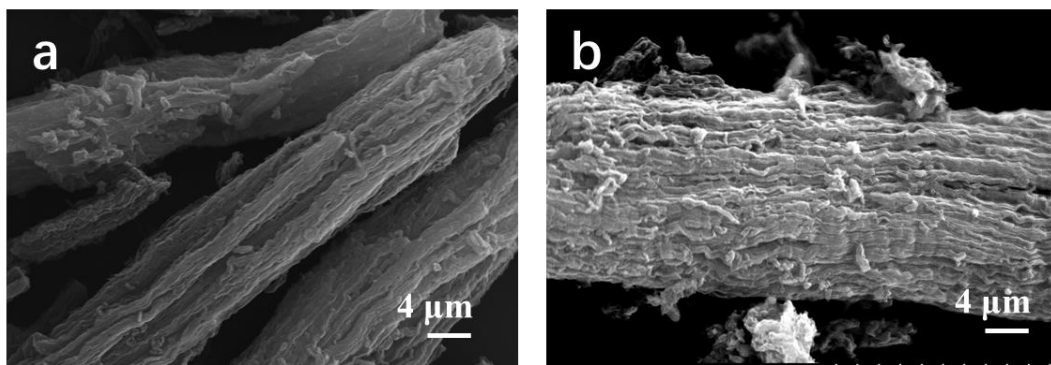


Fig. S1. SEM images of (a) CMK-3 and (b) CMK-3-D.

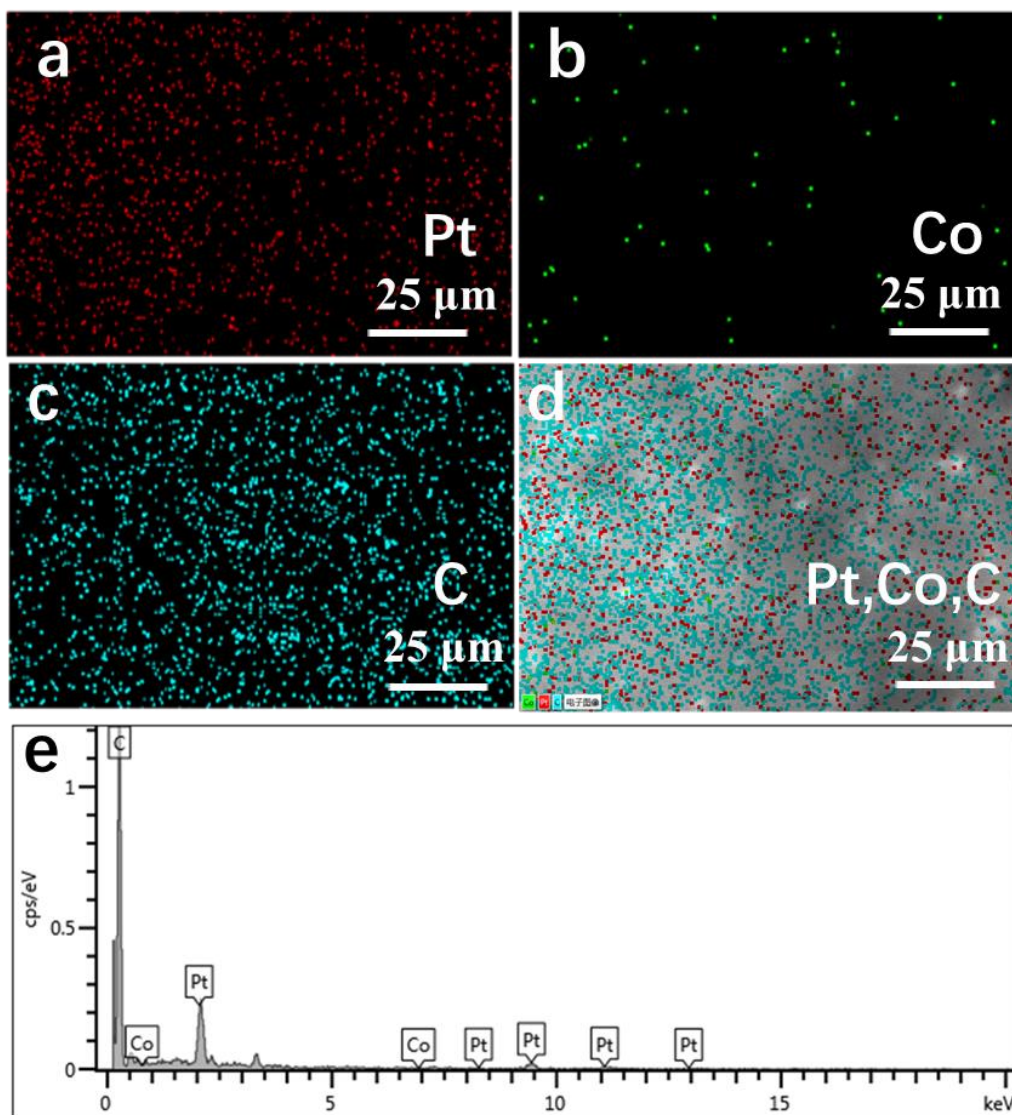


Fig. S2. EDS elemental mapping results for CoPt/CMK-3-D catalyst.

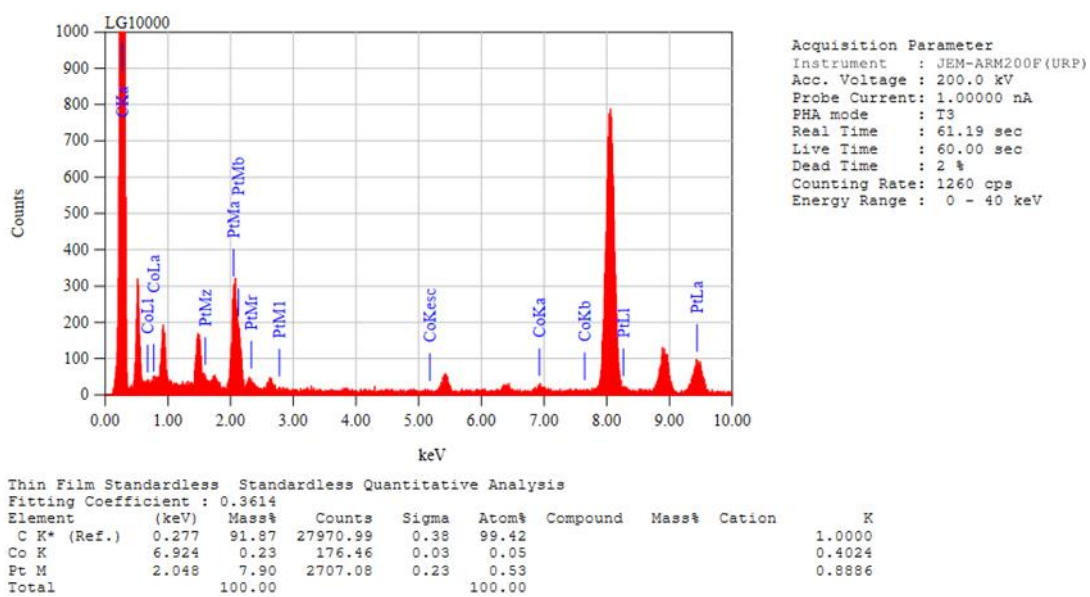


Fig. S3. EDX mapping result for CoPt/CMK-3-D catalyst.

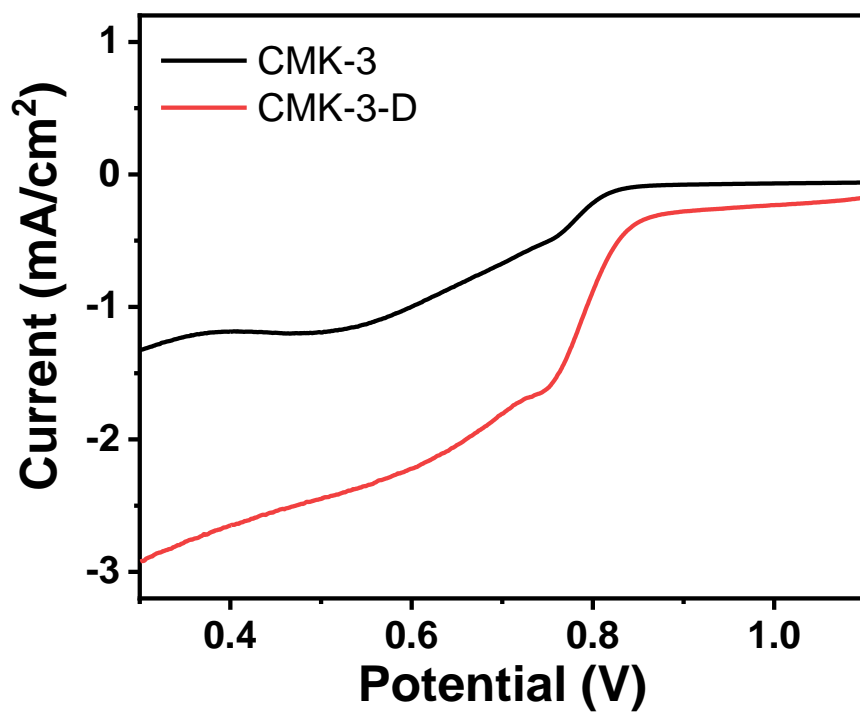


Fig. S4. LSV curves of the CMK-3 and CMK-3-D.

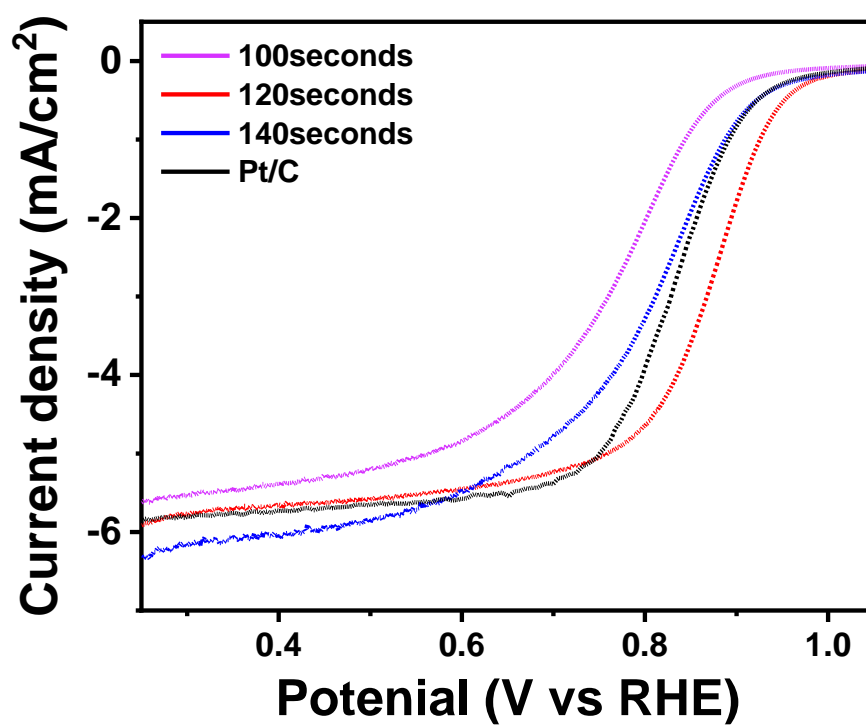


Fig. S5. LSV curves of CoPt/CMK-3-D catalyst synthesized with different time by the pulse electrodeposition.

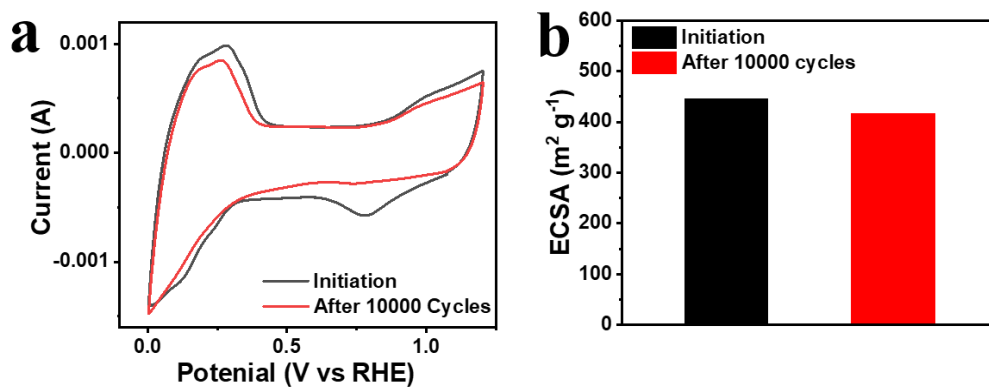


Fig. S6. (a) CV curves and (b) ECSA of CoPt/CMK-3-D catalyst before and after stability test.

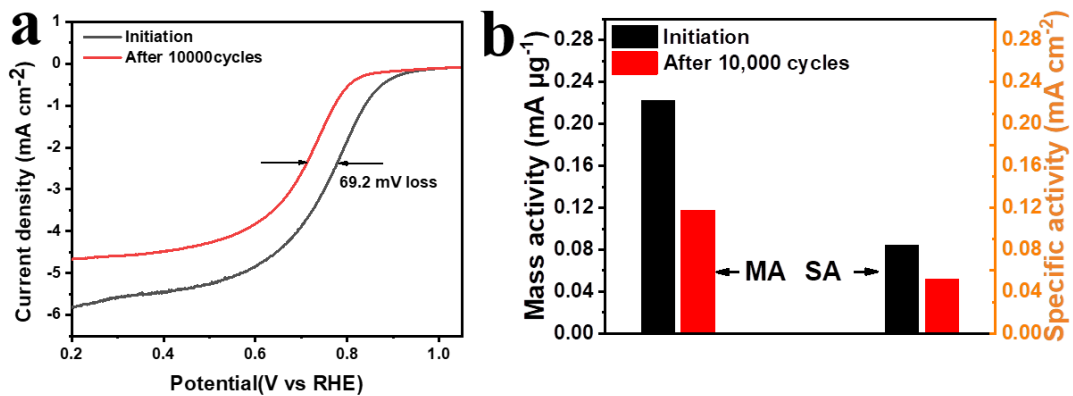


Fig. S7. (a) Performance comparison of LSV for Pt/CMK-3-D catalysts after accelerated durability test. (b) Comparisons of MA and SA of Pt/CMK-3-D before and after accelerated durability test.