

Supporting Information

Catalyst-free and multicomponent synthesis of 3-aminoalkylated indoles via Mannich-type reaction: multitargeted anticancer, tyrosinase and α -glucosidase inhibitory activities

Thi-Kim-Chi Huynh,^{a,b} Kim-Khanh-Huy Ngo,^c Hoang-Phuc Nguyen,^{a,c} Hoai-Khanh Dang,^c
Van-Trung Phung,^d Khac-Minh Thai,^e Thi-Kim-Dung Hoang^{*a,b}

^aInstitute of Chemical Technology – VAST, 1A Thanh Loc 29 Str., Dist. 12, Ho Chi Minh City, Vietnam

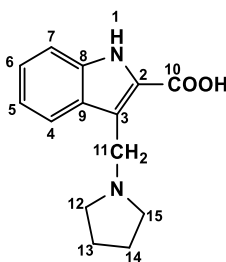
^bGraduate University of Science and Technology – VAST, 18 Hoang Quoc Viet Str., Cau Giay Dist., Hanoi, Vietnam

^cTon Duc Thang University, 19 Nguyen Huu Tho Str., Dist. 7, Ho Chi Minh City, Vietnam

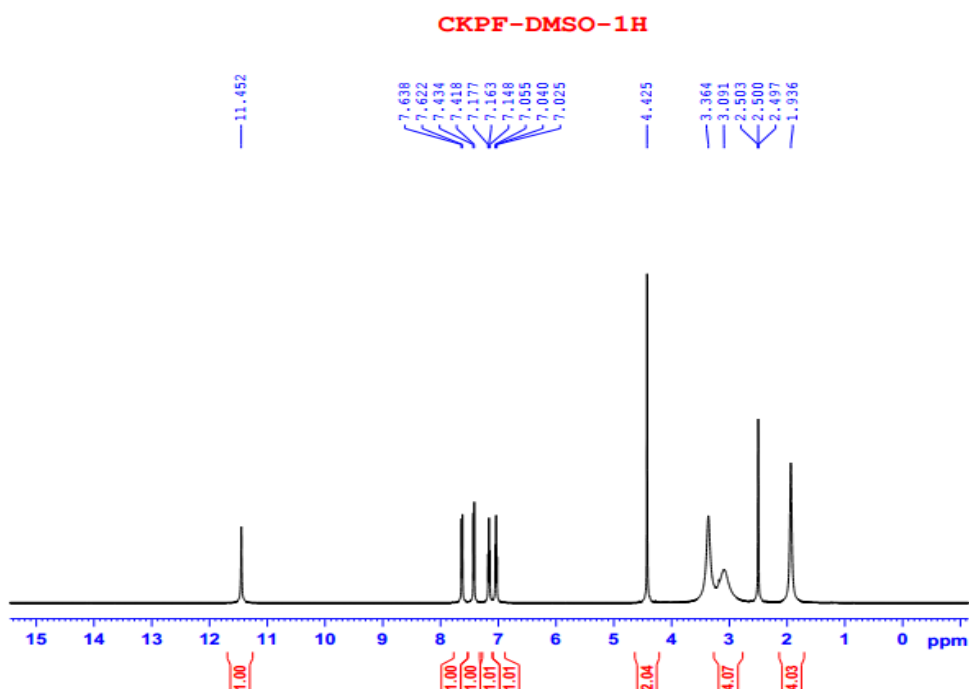
^dCenter for Research and Technology Transfer – VAST, 18 Hoang Quoc Viet Str., Cau Giay Dist., Hanoi, Vietnam

^eDepartment of Medicinal Chemistry, Faculty of Pharmacy, University of Medicine and Pharmacy at Ho Chi Minh City – 41-43 Dinh Tien Hoang Str., Dist. 1, Ho Chi Minh City, Vietnam

3-(pyrrolidin-1-ylmethyl)-1H-indole-2-carboxylic acid (**4a**)

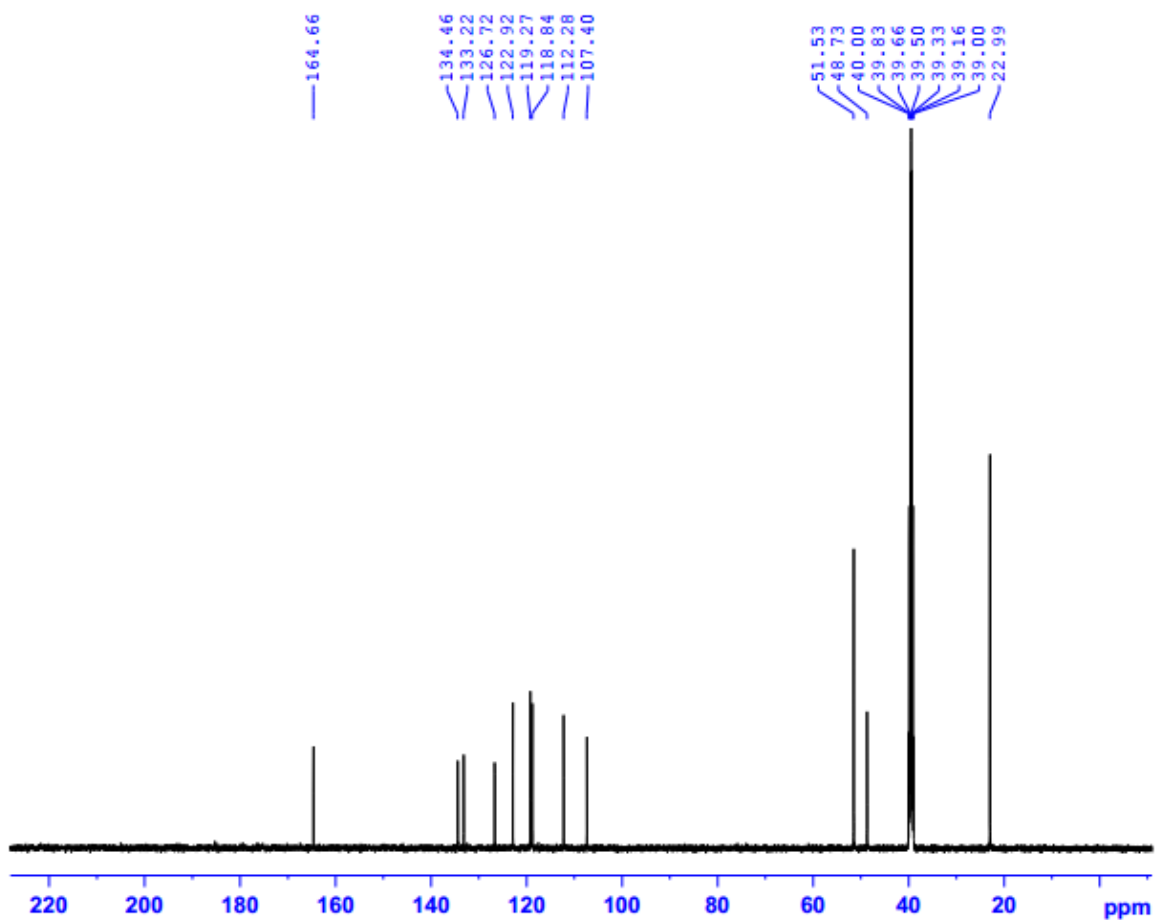


¹H-NMR:



¹³C-NMR:

CKPF-DMSO-C13CPD



ESI-HRMS:

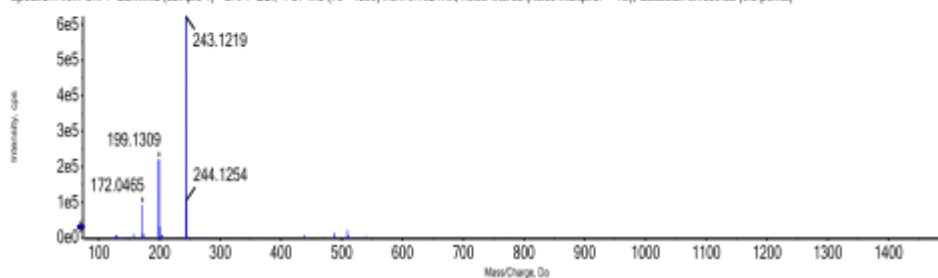
ANALYSIS REPORT

Injection details

<i>Sample name</i>	CKPF	<i>Vial position</i>	1
<i>Sample file name</i>	SER_wiff2 - CHI	<i>Inject volume</i>	5.00
<i>Acquisition date</i>	30/11/2018 1:04:54 PM	<i>Acquisition method</i>	ESI_NEG_SCAN
<i>Operator</i>	CB21261708	<i>Instrument name</i>	X500R_QTOF

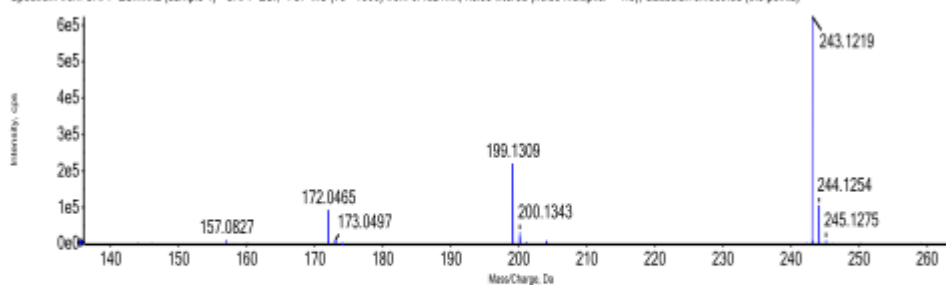
Full mass spectrum

Spectrum from CKPF-ESI.wiff2 (sample 1) - CKPF-ESI, -TOF MS (75 - 1500) from 0.162 min, noise filtered (noise multiplier = 1.5), Gaussian smoothed (0.5 points)



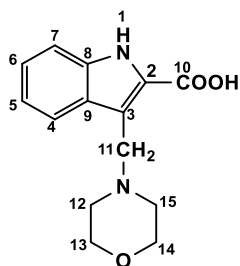
Expanded spectrum

Spectrum from CKPF-ESI.wiff2 (sample 1) - CKPF-ESI, -TOF MS (75 - 1500) from 0.162 min, noise filtered (noise multiplier = 1.5), Gaussian smoothed (0.5 points)

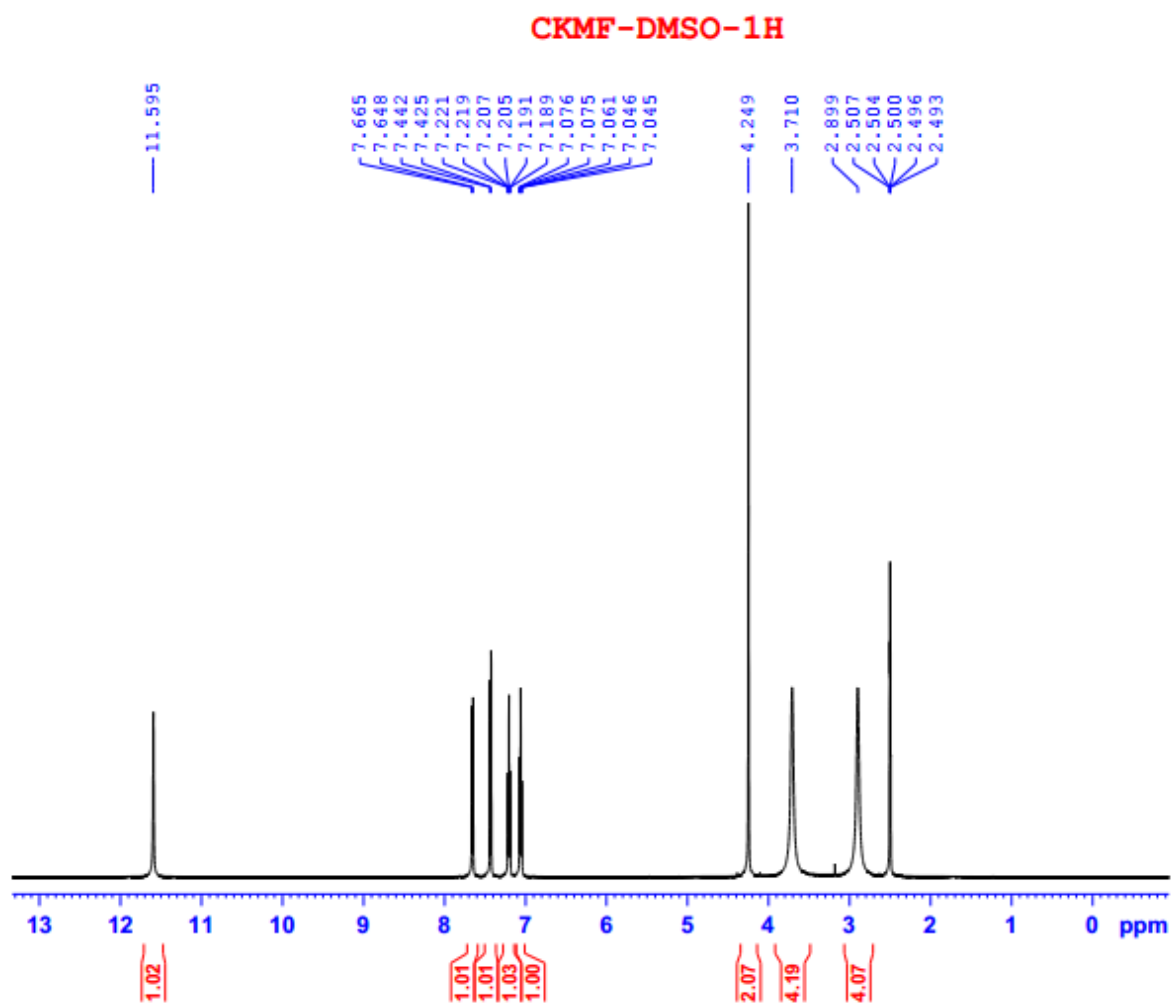


Molecular formula prediction

3-(morpholinomethyl)-1H-indole-2-carboxylic acid (**4b**)

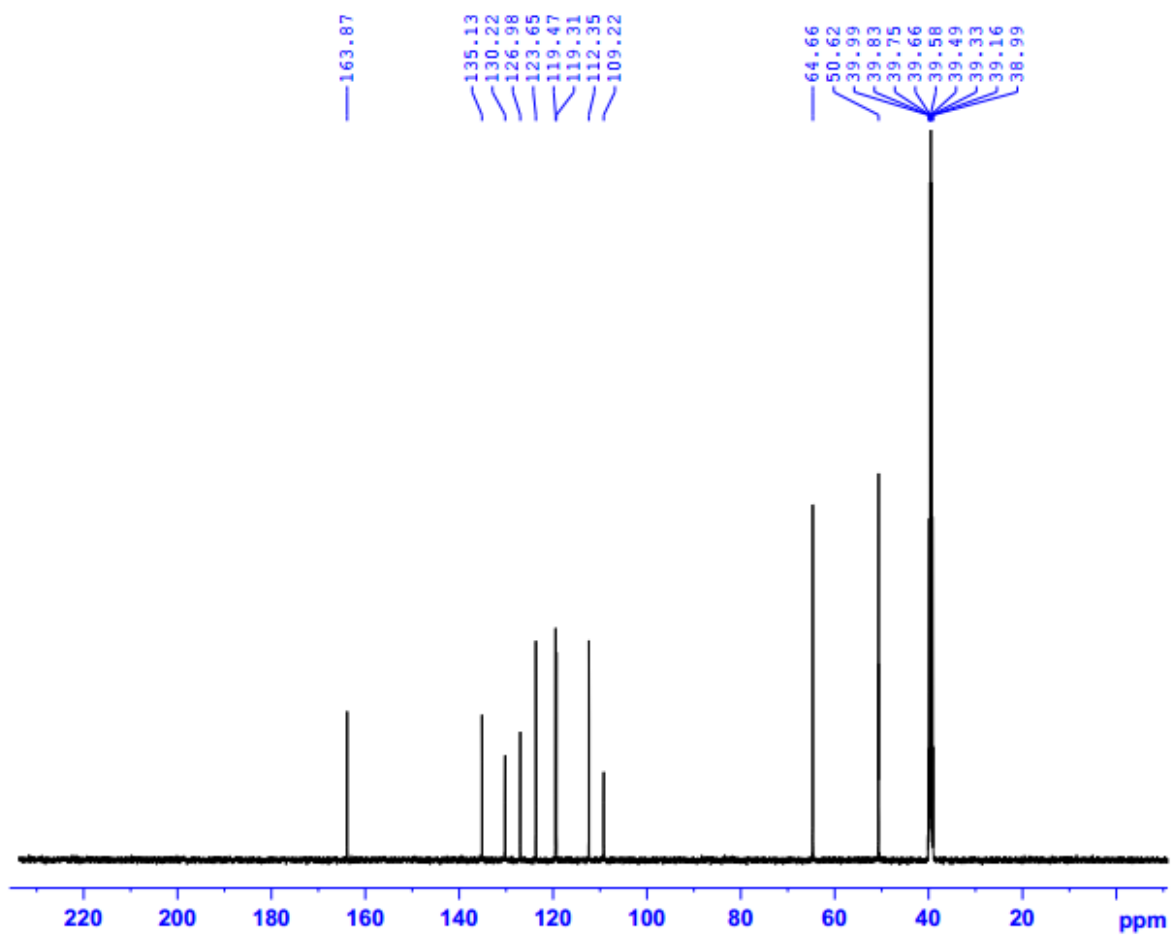


¹H-NMR:



¹³C-NMR:

CKMF-DMSO-C13CPD



ESI-HRMS:

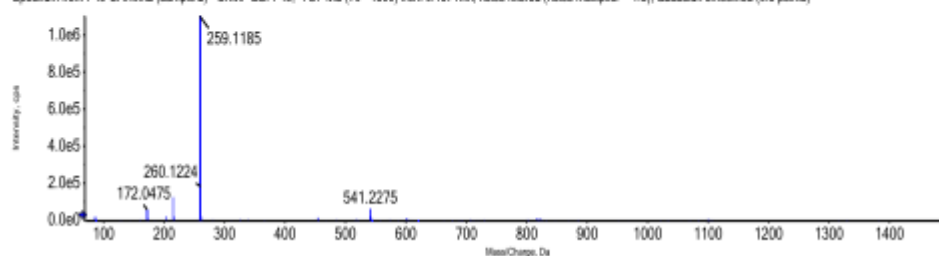
ANALYSIS REPORT

Injection details

Sample name	CKMF	Vial position	11
Sample file name	SER. wiff2 - CHI	Inject volume	5.00
Acquisition date	8/1/2019 1:04:54 PM	Acquisition method	ESI_NEG_SCAN
Operator	CB21261708	Instrument name	X500R_QTOF

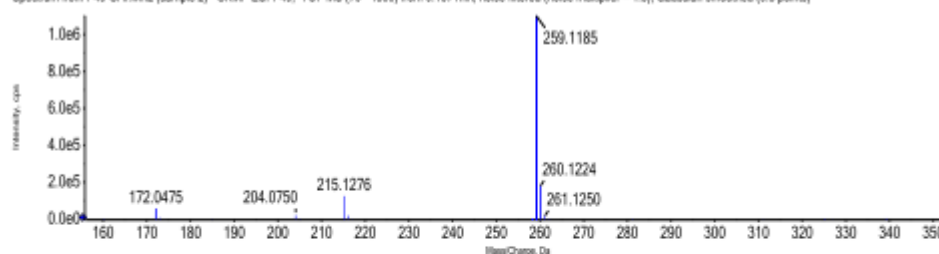
Full mass spectrum

Spectrum from P49-CH1.wiff2 (sample 2) - CKMF-ESI-P49, -TOF MS (70 - 1500) from 0.167 min, noise filtered (noise multiplier = 1.5), Gaussian smoothed (0.5 points)



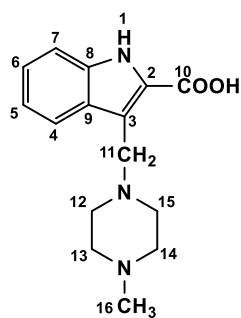
Expanded spectrum

Spectrum from P49-CH1.wiff2 (sample 2) - CKMF-ESI-P49, -TOF MS (70 - 1500) from 0.167 min, noise filtered (noise multiplier = 1.5), Gaussian smoothed (0.5 points)

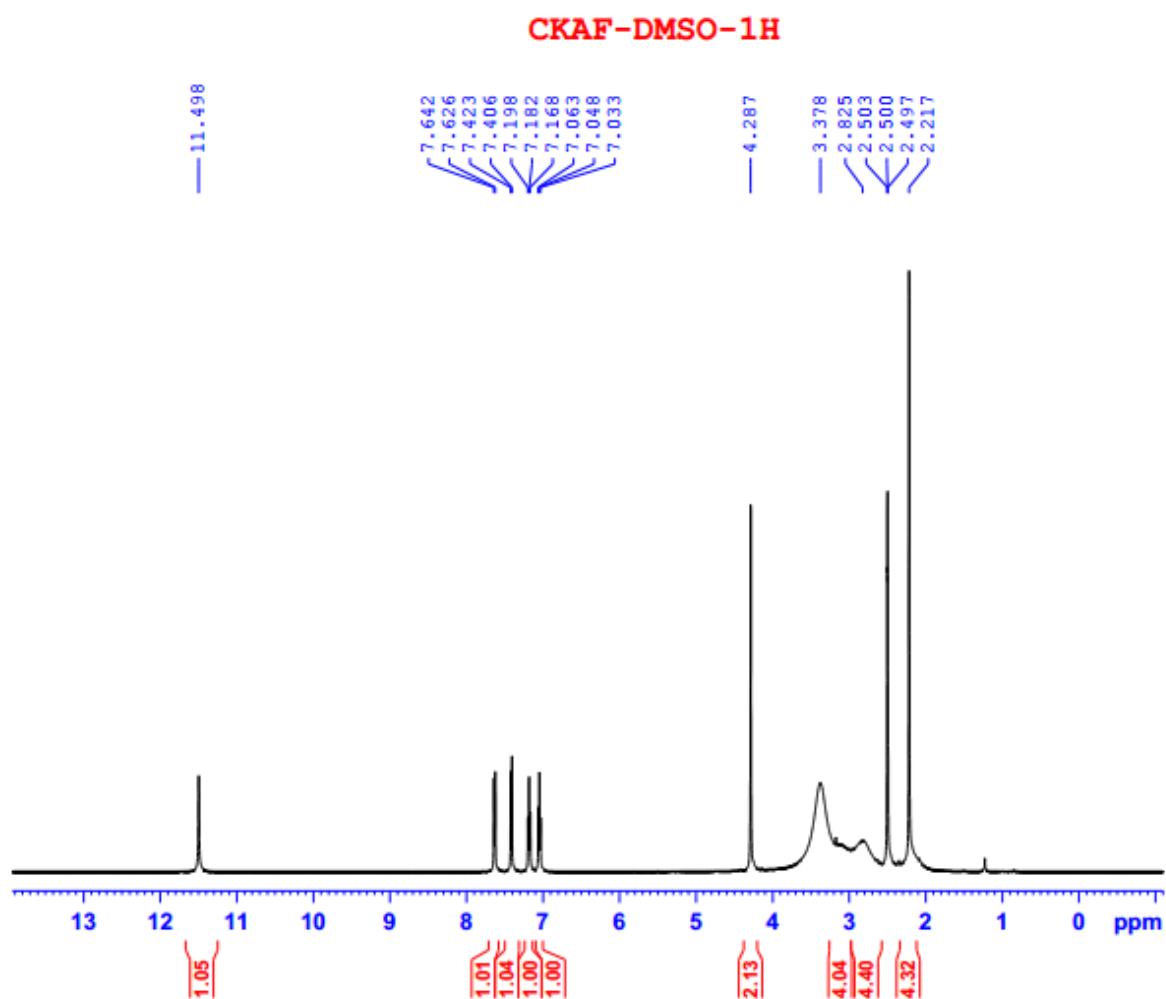


Molecular formula prediction

3-((4-methylpiperazin-1-yl)methyl)-1H-indole-2-carboxylic acid (**4c**)

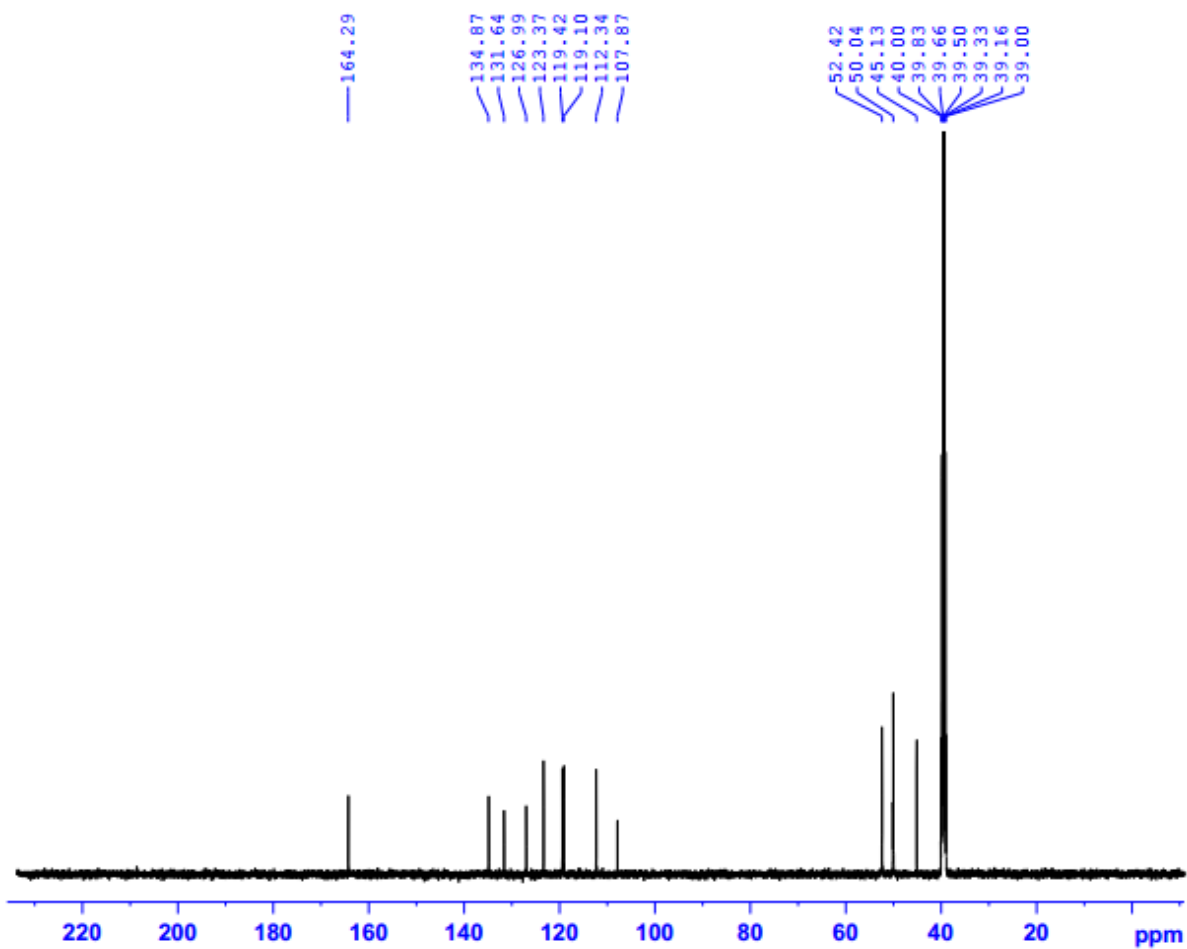


¹H-NMR:



¹³C-NMR:

CKAF-DMSO-C13CPD



ESI-HRMS:

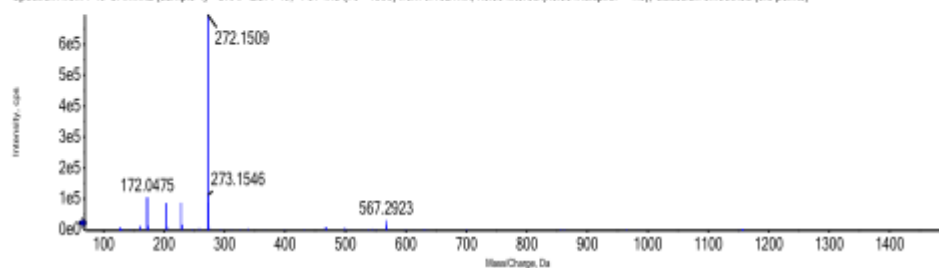
ANALYSIS REPORT

Injection details

Sample name	CKAF	Vial position	13
Sample file name	SER_wiff2 - CHI	Inject volume	5.00
Acquisition date	8/1/2019 1:04:54 PM	Acquisition method	ESI_NEG_SCAN
Operator	CB21261708	Instrument name	X500R QTOF

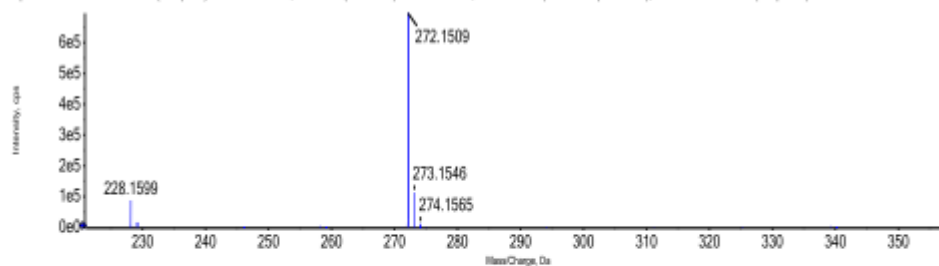
Full mass spectrum

Spectrum from P49-CHI.wiff2 (sample 4) - CKAF-ESI-P49, -TOF MS (70 - 1500) from 0.162 min, noise filtered (noise multiplier = 1.5), Gaussian smoothed (0.5 points)



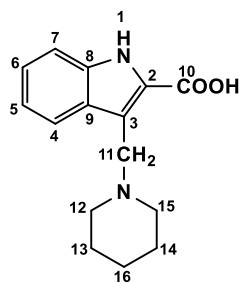
Expanded spectrum

Spectrum from P49-CHI.wiff2 (sample 4) - CKAF-ESI-P49, -TOF MS (70 - 1500) from 0.162 min, noise filtered (noise multiplier = 1.5), Gaussian smoothed (0.5 points)

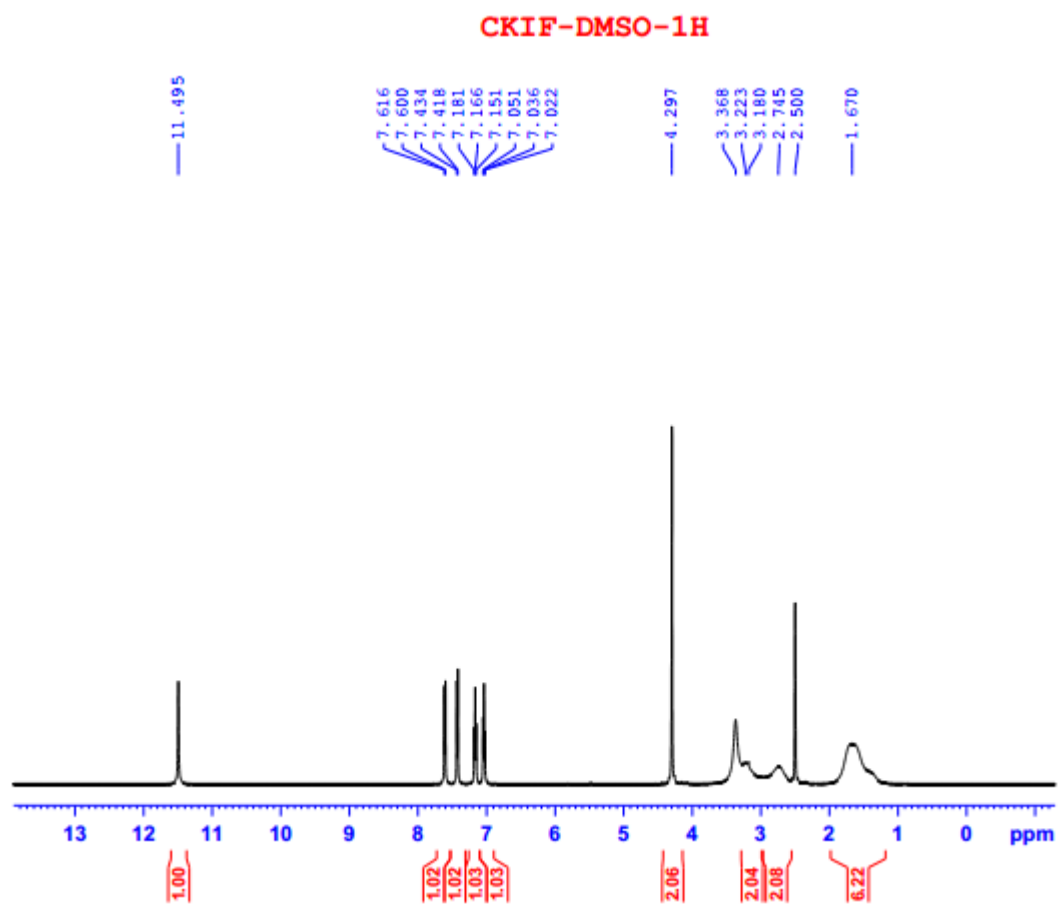


Molecular formula prediction

3-(piperidin-1-ylmethyl)-1H-indole-2-carboxylic acid (**4d**)

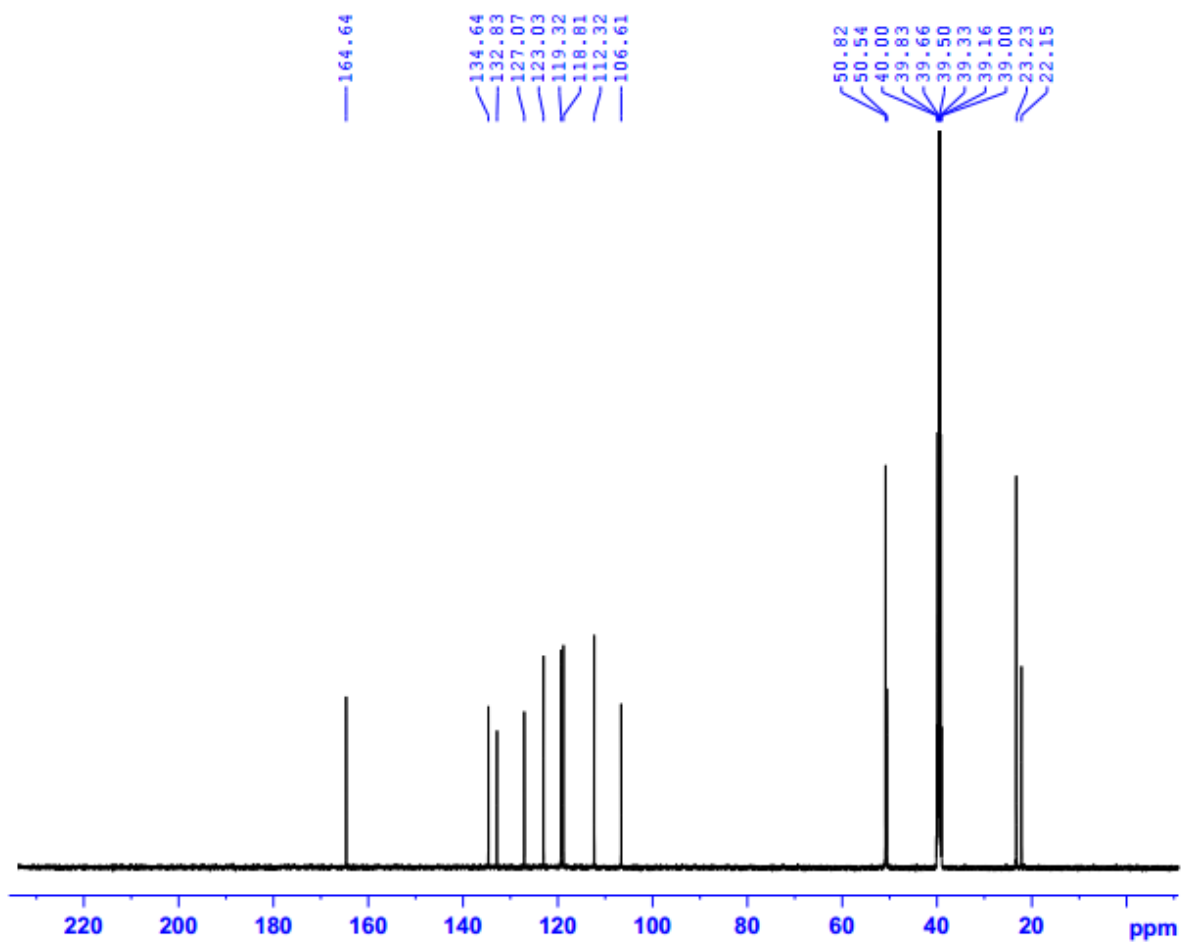


¹H-NMR:



¹³C-NMR:

CKIF-DMSO-C13CPD



ESI-HRMS:

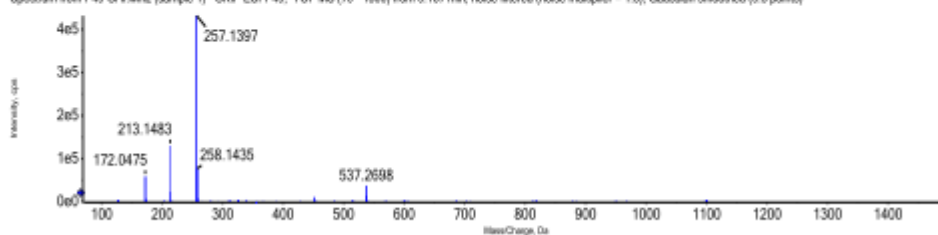
ANALYSIS REPORT

Injection details

<i>Sample name</i>	CKIF	<i>Vial position</i>	10
<i>Sample file name</i>	SER. wiff2 - CHI	<i>Inject volume</i>	5.00
<i>Acquisition date</i>	8/1/2019 1:04:54 PM	<i>Acquisition method</i>	ESI_NEG_SCAN
<i>Operator</i>	CB21261708	<i>Instrument name</i>	X500R_QTOF

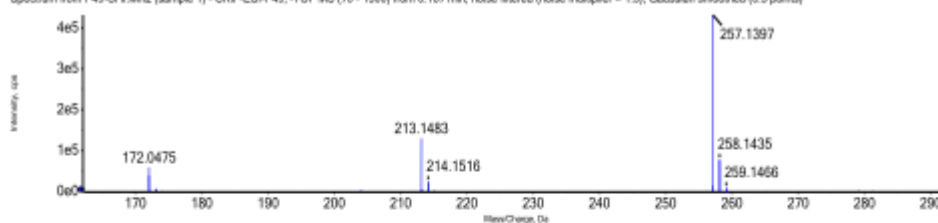
Full mass spectrum

Spectrum from P49-CH1.wiff2 (sample 1) - CKIF-ESI-P49, -TOF MS (70 - 1500) from 0.167 min, noise filtered (noise multiplier = 1.5), Gaussian smoothed (0.5 points)



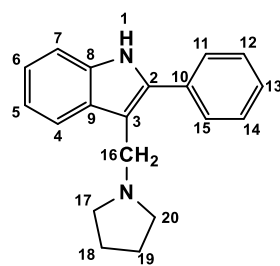
Expanded spectrum

Spectrum from P49-CH1.wiff2 (sample 1) - CKIF-ESI-P49, -TOF MS (70 - 1500) from 0.167 min, noise filtered (noise multiplier = 1.5), Gaussian smoothed (0.5 points)

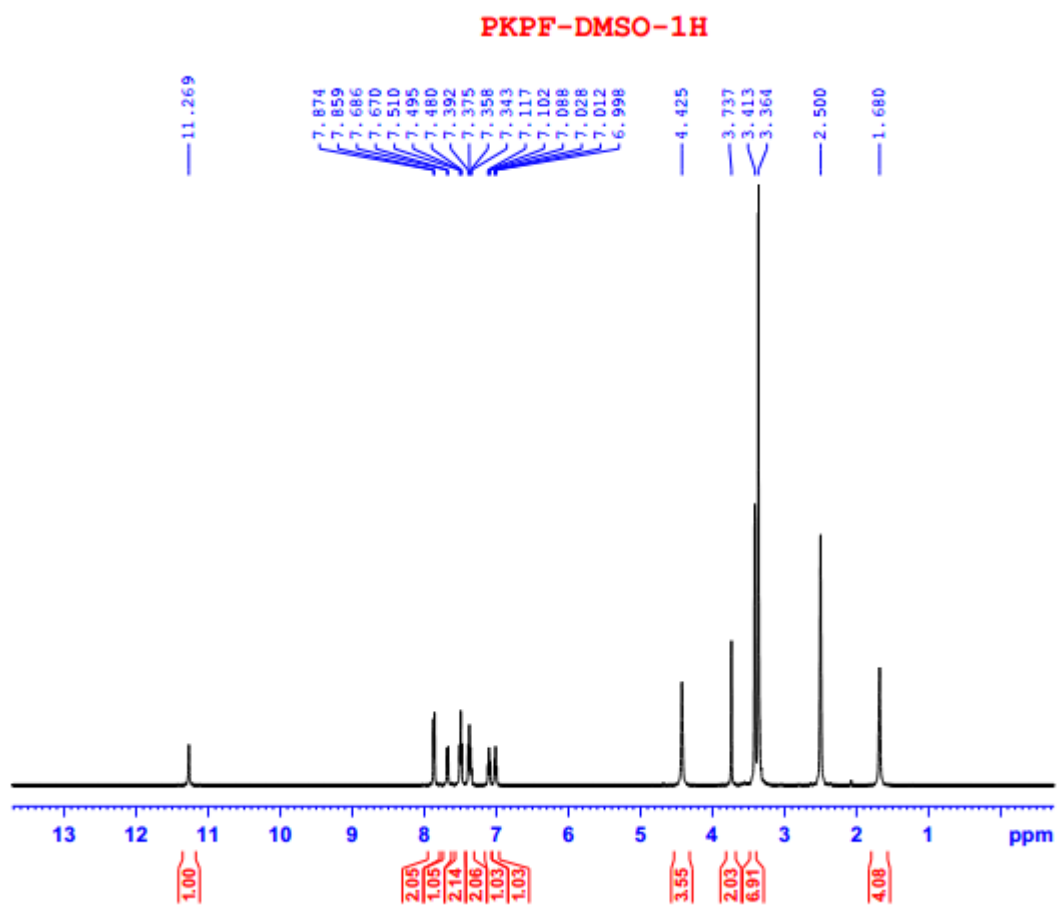


Molecular formula prediction

2-phenyl-3-(pyrrolidin-1-ylmethyl)-1H-indole (4e)

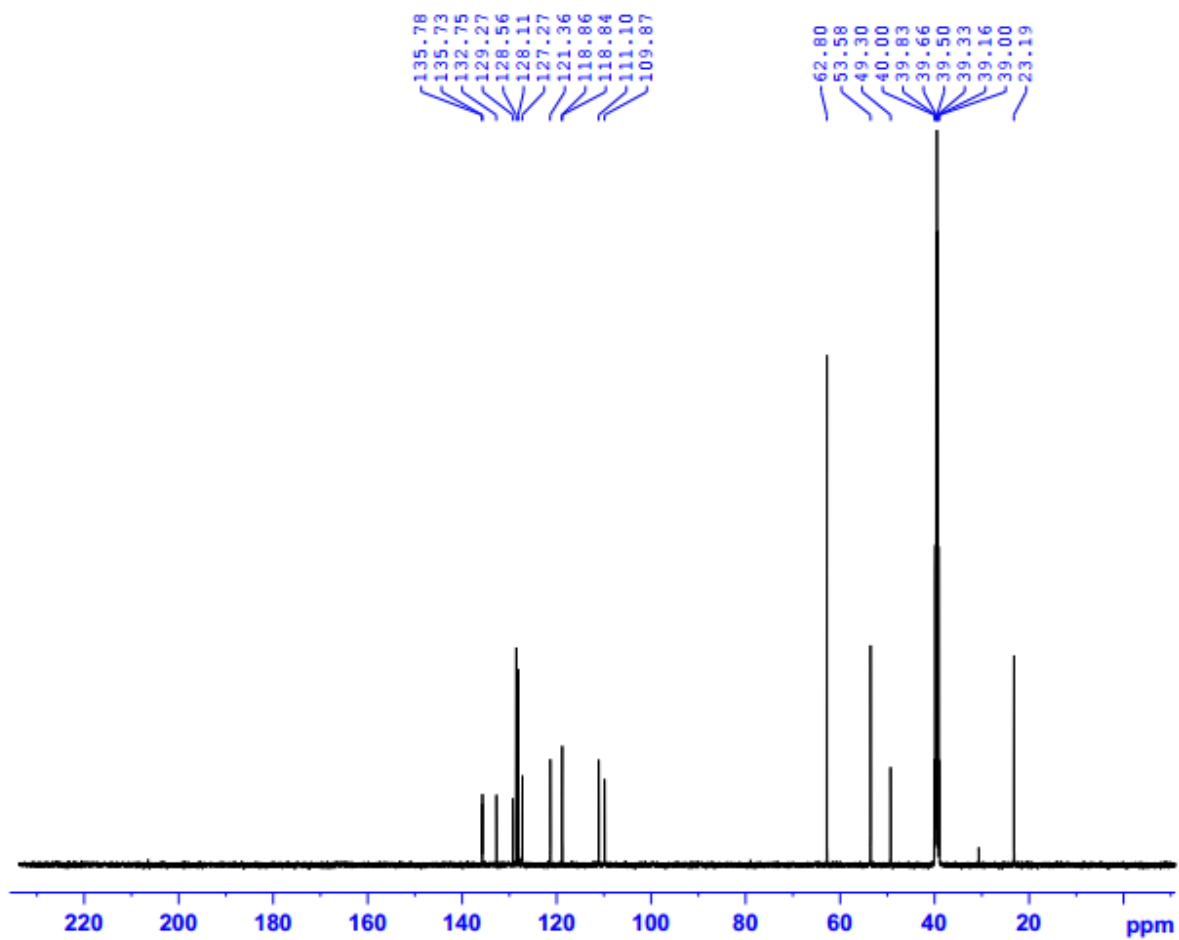


¹H-NMR:



¹³C-NMR:

PKPF-DMSO-C13CPD



ESI-HRMS:

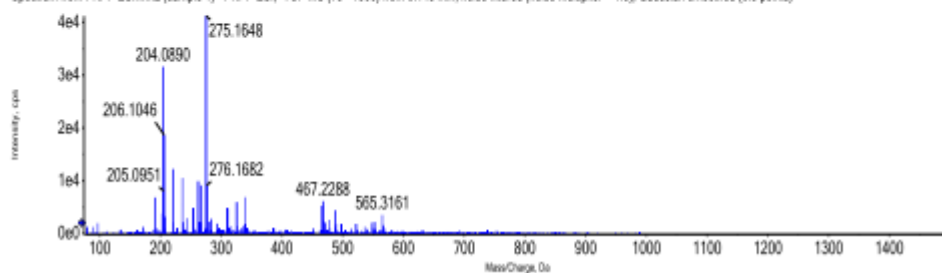
ANALYSIS REPORT

Injection details

Sample name	PKPF	Vial position	9
Sample file name	SER. wiff2 - CHI	Inject volume	5.00
Acquisition date	30/11/2018 1:04:54 PM	Acquisition method	ESI_NEG_SCAN
Operator	CB21261708	Instrument name	X500 _R QTOF

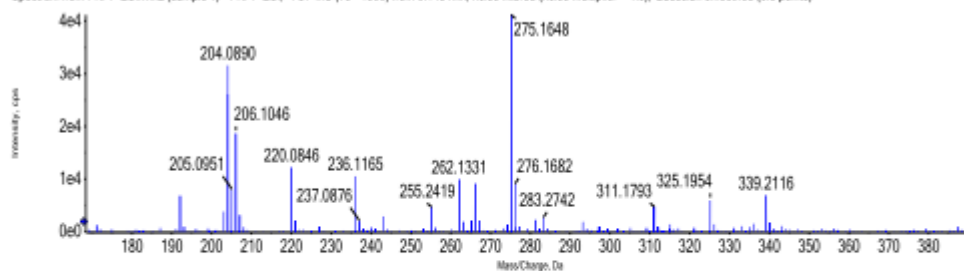
Full mass spectrum

Spectrum from PKPF-ESI.wiff2 (sample 1) - PKPF-ESI -TOF MS (75 - 1500) from 0.148 min, noise filtered (noise multiplier = 1.5), Gaussian smoothed (0.5 points)



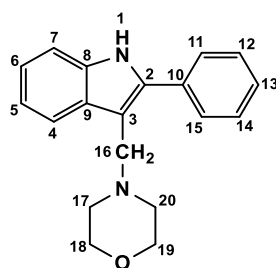
Expanded spectrum

Spectrum from PKPF-ESI.wiff2 (sample 1) - PKPF-ESI -TOF MS (75 - 1500) from 0.148 min, noise filtered (noise multiplier = 1.5), Gaussian smoothed (0.5 points)

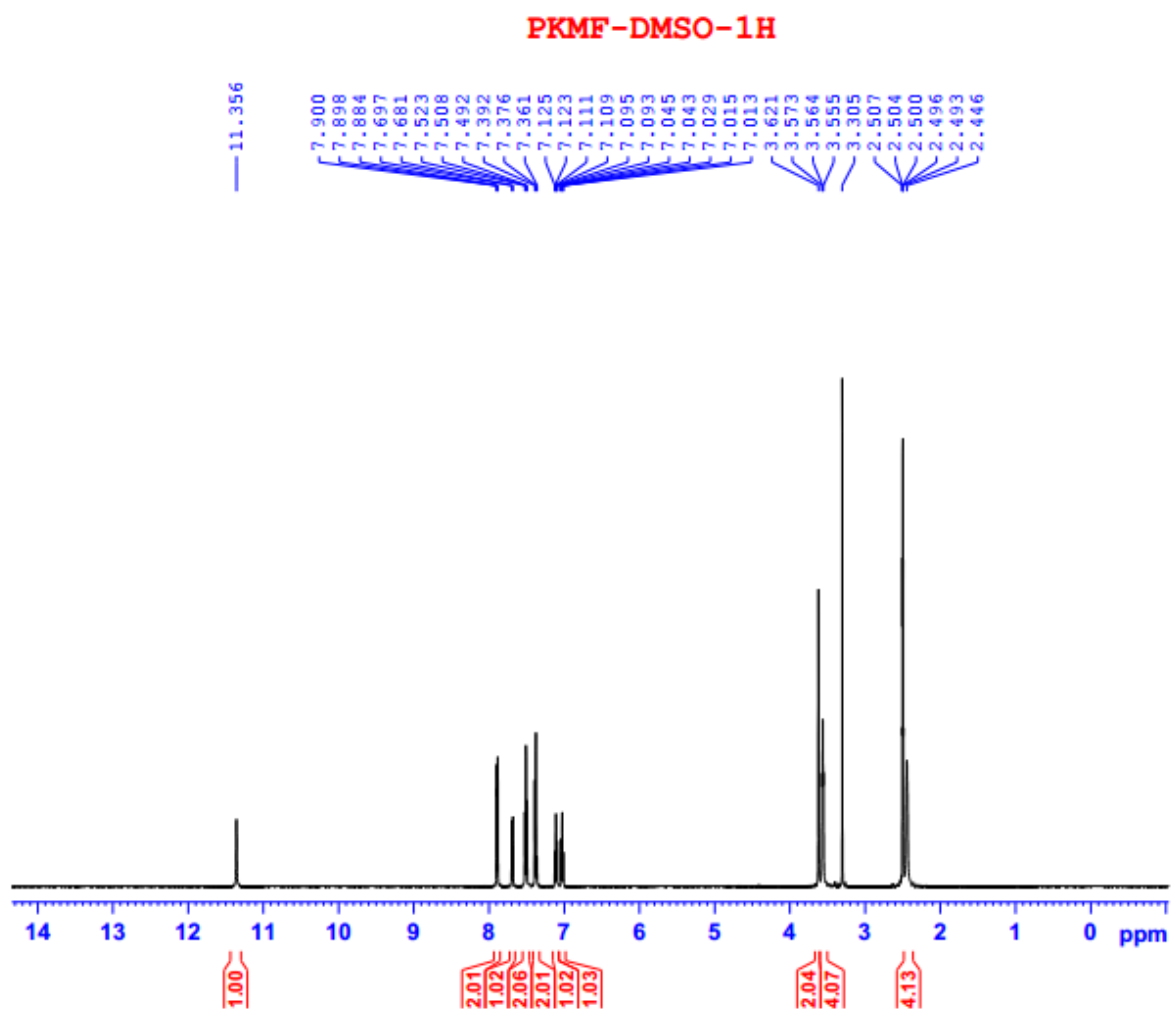


Molecular formula prediction

4-((2-phenyl-1H-indol-3-yl)methyl)morpholine (**4f**)

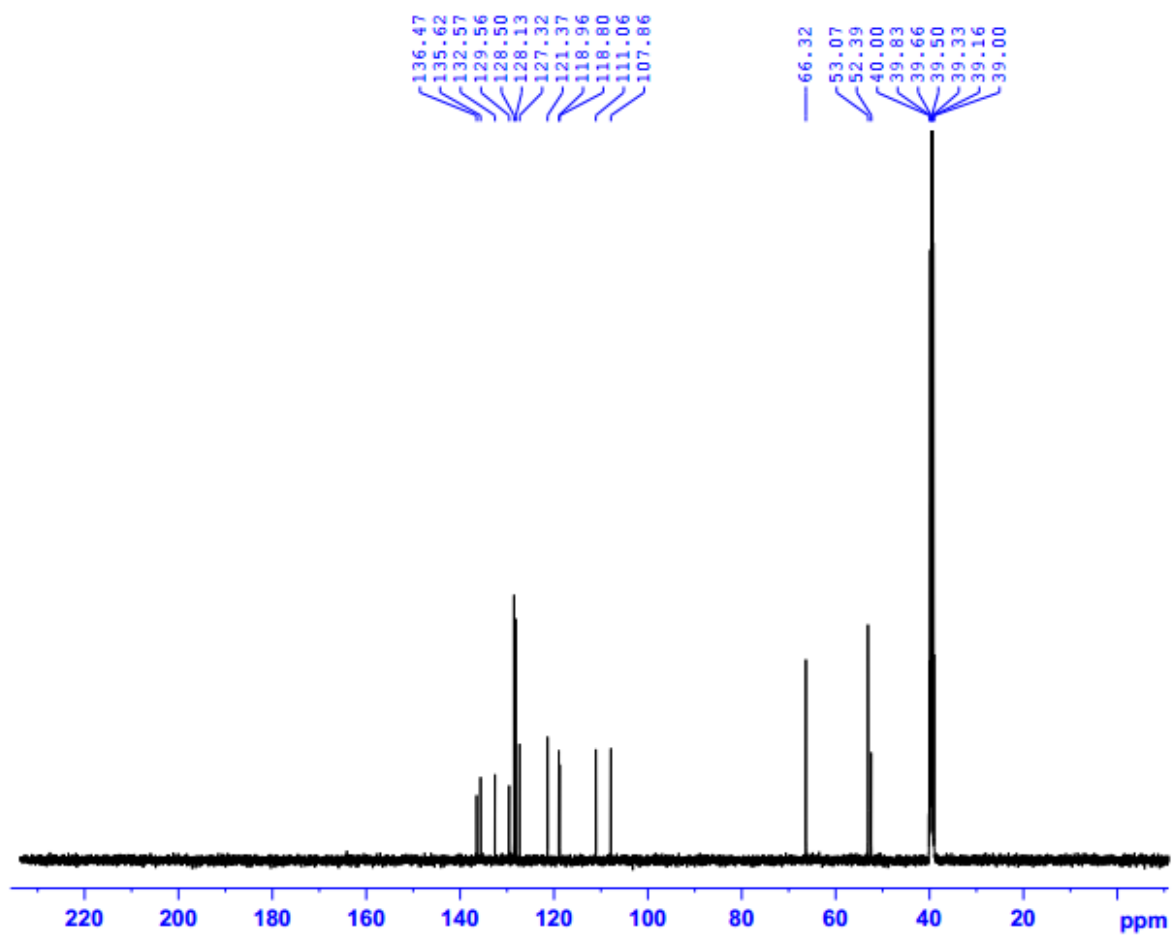


¹H-NMR:



¹³C-NMR:

PKMF-DMSO-C13CPD



ESI-HRMS:

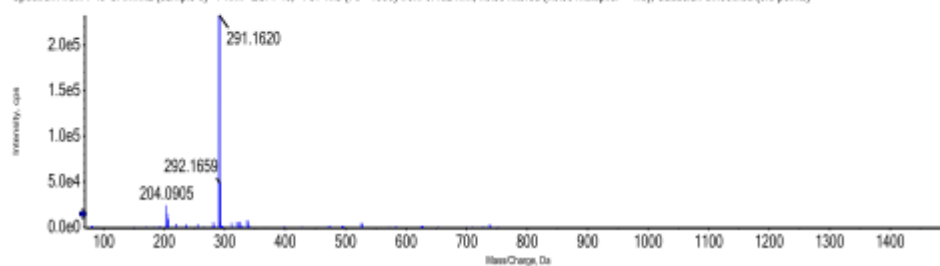
ANALYSIS REPORT

Injection details

Sample name	PKMF	Vial position	19
Sample file name	SER. wiff2 - CHI	Inject volume	5.00
Acquisition date	8/1/2019 1:04:54 PM	Acquisition method	ESI_NEG_SCAN
Operator	CB21261708	Instrument name	X500R.QTOF

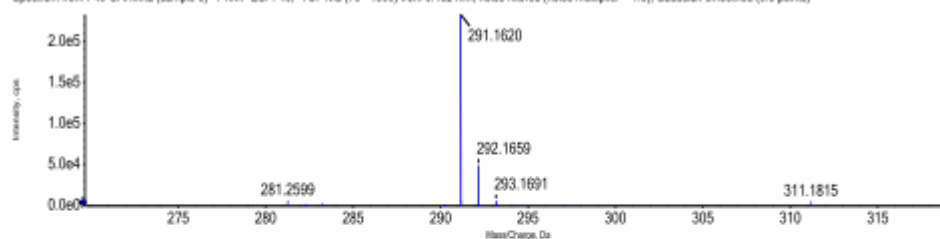
Full mass spectrum

Spectrum from P49-CH1.wiff2 (sample 6) - PKMF-ESI-P49, -TOF MS (70 - 1500) from 0.162 min, noise filtered (noise multiplier = 1.5), Gaussian smoothed (0.5 points)



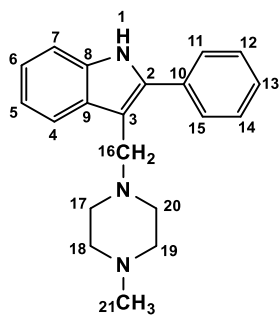
Expanded spectrum

Spectrum from P49-CH1.wiff2 (sample 6) - PKMF-ESI-P49, -TOF MS (70 - 1500) from 0.162 min, noise filtered (noise multiplier = 1.5), Gaussian smoothed (0.5 points)



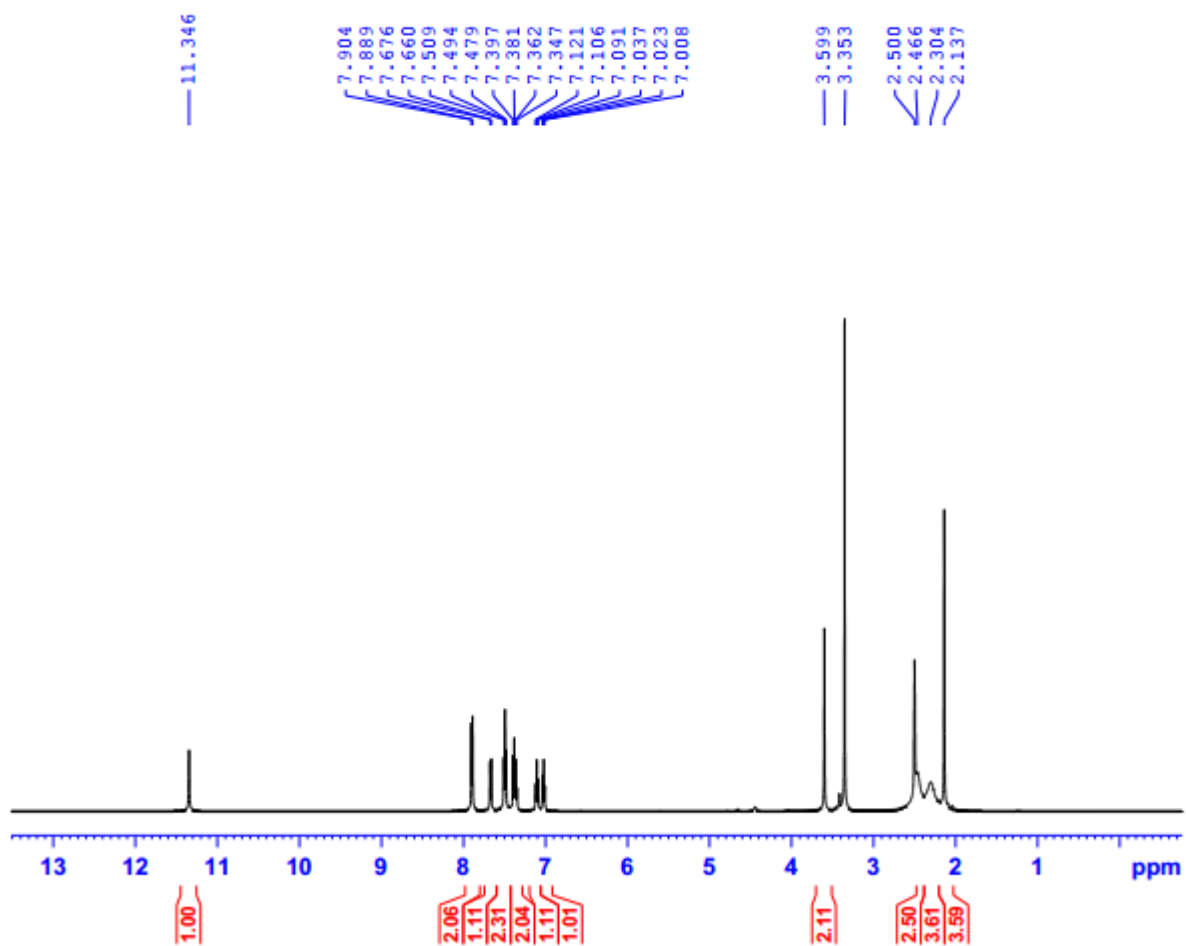
Molecular formula prediction

3-((4-methylpiperazin-1-yl)methyl)-2-phenyl-1H-indole (4g)



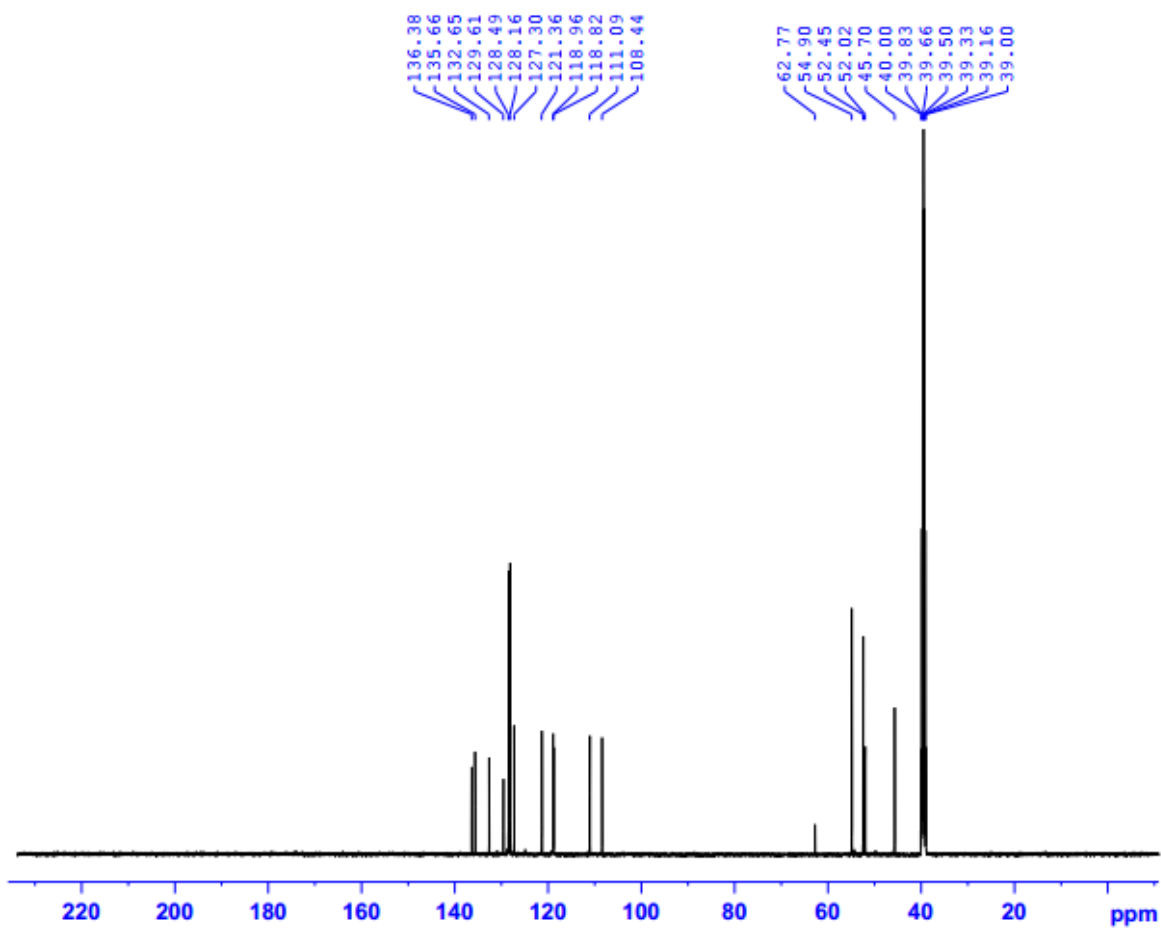
¹H-NMR:

PKAF-DMSO-1H



¹³C-NMR:

PKAF-DMSO-C13CPD



ESI-HRMS:

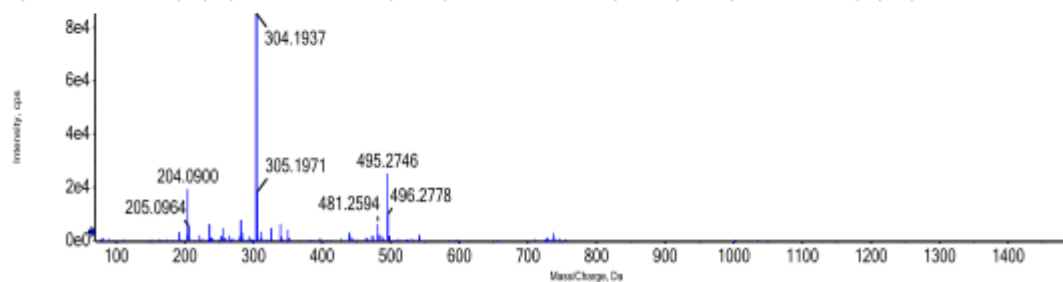
ANALYSIS REPORT

Injection details

<i>Sample name</i>	PKAF	<i>Vial position</i>	12
<i>Sample file name</i>	SER. wiff2 - CHI	<i>Inject volume</i>	5.00
<i>Acquisition date</i>	8/1/2019 1:04:54 PM	<i>Acquisition method</i>	ESI_NEG_SCAN
<i>Operator</i>	CB21261708	<i>Instrument name</i>	X500R QTOF

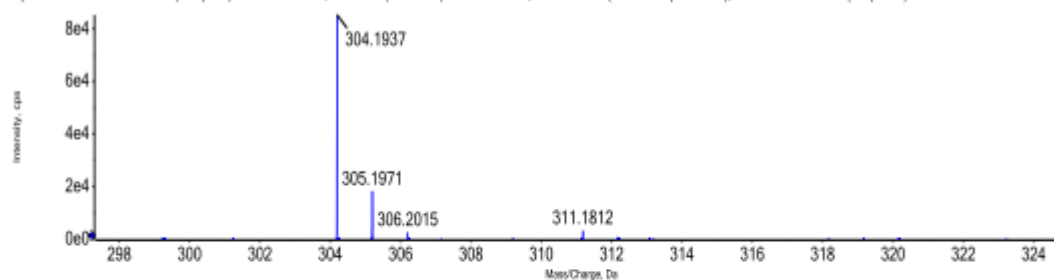
Full mass spectrum

Spectrum from P49-CHI.wiff2 (sample 3) - PKAF-ESI-P49, -TOF MS (70 - 1500) from 0.153 min, noise filtered (noise multiplier = 1.5), Gaussian smoothed (0.5 points)



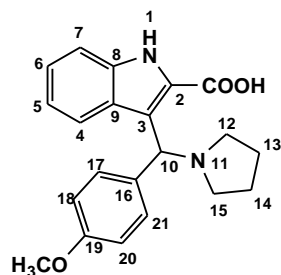
Expanded spectrum

Spectrum from P49-CHI.wiff2 (sample 3) - PKAF-ESI-P49, -TOF MS (70 - 1500) from 0.153 min, noise filtered (noise multiplier = 1.5), Gaussian smoothed (0.5 points)

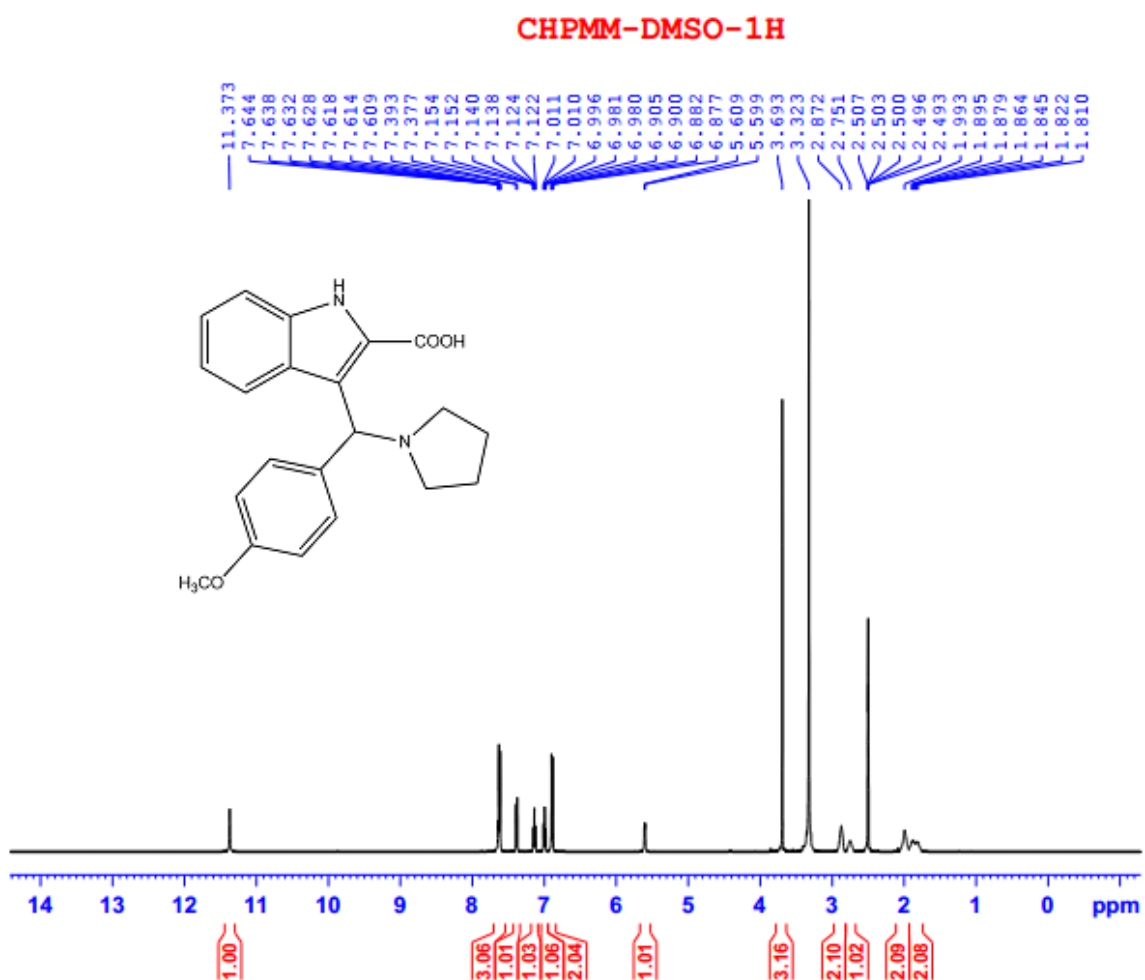


Molecular formula prediction

3-[(4-Methoxy-phenyl)-pyrrolidin-1-yl-methyl]-1H-indole-2-carboxylic acid (5a)

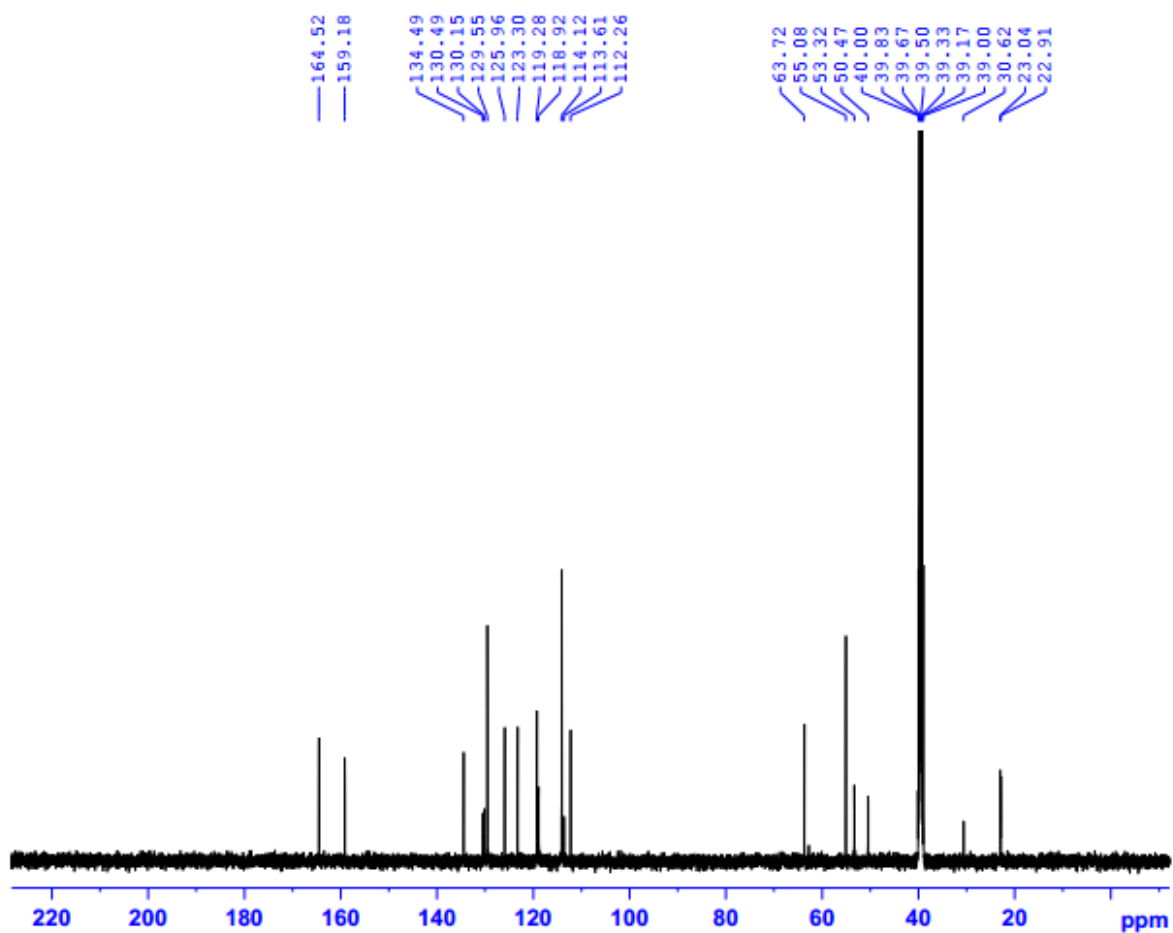


¹H-NMR:



¹³C-NMR:

CHPMM-DMSO-C13CPD



ESI-HRMS:

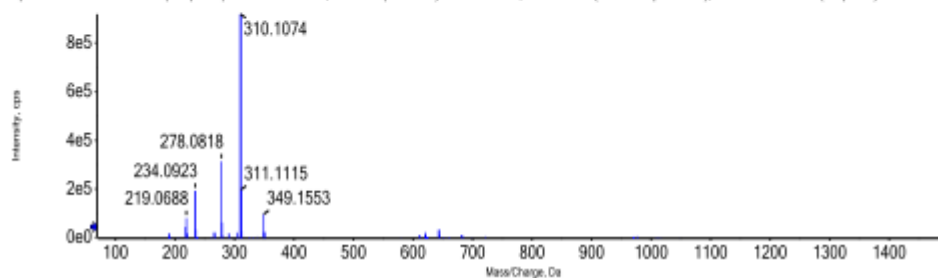
ANALYSIS REPORT

Injection details

<i>Sample name</i>	CHPMM	<i>Vial position</i>	30
<i>Sample file name</i>	SER. wif2-CHI	<i>Inject volume</i>	5.00
<i>Acquisition date</i>	06/05/2019 1:04:54 PM	<i>Acquisition method</i>	ESI_NEG_SCAN
<i>Operator</i>	CB21261708	<i>Instrument name</i>	X500R QTOF

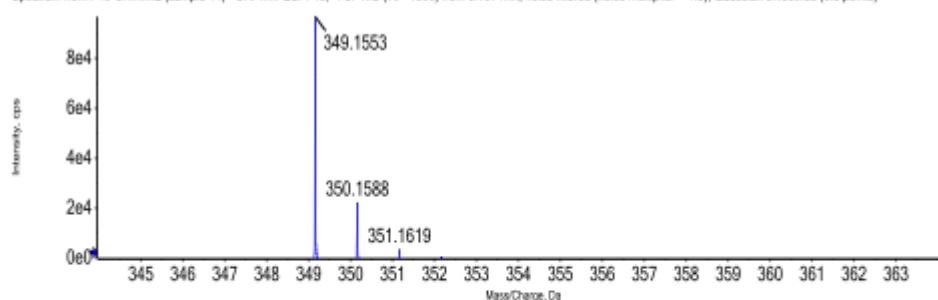
Full mass spectrum

Spectrum from P49-CHI.wif2 (sample 11) - CHPMM-ESI-P49, -TOF MS (70 - 1500) from 0.157 min, noise filtered (noise multiplier = 1.5), Gaussian smoothed (0.5 points)



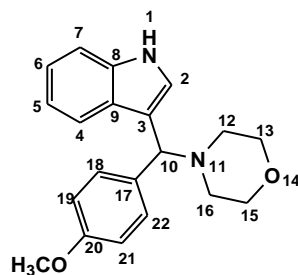
Expanded spectrum

Spectrum from P49-CHI.wif2 (sample 11) - CHPMM-ESI-P49, -TOF MS (70 - 1500) from 0.157 min, noise filtered (noise multiplier = 1.5), Gaussian smoothed (0.5 points)

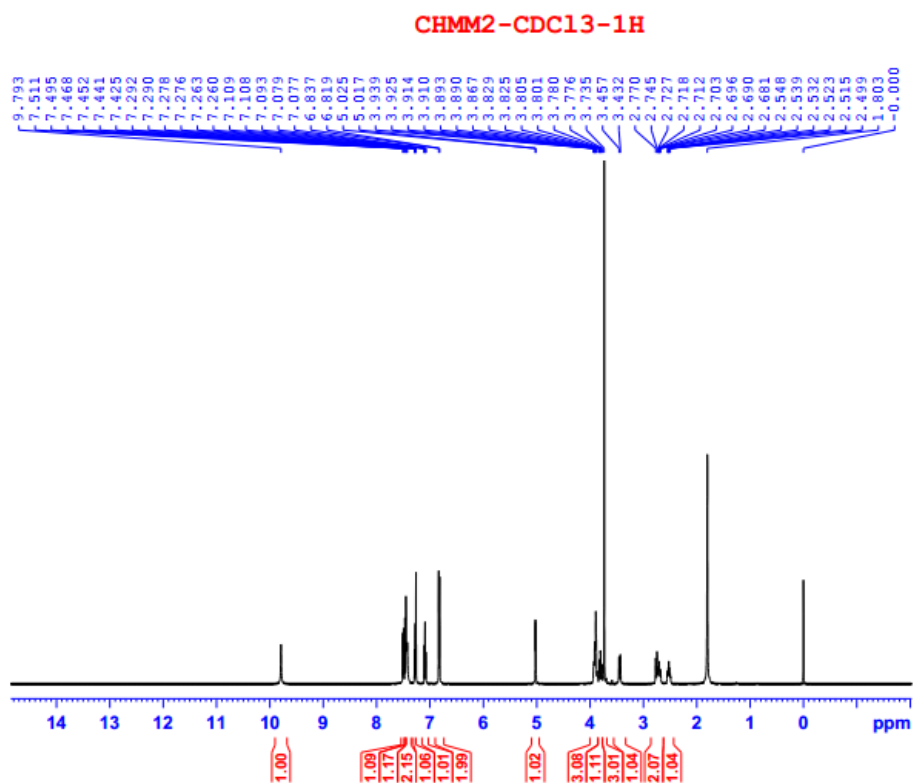


Molecular formula prediction

3-[(4-Methoxy-phenyl)-morpholin-4-yl-methyl]-1H-indole-2-carboxylic acid (**5b**)

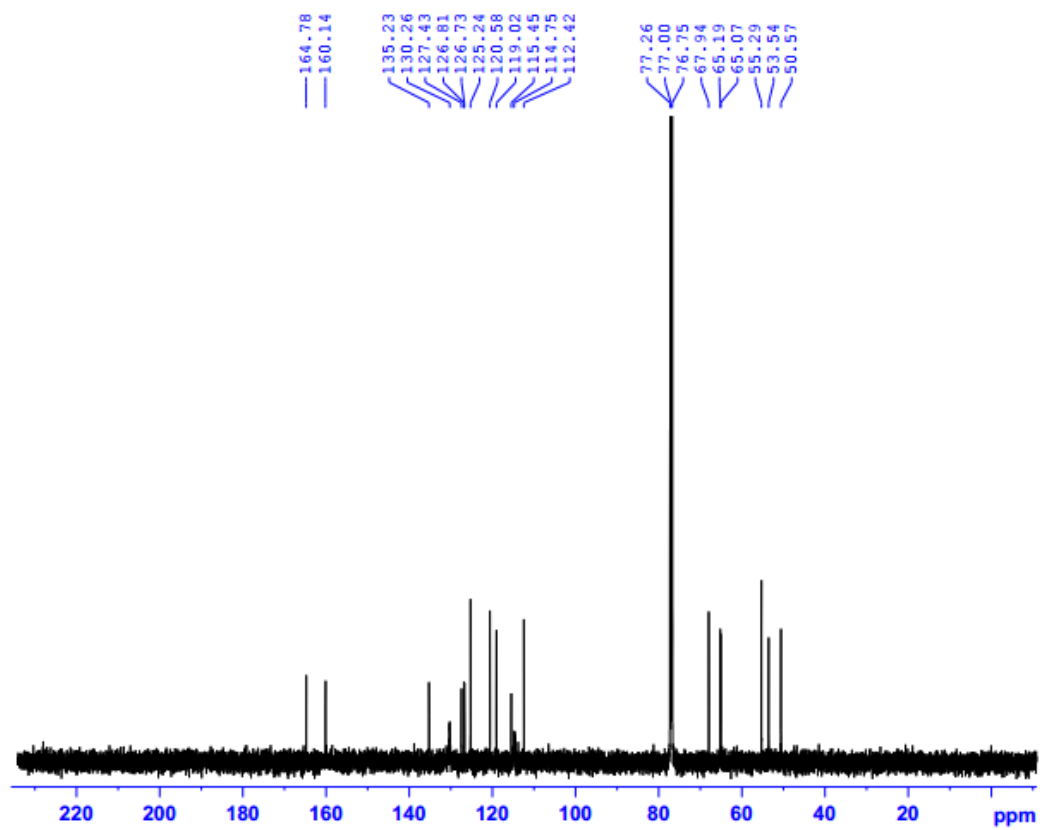


¹H-NMR:



¹³C-NMR:

CHMM2-CDC13-C13CPD



ESI-HRMS:

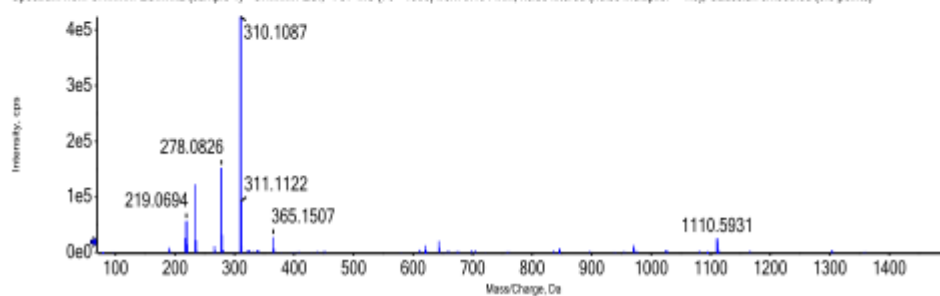
ANALYSIS REPORT

Injection details

Sample name	CHMMM	Vial position	2
Sample file name	SER. wiff2-CHI	Inject volume	5.00
Acquisition date	16/04/2019 1:04:54 PM	Acquisition method	ESI_NEG_SCAN
Operator	CB21261708	Instrument name	X500R QTOF

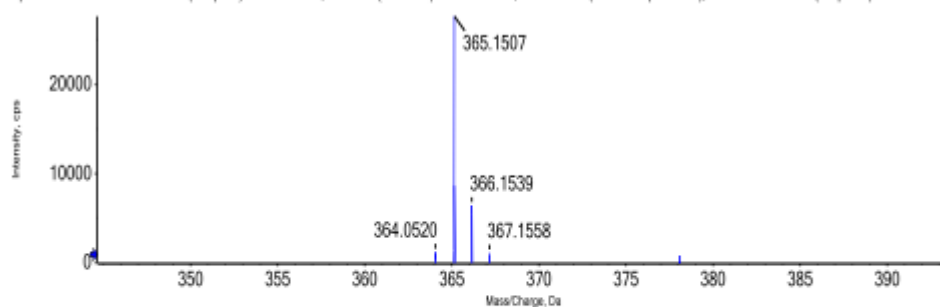
Full mass spectrum

Spectrum from CHMM-ESLwif2 (sample 1) - CHMM-ESI, -TOF MS (70 - 1500) from 0.194 min, noise filtered (noise multiplier = 1.5), Gaussian smoothed (0.5 points)



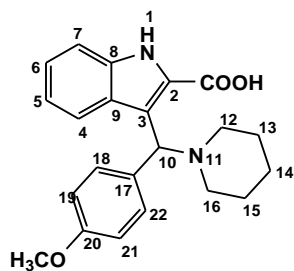
Expanded spectrum

Spectrum from CHMM-ESLwif2 (sample 1) - CHMM-ESI, -TOF MS (70 - 1500) from 0.194 min, noise filtered (noise multiplier = 1.5), Gaussian smoothed (0.5 points)

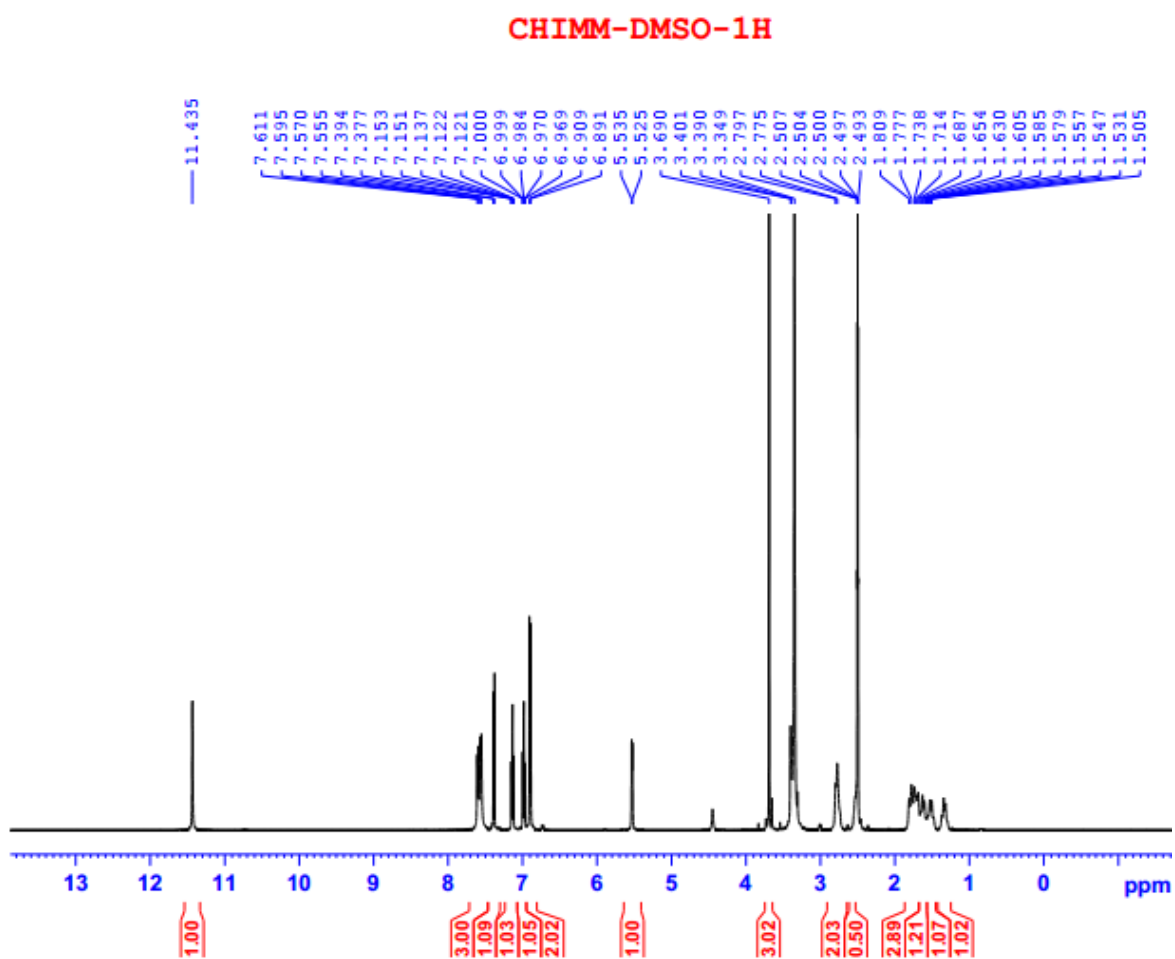


Molecular formula prediction

3-[(4-Methoxy-phenyl)-piperidin-1-yl-methyl]-1H-indole-2-carboxylic acid (**5c**)

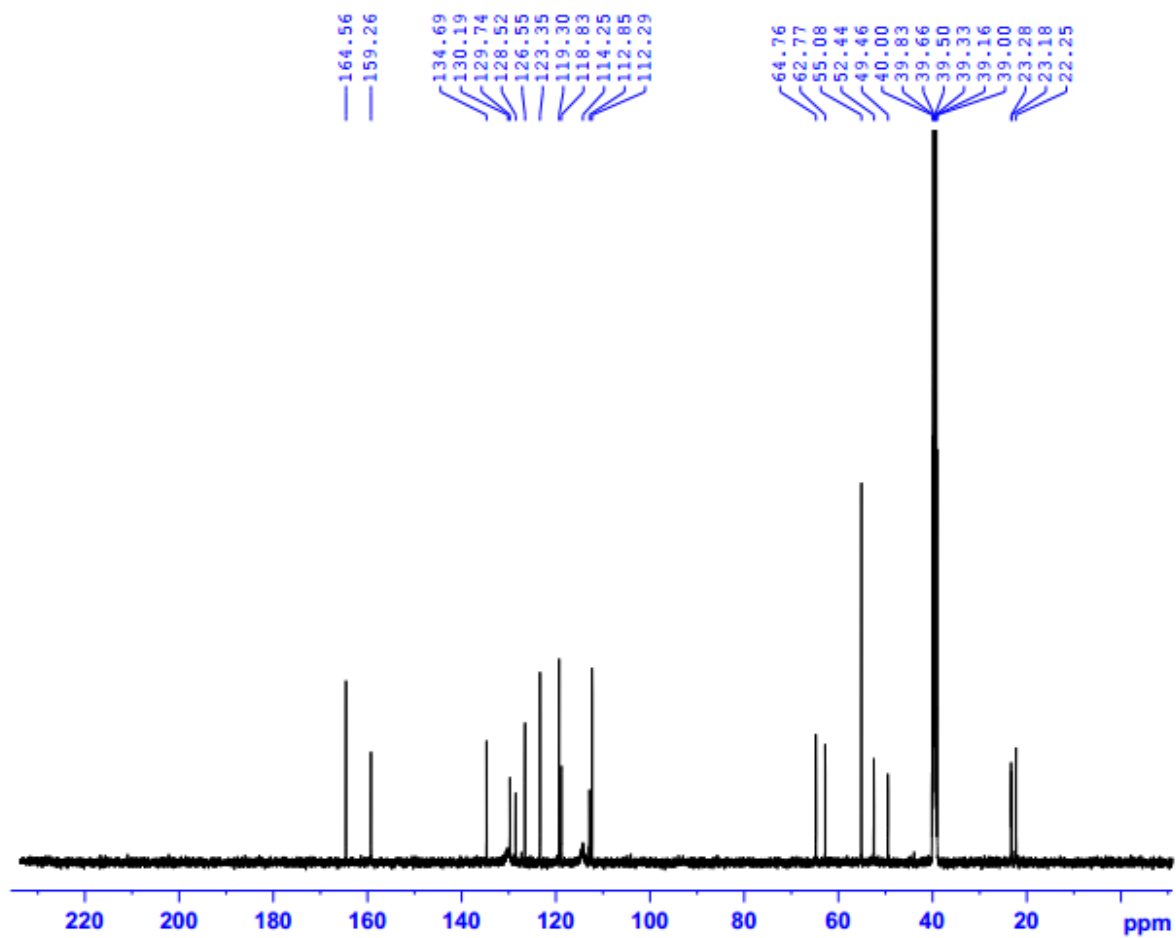


¹H-NMR:



¹³C-NMR:

CHIMM-DMSO-C13CPD



ESI-HRMS:

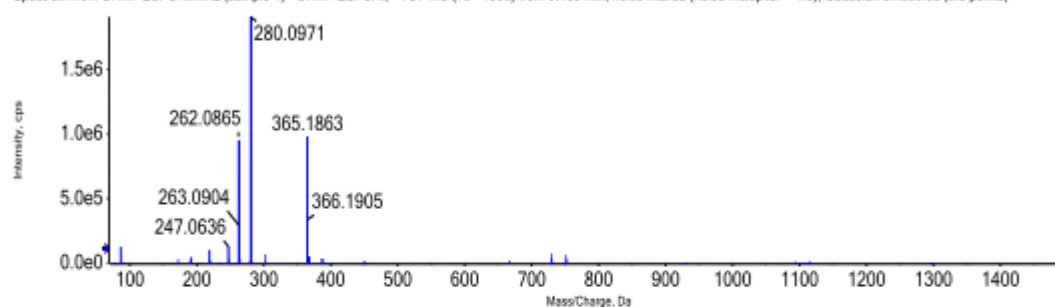
ANALYSIS REPORT

Injection details

Sample name	CHIMM	Vial position	41
Sample file name	SER. wiff2-CHI	Inject volume	5.00
Acquisition date	06/05/2019 1:04:54 PM	Acquisition method	ESI_NEG_SCAN
Operator	CB21261708	Instrument name	X500R QTOF

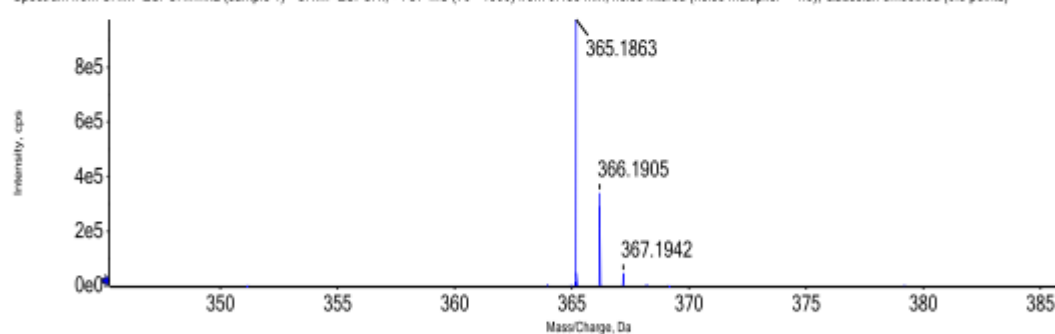
Full mass spectrum

Spectrum from CHIM+ESI-CHI.wiff2 (sample 1) - CHIM+ESI-CHI, +TOF MS (70 - 1500) from 0.185 min, noise filtered (noise multiplier = 1.5), Gaussian smoothed (0.5 points)



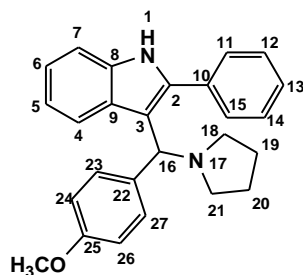
Expanded spectrum

Spectrum from CHIM+ESI-CHI.wiff2 (sample 1) - CHIM+ESI-CHI, +TOF MS (70 - 1500) from 0.185 min, noise filtered (noise multiplier = 1.5), Gaussian smoothed (0.5 points)

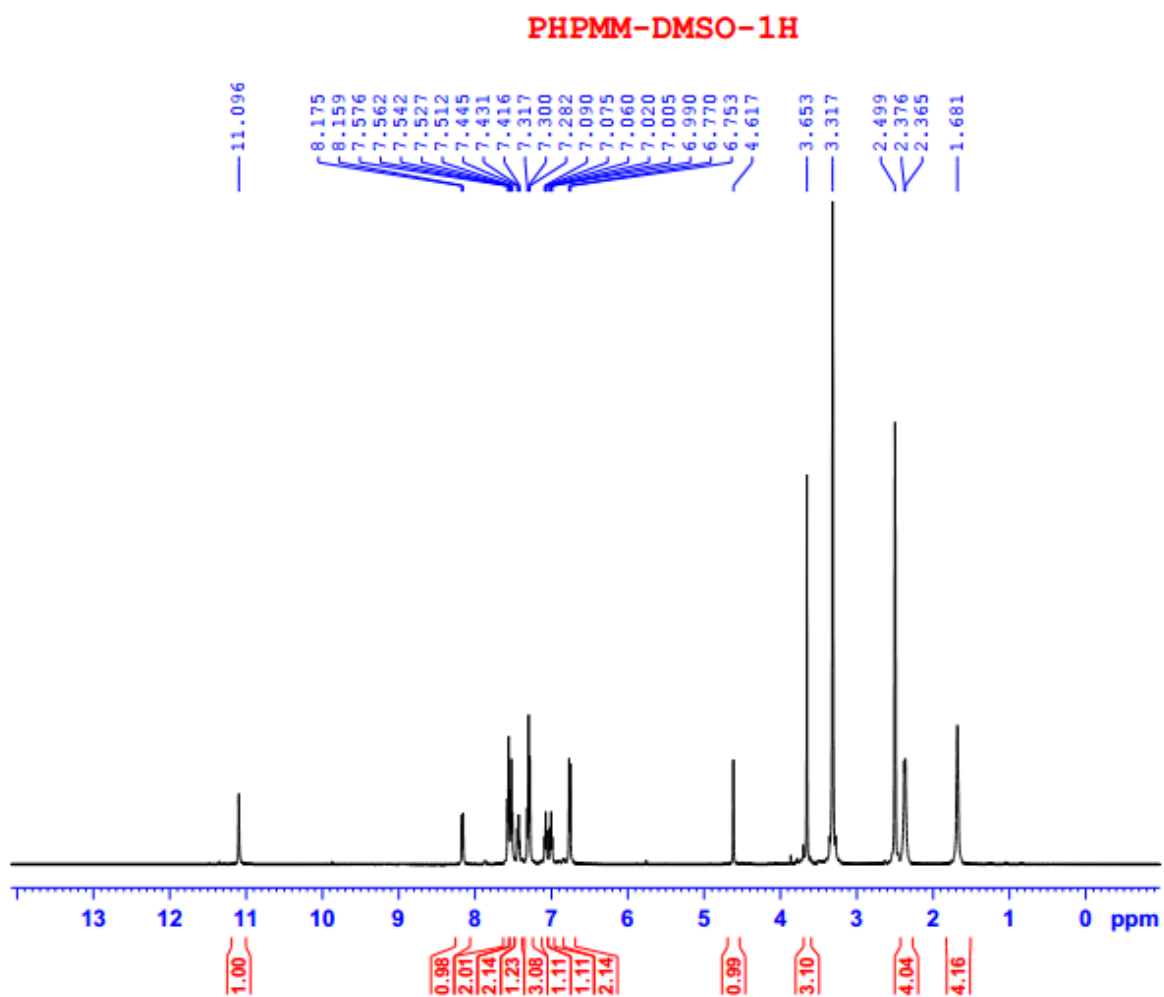


Molecular formula prediction

3-[(4-Methoxy-phenyl)-pyrrolidin-1-yl-methyl]-2-phenyl-1H-indole
(5d)

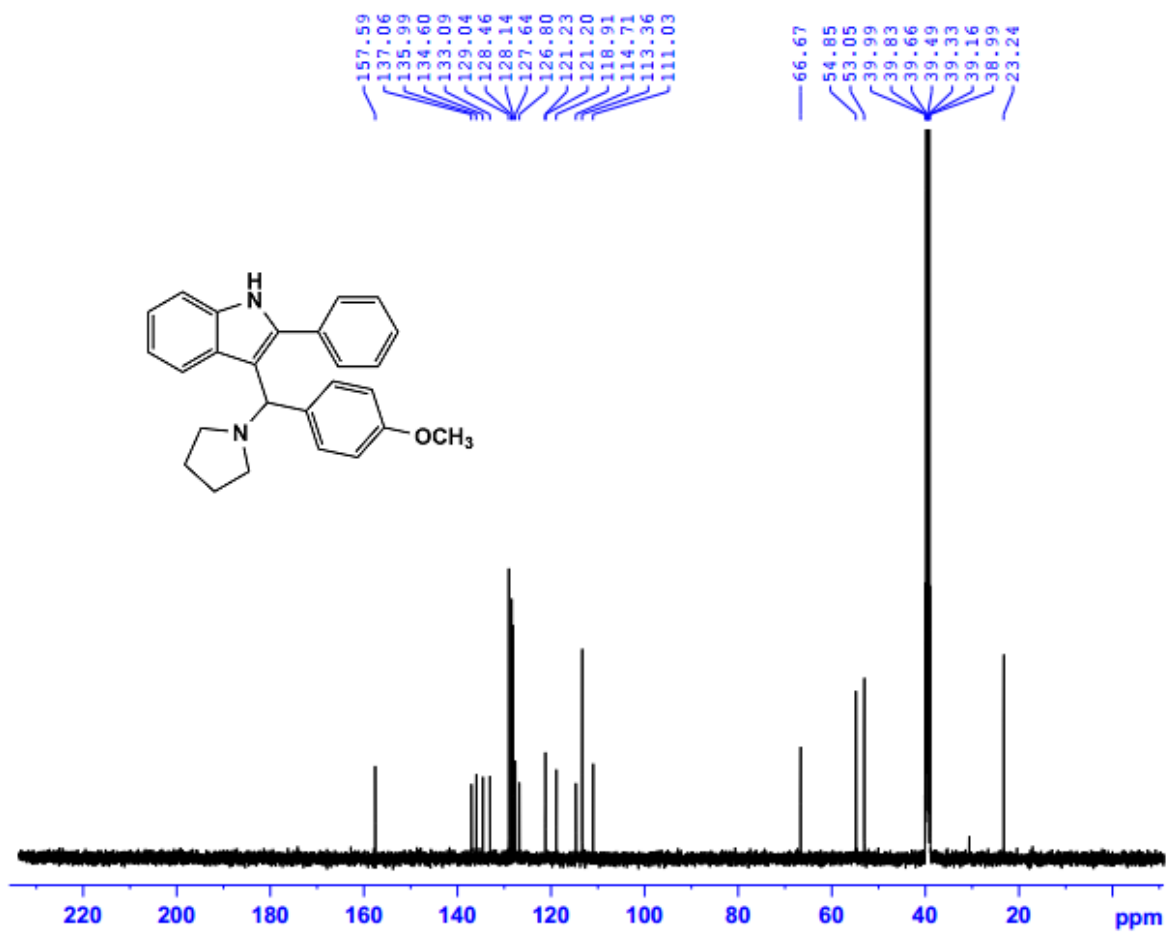


¹H-NMR:



¹³C-NMR:

PHPMM-DMSO-C13CPD



ESI-HRMS:

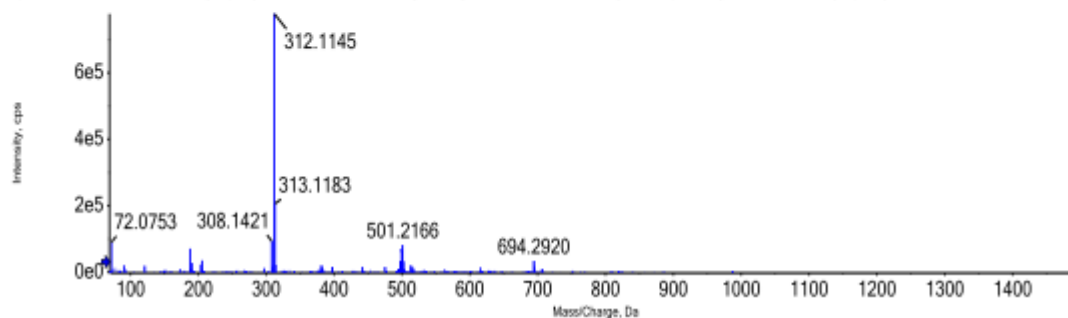
ANALYSIS REPORT

Injection details

Sample name	PHPMM	Vial position	1
Sample file name	SER. wiff2-CHI	Inject volume	5.00
Acquisition date	16/04/2019 1:04:54 PM	Acquisition method	ESI_POS_SCAN
Operator	CB21261708	Instrument name	X500R QTOF

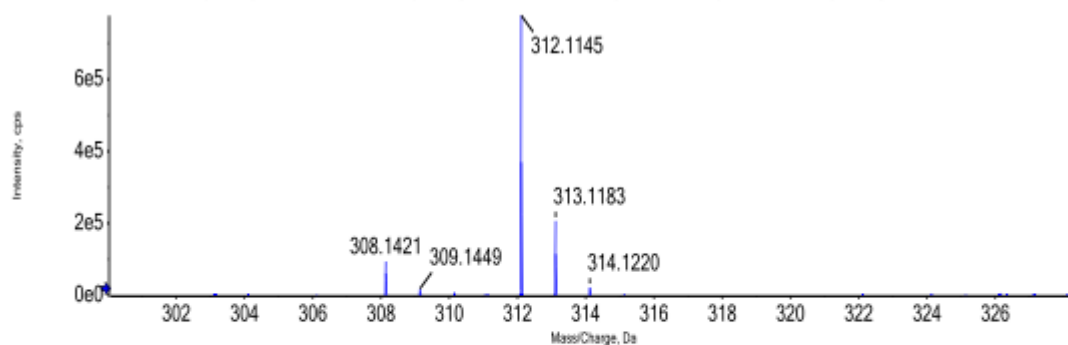
Full mass spectrum

Spectrum from PHPMM+ESI-CHI.wiff2 (sample 1) - PHPMM+ESI-CHI, +TOF MS (70 - 1500) from 0.167 min, noise filtered (noise multiplier = 1.5), Gaussian smoothed (0.5 points)



Expanded spectrum

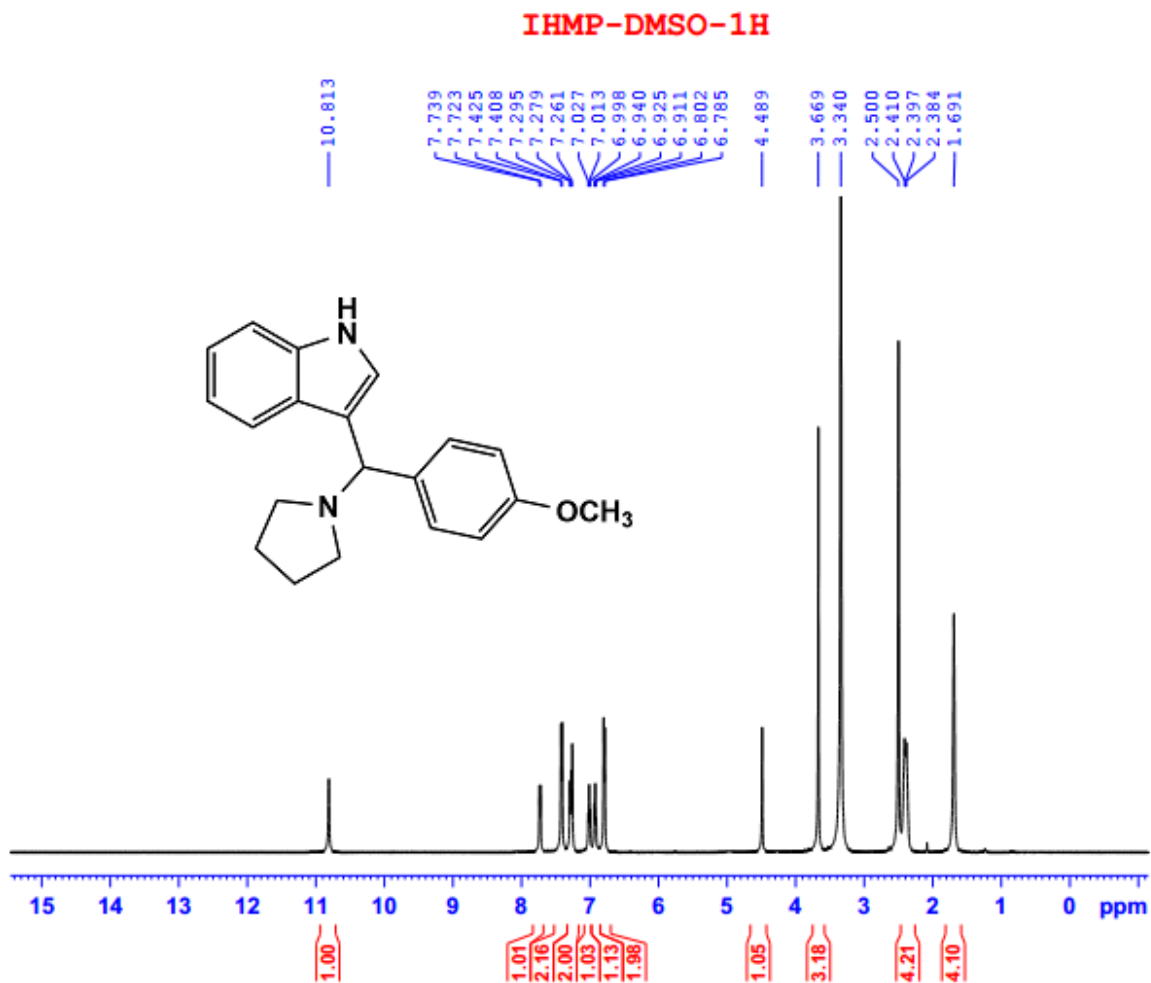
Spectrum from PHPMM+ESI-CHI.wiff2 (sample 1) - PHPMM+ESI-CHI, +TOF MS (70 - 1500) from 0.167 min, noise filtered (noise multiplier = 1.5), Gaussian smoothed (0.5 points)



Molecular formula prediction

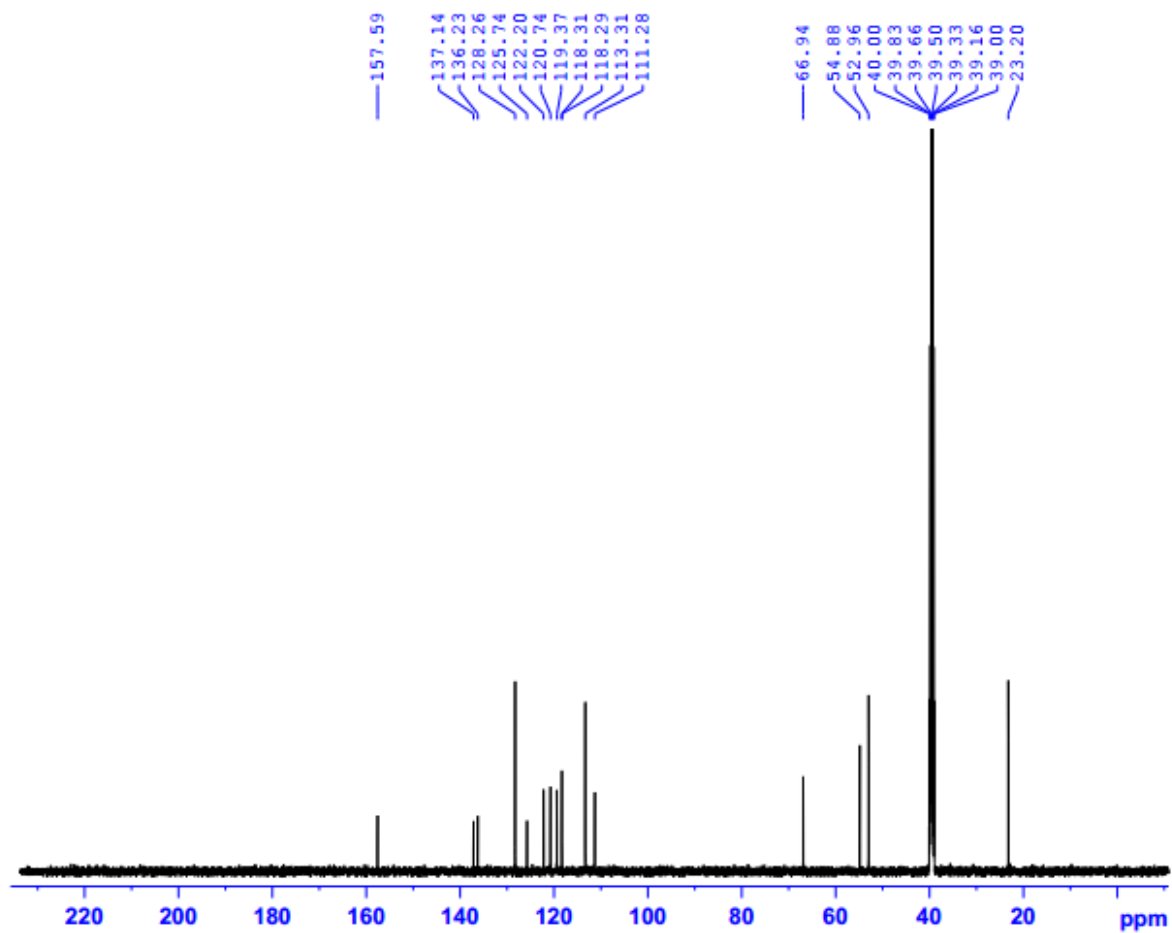
3-[(4-Methoxy-phenyl)-pyrrolidin-1-yl-methyl]-1H-indole (5e)

¹H-NMR:



¹³C-NMR:

IHMP-DMSO-C13CPD



ESI-HRMS:

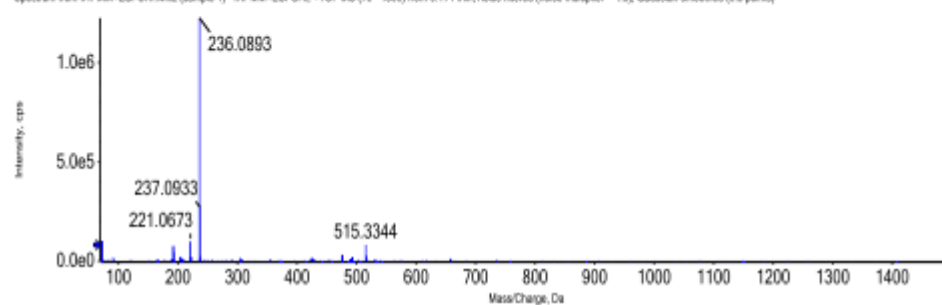
ANALYSIS REPORT

Injection details

<i>Sample name</i>	IHPMM	<i>Vial position</i>	2
<i>Sample file name</i>	SER. wiff2-CHI	<i>Inject volume</i>	5.00
<i>Acquisition date</i>	16/04/2019 1:04:54 PM	<i>Acquisition method</i>	ESI_POS_SCAN
<i>Operator</i>	CB21261708	<i>Instrument name</i>	X500R_QTOF

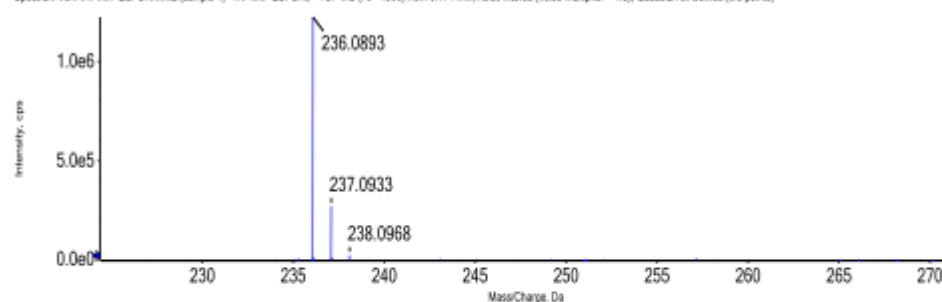
Full mass spectrum

Spectrum from IHPMM-ESI-CHI.wiff2 (sample 1) - IHPMM-ESI-CHI, +TOF MS (70 - 1500) from 0.171 min, noise filtered (noise multiplier = 1.5), Gaussian smoothed (0.5 points)



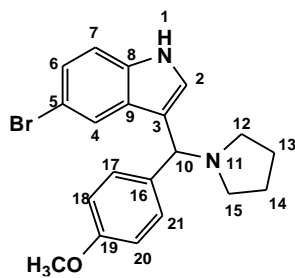
Expanded spectrum

Spectrum from IHPMM-ESI-CHI.wiff2 (sample 1) - IHPMM-ESI-CHI, +TOF MS (70 - 1500) from 0.171 min, noise filtered (noise multiplier = 1.5), Gaussian smoothed (0.5 points)

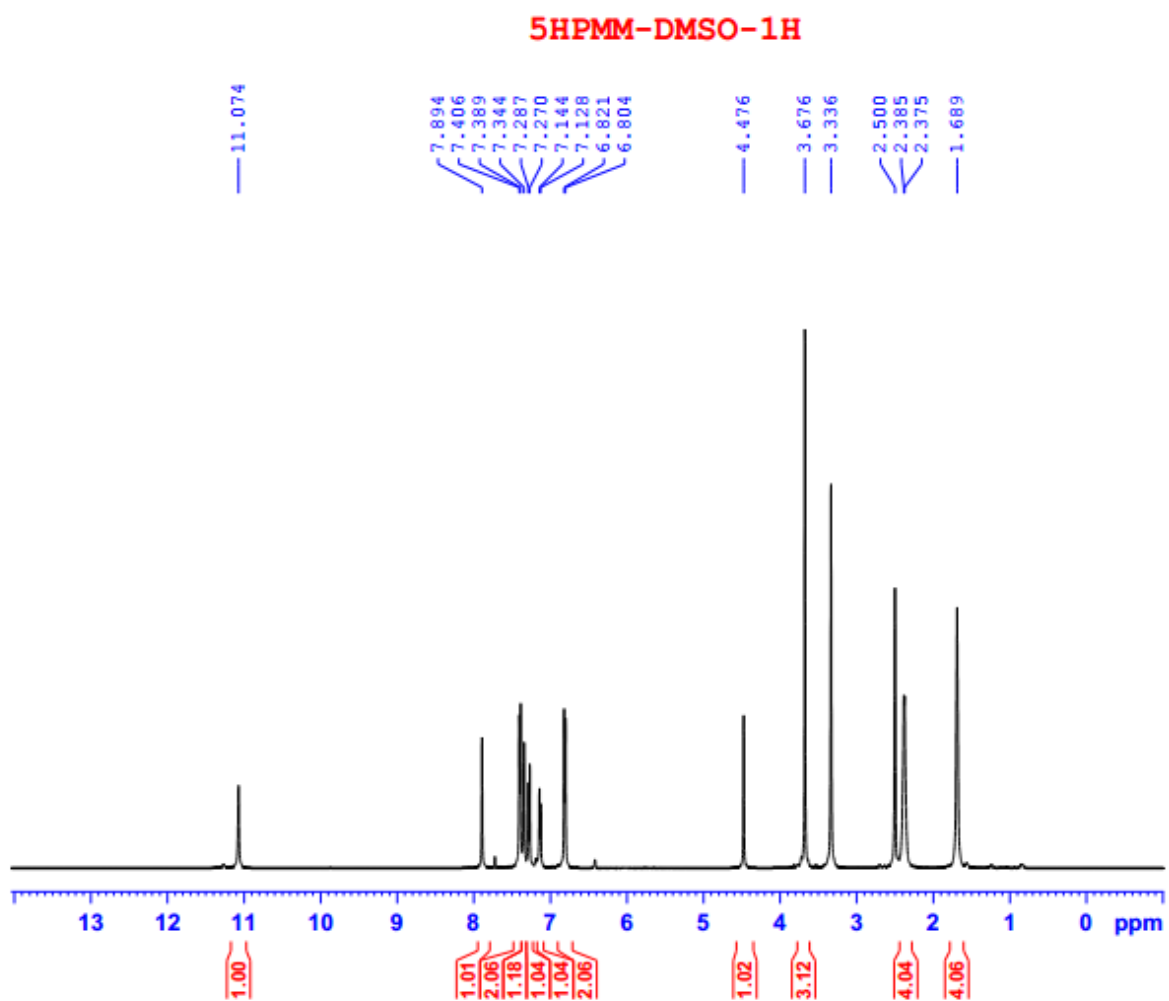


Molecular formula prediction

5-Bromo-3-[(4-methoxy-phenyl)-pyrrolidin-1-yl-methyl]-1H-indole
(5f)

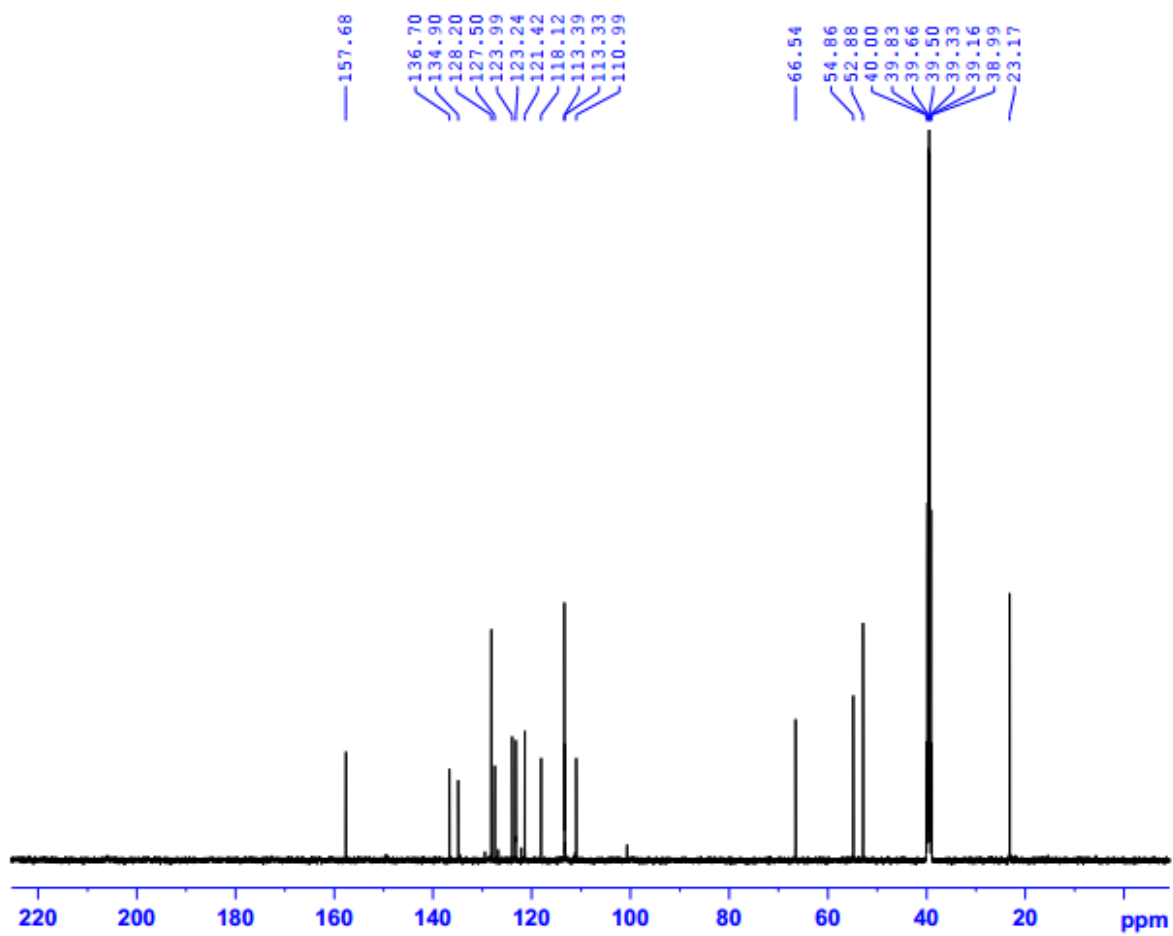


¹H-NMR:



¹³C-NMR:

5HPMM-DMSO-C13CPD



ESI-HRMS:

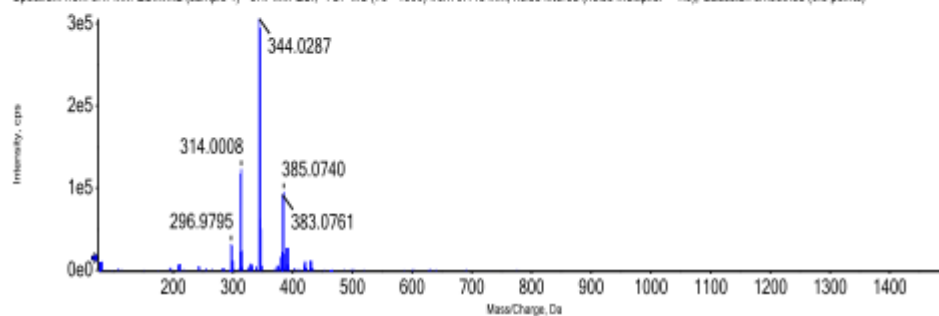
ANALYSIS REPORT

Injection details

Sample name	5HPMM	Vial position	2
Sample file name	SER_wiff2-CHI	Inject volume	5.00
Acquisition date	16/04/2019 1:04:54 PM	Acquisition method	ESI_NEG_SCAN
Operator	CB21261708	Instrument name	X500R_QTOF

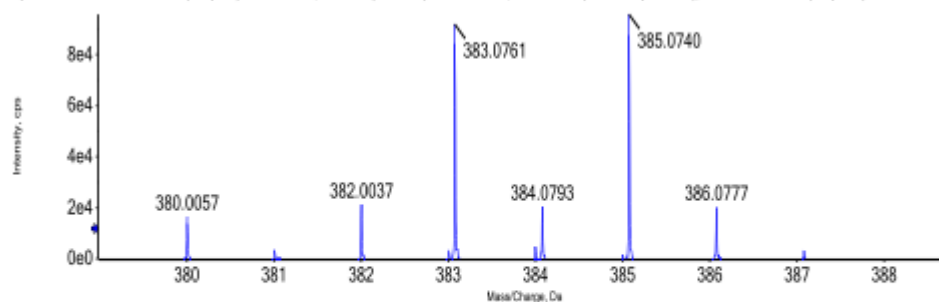
Full mass spectrum

Spectrum from 5HPMM-ESI.wiff2 (sample 1) - 5HPMM-ESI, -TOF MS (75 - 1500) from 0.148 min, noise filtered (noise multiplier = 1.5), Gaussian smoothed (0.5 points)



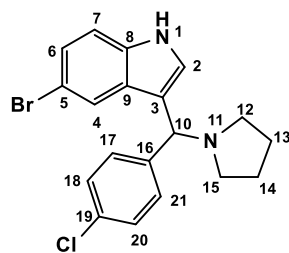
Expanded spectrum

Spectrum from 5HPMM-ESI.wiff2 (sample 1) - 5HPMM-ESI, -TOF MS (75 - 1500) from 0.148 min, noise filtered (noise multiplier = 1.5), Gaussian smoothed (0.5 points)



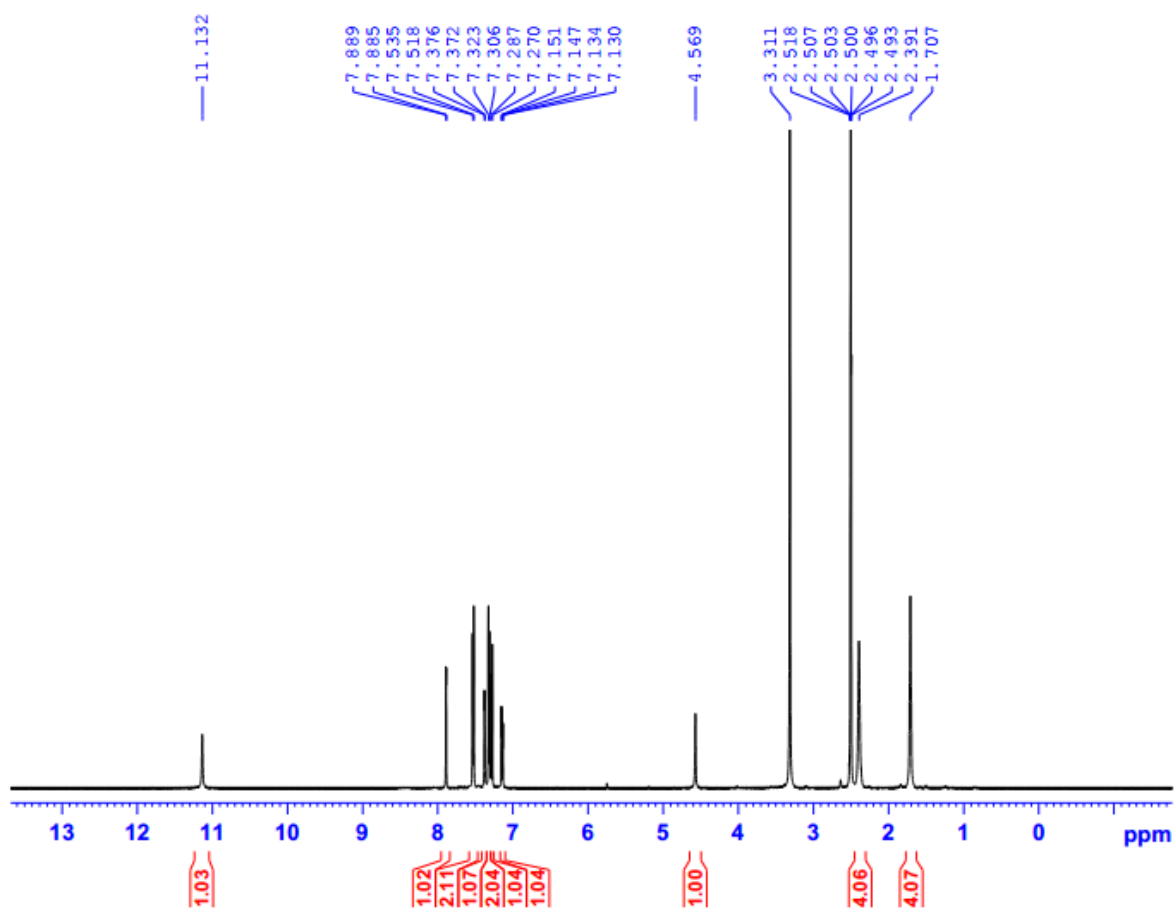
Molecular formula prediction

5-bromo-3-((4-chlorophenyl)pyrrolidin-1-yl)methyl)-1H-indole (5g)



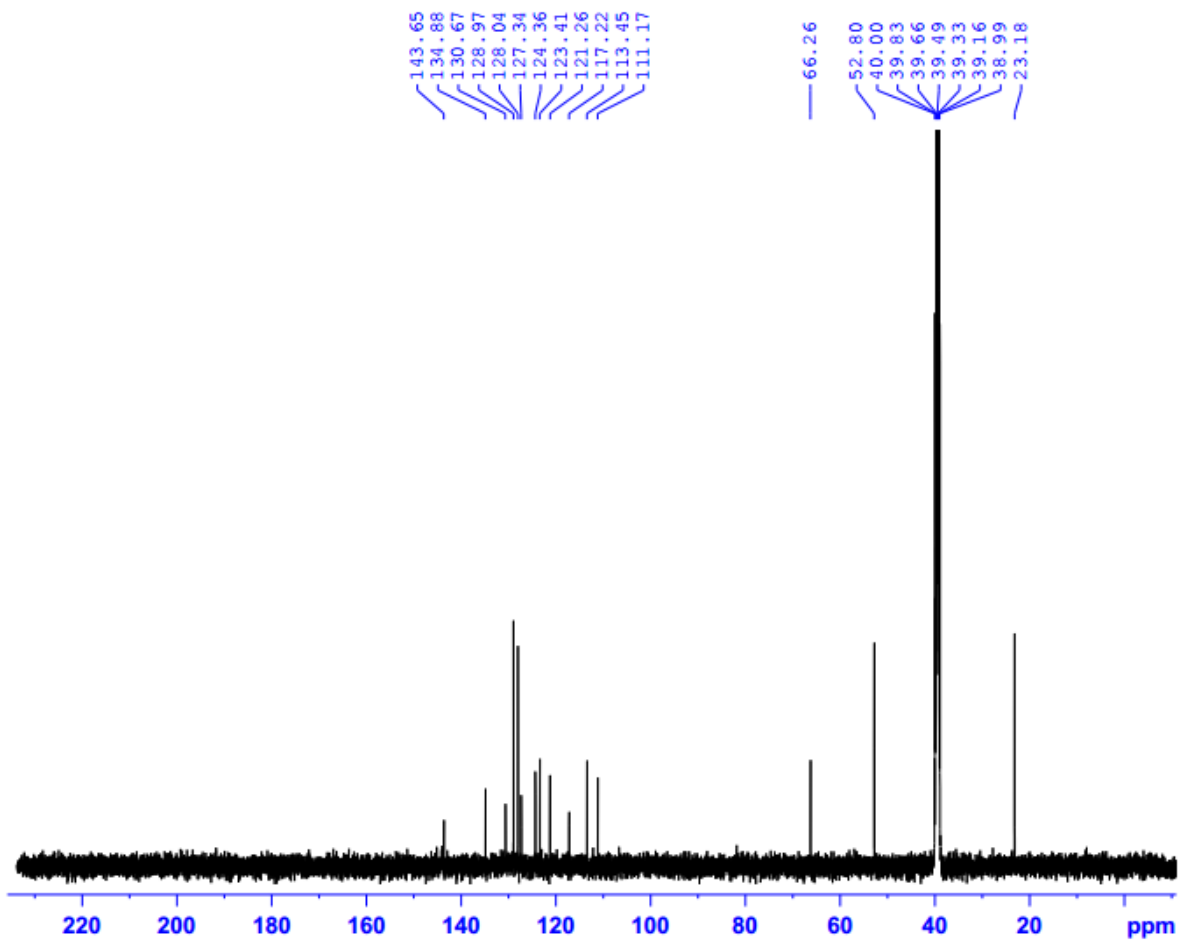
¹H-NMR:

5HP4C-DMSO-1H



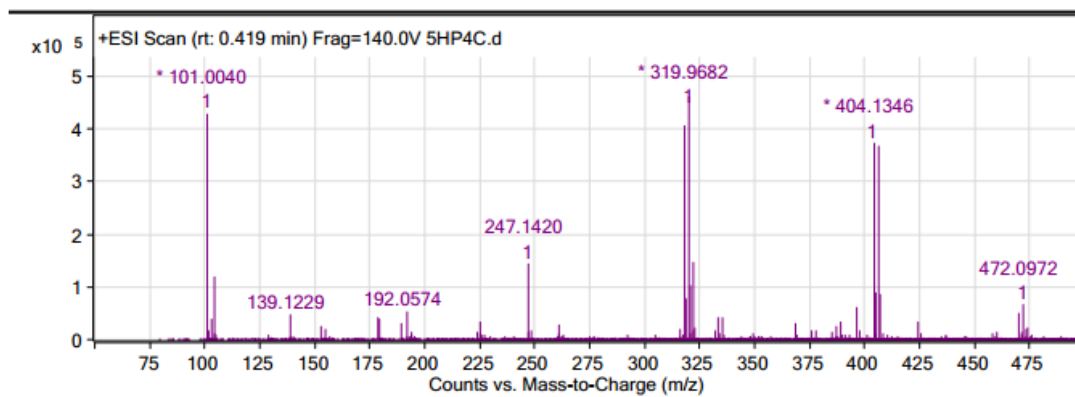
¹³C-NMR:

5HP4C-DMSO-C13CPD



ESI-HRMS:

Qualitative Analysis Report



Peak List

<i>m/z</i>	<i>z</i>	Abund
101.004	1	428150.19
104.1071	1	119625.32
247.142	1	143351.88
317.9694	1	404799.63
319.9682	1	461342.06
320.969	1	103575.79
321.9639	1	146784.94
404.1346	1	373142.69
405.1365	1	88963.96
406.1328	1	367329.38

--- End Of Report ---