

## Supporting Information

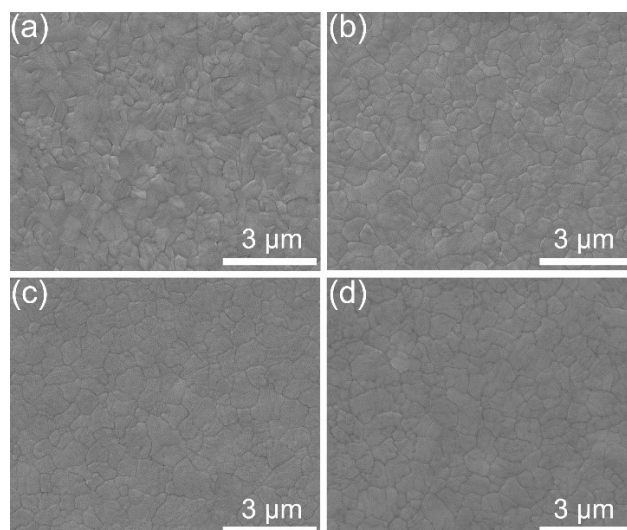
### **In-situ polymer-covered annealing strategy for high-efficiency carbon-electrode CsPbIBr<sub>2</sub> solar cells**

Xiaoping Xie,<sup>a</sup> Gang Liu,<sup>a</sup> Peng Dong,<sup>a</sup> Dawei Liu,<sup>a</sup> Yufeng Ni,<sup>a</sup> Junxiao Ma,<sup>b</sup> Weidong Zhu,<sup>b,\*</sup> Dazheng Chen,<sup>b</sup> Chunfu Zhang<sup>b,\*</sup>

<sup>a</sup>Qinghai Huanghe Hydropower Development CO., LTD., Xining, Qinghai 810008, China.

<sup>b</sup>State Key Discipline Laboratory of Wide Bandgap Semiconductor Technology & Shaanxi Joint Key Laboratory of Graphene, School of Microelectronics, Xidian University, Xi'an, Shaanxi 710071, China.

\*E-mail: wdzhu@xidian.edu.cn, cfzhang@xidian.edu.cn



**Fig. S1.** (a-d) Low-resolution SEM images of CsPbIBr<sub>2</sub> films prepared with (a) 0 mg/mL, (b) 1 mg/mL, (c) 3 mg/mL, and (d) 5 mg/mL PMMA, respectively.