

Supporting Information

Construction of MoO₂@MoS₂ heterostructures in situ on carbon cloth for hydrogen evolution reaction

Jingyang Tian, †^a Chundi Yang, †^a Zhirui Liu,^a Funan Li,^a Xiao He,^a Wei Chen,^{*b} Nan
Nan Xia,^{*c} and Chong Lin,^{*a}

^a Jiangxi Province Key Laboratory of Polymer Micro/Nano Manufacturing and
Devices, School of Chemistry, Biology and Materials Science, East China University
of Technology, Nanchang, 330013, China

^b College of Light-Textile Engineering and Art, Anhui Agriculture University, Hefei,
230036, China

^c State Key Laboratory of Biobased Material and Green Papermaking, Key Laboratory
of Pulp & Paper Science and Technology of Shandong Province/Ministry of Education,
Qilu University of Technology (Shandong Academy of Sciences), Jinan, 250353, China

*Corresponding author: lake688123@163.com (W. Chen); xianan00001@126.com (N.
Xia) (N. Xia); clin2008@163.com (C. Lin)

† Implies equal contribution.

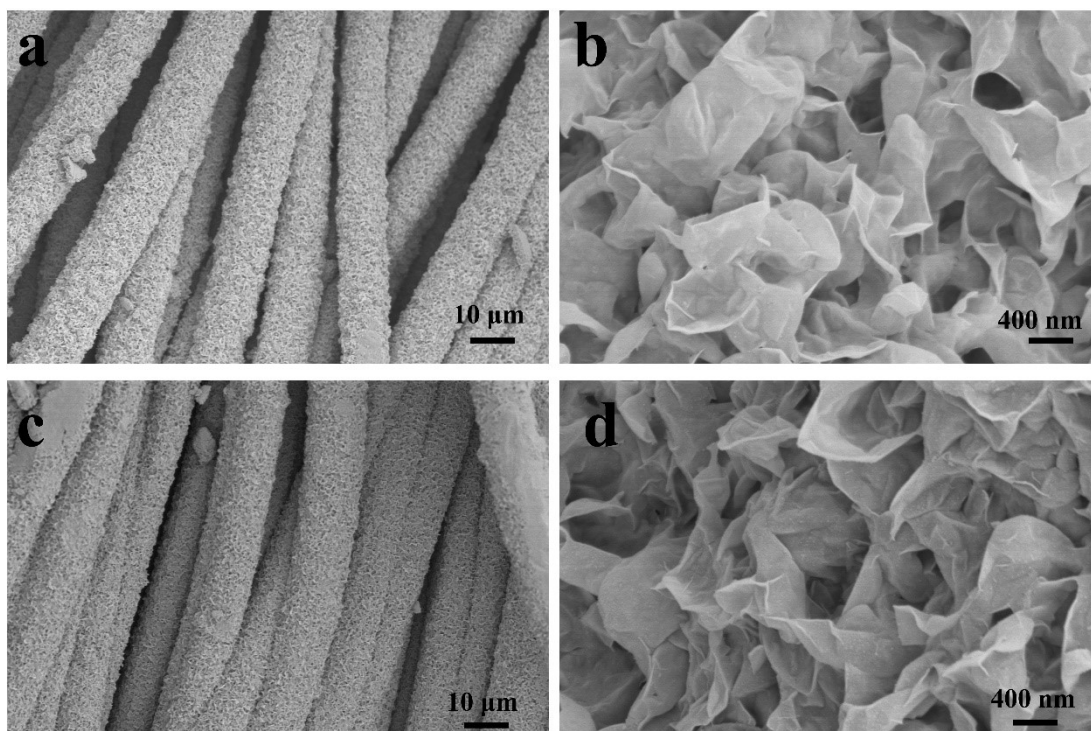


Figure S1. SEM images of (a, b) $\text{MoO}_2@MoS_2/CC-1$, (c, d) $\text{MoO}_2@MoS_2/CC-3$.

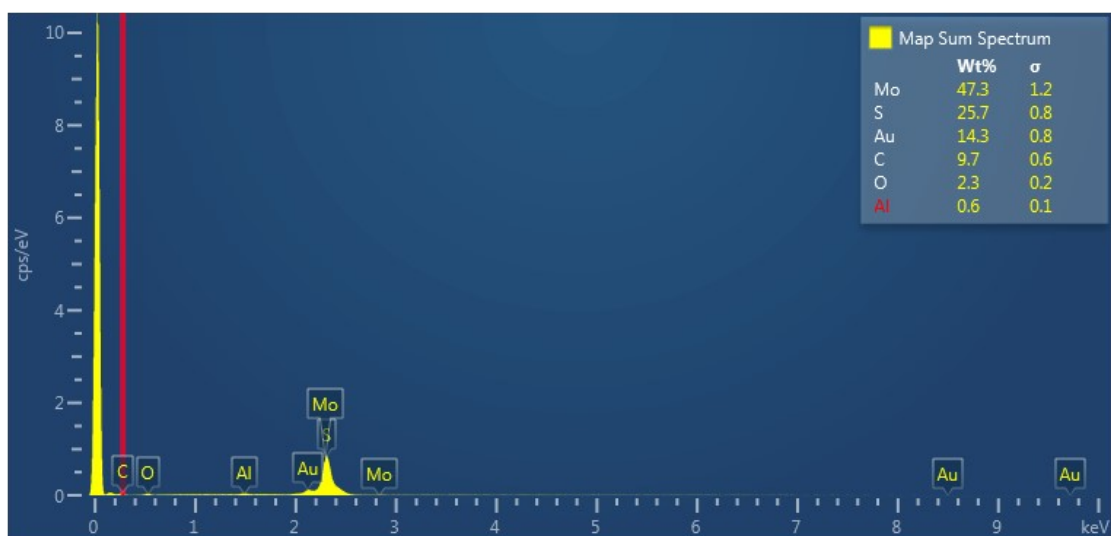


Figure S2. EDS of the $\text{MoO}_2@MoS_2/CC-2$.

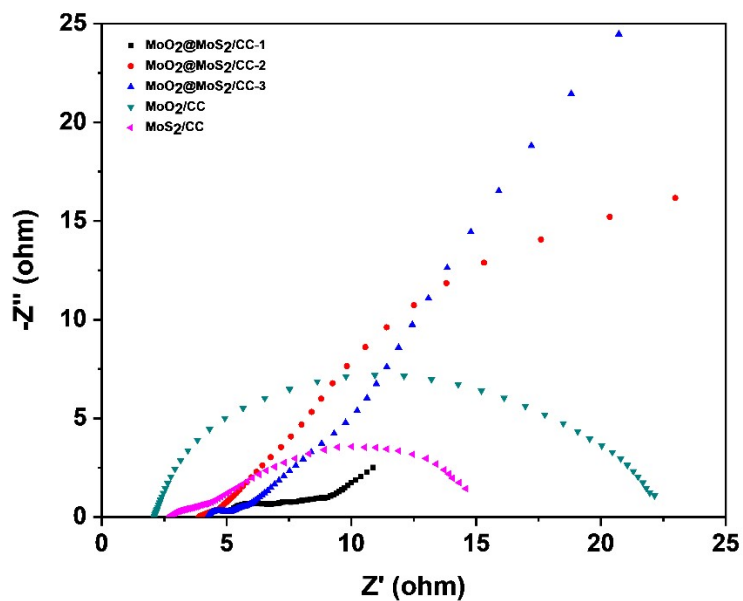


Figure S3. Nyquist plots of the catalysts vs. RHE.

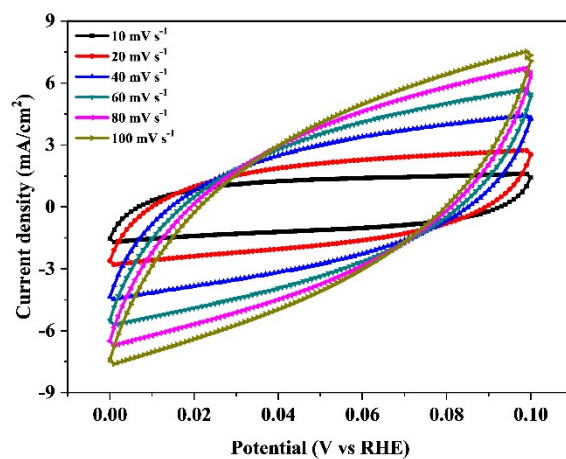


Figure S4. CV curves of $\text{MoO}_2@MoS_2/CC-1$ at different scan rates.

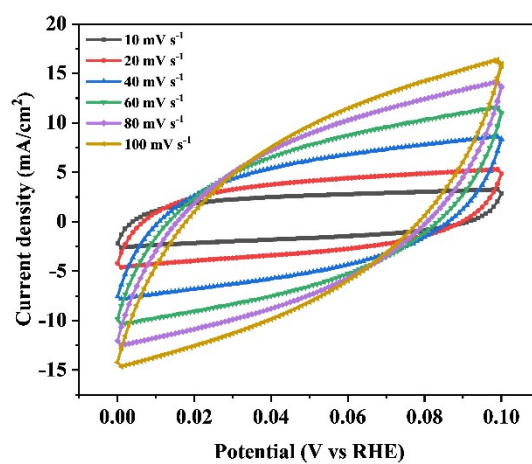


Figure S5. CV curves of $\text{MoO}_2@MoS_2/CC-2$ at different scan rates.

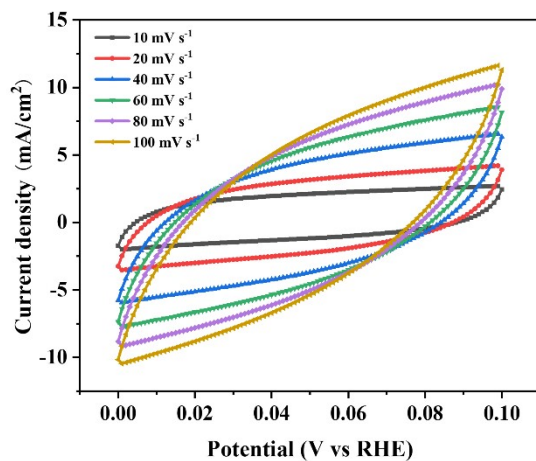


Figure S6. CV curves of MoO₂@MoS₂/CC-3 at different scan rates.

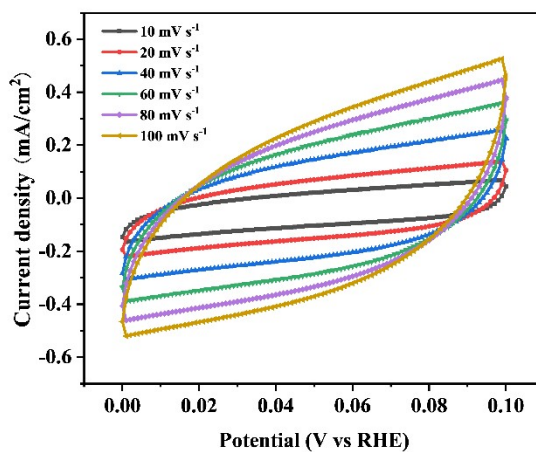


Figure S7. CV curves of MoO₂/CC at different scan rates.

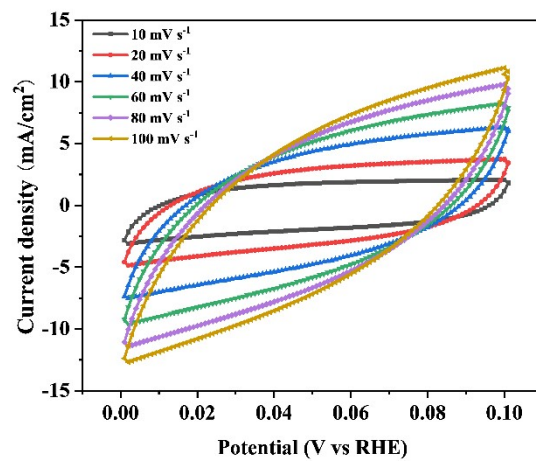


Figure S8. CV curves of MoS₂/CC at different scan rates.

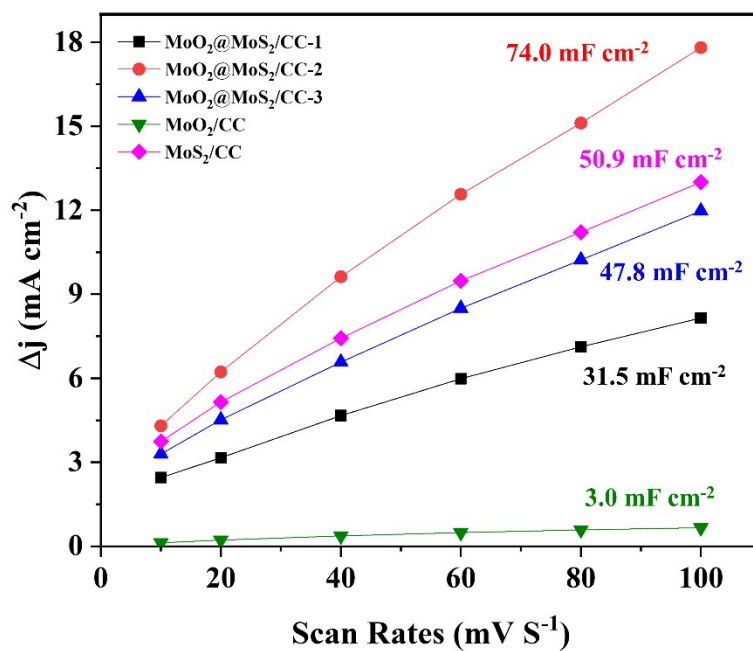


Figure S9. C_{dl} fitted by the different currents vs. scan rates.

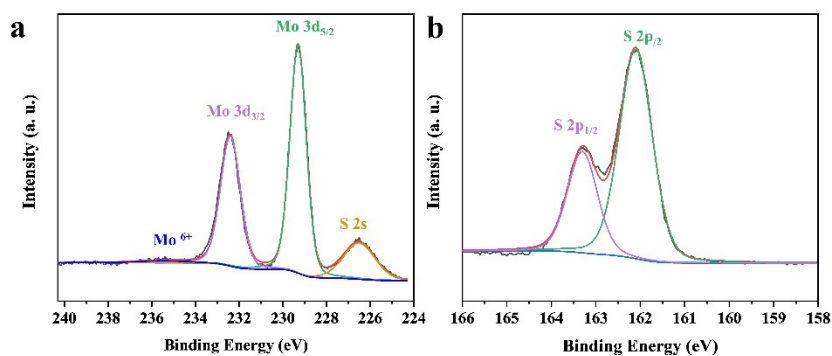


Figure S10. XPS spectra of (a) Mo 3d and (b) S 2p in MoO₂@MoS₂/CC-2 after stability test.

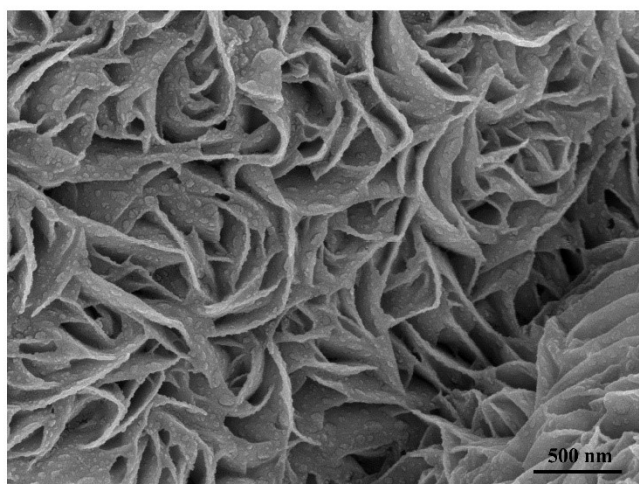


Figure S11. SEM image of MoO₂@MoS₂/CC-2 after stability test.