

**Supporting Information**

**Rationally designed Hierarchical C/TiO<sub>2</sub>/Ti  
multilayer Core-sheath Wires for High-performance  
Energy Storage Devices**

*Wei Cao, Yun Gong, Wenhao Wang, Mingzhou Chen, Junhe Yang, Yuhua Xue\**

-----  
Mr W. Cao, Y. Gong, W.H. Wang, M.Z. Chen, Prof. J.H. Yang, Prof. Y.H. Xue,

School of Materials Science and Engineering

University of Shanghai for Science and Technology

516 Jungong Road, Shanghai 200093.

Email: xueyuhua@usst.edu.cn

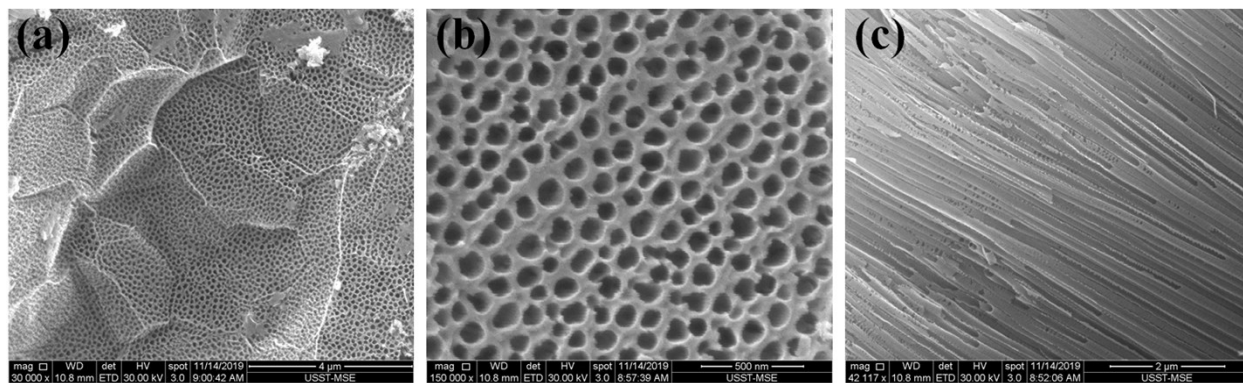


Figure S1. (a,b) Top-view and (c) side view SEM images of TiO<sub>2</sub>/Ti core-sheath wire.

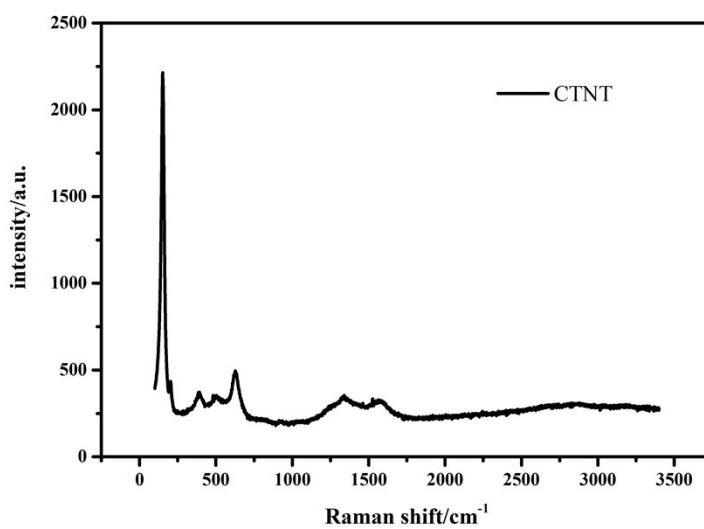


Figure S2. Raman spectrum of CTNT.

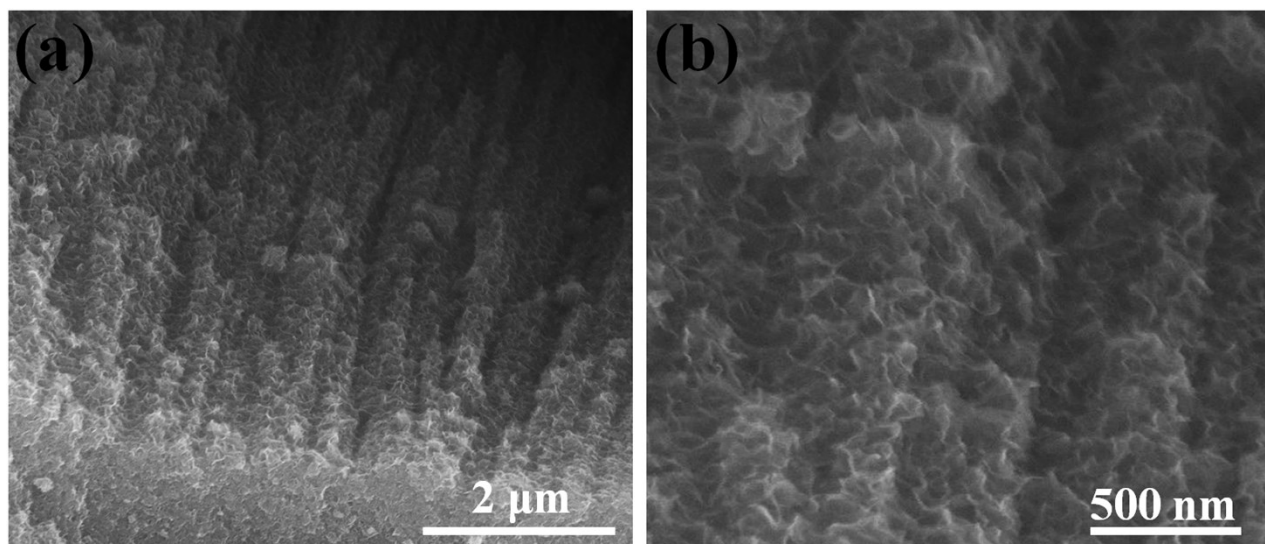


Figure S3. Side view SEM image of MoS<sub>2</sub>@CTNT core-sheath wire.

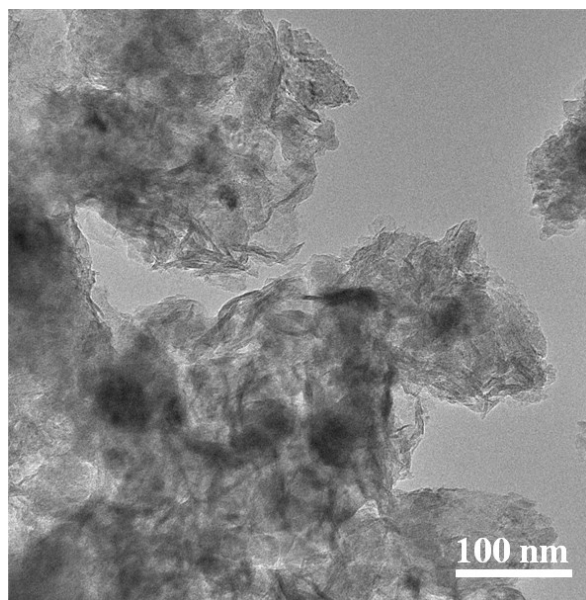


Figure S4. TME image of MoS<sub>2</sub> from MoS<sub>2</sub>@CTNT core-sheath wire

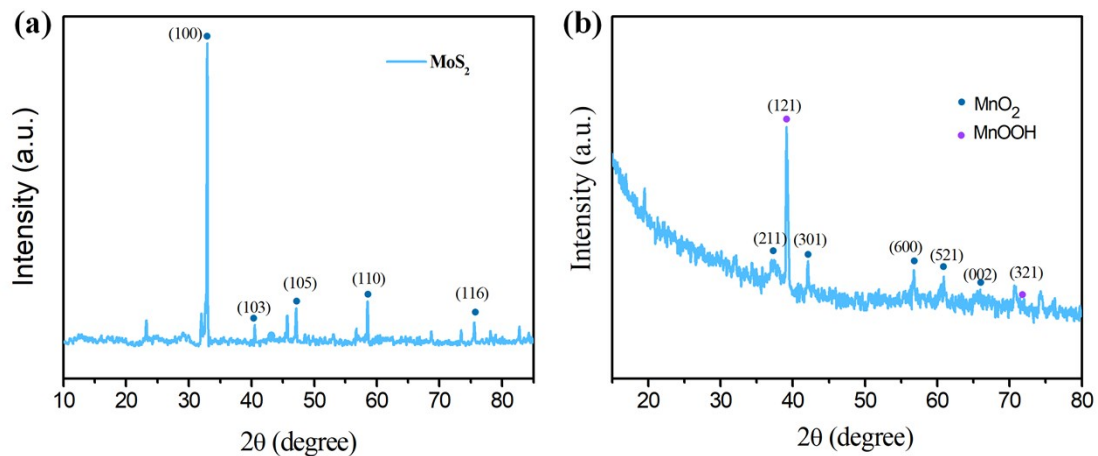


Figure S5. XRD patterns of (a)  $\text{MoS}_2$ @CTNT (b)  $\text{MnO}_2$ @CTNT

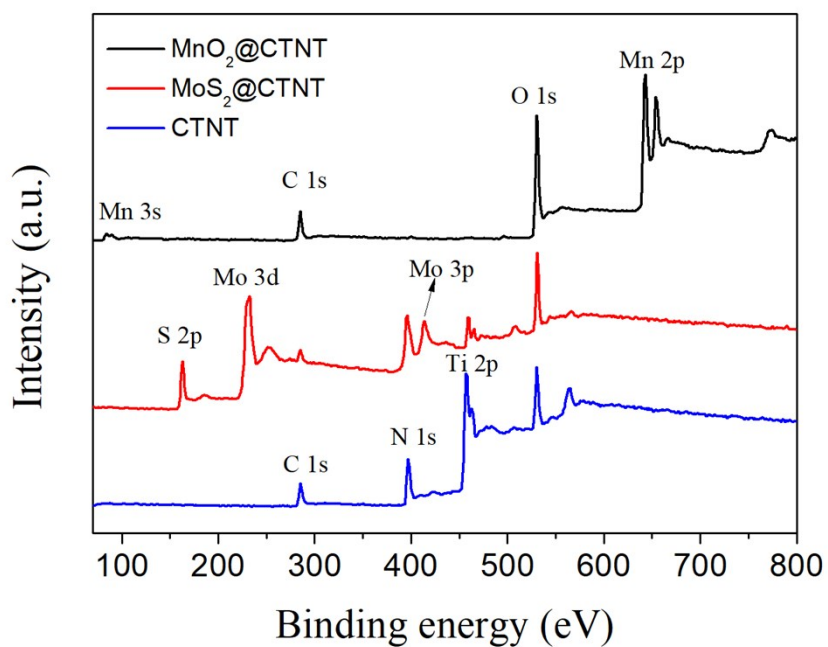


Figure S6. The survey XPS spectra of CTNT,  $\text{MoS}_2$ @CTNT,  $\text{MnO}_2$ @CTNT.