

## SUPPORTING INFORMATION

### **Structure and mechanism behind the inhibitory effect of water soluble metalloporphyrins on A $\beta$ <sub>1-42</sub> aggregation**

Qianqian Zhang<sup>a</sup>, Yiqing Liu<sup>a</sup>, Jinming Wu<sup>b</sup>, Lizheng Zeng<sup>a</sup>, Jingjing Wei<sup>a</sup>, Shitao  
Fu<sup>a</sup>, Huixian Ye<sup>c</sup>, Zhonghong Gao<sup>\*a</sup>, Hailing Li<sup>\*a</sup>

<sup>a</sup> Hubei Key Laboratory of Bioinorganic Chemistry & Materia Medica, School of Chemistry and Chemical Engineering, Huazhong University of Science & Technology, Wuhan, 430074, P. R. China

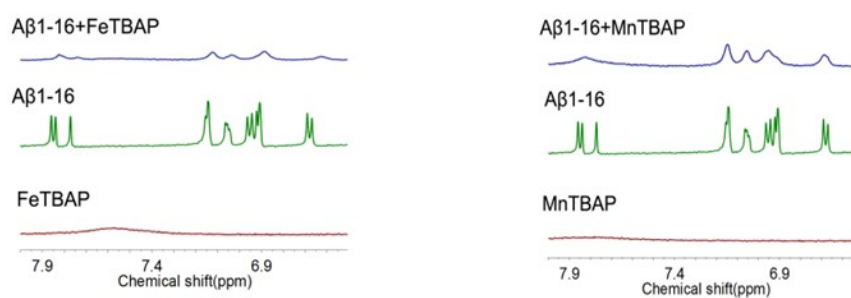
<sup>b</sup> Department of Biology and Chemistry, Paul Scherrer Institute, 5232 Villigen, Switzerland

<sup>c</sup> School of Chemistry and Chemical Engineering, Jinggangshan University, Ji'an, Jiangxi 343009, People's Republic of China.

\*Corresponding Author:

Dr. Zhonghong Gao  
Tel: 86-27-87543532  
Fax: 86-27-87543632  
E-mail: [zhgao144@hust.edu.cn](mailto:zhgao144@hust.edu.cn)

Dr. Hailing Li  
Tel: 86-27-87543532  
Fax: 86-27-87543632  
E-mail: [lihailing86@hust.edu.cn](mailto:lihailing86@hust.edu.cn)



**Figure S1**  $^1\text{H}$  NMR spectra of  $\text{A}\beta_{1-16}$  in the presence or absence of FeTBAP and MnTBAP in deuterated PB (10 mM, pH=7.4). Before experiment, the samples were incubated at 37 °C for 1 h. The final concentration of  $\text{A}\beta_{1-16}$  or porphyrin was 200  $\mu\text{M}$ .