

Figure legends:

Figure S1 SEM figure of the sample synthesized with indium chloride as precursor.

Figure S2 Response of different amount of NaCl of the sensors to 100 ppm acetone as a function of the working temperature.

Figure S3 dynamic response-recovery curves of all sensors at 240 °C.

Figure S4 The response profile of all the sensors towards different gases (concentration: 100 ppm) at 240 °C.

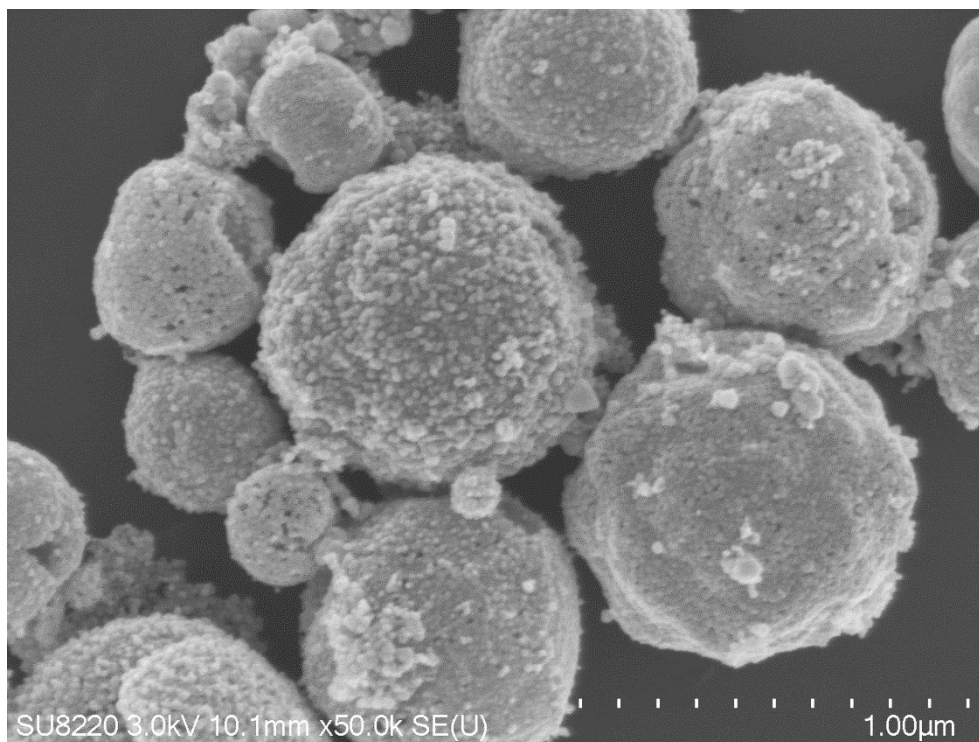


Figure S1 SEM figure of the sample synthesized with indium chloride as precursor.

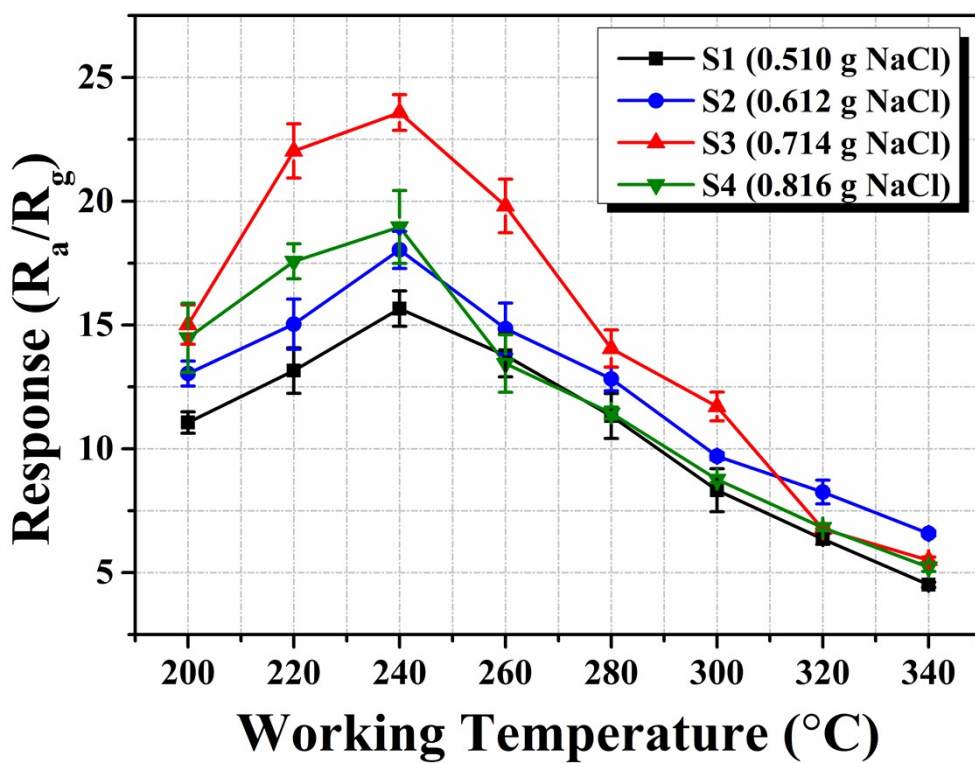


Figure S2 Response of different amount of NaCl of the sensors to 100 ppm

acetone as a function of the working temperature.

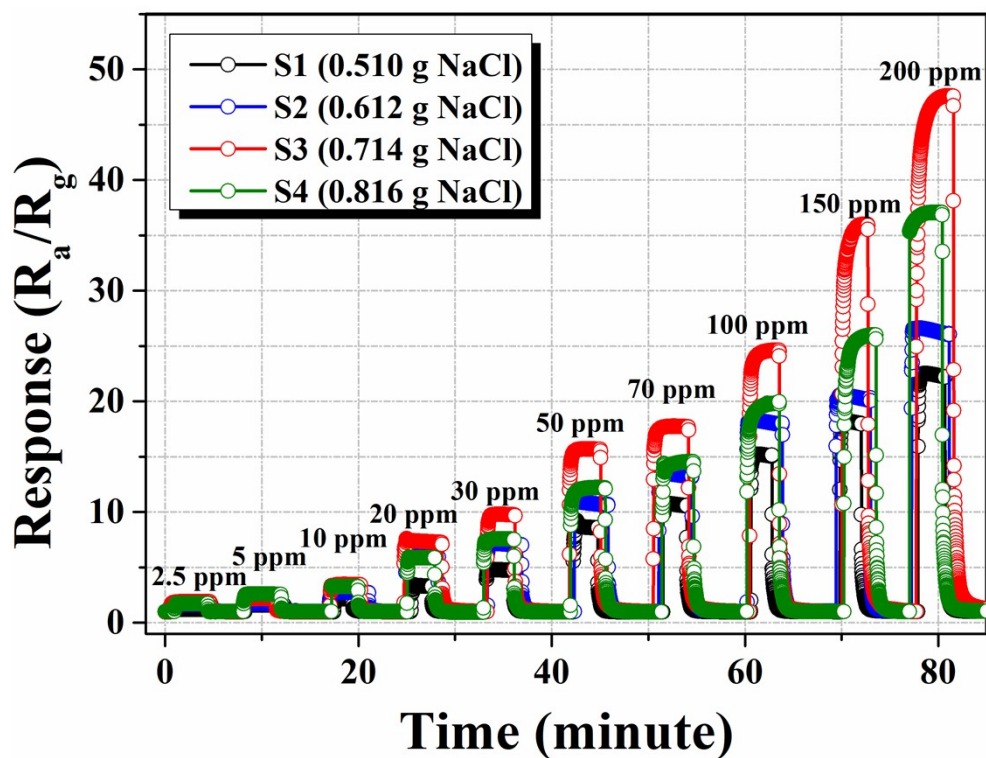


Figure S3 dynamic response-recovery curves of all sensors at 240 °C (100 ppm acetone).

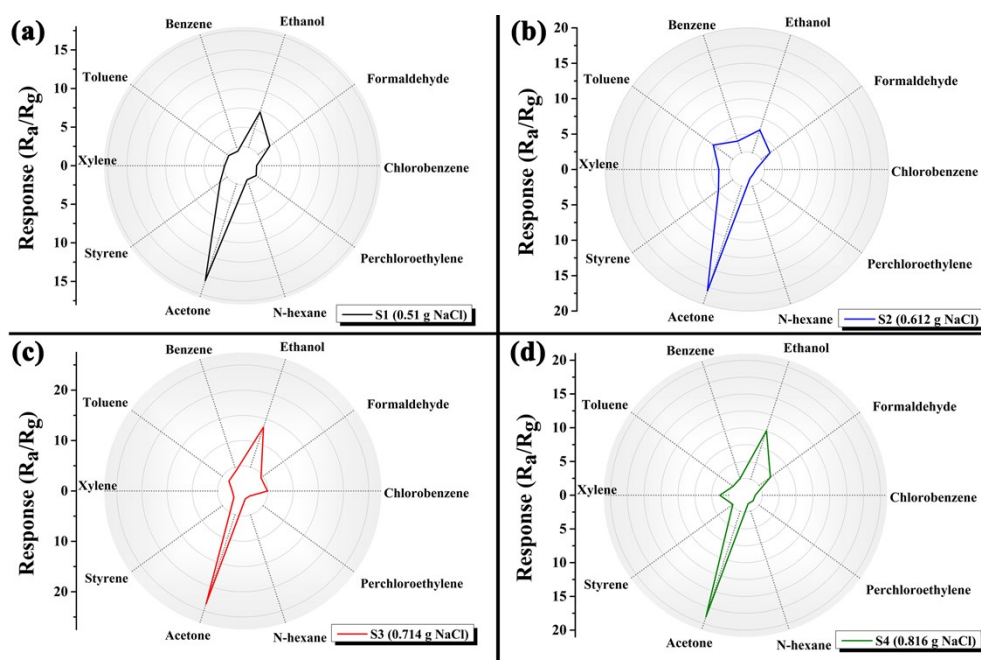


Figure S4 The response profile of all the sensors towards different gases

(concentration: 100 ppm) at 240 °C.