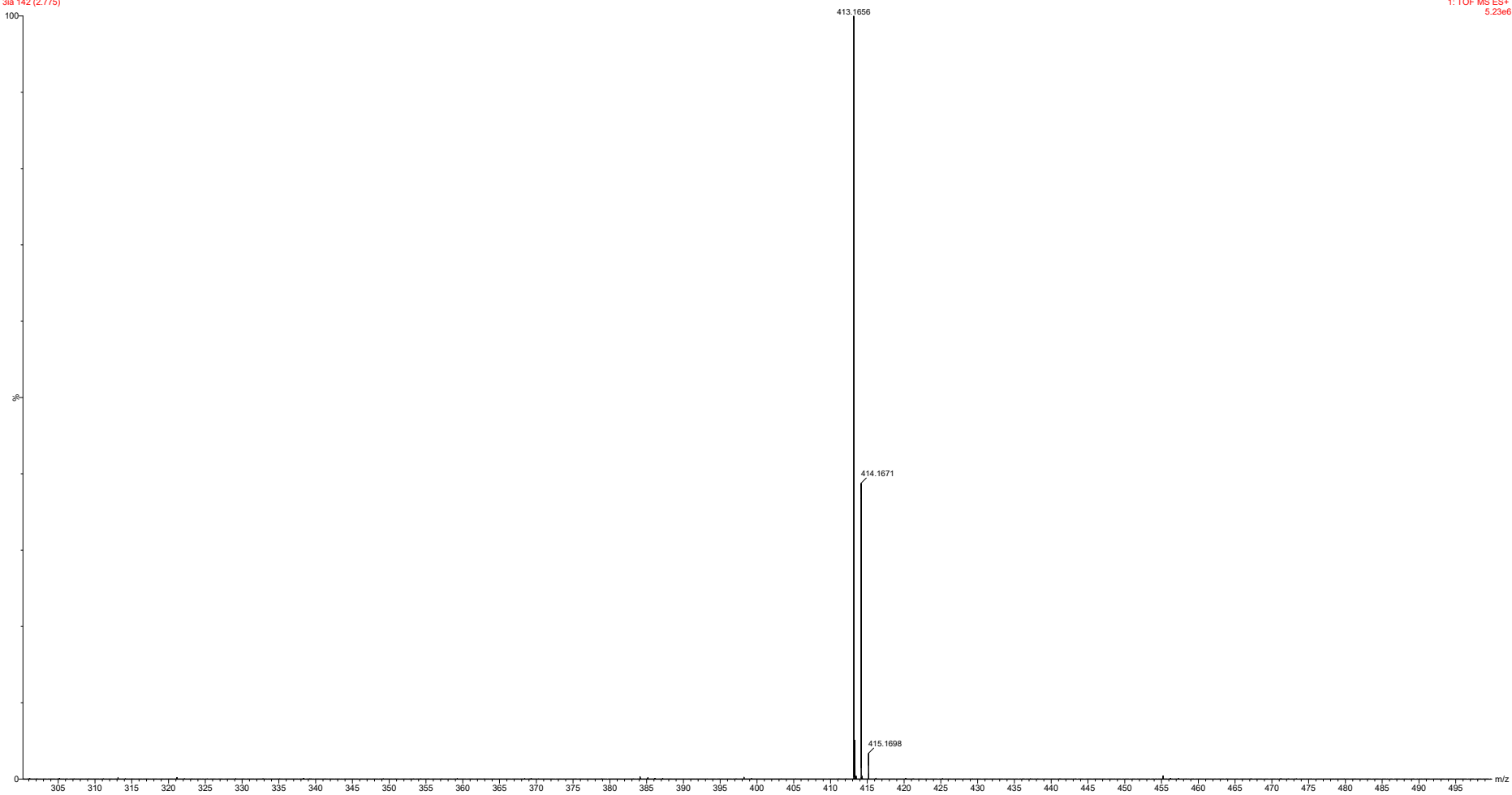


3ia

3ia
3ia 142 (2.775)

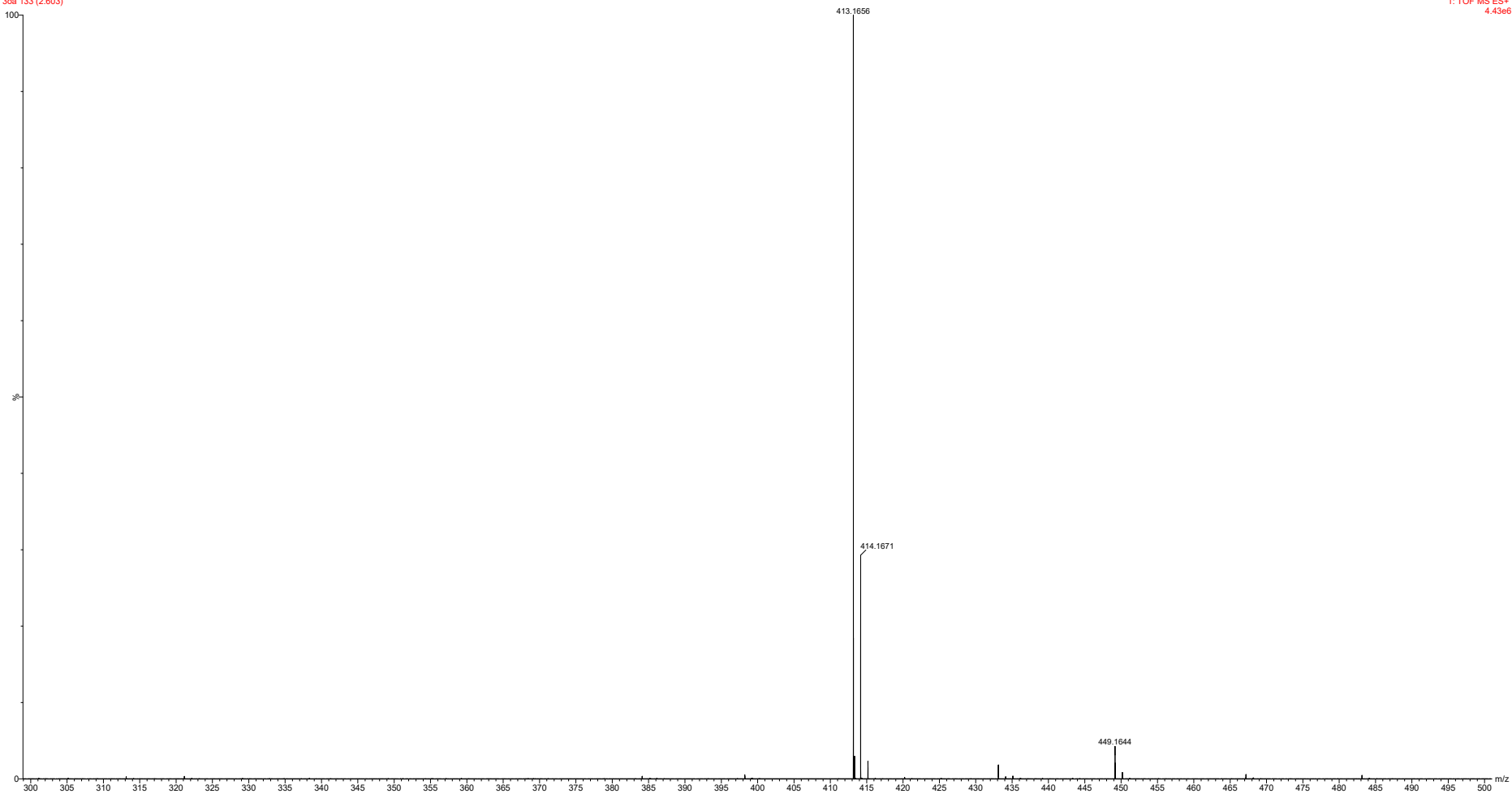
1: TOF MS ES+
5.23e6



30a

30a 133 (2.603)

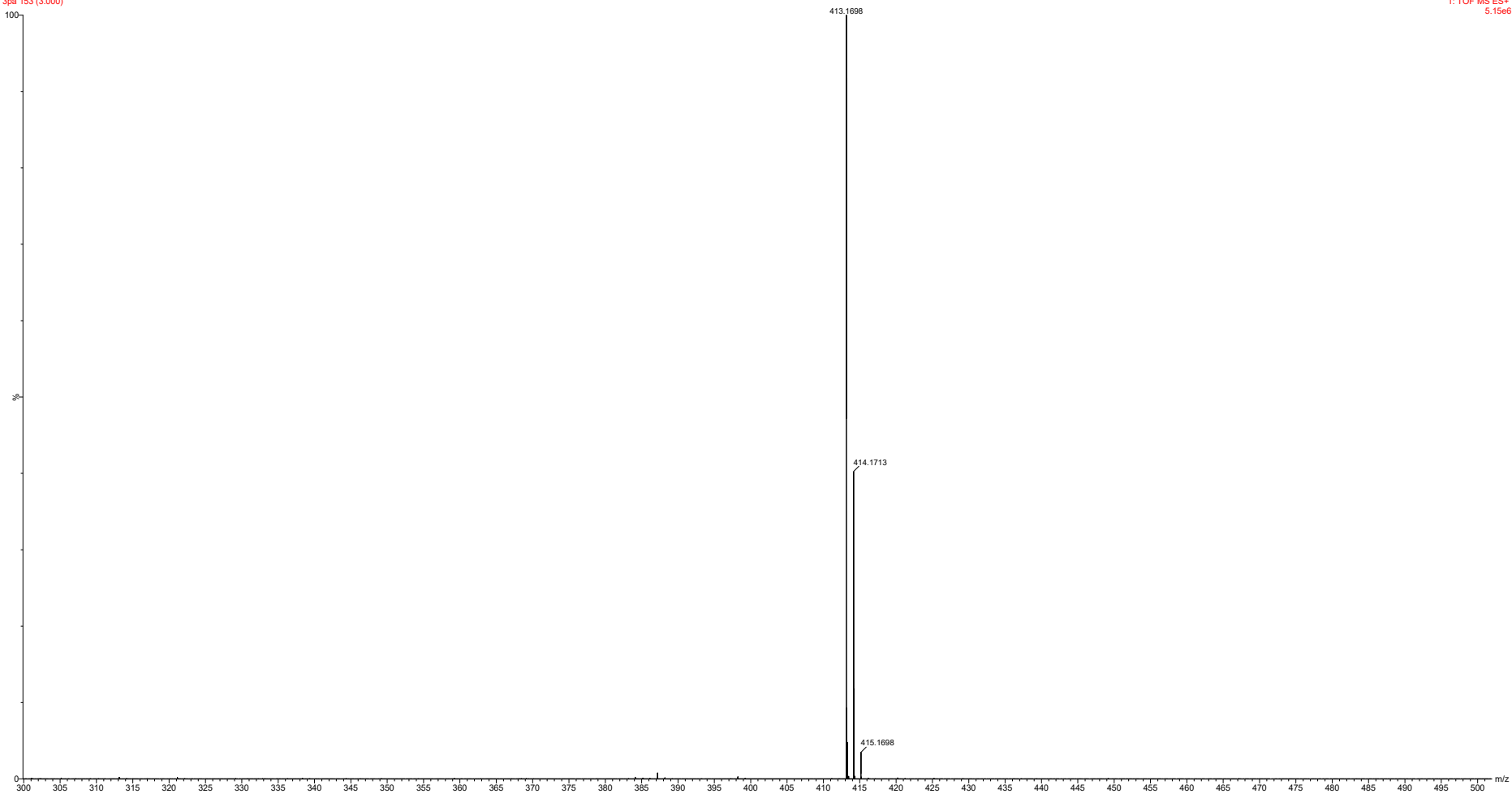
1: TOF MS ES+
4.43e6



3pa

3pa 153 (3.000)

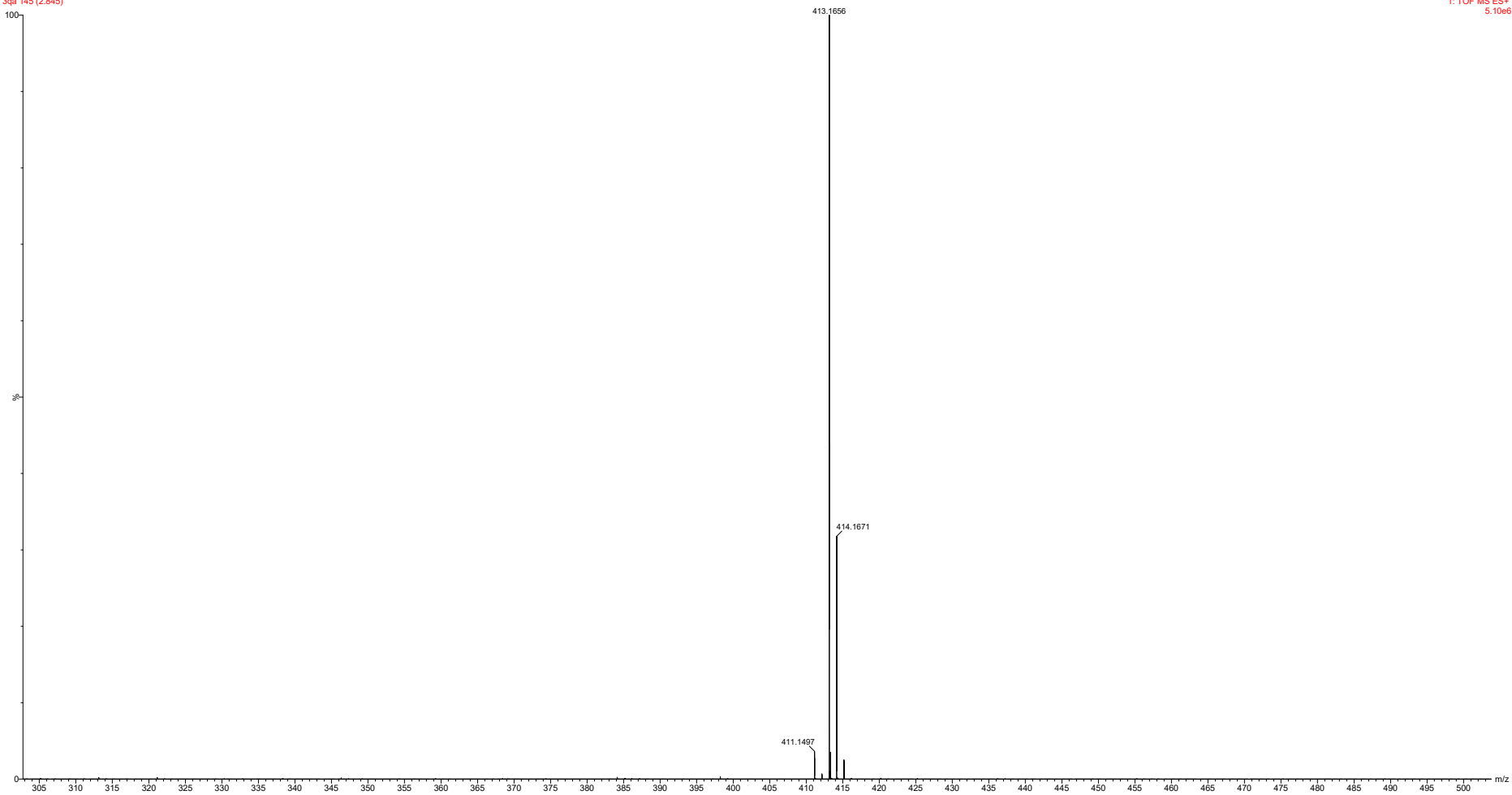
1: TOF MS ES+
5.15e6



3qa

3qa
3qa 145 (2.845)

1: TOF MS ES+
5.10e6



3ra

3ra
3ra 145 (2.845)

1: TOF MS ES+
4.82e6

