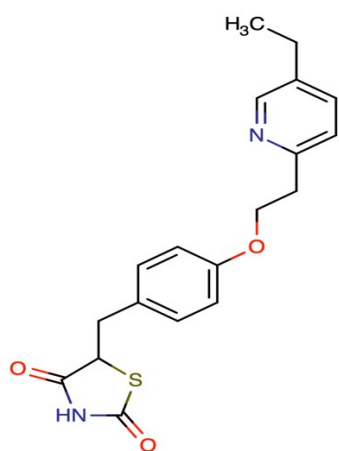
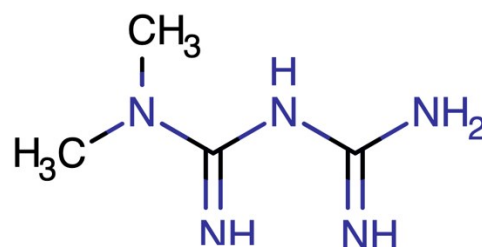


Supplementary data



Pioglitazone



Alogliptin

Figure (1S): chemical structures of Pioglitazone and Alogliptin.

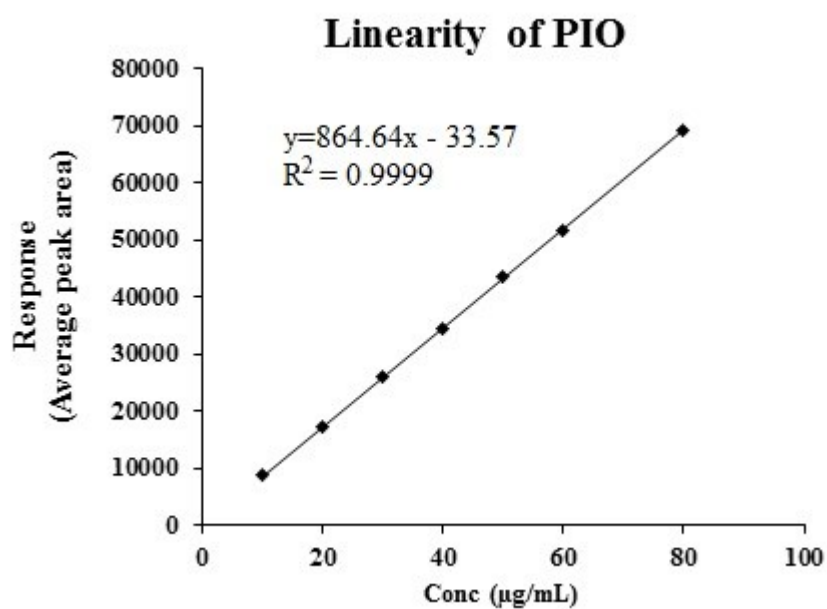


Figure (2S): HPLC calibration curve for PIO.

Table (1S): System suitability parameters for the determination of ALG and PIO by proposed HPLC method.

System suitability parameters	Result N=(6) Mean \pm RSD	
	ALG	PIO
Retention time	1.17 \pm 0.00	2.82 \pm 0.09
Tailing factor	1.00 \pm 0.01	1.01 \pm 0.01
Theoretical plates	4771.28 \pm 29.73	4265.18 \pm 180.07
Capacity factor (K')	4.31 \pm 0.00	13.84 \pm 0.01
Rs (resolution)	6.6	