

Colony morphology and phylogenetic analysis of *Pseudomonas psychrophila* strain A20-18 and B21-3

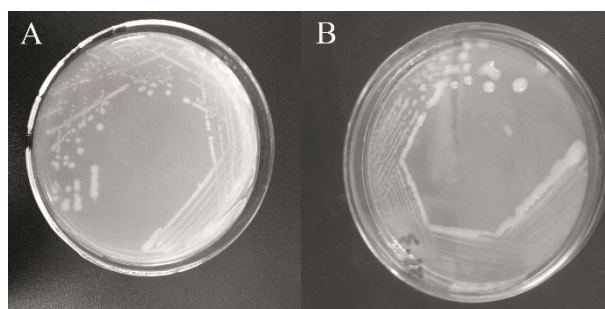


Figure S1 Colony morphology of strain A20-18 (A) and B21-3(B)

In the stable phase, strain A20-18 and strain B21-3 formed round colonies with diameters of 3-4 mm and 3-5 mm respectively. The colonies were milky white with neat and moist edges.

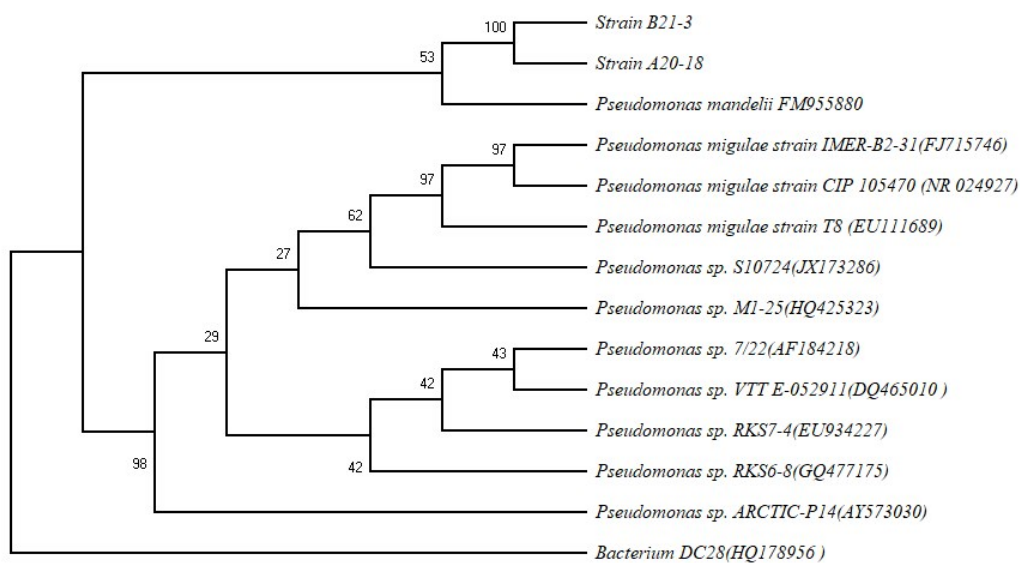


Figure S2 Phylogenetic tree of two *Pseudomonas psychrophila* strains

Strain A20-18 and strain B21-3 have high homology and both belong to the genus *Pseudomonas*