

Electronic Supporting Information

Binder-free and high-loading sulfurized polyacrylonitrile cathode for lithium/sulfur batteries

Huihun Kim, Changhyeon Kim, Milan K. Sadan, Hyewon Yeo, Kwon-Koo Cho, Ki-Won Kim, Jou-Hyeon Ahn and Hyo-Jun Ahn*

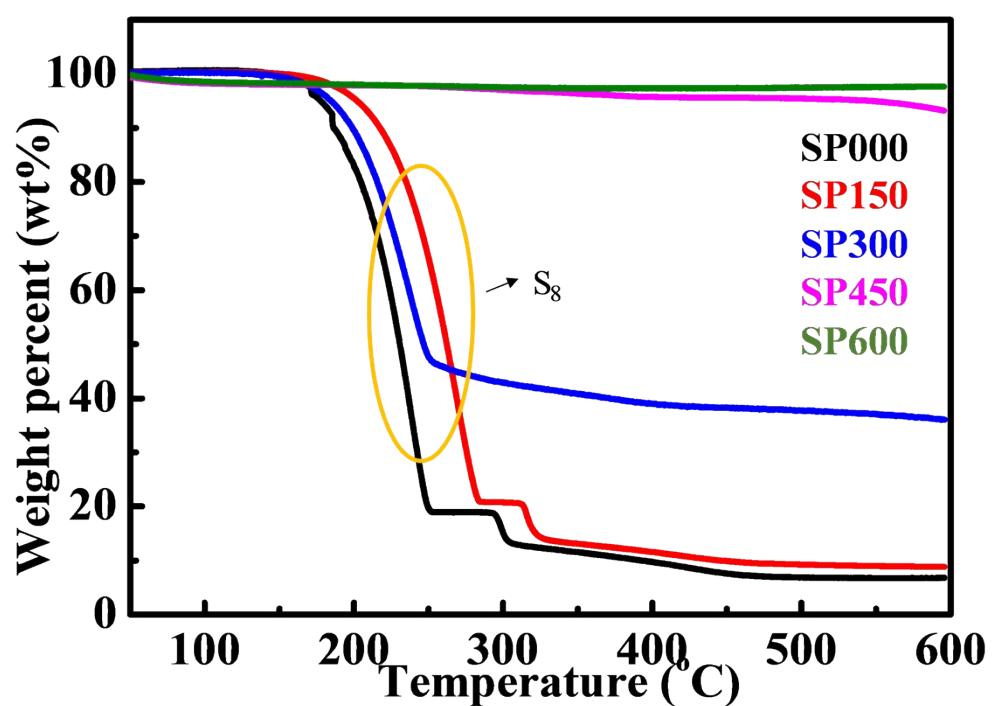
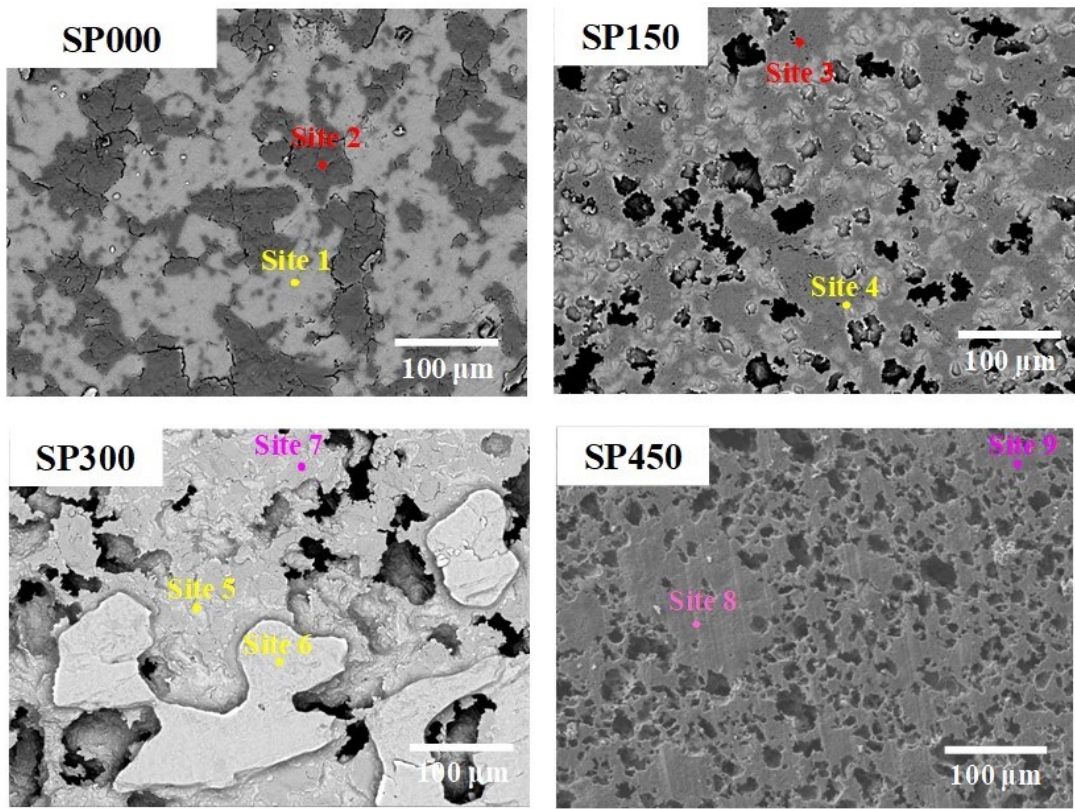


Fig. S1. TGA curves of SPpellet samples.



Unit : at%

| Sample/position | | N | C | S |
|-----------------|--------|-------|-------|------|
| SP000 | Site 1 | - | - | 100 |
| | Site 2 | 23.37 | 76.63 | - |
| SP150 | Site 3 | - | - | 100 |
| | Site 4 | 21.45 | 78.55 | - |
| SP300 | Site 5 | - | - | 100 |
| | Site 6 | - | - | 100 |
| | Site 7 | 6.21 | 72.7 | 21.5 |
| SP450 | Site 8 | 14.9 | 65.8 | 19.3 |
| | Site 9 | 14.7 | 64.5 | 20.8 |

Fig. S2. SEM images and EDS point mapping results for SPAN electrodes

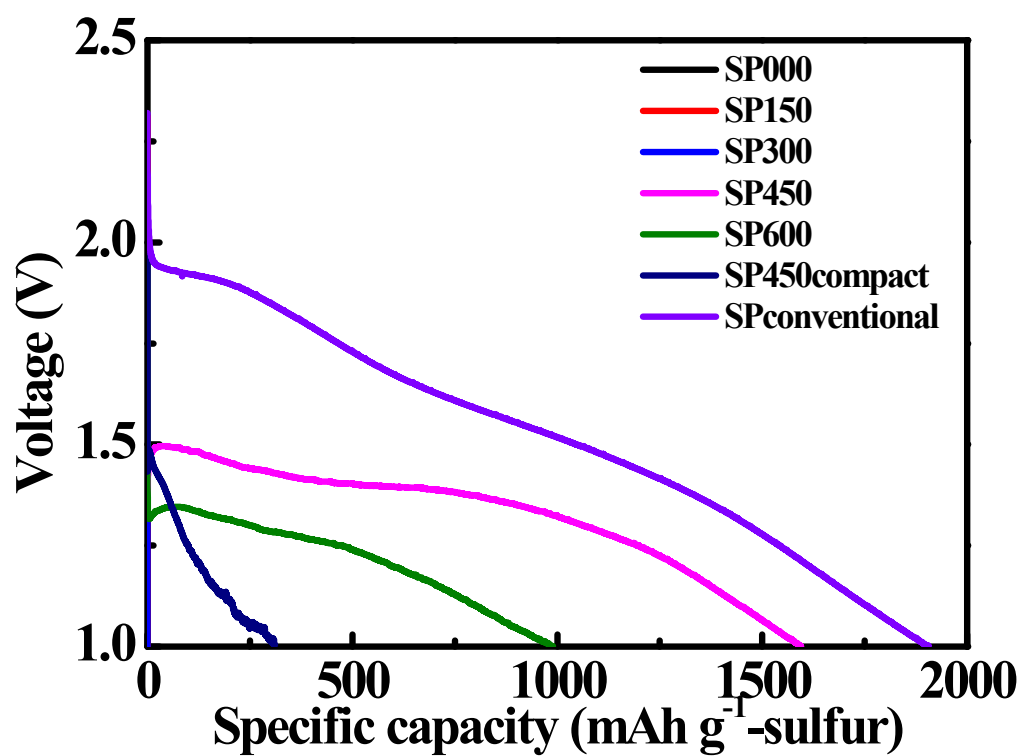


Fig. S3. Discharge-charge curves of various Li/SPAN cells at current density of 15 mA g⁻¹.

electrode-

Table S1. Components of Li/SPAN cells.

| Sample name | Cathode | | | Total cathode | Current collector Al foil | Electrolyte 1 M LiPF ₆ + EC/DEC | Separator Celgard 2400 | Anode Lithium foil | Capacity Based on sulfur | Capacity Based on electrode without current collector | Capacity Based on electrode with current collector |
|-------------------|-------------------------|-------------------------|--------------------------|---------------|------------------------------|---|---------------------------|-----------------------|-----------------------------|--|---|
| | Active material (SP450) | Binder (β-cyclodextrin) | conducting agent (MWCNT) | | | | | | | | |
| SP450compact | 24.1 mg | - | - | 24.1 mg | - | 30 mg | 2.1 mg | 12.6 mg | 321 mAh g ⁻¹ | 132 mAh g ⁻¹ | 132 mAh g ⁻¹ |
| SP450conventional | 0.776 mg | 0.097 mg | 0.097 mg | 0.97 mg | 3.83 mg | 10 mg | 2.1 mg | 12.6 mg | 1931 mAh g ⁻¹ | 649 mAh g ⁻¹ | 131 mAh g ⁻¹ |
| SP450 | 16.37 mg | - | - | 16.37 mg | - | 30 mg | 2.1 mg | 12.6 mg | 1656 mAh g ⁻¹ | 679 mAh g ⁻¹ | 679 mAh g ⁻¹ |

Table S2. Comparison of previous high loading sulfur with this report.

| Sulfur loading mg cm⁻² | E/S ratio uL/mg | Reversible capacity mAh g⁻¹-sulfur (mAh cm⁻²) | Ref. |
|--|----------------------------|--|-------------|
| 10.2 | 20 | 600 | 1 |
| 8 | 15 | 1000 (8) | 2 |
| 13.2 | 15 | 791 (7) | 3 |
| 9.1 | 9 | 400 | 4 |
| 10 | 5.7 | 1000 | 5 |
| 13.5 | 3 | 600 | 6 |
| 6.87 | 3.7 | 1230 | This work |

E/S ratio: Electrolyte/sulfur ratio

Reference

- 1 C. Chen, J. Jiang, W. He, W. Lei, Q. Hao and X. Zhang, *Adv. Funct. Mater.*, 2020, **30**, 1909469.
- 2 J. Shi, Q. Kang, Y. Mi and Q. Xiao, *Electrochim. Acta*, 2019, **324**, 134849.
- 3 J. Wang, G. Yang, J. Chen, Y. Liu, Y. Wang, C.-Y. Lao, K. Xi, D. Yang, C.J. Harris, W. Yan, S. Ding and R.V. Kumar, *Adv. Energy Mater.*, 2019, **9**, 1902001.
- 4 J. Liao, J. Wang, Z. Liu and Z. Ye, *ACS Appl. Energy Mater.*, 2019, **2**, 6732-6740.
- 5 X. Yang, X. Gao, Q. Sun, S.P. Jand, Y. Yu, Y. Zhao, X. Li, K. Adair, L.-Y. Kuo, J. Rohrer, J. Liang, X. Lin, M.N. Banis, Y. Hu, H. Zhang, X. Li, R. Li, H. Zhang, P. Kaghazchi, T.-K. Sham and X. Sun, *Adv. Mater.*, 2019, **31**, 1901220
- 6 G. Li, W. Lei, D. Luo, Y. Deng, Z. Deng, D. Wang, A. Yu and Z. Chen, *Energy Environ. Sci.*, 2018, **11**, 2372-2381.