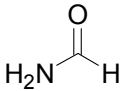
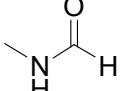
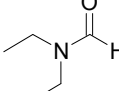
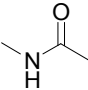
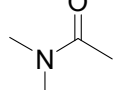
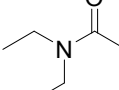
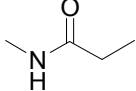
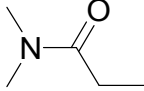
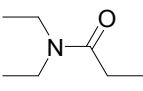
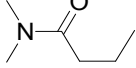


# A New Solvate of Clonixin and a Comparison of the Two Clonixin Solvates

*Yunping Zhoujin*<sup>1</sup>, *Dr. Mingtao Zhang*<sup>2</sup>, *Dr. Sean Parkin*<sup>3</sup>, *Dr. Tonglei Li*<sup>4</sup>, *Dr.*

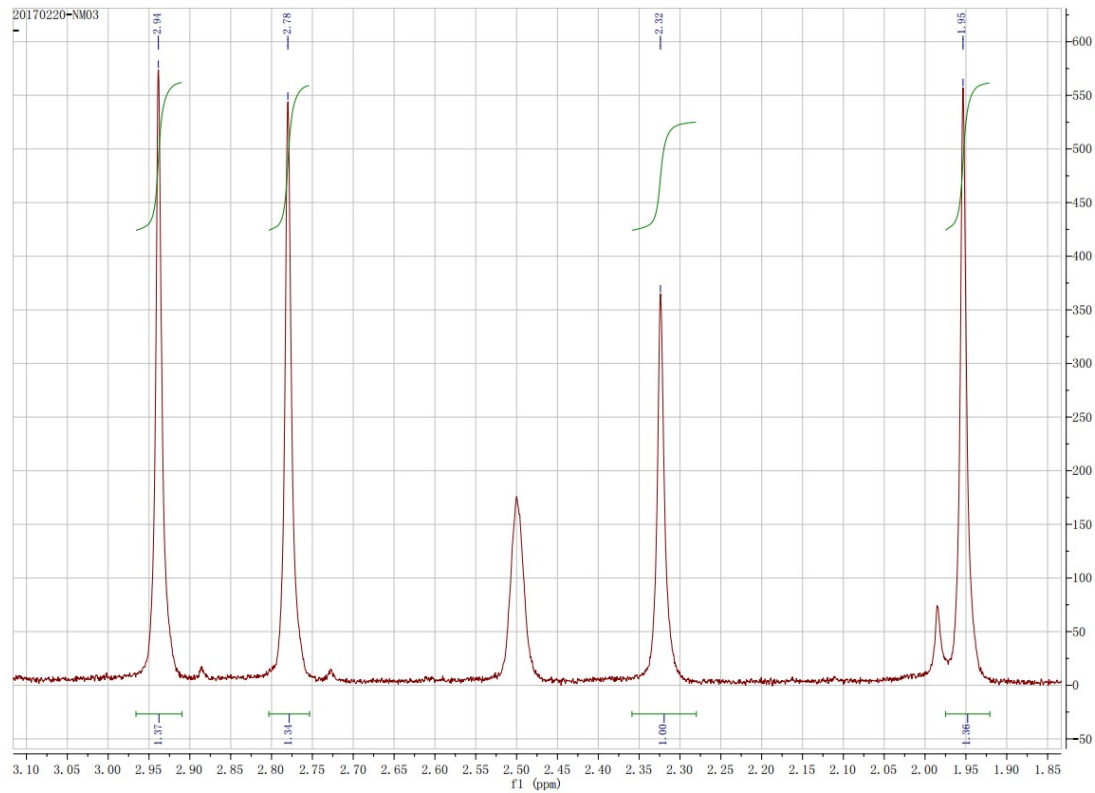
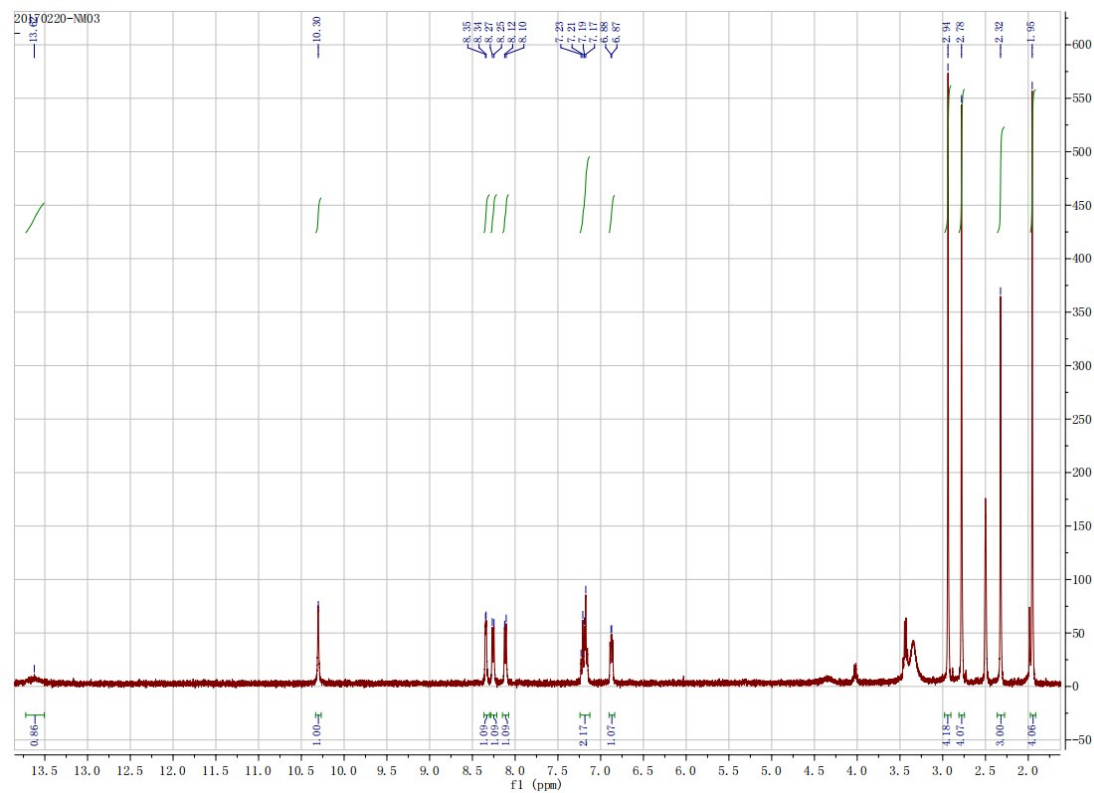
*Faquan Yu*<sup>\*1</sup>, *Dr. Sihui Long*<sup>\*1</sup>

Table S1. The solvents used for crystal screening

Solvents		
		
formamide	methylformamide	N,N-diethylformamide
		
N-methyl-acetamide	N,N-dimethyl-acetamide	N,N-diethylacetamide
		
N-methylpropionamide	N,N-dimethyl-propionamide	N,N-diethylpropionamide
		
N,N-dimethyl-butamide		

In the above solvents used for crystal growth of CLX, no solvates have been obtained.

Figure S1. The  $^1\text{H}$  NMR spectrum of CLX.DMA and the zoomed in region showing the 1:1:1:1 ratio of the  $\text{CH}_3$  from CLX and three methyl groups from DMA.



The ratio of CLX and DMA is close to 1:1, but not exactly 1:1. The discrepancy is likely due to surface solvent on the crystal.