

Magnetic Orientation of Exchange-Coupled L1₀- FePt/Co Core-Shell Nanoparticles with variable Co Thickness

Xin Liu,^a Shulan Zuo,^a Hui wang,^a Tianli Zhang,^a Ying Dong^a and Chengbao Jiang^{*a}

^aSchool of Materials Science and Engineering, Beihang University, Beijing 100191, P. R. China.

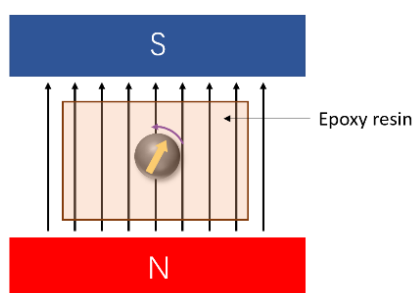


Fig. S1 Diagram of orientation method.

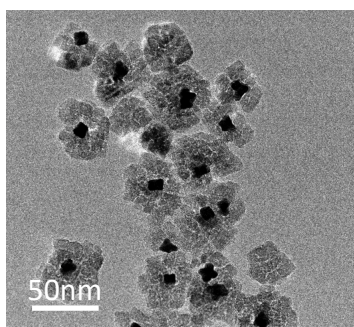


Fig. S2 TEM of MgO coated FePt nanoparticles.

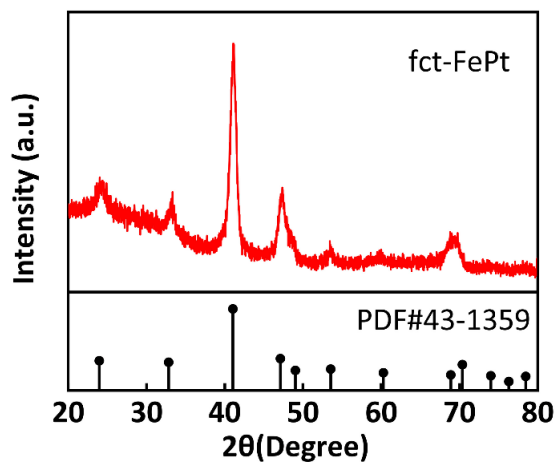


Fig. S3 XRD patterns of L1₀-FePt nanoparticles.

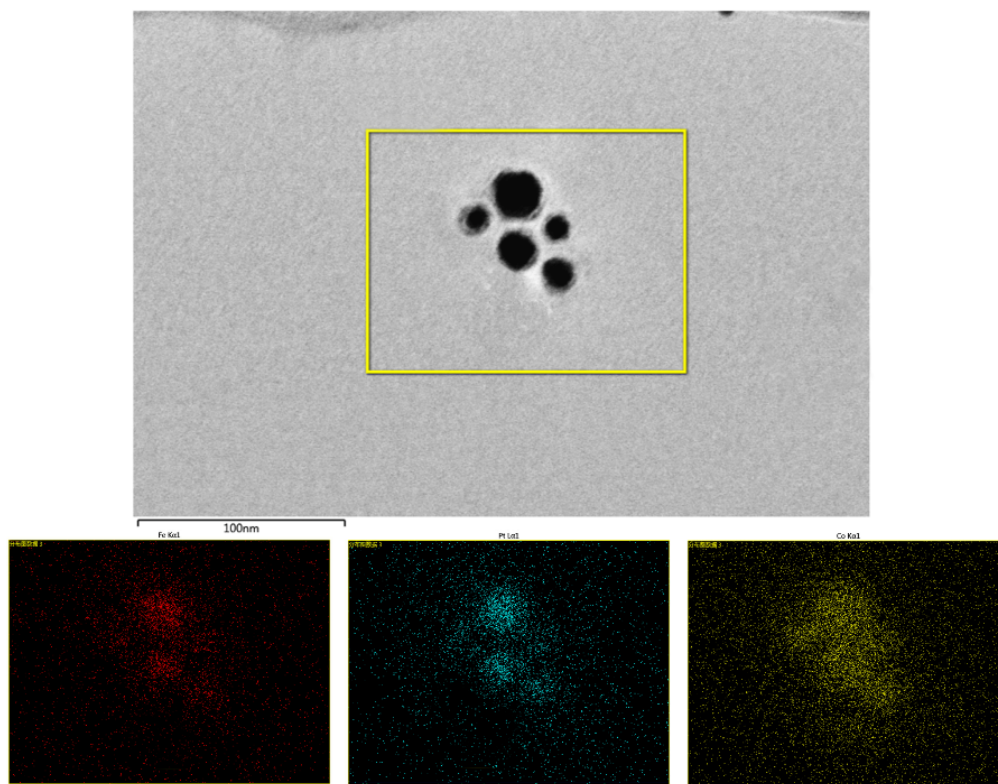


Fig S4 Mapping of FePt/Co nanoparticles with Co thickness of 2.2 nm