

Supporting Information

In-situ form graphitic C_3N_4 -PDOL composite interlayer toward stable lithium metal

anodes

Zilong Zhuang,^{1,2} Yating Tang,¹ Bowei Ju,^{1,*} Tete He¹, Feiyue Tu^{1,*}

¹Changsha Research Institute of Mining and Metallurgy, Changsha, 410012, China

²Department of Chemistry, Fudan University, Shanghai, 200082, China

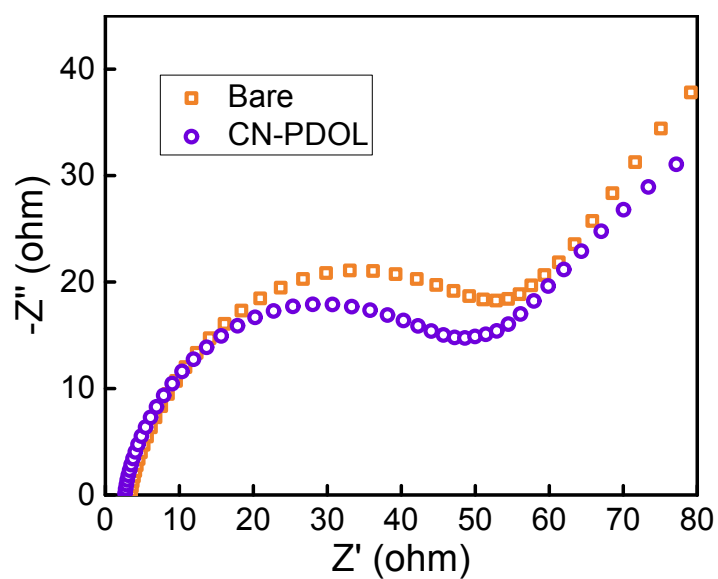


Fig. S1 EIS spectra of NMC532|Bare-Li and NMC532|CN-PDOL-Li before cycling.

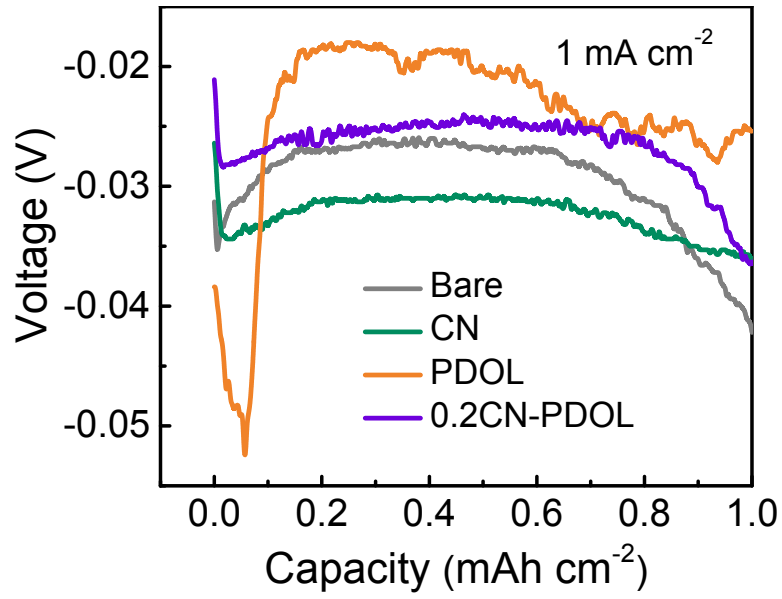


Fig. S2 Voltage profiles during Li nucleation on different samples at 1 mA cm^{-2} to 1 mAh cm^{-2} .

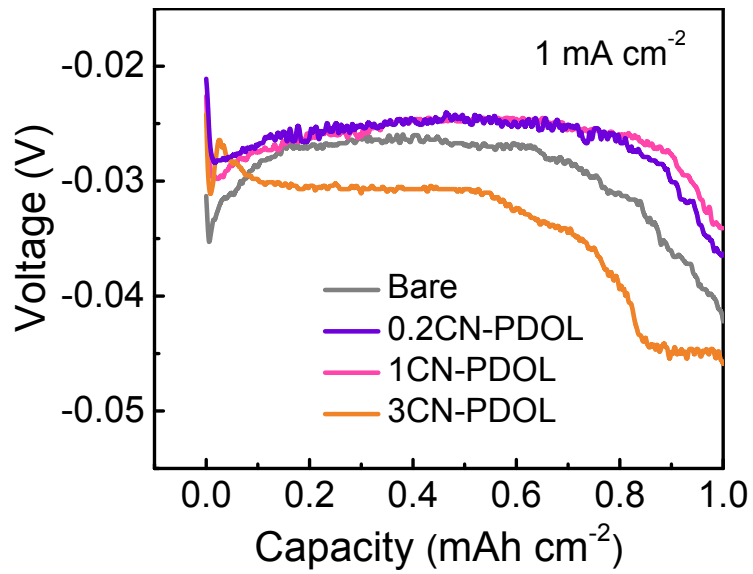


Fig. S3 Voltage profiles during Li nucleation on bare Li and CN-PDOL-Li at 1 mA cm^{-2} to 1 mAh cm^{-2} .

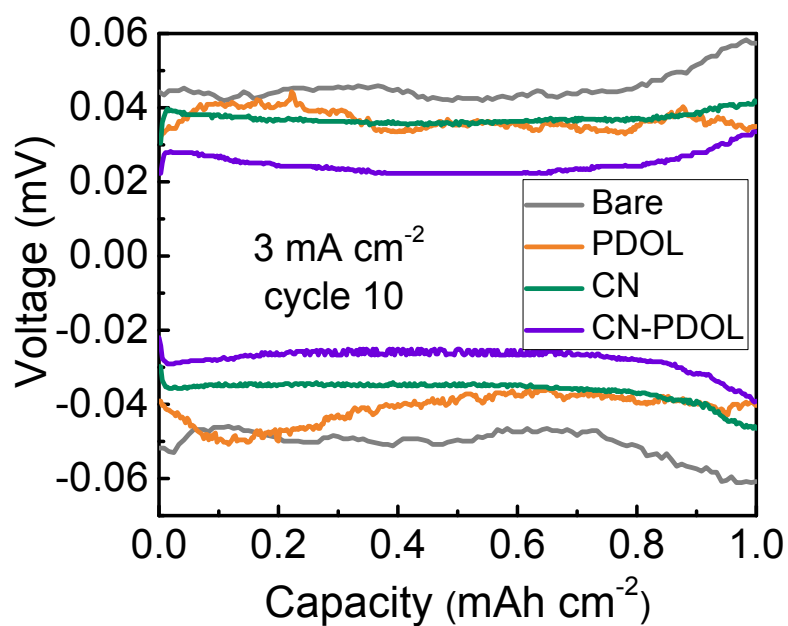


Fig. S4 Voltage profiles at 10th cycle of bare-Li, PDOL-Li, CN-Li, CN-PDOL-Li with a cycling capacity of 3 mA cm^{-2} to 1 mAh cm^{-2} .

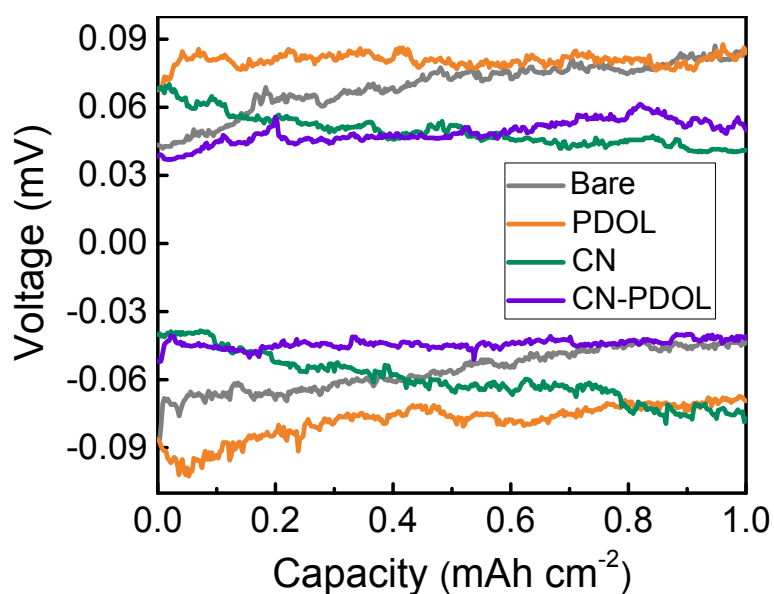


Fig. S5 Voltage profiles of bare-Li, PDOL-Li, CN-Li, CN-PDOL-Li with a cycling capacity of 3 mA cm^{-2} for a total 1 mAh cm^{-2} of Li at 200th cycle.

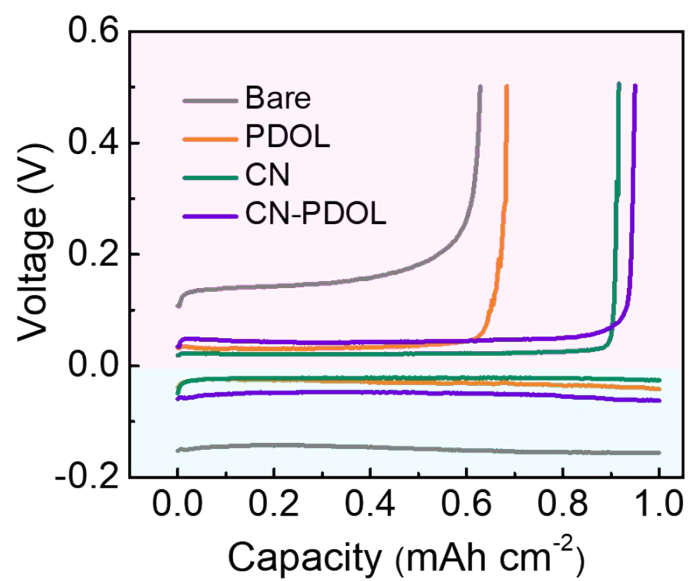


Fig. S6 charge-discharge profiles of Li-Cu cells with a cycling capacity of 1 mA cm⁻² for a total 1 mAh cm⁻² of Li at 40th cycle.

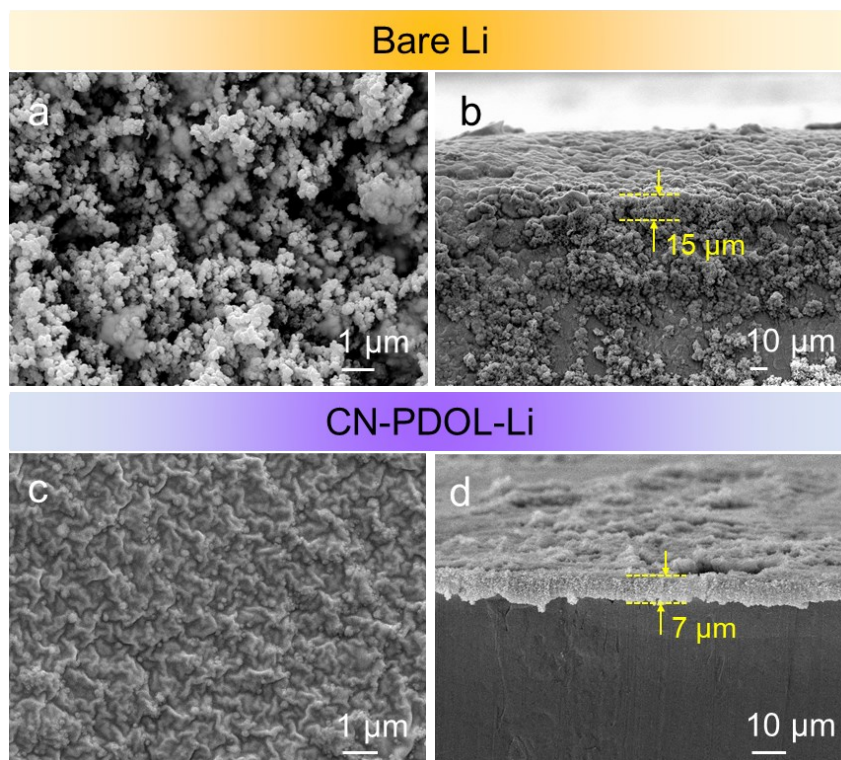


Fig. S7 SEM images of Li deposited on bare Li and CN-PDOL-Li of Li-Li symmetric cells after 10 cycles with a current density of 1 mA cm^{-2} for a total 1 mAh cm^{-2} of Li. (a) Top view and (b) cross-section of bare Li; (c) Top view and (d) cross-section of CN-PDOL-Li.

Table S1 The cycle performance comparison of reported Li symmetry cells and this work.

Electrode	Cycle	Overpotential (mV)	Current density (mA cm ⁻²)	Capacity (mAh cm ⁻²)	Ref.
PDOL-Li	200	50	1	1	1
SR-G-Li	400	50	5	1	2
NPCC-Li	240	100	5	1	3
M-Li	200	50	1	1	4
Li _x Si-Li	400	~120	1	1	5
LDP-Li	220	~20	1	1	6
3D L-G-Li	80	200	5	1	7
CN-PDOL-Li	850	70	3	1	This work

References

- 1 Q. Zhao, X. Liu, S. Stalin, K. Khan and L. A. Archer, *Nat. Energy*, 2019, **4**, 365-373.
- 2 M. Bai, K. Xie, K. Yuan, K. Zhang, N. Li, C. Shen, Y. Lai, R. Vajtai, P. Ajayan and B. Wei, *Adv. Mater.*, 2018, **30**, 1801213.
- 3 K. Li, Z. Hu, J. Ma, S. Chen, D. Mu and J. Zhang, *Adv. Mater.*, 2019, **31**, e1902399.
- 4 D. Wang, C. Luan, W. Zhang, X. Liu, L. Sun, Q. Liang, T. Qin, Z. Zhao, Y. Zhou, P. Wang and W. Zheng, *Adv. Energy Mater.*, 2018, **8**, 1800650.
- 5 W. Tang, X. Yin, S. Kang, Z. Chen, B. Tian, S. L. Teo, X. Wang, X. Chi, K. P. Loh, H. W. Lee and G. W. Zheng, *Adv. Mater.*, 2018, **30**, 1801745.
- 6 X. Shen, T. Qian, P. Chen, J. Liu, M. Wang and C. Yan, *ACS Appl. Mater. Interfaces*, 2018, **10**, 30058-30064.
- 7 W. Deng, X. Zhou, Q. Fang and Z. Liu, *Adv. Energy Mater.*, 2018, **8**, 1703152.