

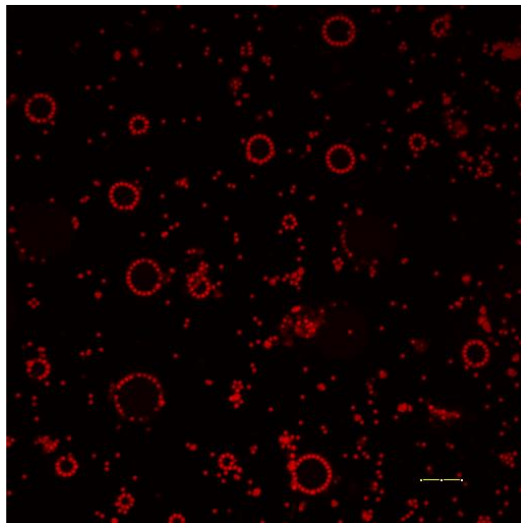
Supporting information

Curved Colloidal Crystals of Discoids at near-Critical Liquid-Liquid Interface

Ashis Mukhopadhyay

Department of Physics, Wayne State University, Detroit, MI 48201

SI1: Confocal microscopy image of bottom coverslip showing rings after crossing the phase-boundary. The scale bar is 20 μm .



Supporting Movie 1: This movie has been referred as ESI Movie 1 in the main text and has the file name Movie1. It showed the destruction of the domes by a quench from two-phase to one-phase region.

Supporting Movie 2: This movie has been referred as ESI Movie 2 in the main text and has the file name Movie2. It showed the confocal z-scan of one dome.

Supporting Movie 3: This movie has been referred as ESI Movie 3 in the main text and has the file name Movie3. It showed the panoramic view of one dome.