

Supplementary Information

Conductive Biocomposite Hydrogels with Multiple Biophysical Cues Regulate Schwann

Cell Behaviors

Yahong Zhao ^{a,1,*}, Jina Liu ^{a,1}, Yisheng Gao ^a, Zhixin Xu ^a, Chaolun Dai ^b, Guicai Li ^a, Cheng Sun ^a, Yumin Yang ^{a,*}, Kunyu Zhang ^{c,d,e,f,*}

Table S1. Primer sequences used for RT-qPCR analysis.

Gene	Forward Primer	Reverse Primer
18S	TCTATTTTGTGGTTTTTCGG	ATGCTTTCGCTCTGGTTC
NGF	GTTTAGCACCCAGCCTCC	GGTCTTATCTCCAACCCACA
BDNF	TGACAGTATTAGCGAGTGGG	ATTGGGTAGTTCGGCATT
CNTF	CTGTAGCCGTTCTATCTGG	GGTAAGCCTGGAGGTTCT

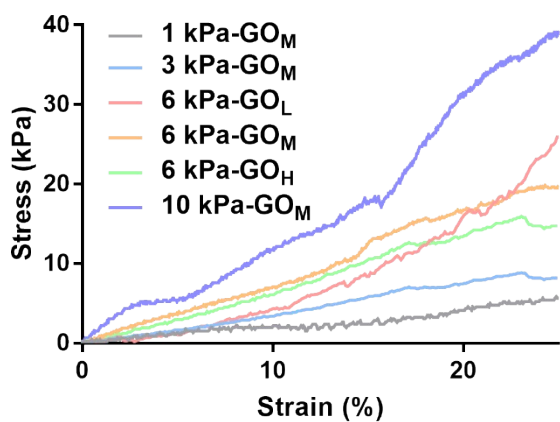


Fig. S1. Representative stress-strain curves of the SF/GO biocomposite hydrogels.

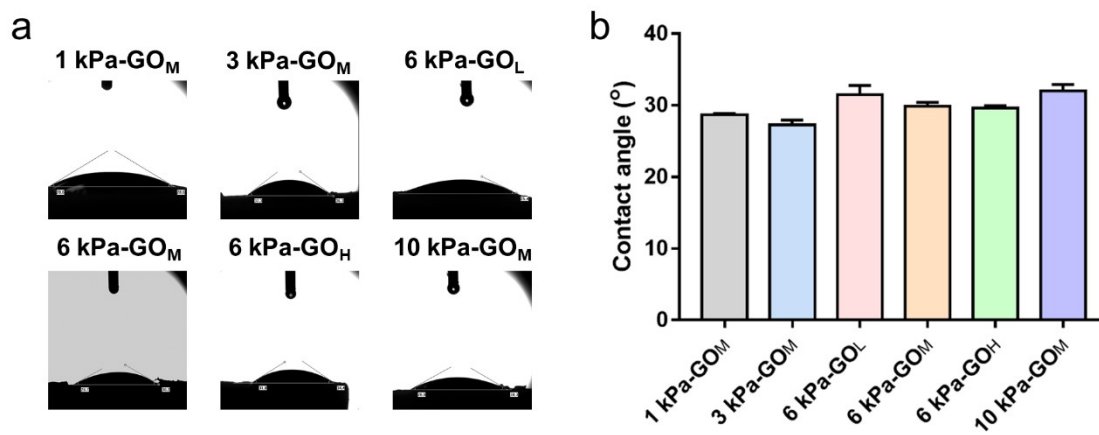


Fig. S2. a) Photographs of water contact angles of the SF/GO biocomposite hydrogels. b)

Water contact angles of the SF/GO biocomposite hydrogels.