

# **A photoelectric effect integrated scaffold for wireless regulation of nerve cellular behaviors**

Jiajia Tang<sup>‡a</sup>, Chengheng Wu<sup>‡a</sup>, Zi Qiao<sup>a</sup>, Jinkui Pi<sup>b</sup>, Yusheng Zhang<sup>a</sup>, Fang Luo<sup>c</sup>, Jing Sun<sup>a</sup>,

Dan Wei<sup>\*a</sup>, Hongsong Fan<sup>\*a</sup>

<sup>a</sup>National Engineering Research Center for Biomaterials, College of Biomedical Engineering,

Sichuan University, Chengdu 610064, Sichuan, China

<sup>b</sup>Core Facilities of West China Hospital, Sichuan University, Chengdu 610041, Sichuan,

China

<sup>c</sup>The Center of Gerontology and Geriatrics, West China Hospital, Sichuan University,

Chengdu 610041, Sichuan, China

<sup>‡</sup> These authors contributed equally to this work.

Supplementary Figure S1:

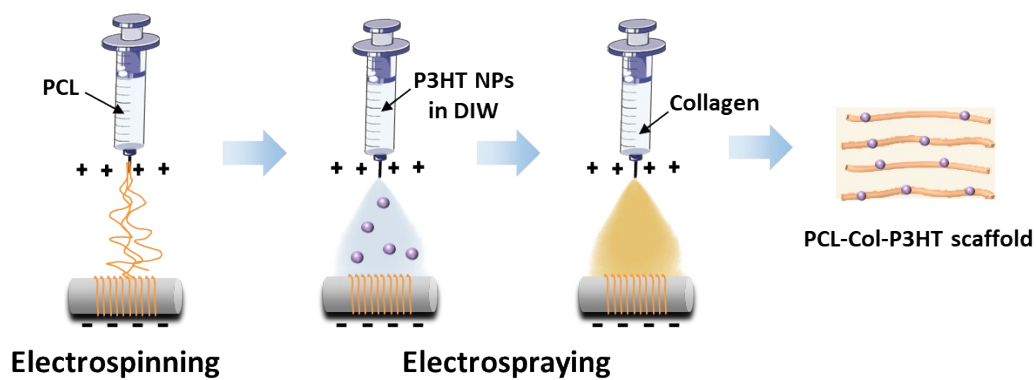


Figure S1. The schematic diagram of preparation of PCL-Col-P3HT scaffold

Supplementary Figure S2 :

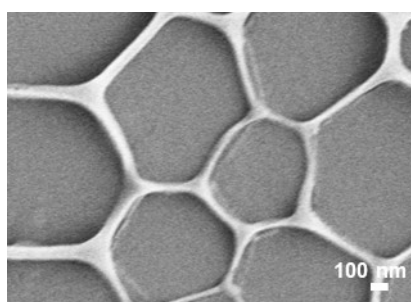


Figure S2. SEM image of amorphous P3HT film product prepared by not adding SDS.

Supplementary Figure S3:



Figure S3. The electrospinning equipment

Supplementary Figure S4:

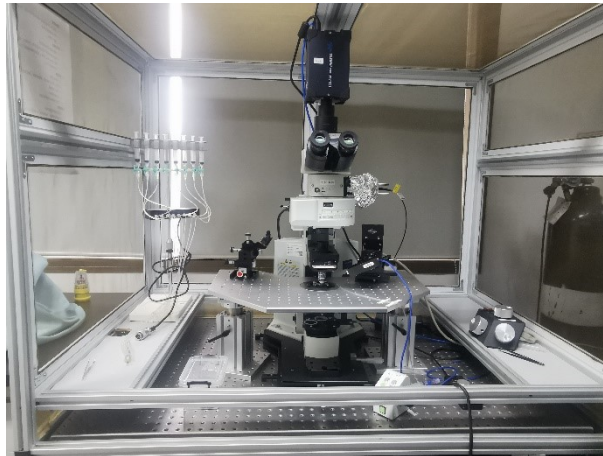


Figure S4. The cell patch clamp equipment

Supplementary Figure S5:

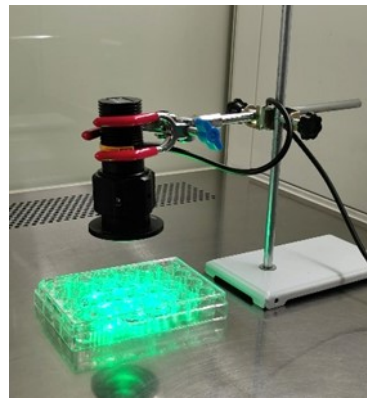


Figure S5 Image of the 530 nm LED light stimulation of cells

Supplementary Table 1:

Primer Sequences for Target Genes		
Gene	Forward primer	Reverse primer
TuJ1	ACAATGAGGCCTCCTCTCAC	TATAGTGCCCTTTGGCCCAG
SYP1	AAACCACAGCTGGCTCAGAAA	AGAGACTGGGATTTGTTGAGCT
		G
Ina	AGGCTGGAAGGTAAACTCAGAC	CAATTCCAGGAGTGAAGCAGGA
Cacnb3	ACTGAGCTGGGATGCTGCT	ACAGGTTTGTGCTTGGCTCT
GAPDH	AACCTGCCAAGTATGATGAC	GGAGTTGCTGTTGAAGTCA