

Electronic Supplementary Information

Dynamic and reversible tuning of pixelated plasmonic cluster arrays

Fangfang Deng,^{†a} Junxiang Xiang,^{†b} Ze Liu^{*b,c} and Tao Ding^{*a}

- a. Key Laboratory of Artificial Micro- and Nano-structures of Ministry of Education of China, School of Physics and Technology, Wuhan University, Wuhan 430072 China.
- b. Department of Engineering Mechanics, School of Civil Engineering, Wuhan University, Wuhan, Hubei 430072, China.
- c. State Key Laboratory of Water Resources & Hydropower Engineering Science, Wuhan University, Wuhan 430072, China.

† These authors contributed equally.

* Corresponding author E-mail: ze.liu@whu.edu.cn (Z. Liu); t.ding@whu.edu.cn (T. Ding).

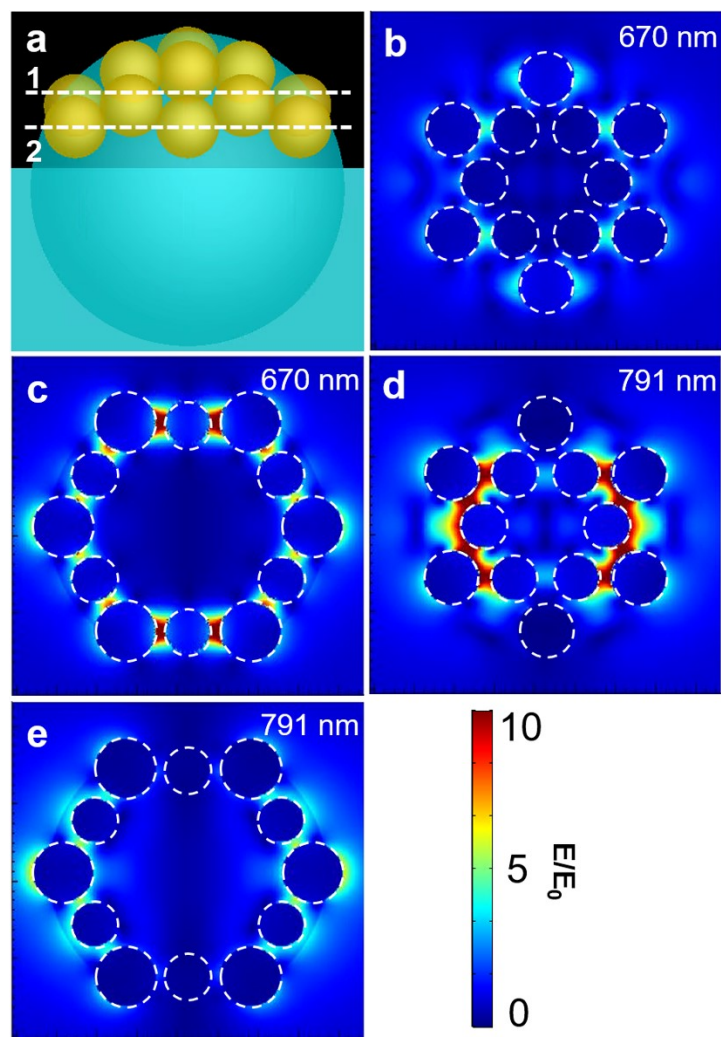


Figure S1. FDTD simulation of the electric near field profile of Au nanocluster embedded in PDMS dome. (a) Scheme of the simplified model. Near field of cross-section (1) (b, d) and (2) (c, e) marked in (a). The wavelength for (b, c) is 670 nm and for (d, e) is 791 nm.

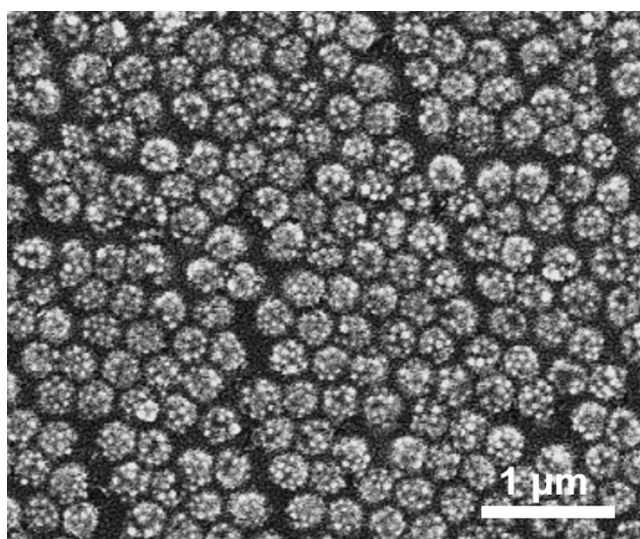


Figure S2. SEM image of Au clusters embedded in PDMS substrate after cycles of solvent-tuning and mechanical stretching.