

Electrogenerated Chemiluminescence of Luminol at Boron-Doped Diamond

Electrode for the Detection of Hypochlorite

Isnaini Rahmawati,^a Endang Saepudin,^a Andrea Fiorani,^b Yasuaki Einaga,^b Tribidasari A. Ivandini^a

a. Department of Chemistry, Faculty of Mathematics and Sciences, Universitas Indonesia, Kampus UI Depok, Jakarta 16424, Indonesia

b. Department of Chemistry, Keio University, 3-14-1 Hiyoshi, 223-8522, Yokohama, Japan.

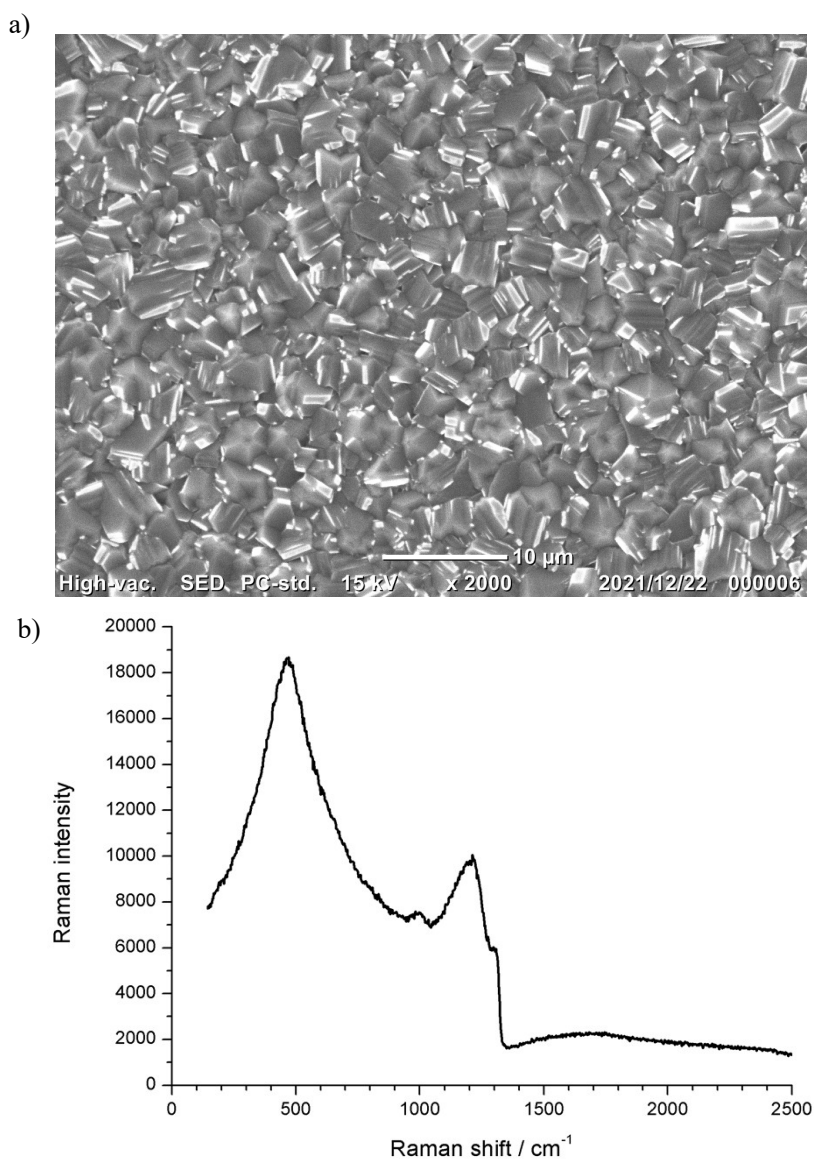


Figure S1. (a) SEM image, (b) Raman of BDD

a)



b)



Figure S2. The surface of mini BDD a) before b) after the addition of NaClO 0,1 M in 10 mM luminol-H₂O₂

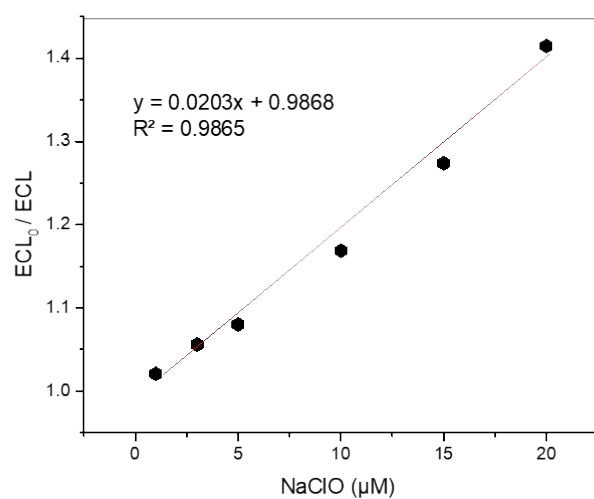


Figure S3. Stern Volmer Plot for ECL luminol-H₂O₂ at BDD electrode with increasing concentrations of NaClO from 0 to 20 μM

Table S1. Measured pH for both pre and post spiked solutions.

<i>Spiked NaClO /μM</i>	<i>pH pre</i>	<i>pH post</i>
5	6.1	10
10	6.1	10.1
20	6.1	10.1